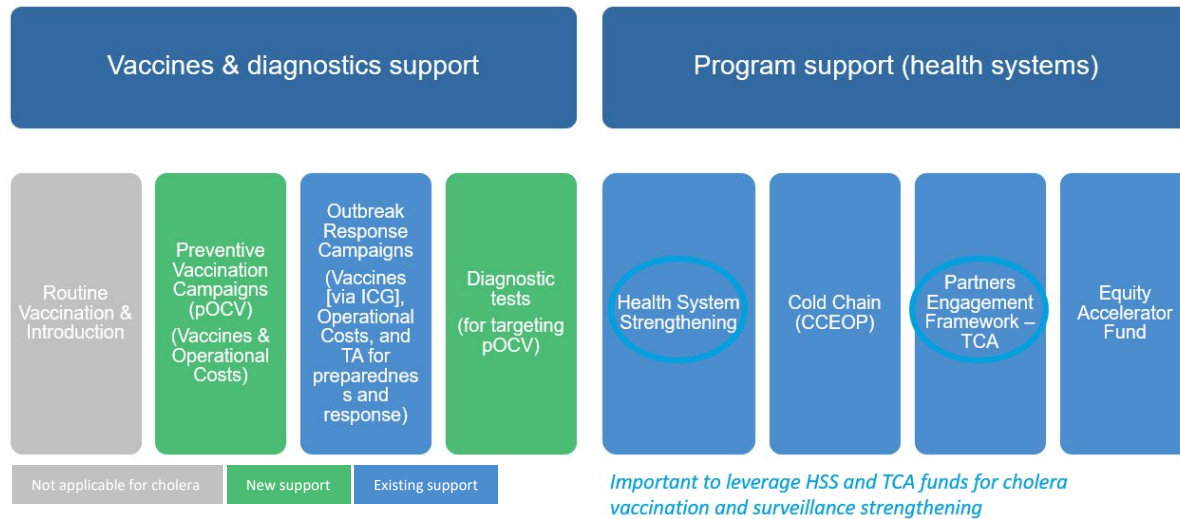
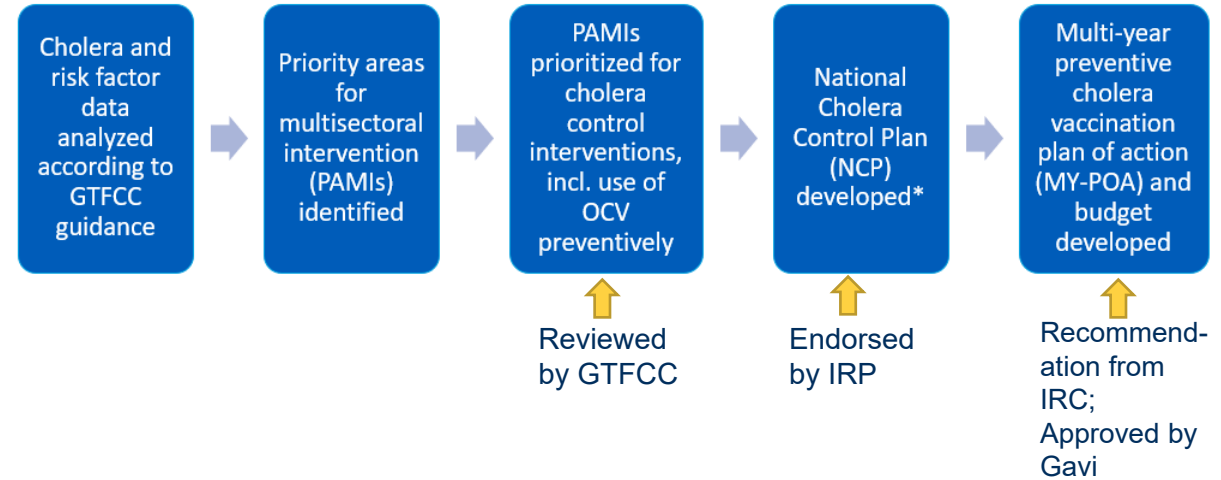


Applying for preventive oral cholera vaccination campaign support (pOCV) & cholera RDTs

Gavi funding available to countries for cholera surveillance and control



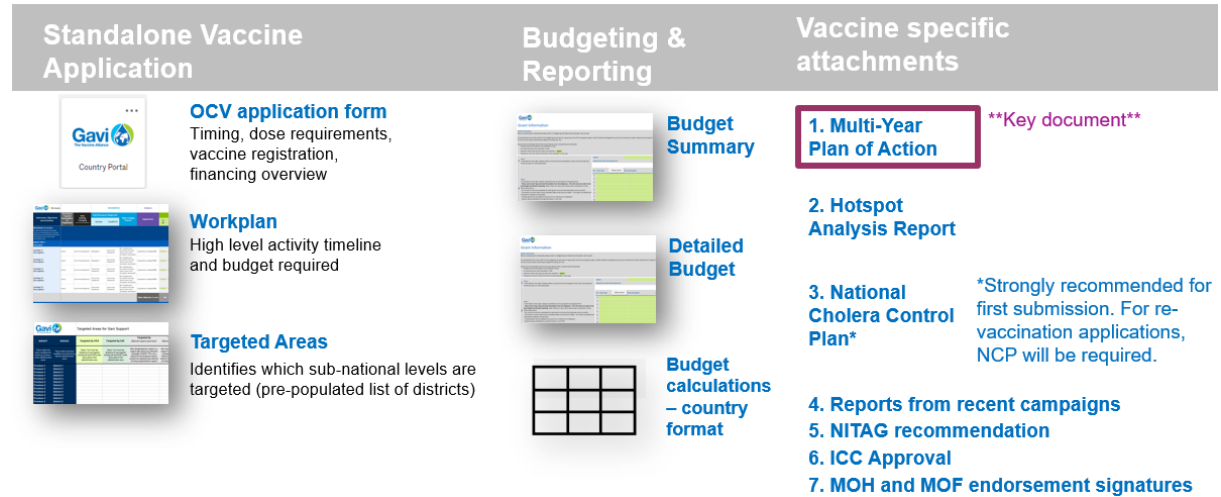
Steps for developing pOCV plan



Vaccine Funding Guidelines^[1] contain guidance on vaccine and diagnostic applications



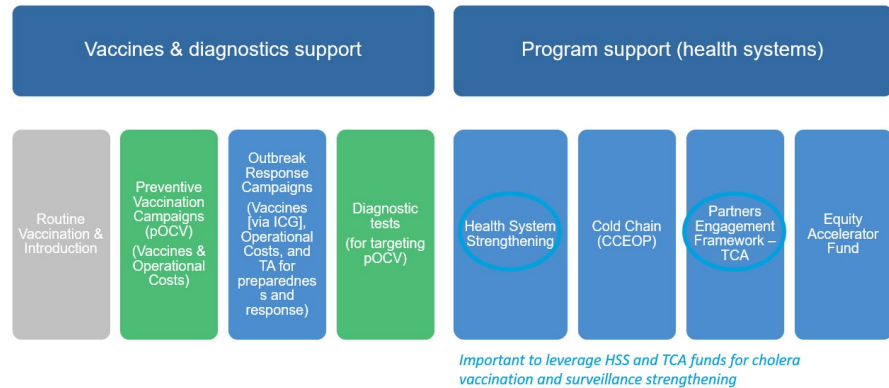
Documents needed for the pOCV application



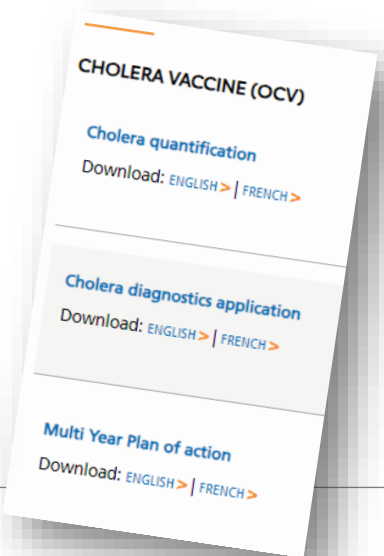
^[1] Accessible at: <https://www.gavi.org/news/document-library/gavi-vaccine-funding-guidelines>
<https://www.gavi.org/fr/actualites/librarie-de-documents/directives-de-gavi-pour-le-financement-du-soutien-aux-vaccins>

Applying for preventive oral cholera vaccination campaign support (pOCV) & cholera RDTs

Gavi funding available to countries for cholera surveillance and control

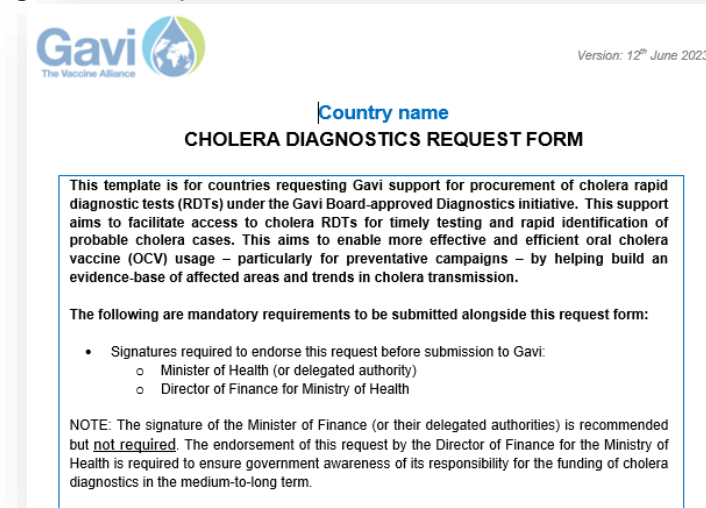


All guidelines and templates are found on the Gavi Support website^[2].
 Navigate to the sections on:
 “Standalone Vaccine Application Materials and Guidelines” &
 “Vaccine Information, Switches, and Diagnostics” > “Cholera Vaccine (OCV)”



Two documents needed for cholera RDTs:

(1) Cholera diagnostics request form



(2) Tool for quantifying cholera RDT requirements

Gavi The Vaccine Alliance
Tool for quantifying cholera rapid diagnostic test (RDT) requirements

WELCOME
This Excel calculates Rapid Diagnostic Test (RDT) quantities needed for annual testing based on a standard formula - logic shown below. Using this methodology is optional - countries are welcome to use country-developed alternatives and describe their logic in [application form](#). Please navigate to the 'CALCULATOR' tab to start. If any questions, please reach out to diagnostics@gavi.org.

Regular testing areas

For storing in health facilities to test three suspected cases per day to monitor cholera incidence in areas of regular cholera transmission

Surveillance units known to have regular cholera transmission in recent years

Number of designated health facilities that identify and/or treat suspected cholera cases

3-tests per day

(Average) Number of weeks per year with at least 1 suspected cholera case reported

Test requirement for monitoring incidence

As-needed testing areas

For ad-hoc testing of suspected cholera cases, e.g., deployed from sub-national level stockpiles as needed.

Number of surveillance units not known to have regular cholera transmission in recent years

120-tests per year

Additional tests for identifying imported cases or outbreaks

Supply buffer

A 20% buffer on top of total 'regular testing' and 'as-needed' requirements will be provided for use by the country, e.g., during outbreaks, and to facilitate adequate flow of supplies. No additional inputs or calculations are required for this buffer.

District	e.g., 2022	Manual entry	Operating days	Testing requirement (annual)
District 1	Manual entry	Manual entry	Drop-down selection	Calculation
District 1	341	2	Every day (365)	2,130
District 2	202	1	Every day (365)	1,035
District 3	707	3	Every day (365)	3,285
District 4	324	2	Every day (365)	2,130
District 5	1764	4	Every day (365)	4,380

(2) Test requirements for case-investigation testing in other districts

Number of districts (not including those in part 1)	Test provision per district	Testing requirement (annual)
Manual entry	Automated	Calculation
100	120	12,000

^[2] Accessible at: <https://www.gavi.org/our-support/guidelines>
<https://www.gavi.org/fr/notre-soutien/directives>