



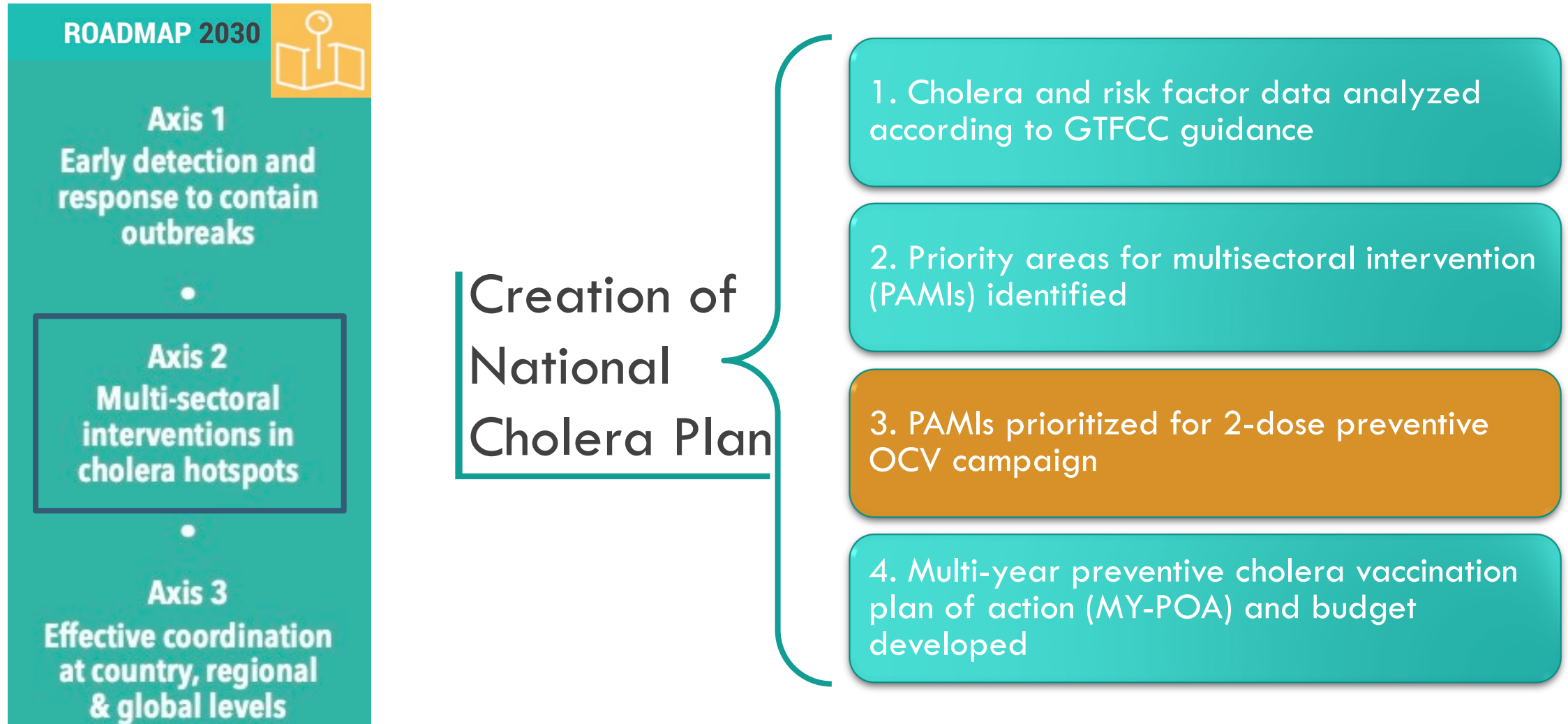
GLOBAL TASK FORCE ON
CHOLERA CONTROL

PRIORITIZATION OF PAMIS FOR OCV USE

13 Oct 2023

10th Annual GTFCC Working
Group on Oral Cholera Vaccine

NEED FOR PRIORITIZATION OF PAMIS FOR OCV CAMPAIGN PLANNING WITHIN NCPS

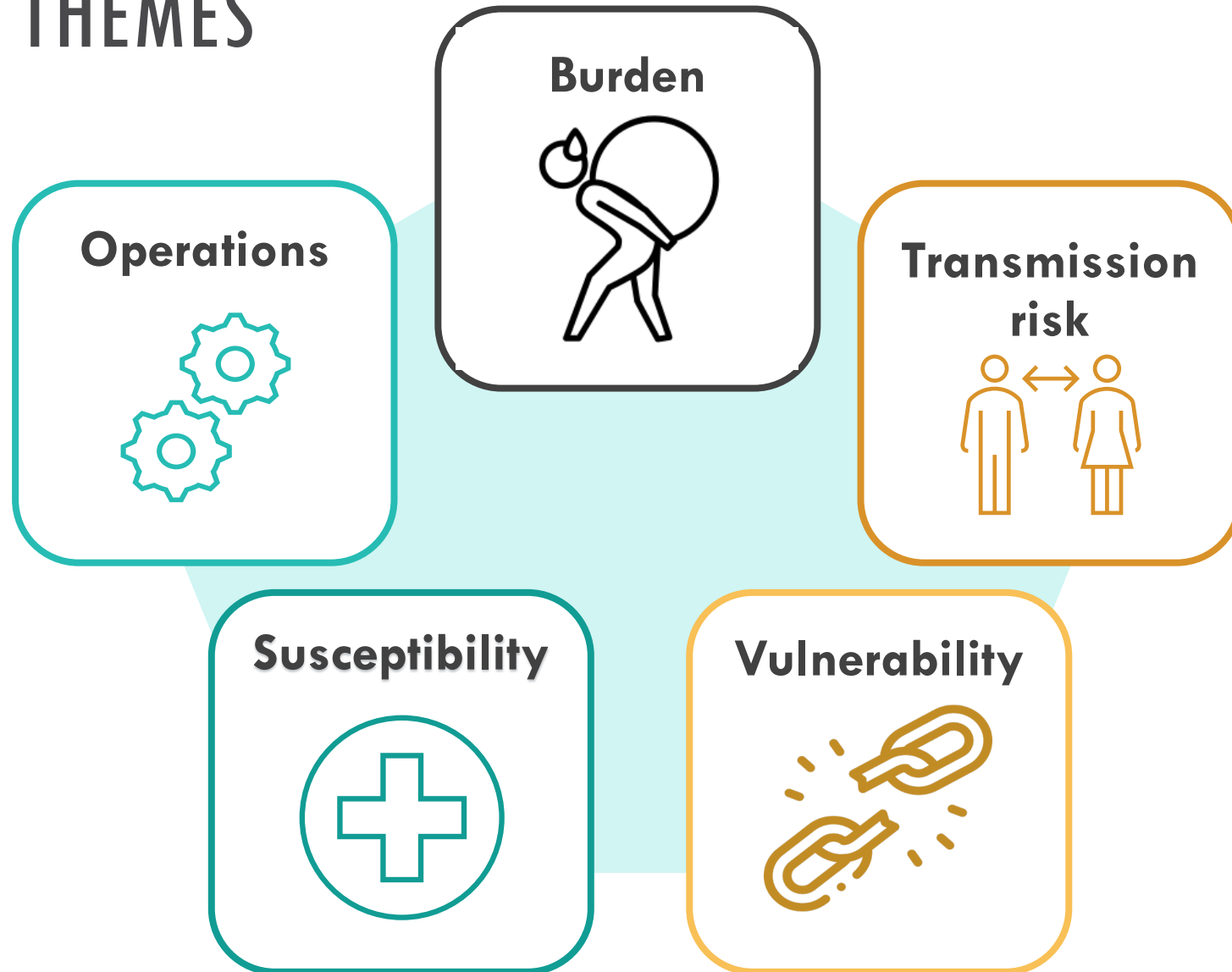


2-YEAR PROCESS TO DEVELOP AND TEST TOOL

**Spring
2022**

The OCV TWG identified criteria and developed a tool to help countries prioritize their PAMIs for OCV use.

BURDEN AND INCORPORATED OVERARCHING VULNERABILITY CRITERIA THEMES



2-YEAR PROCESS TO DEVELOP AND TEST TOOL

**Spring
2022**

The OCV TWG identified criteria and developed a tool to help countries prioritize their PAMIs for OCV use.

**2022-
2023**

Tool tested by DRC and Bangladesh.

Populated tool with dummy data to identify areas needing improvement.

IDENTIFIED TOOL COMPONENTS NEEDING IMPROVEMENT

Bugs in tool coding

Population growth
and vaccine eligibility
not accounted for in
predicting vaccination
needs

Criteria wording and
scoring didn't align
with PAMI
Identification Tool

Weighted components
of the total score
needed adjustments
to accurately
categorize each PAMI

Higher admin levels
not included for PAMIs

Lack of automation

2-YEAR PROCESS TO DEVELOP AND TEST TOOL

**Spring
2022**

The OCV TWG identified criteria and developed a tool to help countries prioritize their PAMIs for OCV use.

**2022-
2023**

Tool tested by DRC and Bangladesh.

Populated tool with dummy data to identify areas needing improvement.

**Summer
2023**

Based on feedback, we improved user-friendliness and functionality.

CURRENT VERSION OF TOOL



STEPS TO PRIORITIZE PAMIS FOR OCV CAMPAIGN PLANNING

Data collection

- Epidemiological data
- Vulnerability factors
- OCV campaign history

Scoring

- PAMI Score
- Risk Score
- Susceptibility Score

Operations

- Planned year of campaign rounds
- Required doses
- Consideration for
 - Accessibility
 - Security
 - Regional approach

STEPS TO PRIORITIZE PAMIS FOR OCV CAMPAIGN PLANNING

Data collection

- Epidemiological data
- Vulnerability factors
- OCV campaign history

Scoring

- PAMI Score
- Risk Score
- Susceptibility Score

Operations

- Planned year of campaign rounds
- Required doses
- Consideration for
 - Accessibility
 - Security
 - Regional approach

INCLUDED DATA ON VULNERABILITY AND TRANSMISSION RISK FACTORS

PAMI information			Step 1: Gather data on mandatory/optional criteria															
			Vulnerability								Risk of transmission and spread							
			Areas with high risk populations (e.g., IDP, refugees, fishermen, urban slums, etc)	Acces to water, sanitation and hygiene (OPTIONAL)						Areas at high-risk for extreme climate and weather (OPTIONAL)		Areas with high population density or overcrowded settings		Area adjacent to cholera-affected areas or identified PAMIs		Areas with recent transmission of cholera in the last 12 months or last cholera season		
UNIQUE ID	Admin Level 1	Admin Level 2	Areas with high risk populations ?	High risk populations score (Yes=4; No=2)	Areas with more than 30% of the population with access to unimproved water facility type	Acces to water score (Yes=4; No=2)	Areas with more than 50% of the population with access to unimproved sanitation facility type	Access to sanitation score (Yes=4; No=2)	Areas with more than 50% of the population with no handwashing facility on premises	Acces to handwashin g score (Yes=4; No=2)	Areas at high-risk for extreme climate and weather conditions (e.g., heavy rains, floods, droughts)	High-risk weather score (Yes=4; No=2)	High population density or overcorwd ed settings	Populatio n density score (Yes=4; No=2)	Area adjacent to cholera-affected areas or identified PAMIs	Adjacent to cholera-affected areas or identified PAMI Score (Yes=4; No=2)	Recent cholera transmission during the last 12 months/last cholera season?	Recent cholea transmission in last 12 months score (Yes=4; No=2)
UniqueID	Admin_1	Admin_2	VF_05_spec_risk_pop	VF5score	VF_10_WASH_ind_water	VF10score	VF_11_WASH_ind_sanitation	VF11score	VF_12_WASH_ind_hygiene	VF12score	VF_08_acute_emerg	VF8score	VF_04_overcrowd_s	VF4score	VF_01_prox_chol	VF1score	transmission	transmissionscore
id_005	admin_1_01	admin_2_00	No	2	No	2	Yes	4	Yes	4	Yes	4	No	2	No	2		
id_013	admin_1_02	admin_2_01	Yes	4	No	2	Yes	4	Yes	4	No	2	Yes	4	No	2		
id_014	admin_1_02	admin_2_01	No	2	Yes	4	No	2	Yes	4	No	2	No	2	No	2		
id_015	admin_1_02	admin_2_01	No	2	Yes	4	Yes	4	Yes	4	No	2	No	2	Yes	4		
id_022	admin_1_02	admin_2_02	No	2	No	2	No	2	No	2	No	2	Yes	4	No	2		
id_025	admin_1_02	admin_2_02	No	2	No	2	No	2	No	2	Yes	4	No	2	No	2		
id_028	admin_1_02	admin_2_02	No	2	No	2	No	2	No	2	No	2	No	2	No	2		
id_030	admin_1_02	admin_2_03	No	2	Yes	4	No	2	Yes	4	No	2	No	2	No	2		
id_033	admin_1_02	admin_2_03	No	2	Yes	4	Yes	4	Yes	4	No	2	No	2	No	2		
id_035	admin_1_02	admin_2_03	Yes	4	Yes	4	Yes	4	Yes	4	No	2	No	2	No	2		
id_038	admin_1_02	admin_2_03	No	2	No	2	No	2	No	2	No	2	No	2	No	2		
id_039	admin_1_02	admin_2_03	No	2	No	2	No	2	No	2	No	2	Yes	4	No	2		
id_048	admin_1_03	admin_2_04	Yes	4	No	2	Yes	4	Yes	4	Yes	4	Yes	4	Yes	4		
id_051	admin_1_03	admin_2_05	Yes	4	Yes	4	Yes	4	Yes	4	Yes	4	Yes	4	Yes	4		
id_053	admin_1_04	admin_2_05	No	2	No	2	No	2	No	2	No	2	No	2	No	2		

HISTORY AND COVERAGE OF PREVIOUS OCV CAMPAIGNS

PAMIs			Step 3: Gather data on OCV Campaign History for each PAMI					
PAMI information			OCV Campaign History					
Selected PAMIs for OCV campaigns from steps 1 to 2			When was the last 2-dose OCV campaign?		Did the campaign occur within the last 3 years?	What was the last 2-dose campaign's vaccine coverage? (%)	Was the vaccine coverage >70%?	Has there been major population movement since the last 2-dose campaign? (Yes/No)
			Month	Year				
Unique_ID	Admin_1	Admin_2	OCVcampaign	OCVcampaign	3years	OCVcoverage	coveragescore	popmovement
id_005	admin_1_01	admin_2_005			No		No	
id_013	admin_1_02	admin_2_013			No		No	
id_014	admin_1_02	admin_2_014			No		No	
id_015	admin_1_02	admin_2_015			No		No	
id_022	admin_1_02	admin_2_022			No		No	
id_025	admin_1_02	admin_2_025			No		No	
id_028	admin_1_02	admin_2_028			No		No	
id_030	admin_1_02	admin_2_030			No		No	
id_032	admin_1_02	admin_2_032			No		No	

STEPS TO PRIORITIZE PAMIS FOR OCV CAMPAIGN PLANNING

Data collection

- Epidemiological data
- Vulnerability factors
- OCV campaign history

Scoring

- PAMI Score
- Risk Score
- Susceptibility Score

Operations

- Planned year of campaign rounds
- Required doses
- Consideration for
 - Accessibility
 - Security
 - Regional approach

RECOMMENDED PRIORITIZATION BASED ON SCORES FROM BURDEN, RISK, AND SUSCEPTIBILITY

Step 4: Review the following information when developing a multi-year plan

Scoring							Prioritization		
PAMI score (max=12)	PAMI ranking	Risk score (max=12)	Risk ranking	Susceptibility score based on OCV history (max = 24)	Susceptibility rank based on OCV history	Total score (max=48)	Recommended prioritization	Final prioritization	Reason for decision
PAMIscore	PAMIranks	Riskscore	Riskrank	OCVhistoryscore	Susceptibilityrank	Totalscore	Prioritization	Decision	Reason
9	High	12	High	24	High	45	Very High		
7	Medium	9	Medium	24	High	40	High		
5	Medium	6	Low	24	High	35	Medium		
9	High	8	Medium	24	High	41	High		
0	Low	7	Low	24	High	31	Low		
6	Medium	6	Low	24	High	36	Medium		
4	Medium	6	Low	24	High	34	Low		
9	High	6	Low	24	High	39	High		
11	High	7	Low	24	High	42	High		
8	Medium	8	Medium	24	High	40	High		
0	Low	6	Low	24	High	30	Low		
4	Medium	7	Low	24	High	35	Medium		
7	Medium	11	High	24	High	42	High		
10	High	11	High	24	High	45	Very High		

STEPS TO PRIORITIZE PAMIS FOR OCV CAMPAIGN PLANNING

Data collection

- Epidemiological data
- Vulnerability factors
- OCV campaign history

Scoring

- PAMI Score
- Risk Score
- Susceptibility Score

Operations

- Planned year of campaign rounds
- Required doses
- Consideration for
 - Accessibility
 - Security
 - Regional approach

DEVELOPMENT OF MULTI-
YEAR OCV CAMPAIGN
SCHEDULE

Step 5: Using all information from Step 4, develop multi-year OCV plan									
OCV Requirements		1st round			2nd round				
Target population (> 1 year old)	Required doses for 2 doses	Required doses for R1	Planned month	Planned year	Required doses for R2	Planned month	Planned year		
Targetpop	ReqDose	R1ReqDose	PlanMonth1	PlanYear1	R2ReqDose	PlanMonth2	PlanYear2		
278243	565092	278244		2024	278243		2024		
590599	1199465	590600		2024	590599		2024		
213089	432769	213090		2024	213089		2024		
785800	1595903	785800		2024	785800		2024		
1501374	3049183	1501375		2026	1501374		2026		
1797592	7675162	1797592		2025	1797592		2025		

ASSESS KEY OPERATIONAL
QUESTIONS

DOCUMENT RATIONALE FOR
PLANNING OF OCV
CAMPAIGNS

Step 6: Assess key operational questions				Step 7: Document rationale for planning of OCV campaigns in PAMIs	
Key operational questions				Rationale	
Has the seasonality of cholera in the PAMI been considered as part of the planned timelines for OCV campaigns?	Have accessibility issues in the PAMI (e.g., security issues, weather patterns or conditions) been considered as part of the planned timelines for OCV campaigns?	Does the country want to consider regional implementation of the campaigns?			
Seasonality	Accessibility	Regionalimp	comments		

RESULTS SUMMARIZE PAMI PRIORITIZATIONS AND REQUIRED DOSES PER YEAR

Prioritization of targeted PAMIs

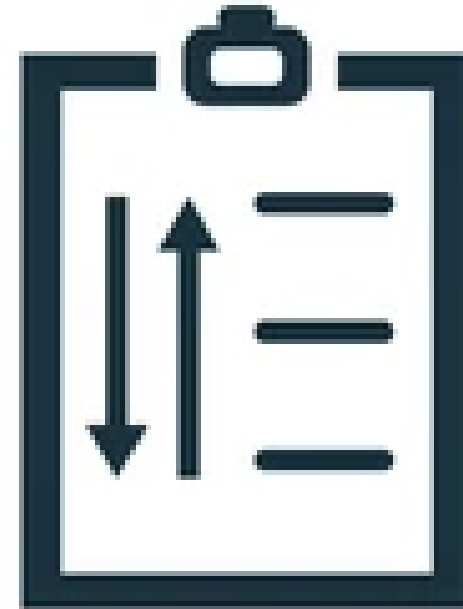
Priority	Total PAMIs	% of PAMIs	Target population in PAMIs	% of total target population in each priority category
Very High	10	10.00%	14,791,266	12.58%
High	31	31.00%	33,767,650	28.72%
Medium	26	26.00%	31,189,365	26.52%
Low	33	33.00%	37,841,799	32.18%
Total	100	100%	117,590,080	100%

Doses requirements and number of targeted PAMIs

	Doses	PAMI		
Year	Total requirement	# of PAMIs for first dose	# of PAMIs for second dose	# of PAMIs to be vaccinated
2023	29,582,537	10	10	10
2024	67,535,319	31	31	31
2025	62,378,743	26	26	26
2026	75,683,613	33	33	33
2027	-	-	-	-
Total	235,180,212	100	100	

ONGOING NEED TO PILOT TOOL IN COUNTRIES DEVELOPING NCPS

- Adjust tool based on feedback
- Refine user guide



Thank you

Together we can
#endcholera



GLOBAL TASK FORCE ON
CHOLERA CONTROL

STEP 0: PAMI DATA IMPORTED FROM:

‘GTFCC PAMI IDENTIFICATION TOOL TAB R.5 TABLE PAMIS EXPORT’

UniqueID																																																																																																																																																																																																																																																																																																																																																																																																																																																																																																																																																																																																										
----------	--	--	--	--	--	--	--	--	--	--	--	--	--	--	--	--	--	--	--	--	--	--	--	--	--	--	--	--	--	--	--	--	--	--	--	--	--	--	--	--	--	--	--	--	--	--	--	--	--	--	--	--	--	--	--	--	--	--	--	--	--	--	--	--	--	--	--	--	--	--	--	--	--	--	--	--	--	--	--	--	--	--	--	--	--	--	--	--	--	--	--	--	--	--	--	--	--	--	--	--	--	--	--	--	--	--	--	--	--	--	--	--	--	--	--	--	--	--	--	--	--	--	--	--	--	--	--	--	--	--	--	--	--	--	--	--	--	--	--	--	--	--	--	--	--	--	--	--	--	--	--	--	--	--	--	--	--	--	--	--	--	--	--	--	--	--	--	--	--	--	--	--	--	--	--	--	--	--	--	--	--	--	--	--	--	--	--	--	--	--	--	--	--	--	--	--	--	--	--	--	--	--	--	--	--	--	--	--	--	--	--	--	--	--	--	--	--	--	--	--	--	--	--	--	--	--	--	--	--	--	--	--	--	--	--	--	--	--	--	--	--	--	--	--	--	--	--	--	--	--	--	--	--	--	--	--	--	--	--	--	--	--	--	--	--	--	--	--	--	--	--	--	--	--	--	--	--	--	--	--	--	--	--	--	--	--	--	--	--	--	--	--	--	--	--	--	--	--	--	--	--	--	--	--	--	--	--	--	--	--	--	--	--	--	--	--	--	--	--	--	--	--	--	--	--	--	--	--	--	--	--	--	--	--	--	--	--	--	--	--	--	--	--	--	--	--	--	--	--	--	--	--	--	--	--	--	--	--	--	--	--	--	--	--	--	--	--	--	--	--	--	--	--	--	--	--	--	--	--	--	--	--	--	--	--	--	--	--	--	--	--	--	--	--	--	--	--	--	--	--	--	--	--	--	--	--	--	--	--	--	--	--	--	--	--	--	--	--	--	--	--	--	--	--	--	--	--	--	--	--	--	--	--	--	--	--	--	--	--	--	--	--	--	--	--	--	--	--	--	--	--	--	--	--	--	--	--	--	--	--	--	--	--	--	--	--	--	--	--	--	--	--	--	--	--	--	--	--	--	--	--	--	--	--	--	--	--	--	--	--	--	--	--	--	--	--	--	--	--	--	--	--	--	--	--	--	--	--	--	--	--	--	--	--	--	--	--	--	--	--	--	--	--	--	--	--	--	--	--	--	--	--	--	--	--	--	--	--	--	--	--	--	--	--	--	--	--	--	--	--	--	--	--	--	--	--	--	--	--	--	--	--	--	--	--	--	--	--	--	--	--	--	--	--	--	--	--	--	--	--	--	--	--	--	--	--

MANDATORY CRITERIA

Category	Prioritization criteria
Vulnerability	Areas with high-risk populations (e.g., refugee camps, IDP camps, fishermen) or affected by complex humanitarian emergencies
Transmission risk	Areas with high population density /overcrowded settings (e.g., urban slums)*
	Area adjacent to cholera-affected areas or identified PAMIs

*Need to justify (e.g., high population density link with poor urbanization services or other risk of transmission amplification)

OPTIONAL CRITERIA

Category	Prioritization criteria
Vulnerability	Area with more than 30% of the population not using safely managed drinking water services
	Areas with more than 50% of the population using safely managed sanitation services
	Areas with more than 50% of the population with handwashing facilities with soap and water at home
	Areas at high-risk for extreme climate and weather conditions (e.g., heavy rains, floods, droughts)
Susceptibility	Areas with recent transmission in the last 12 months/last cholera season

SUSCEPTIBILITY SCORE BASED ON OCV HISTORY

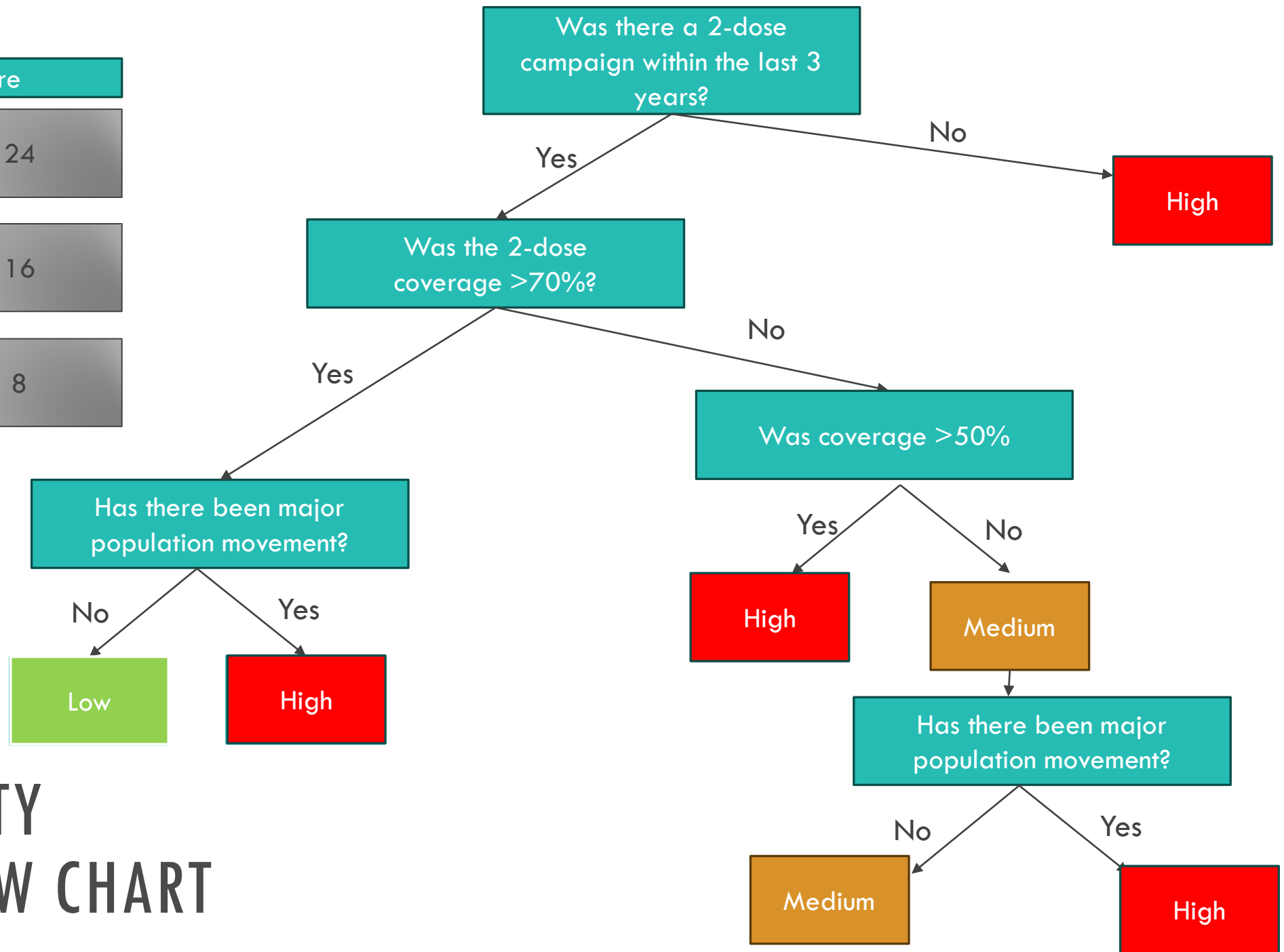
Prioritization criteria

Did the last 2-dose campaign occur within the last 3 years?

Was the vaccine coverage of the last 2-dose campaign greater than 70%?

Has there been major population movement since the last 2-dose campaign?

Rank and Score	
High	24
Medium	16
Low	8



SUSCEPTIBILITY RANKING FLOW CHART

OPERATIONAL QUESTIONS FOR ASSESSMENT

Prioritization criteria

Areas with **accessibility** issues (e.g., security issues, due to weather patterns, or road conditions?)

Has the **seasonality** of cholera in the PAMI been considered?

Does the country want to consider **regional implementation** of the campaigns?