

OCV Dashboard

Update on country profiles

GTFCC – OCV WG

13 October 2023



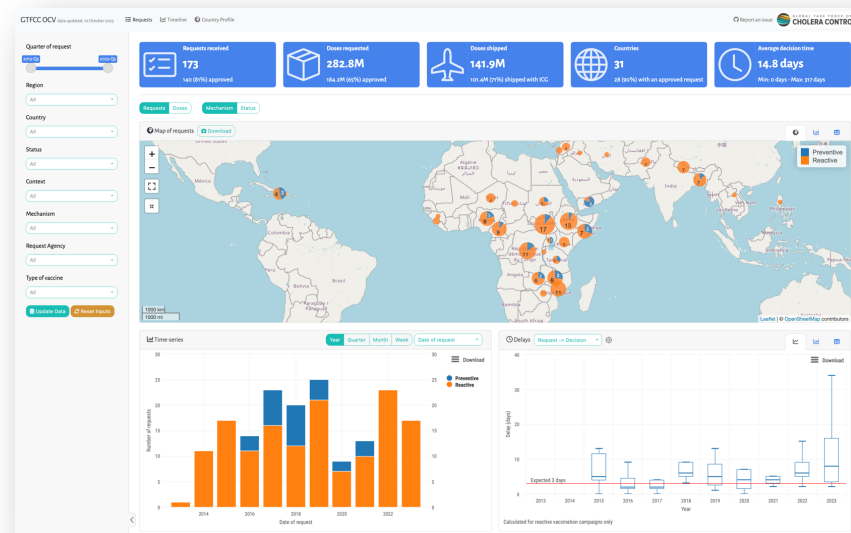
Anton CAMACHO,
Hugo SOUBRIER & Paul CAMPBELL



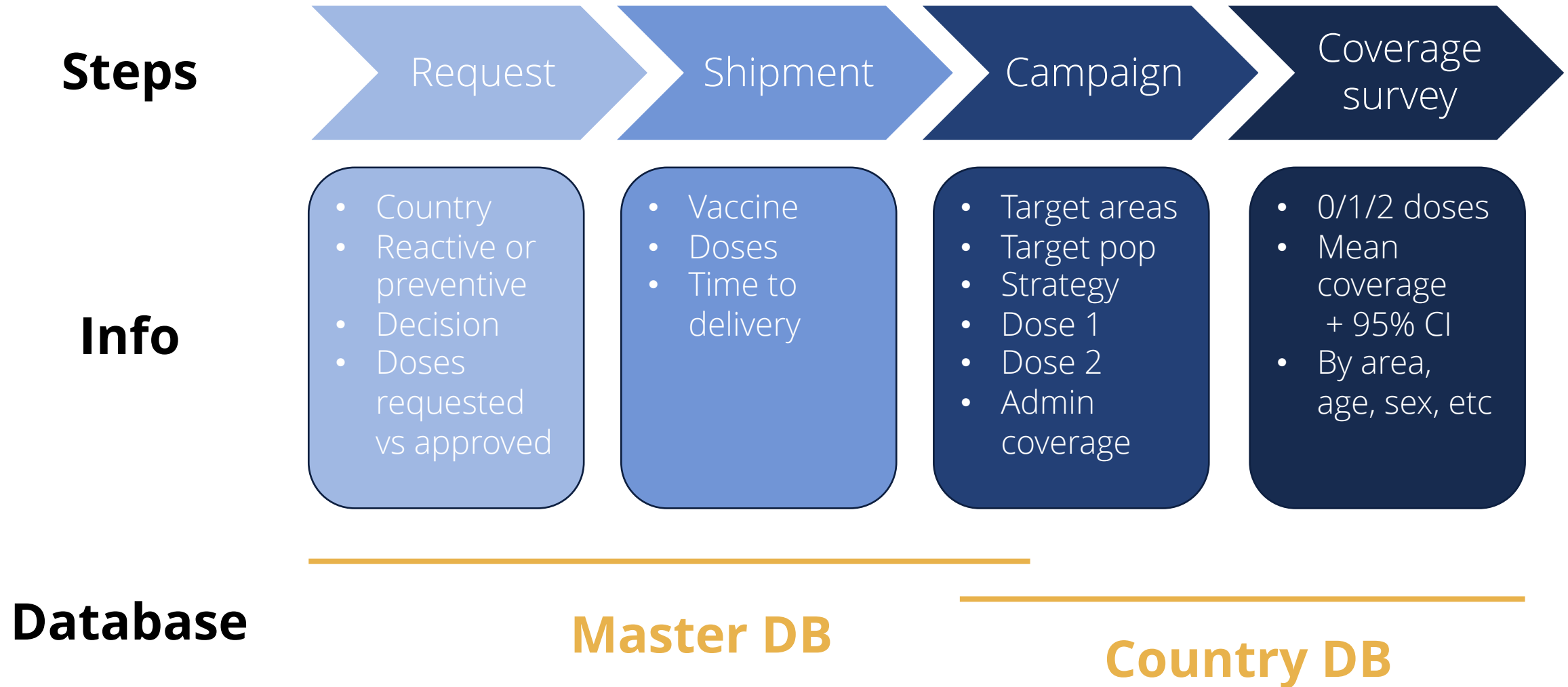
OCV dashboard

- Explore ICG and GTFCC OCV requests
 - Data since 2013
- Available online since March 2022
 - Updated monthly
- Currently at national level
 - How many doses shipped this year?
 - % reactive vs preventive ?
- Soon at sub-national level
 - Country profile: areas already vaccinated ? When? Coverage ?

<https://apps.epicentre-msf.org/public/app/gtfcc>



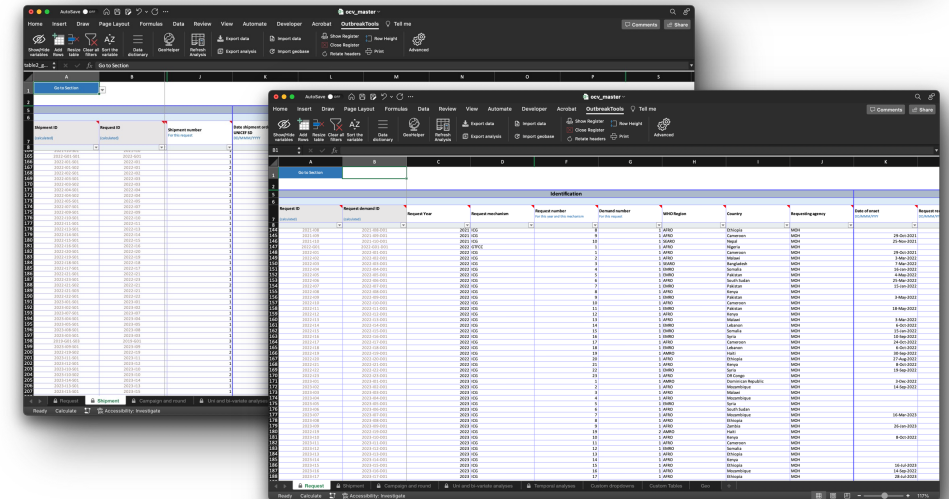
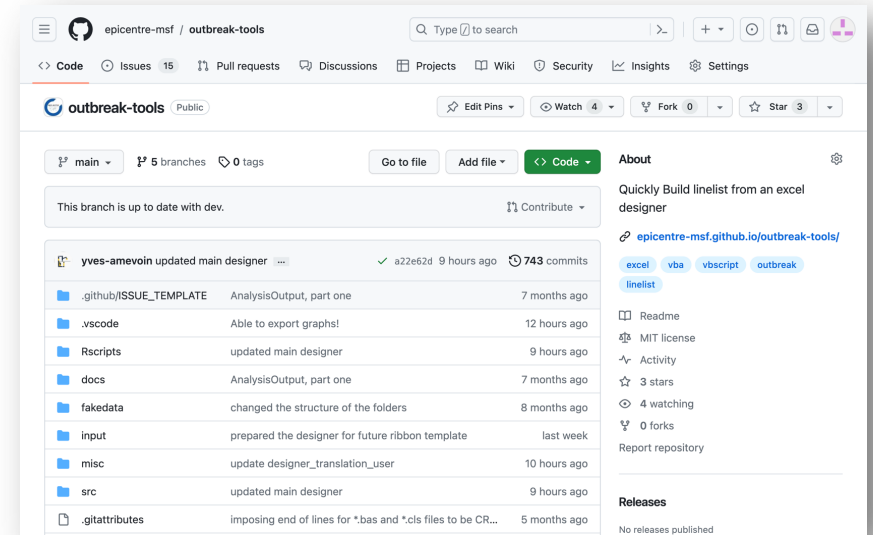
OCV journey



Master DB

- Excel database
 - Designed with Outbreak-Tools (OBT)
- Three linked sheets
 - Request, Shipment, Campaign/Round
- Data entered at WHO HQ level
 - 173 requests
 - 198 shipments
 - 237 campaigns & rounds

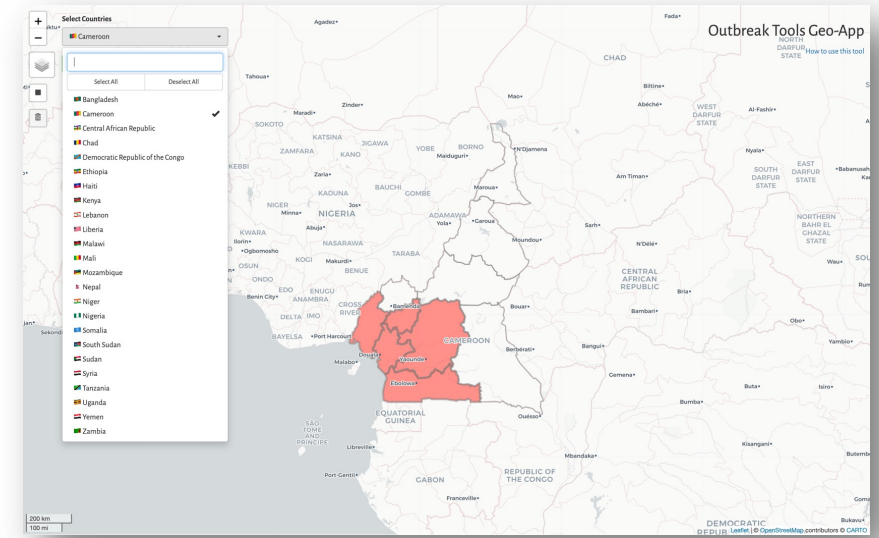
<https://github.com/epicentre-msf/outbreak-tools>



Country DB

- Excel database (OBT)
 - Target areas, Coverage survey
- Standardized geographical data
 - Automate mapping
- Data entered at country level
 - 1 file = 1 campaign
 - Retrospectively: 18 campaigns
 - Prospectively: MoH teams
- Templates, guidelines & trainings
 - English, French

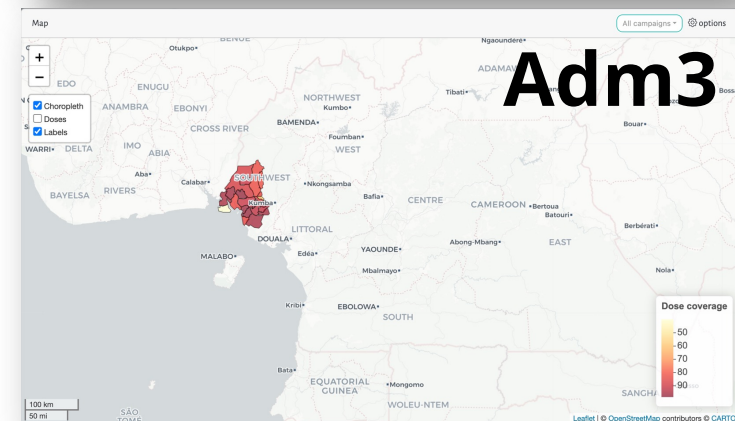
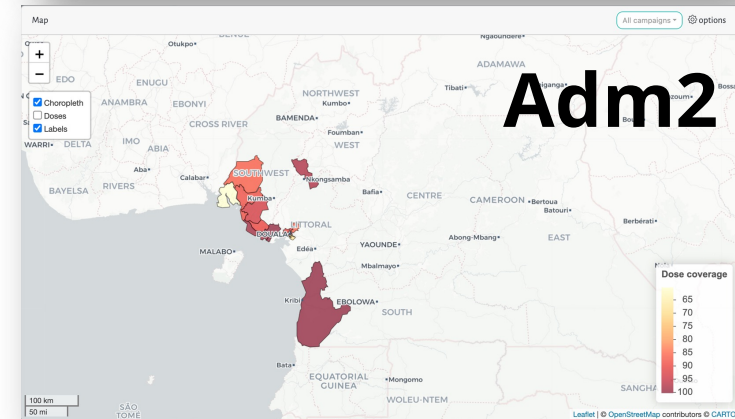
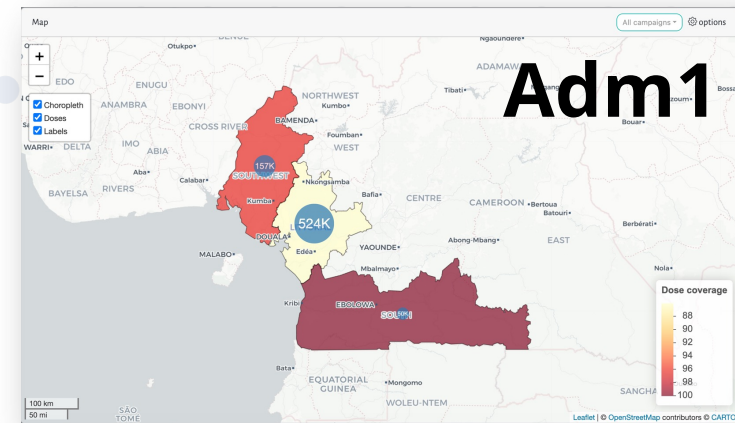
<https://reports.msf.net/secure/app/outbreak-tools-geoapp>

The image shows two overlapping Excel spreadsheets. The top spreadsheet is titled "Request demand identification" and contains a table with columns for "Request demand ID", "Request demand ID and Country variables", and "Request demand ID and Country variables (calculated)". The bottom spreadsheet is titled "1st dose campaign" and contains a table with columns for "Request demand ID", "Start date campaign", "End date campaign", "Number of doses administered", and "Administrative coverage (%)". The table in the bottom spreadsheet contains data for various request demand IDs, with dates ranging from 8-Apr-2022 to 12-Apr-2022, and coverage percentages ranging from 86.1% to 100.0%.

Live demo

Challenges

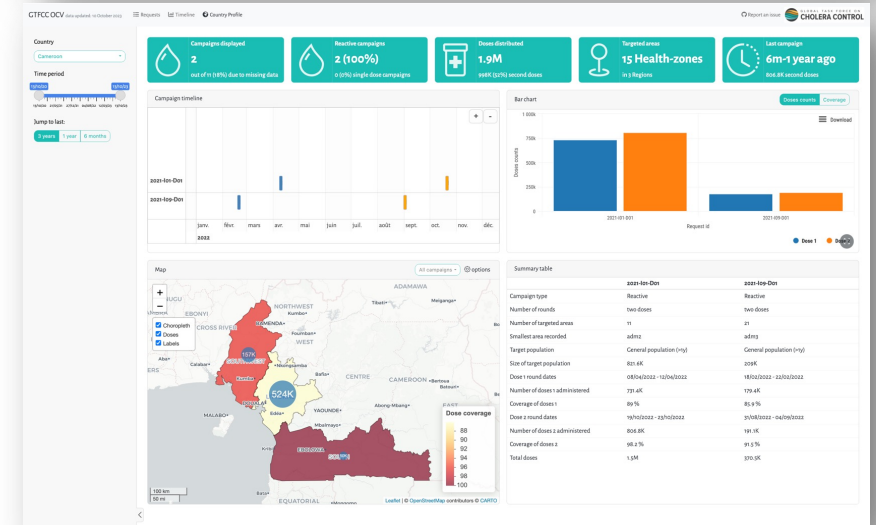
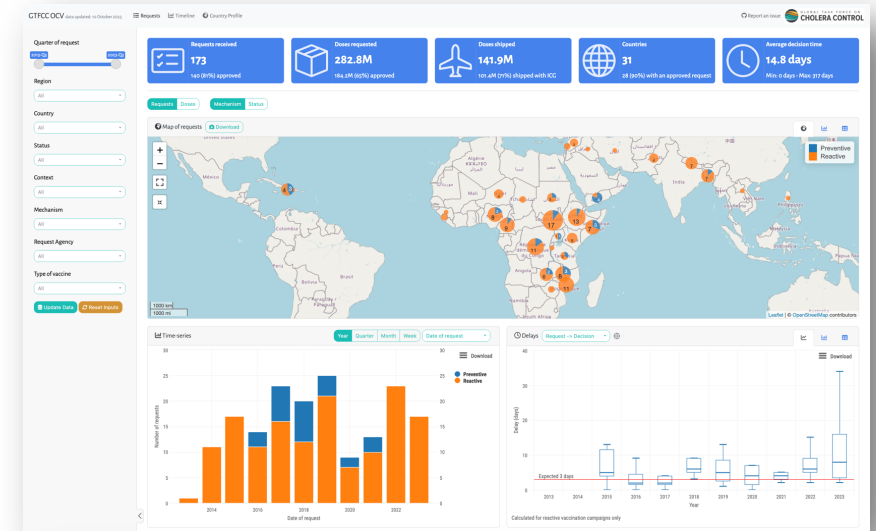
- Heterogeneity of data resolution
 - Admin level 1, 2, 3 & 4
- Multiple campaigns in same area
 - Aggregation rules
- Discrepancies between Master and Country databases
 - Campaign/round
- Completeness of retrospective data
 - OCV reports



Next steps

- Data entry of retrospective & prospective campaigns
 - Work in collaboration with MoHs
- Releasing country profiles
 - Users feedbacks
- Help ICG decision makers
 - Highlight on the map the areas targeted by new requests
- Collect and visualize coverage surveys
 - But reports differ substantially between countries

<https://apps.epicentre-msf.org/public/app/gtfcc>



Acknowledgements



Yves Amevoin
Patrick Barks
Paul Campbell
Marine Durthaler
Mathilde Mousset
Hugo Soubrier



Philippe Barboza
Malika Bouhenia
Vincent Mendiboure
Vendelin Simon



Andrew Azman
Elizabeth Lee

Thank you for your attention !