

# GTFCC COUNTRY SUPPORT PLATFORM (CSP) Research Update

**Tonia Thomas DPhil**, GTFCC Senior Research Officer,  
[toniathomas@redcross.org.uk](mailto:toniathomas@redcross.org.uk)



# AGENDA

- Introduction and overview
- Objectives of GTFCC research focal point
- Current GTFCC research perspective
- Research uptake for Case Management
- Next steps

# ABOUT THE CHOLERA SUPPORT PLATFORM (CSP)

- The CSP was established as an **operational arm of the GTFCC** at the GTFCC annual meeting in 2019.
- The CSP is **hosted at the IFRC Geneva**, under the Health & Care Department.

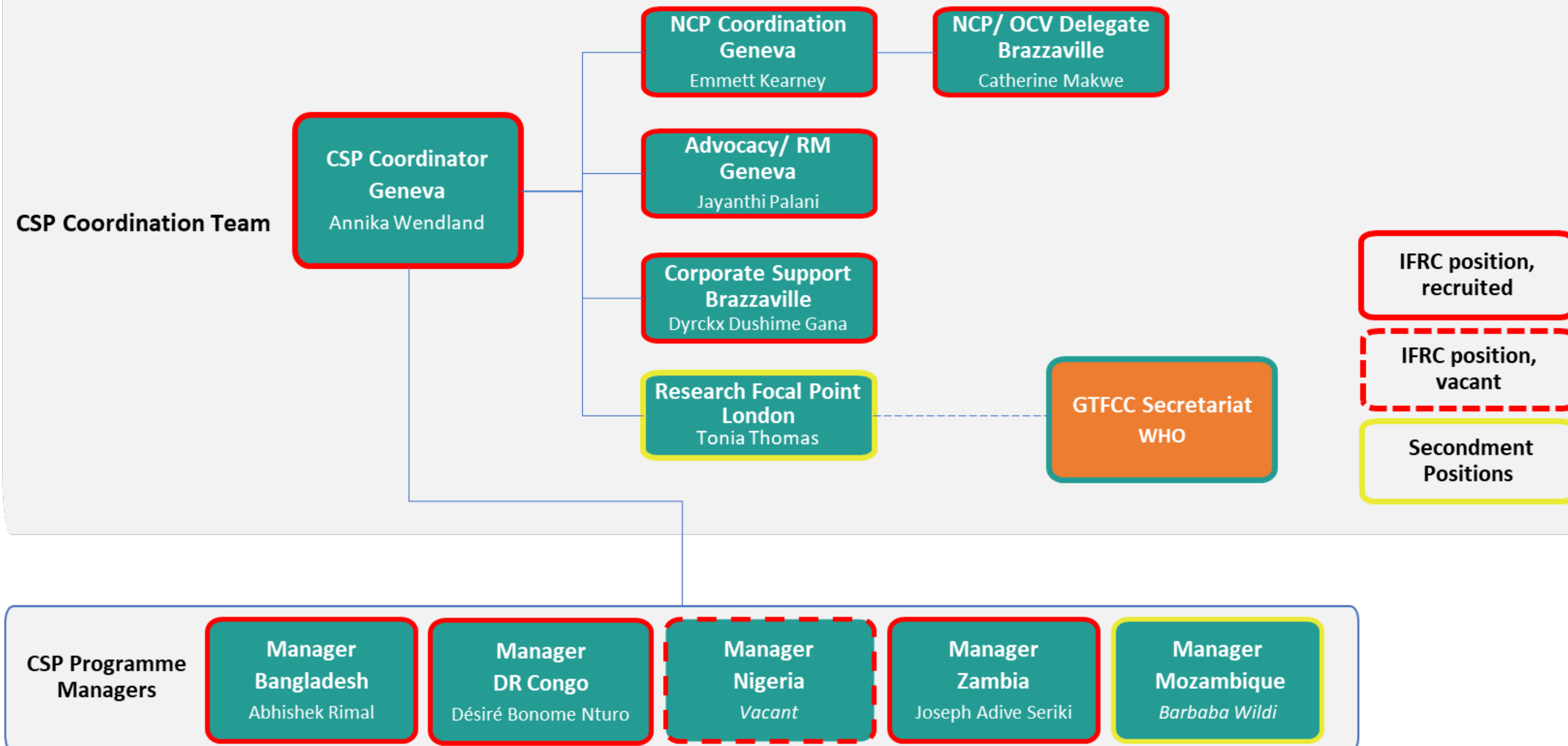
# CSP TEAM



GLOBAL TASK FORCE ON  
**CHOLERA CONTROL**



## CSP organisational structure from June 2023





## CSP COUNTRIES

1

Democratic Republic of the Congo

2

Zambia

3

Bangladesh

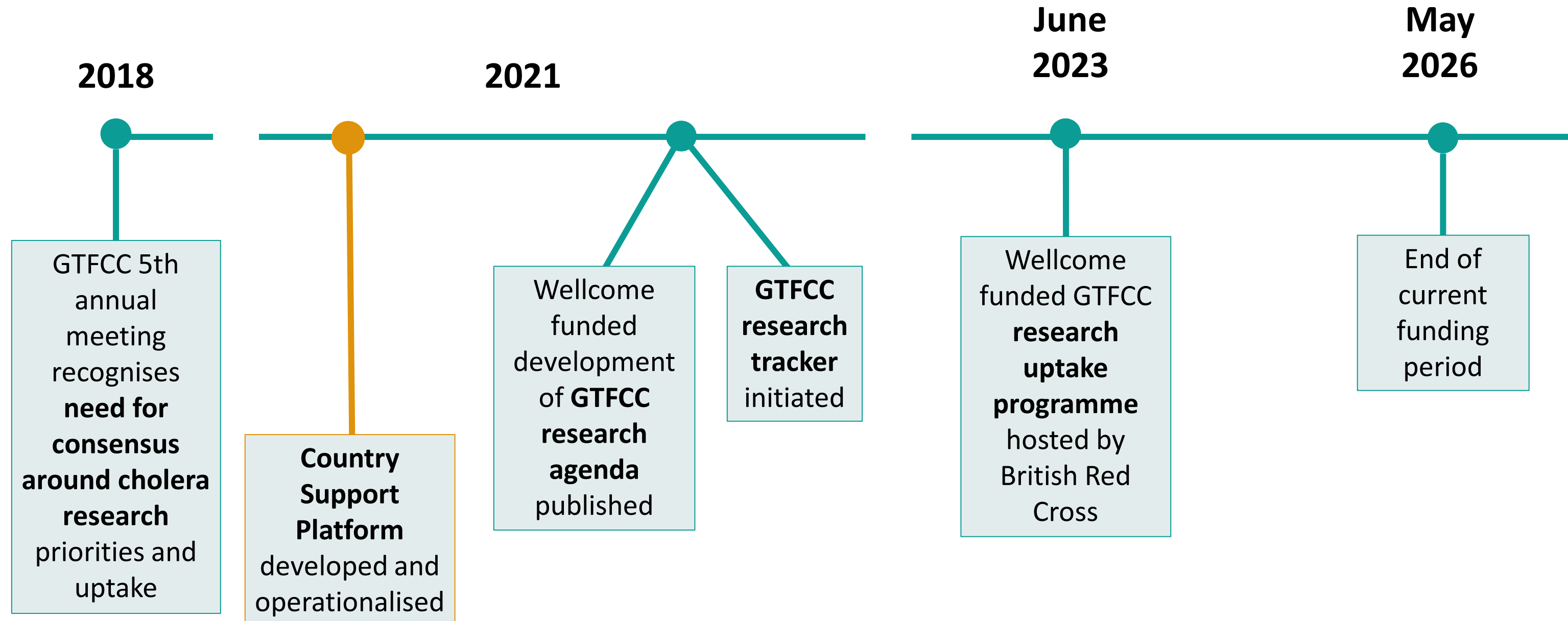
4

Nigeria

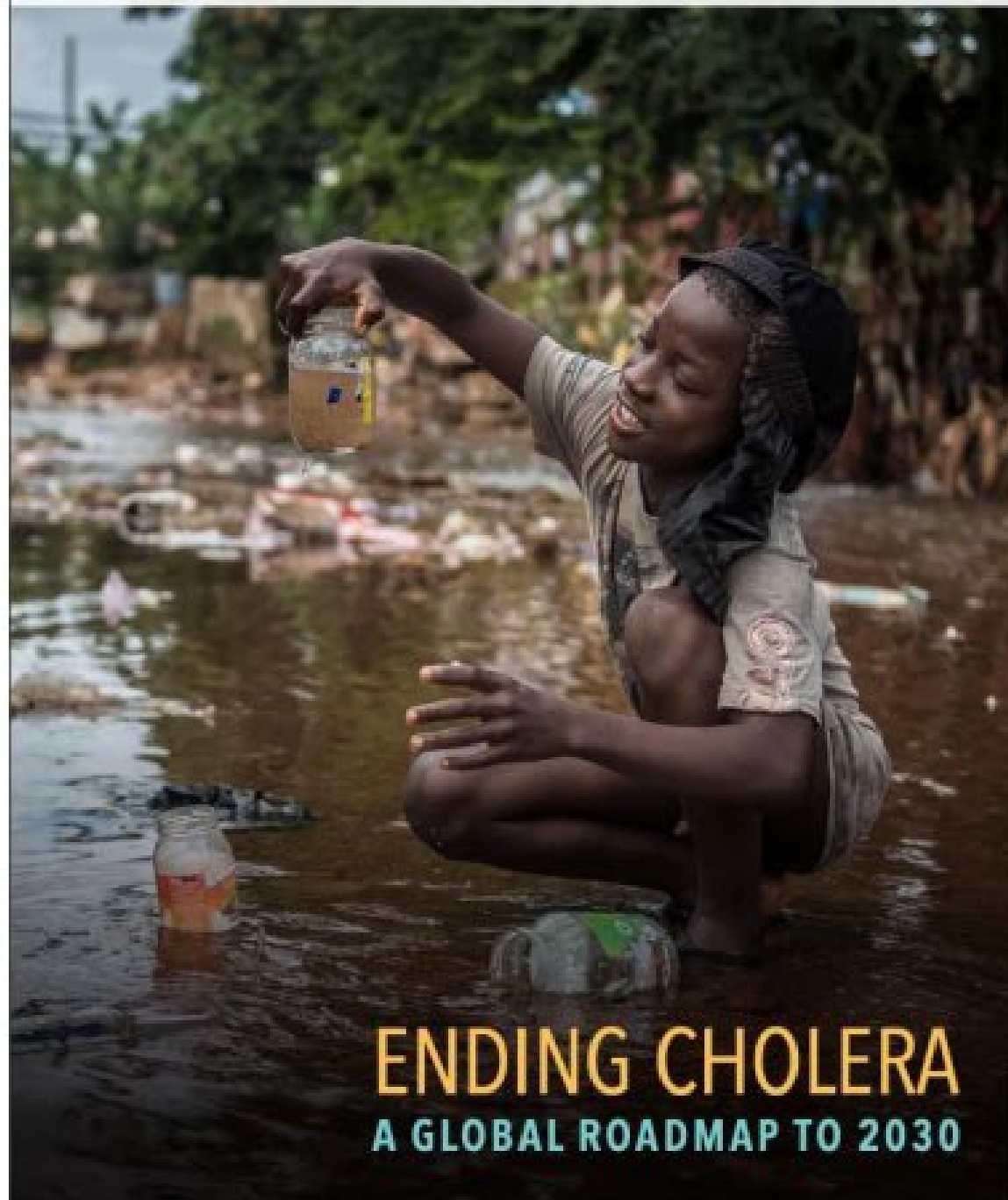
5

Mozambique

# GTFCC RESEARCH TIMELINE

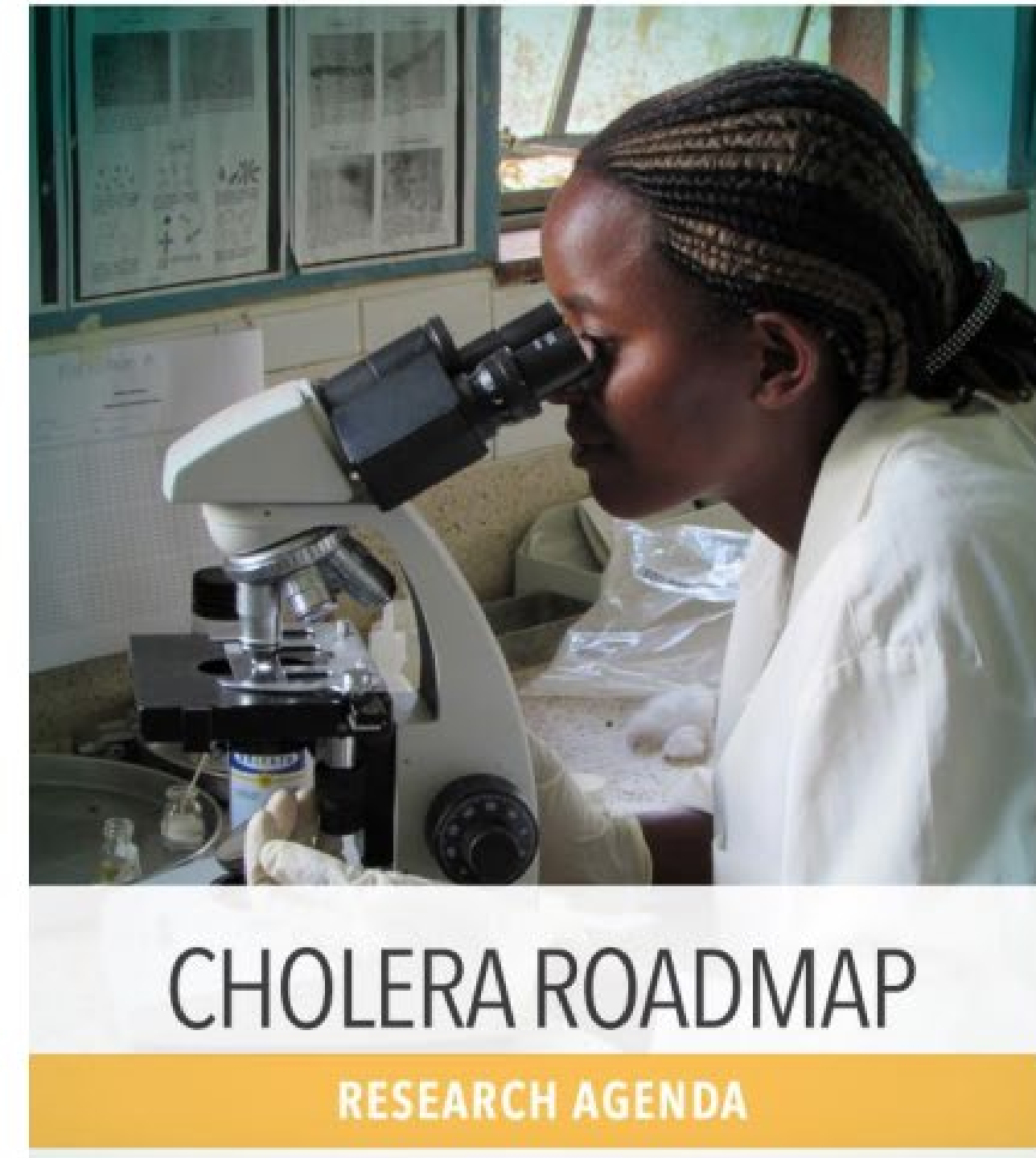


# The value of research for cholera control



Research can help us  
accelerate progress on  
cholera control: faster, better,  
at lower cost

What research is most  
needed to help countries  
meet the goals of the  
Ending Cholera Roadmap to  
2030?



# RESEARCH AND EVIDENCE



## “Traditional” research

- Academic institutions
- Scientific approach
- In-depth studies
- Often long-term and intensive



## “Operational” research

- Implementing organisations
- Impact and evaluation approach
- Protocol embedded within programme
- Can be short or long-term (including retrospective)



# GTFCC RESEARCH OBJECTIVES

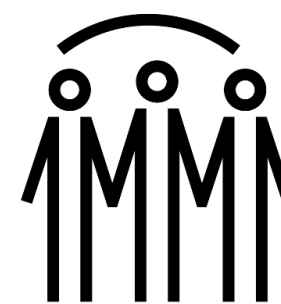


GLOBAL TASK FORCE ON  
**CHOLERA CONTROL**



## Global level

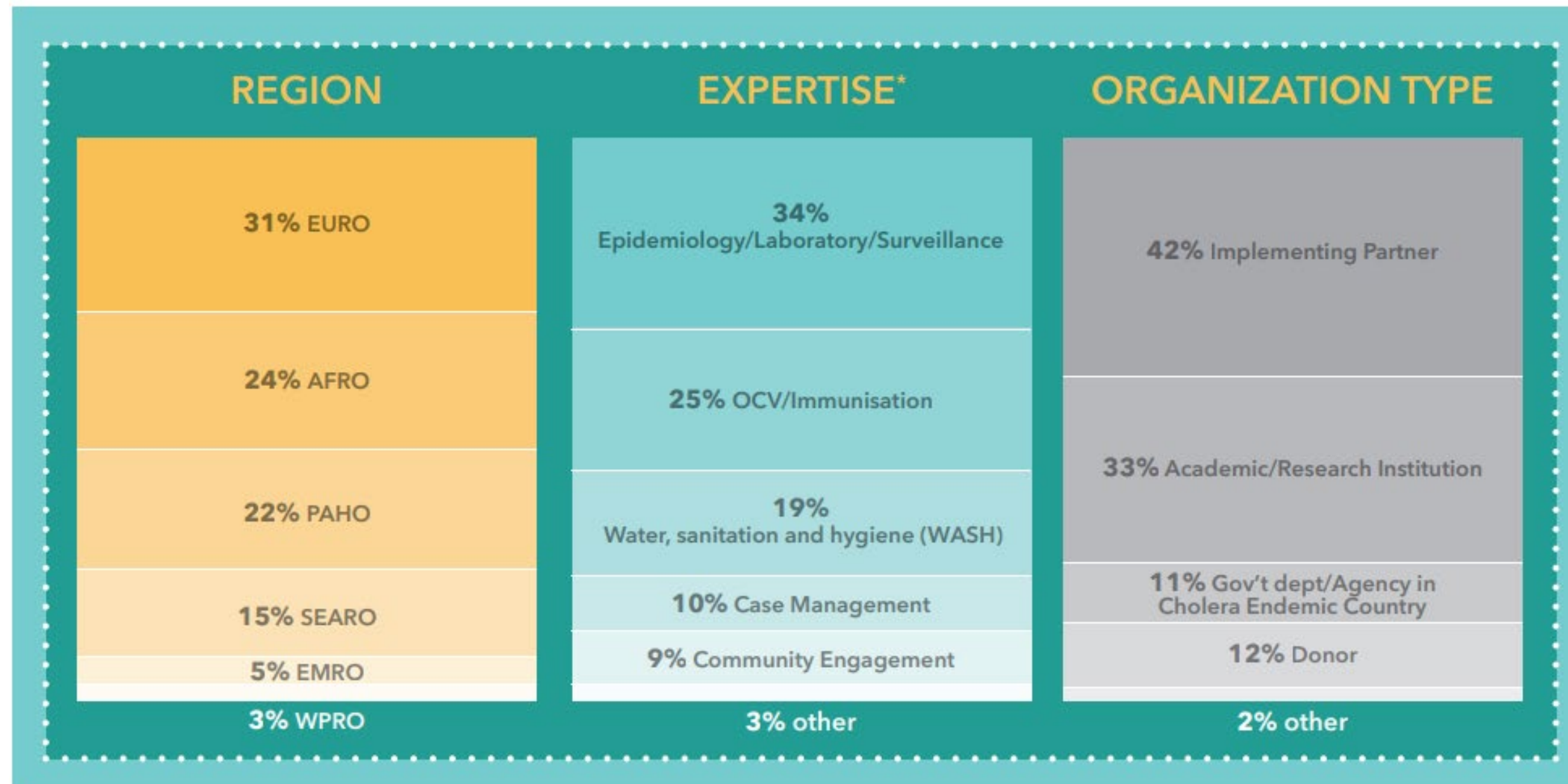
- Cholera research agenda
- Tracking cholera research
- Engagement with global research stakeholders
- Knowledge sharing at global level
- Engagement with research donors



## Country level

- Country research priorities
- Operational research support
- Connecting national and international research
- Knowledge sharing at country level
- National research donor engagement

# CHOLERA RESEARCH AGENDA 2021




## Completed 2019-2021

177 experts engaged to prioritise research questions

10% specialising in Case Management with strong engagement from CM working group

\* Given that cholera experts often have overlapping expertise and experiences (e.g., epidemiology is often a complementary expertise to other Roadmap pillar areas), the survey respondents were allowed to choose up to two areas of expertise.

# CHOLERA RESEARCH AGENDA 2021

Rank	Research Question
	<b>Case Management</b>
<b>1</b>	What are the barriers and enablers for integrating cholera treatment into community case management by community health workers?
<b>2</b>	What effect does treatment with antibiotics have on cholera transmission?
<b>3</b>	What is the optimal treatment schedule for antibiotic prophylaxis given to household contacts of cholera patients and does this have an effect on the magnitude, transmission and secondary attack rate of cholera outbreaks?
<b>4</b>	What are the common cholera treatment complications in vulnerable populations (for example: pregnant women, the elderly, those with severe acute malnutrition)?
<b>5</b>	Would rehydration solution for malnutrition (ReSoMal) formulated with higher sodium, or standard oral rehydration solution containing high potassium, result in lower mortality or morbidity, compared to the standard WHO rehydration solution, in children with severe acute malnutrition?

## IN TOP 20 PRIORITIES FOR COUNTRY RESPONDENTS

CM; CE	How, when, and where do people in the community seek care for cholera? What are the potential barriers (e.g. cultural and religious) to seeking timely cholera care.	<b>91.0%</b>	<b>11</b>
All	What is the role and added value of CORTs (community outreach response teams) in enhancing case investigation and outbreak detection?	<b>91.7%</b>	<b>12</b>



# Cholera Research Tracker

Searchable online platform of ongoing and recently completed cholera research projects that will help support collaboration and highlight trends, knowledge and funding gaps so that resources can be used effectively

PROJECTS



**62**

6 ACTIVE

COUNTRIES



**24**

24 ACTIVE

✓ *Case management - Community engagement - Epidemiology surveillance - Water, Sanitation and Hygiene (WASH)*

✓ *Bangladesh*

COMPLETED

PROJECT TIMELINE: 18/01/2021 - 01/12/2021

Serosurveillance to improve estimates of burden and at-risk populations of cholera and COVID-19

**Lead Researcher**

Dr. Firdausi Qadri, International Centre for Diarrhoeal Disease Research (icddr,b)

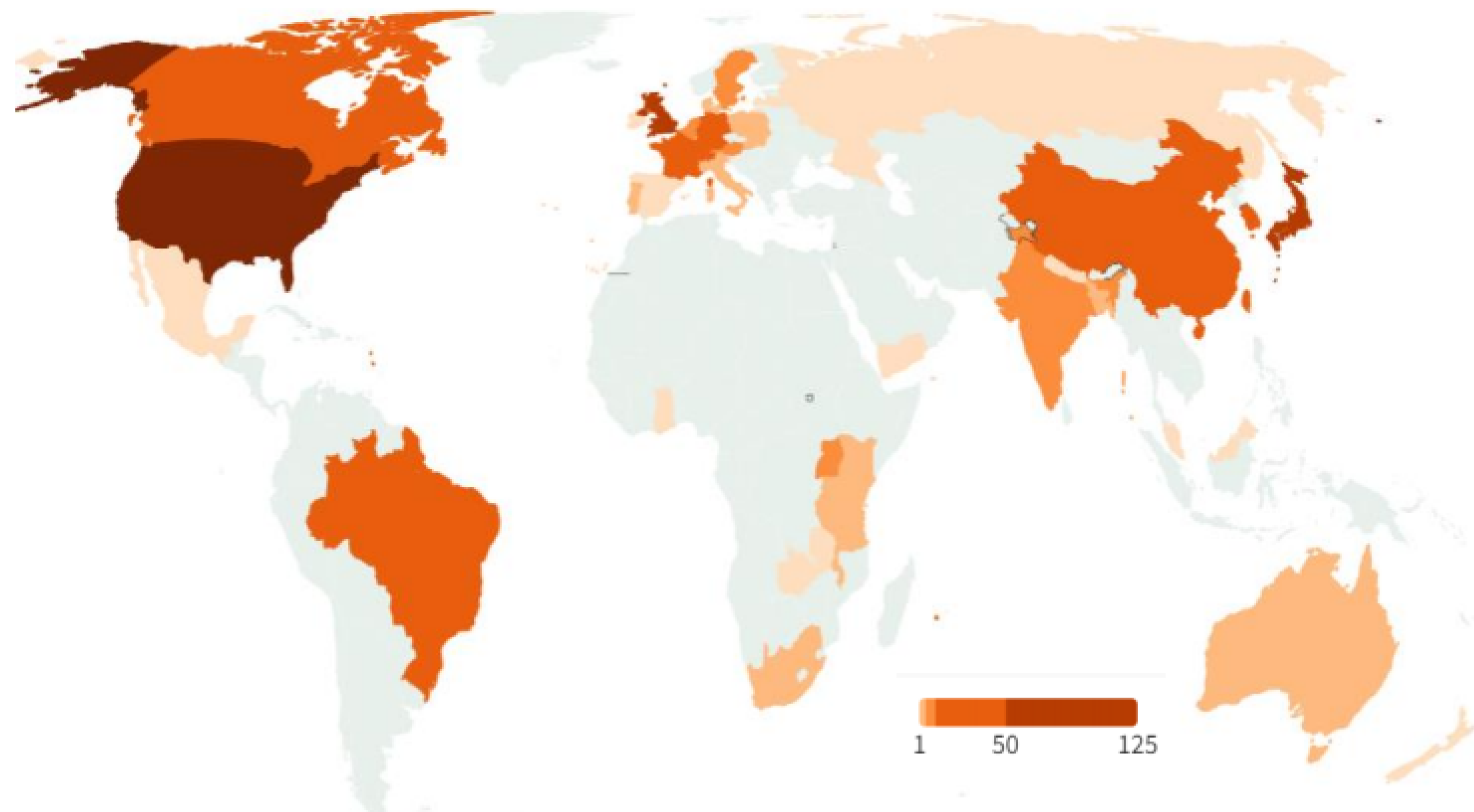
View





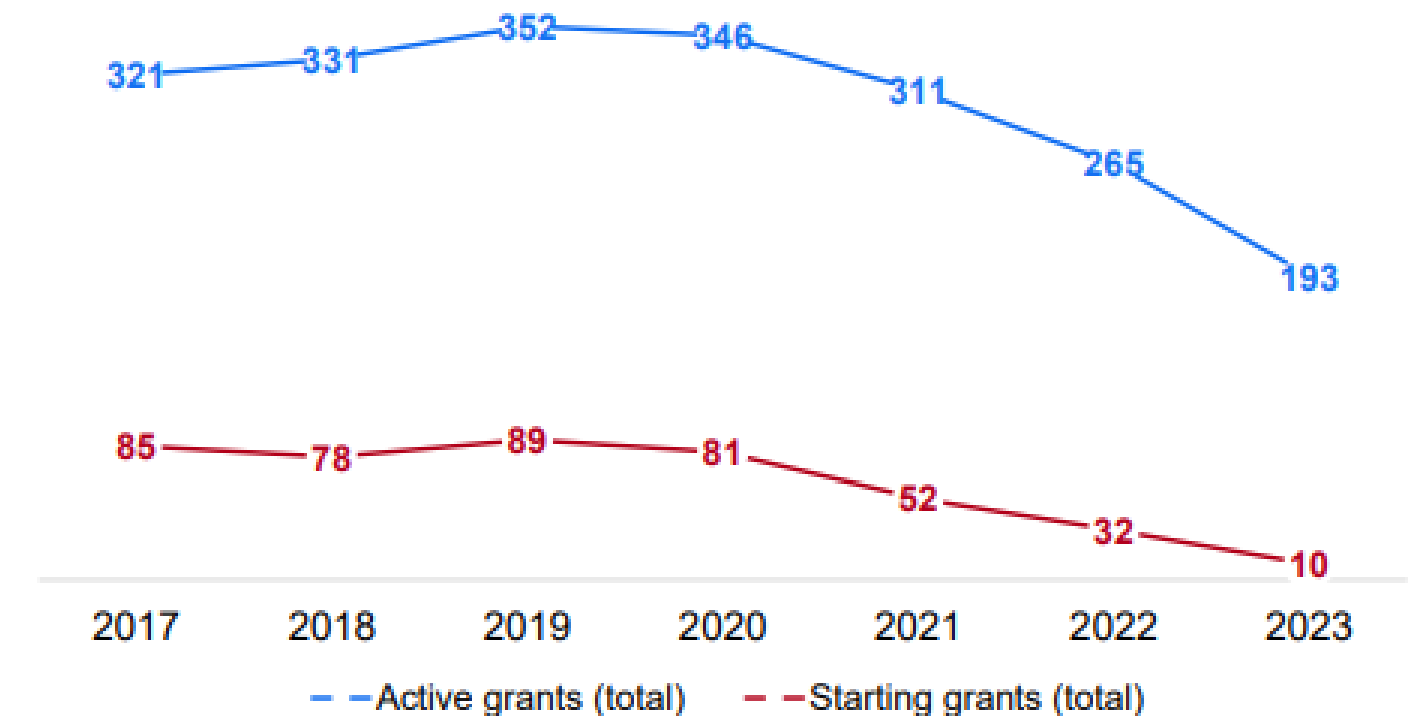
# Cholera Research Funding Landscape

Where are the research institutes that are being funded?



Locations of host research institutes receiving funding and how many grants they received during this period. This does not necessarily reflect where the research is being conducted – this is shown in the Research Tracker

## Active and Starting Grants



Aggregated funding amount: **245.1M** USD

Where does this funding come from?

27.5% NIAID  
17.9% BMGF  
9.5% NIGMS  
8.8% Wellcome

# Advocacy and Action

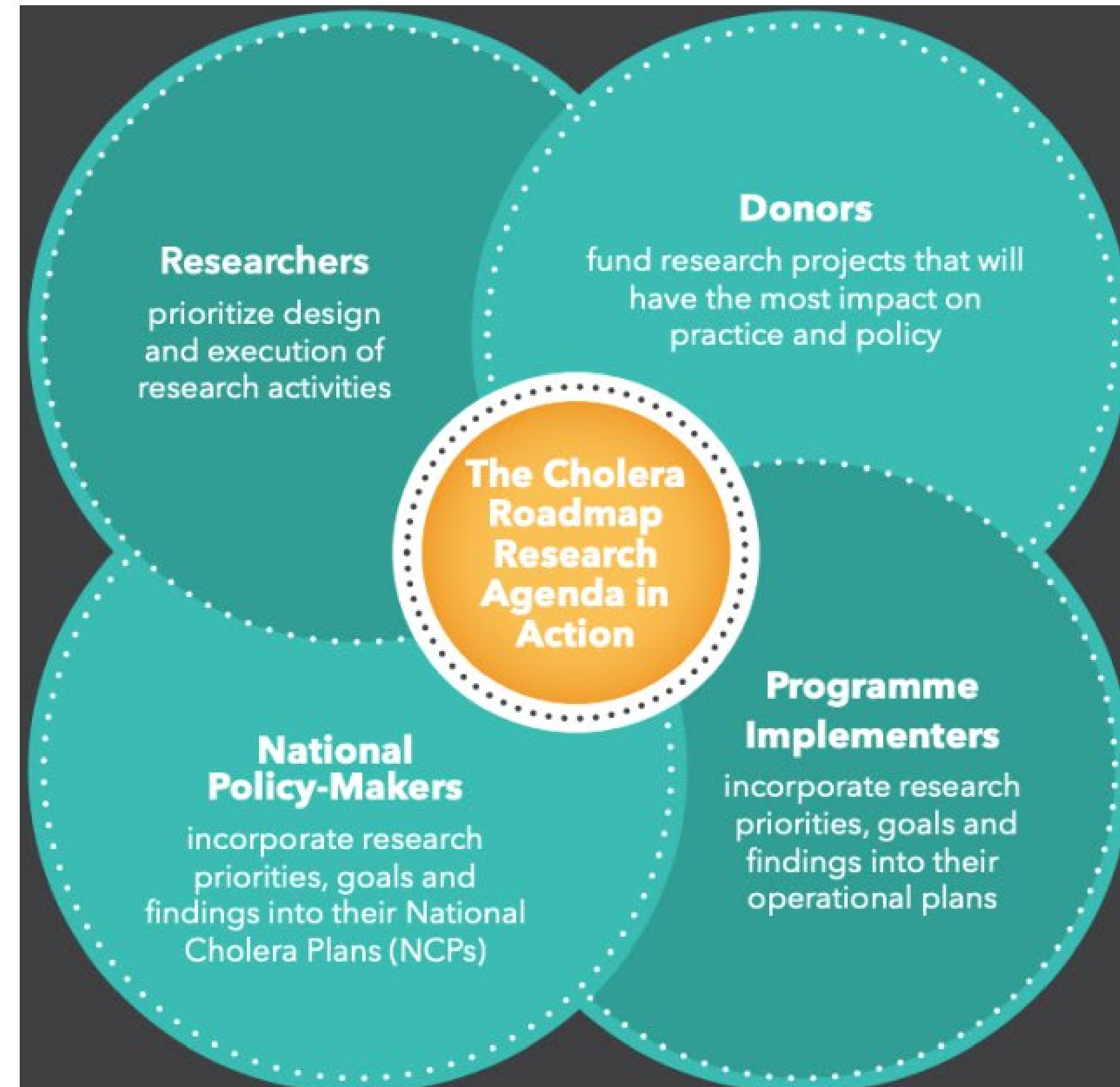
The Research Agenda and Tracker can be used to raise the profile of cholera research

- ❖ Shows context of individual projects - the whole is greater than the sum of its parts
- ❖ Shows momentum and importance placed on research by the cholera community
- ❖ Provides direction with actionable recommendations and enables monitoring of progress

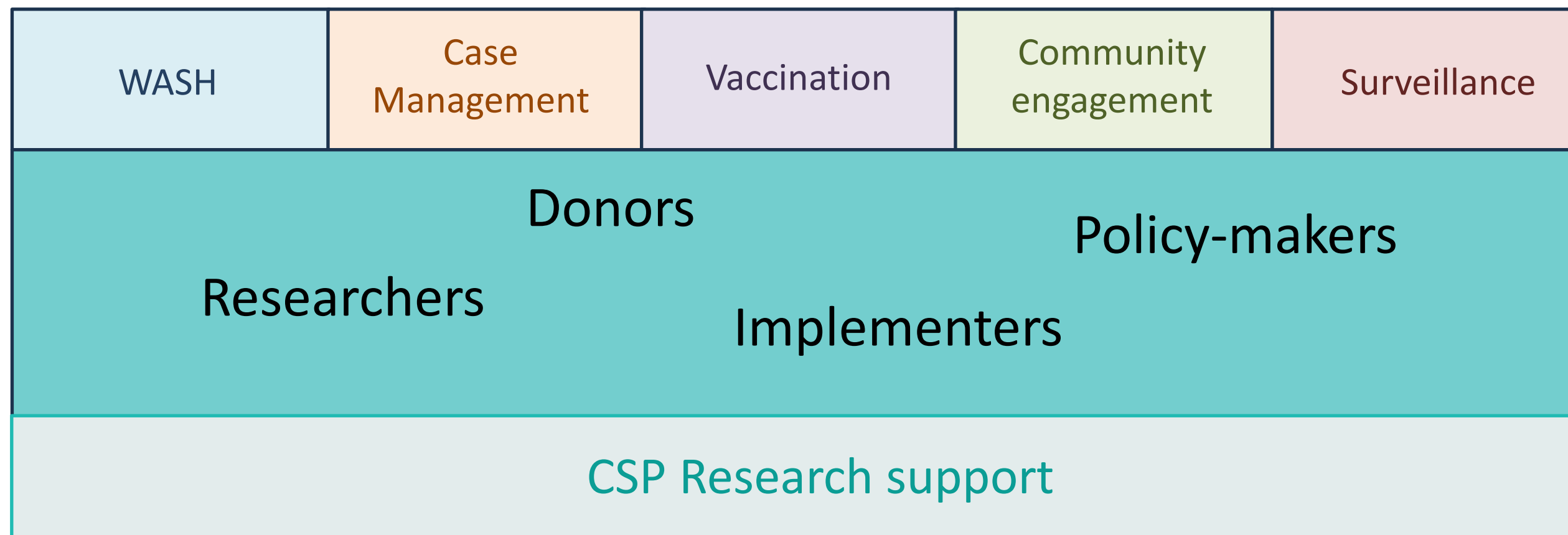
**Call to partners involved in research studies:**

Please submit details to the Cholera Research Tracker:  
<https://www.gtfcc.org/cholera-research-tracker/submit-your-project/>

Email [cholera-research-tracker@gtfcc.org](mailto:cholera-research-tracker@gtfcc.org) to update your project details



# RESEARCH UPTAKE OBJECTIVES



# NEXT STEPS

## HOW?

### 1. How do things work now?

Overview of existing research at Global and Country level  
Identify key stakeholders to engage on research uptake  
Understand how research is incorporated into NCP implementation



### 2. How could things work better?

### 3. What support can CSP and others provide?

### 4. How to implement sustainably?



# Discussion

