



República de Moçambique
Ministério da Saúde

Improving data collection for cholera Mozambique

25th September 2023



MISAU

Epidemiological analysis of cholera/AWD in Mozambique

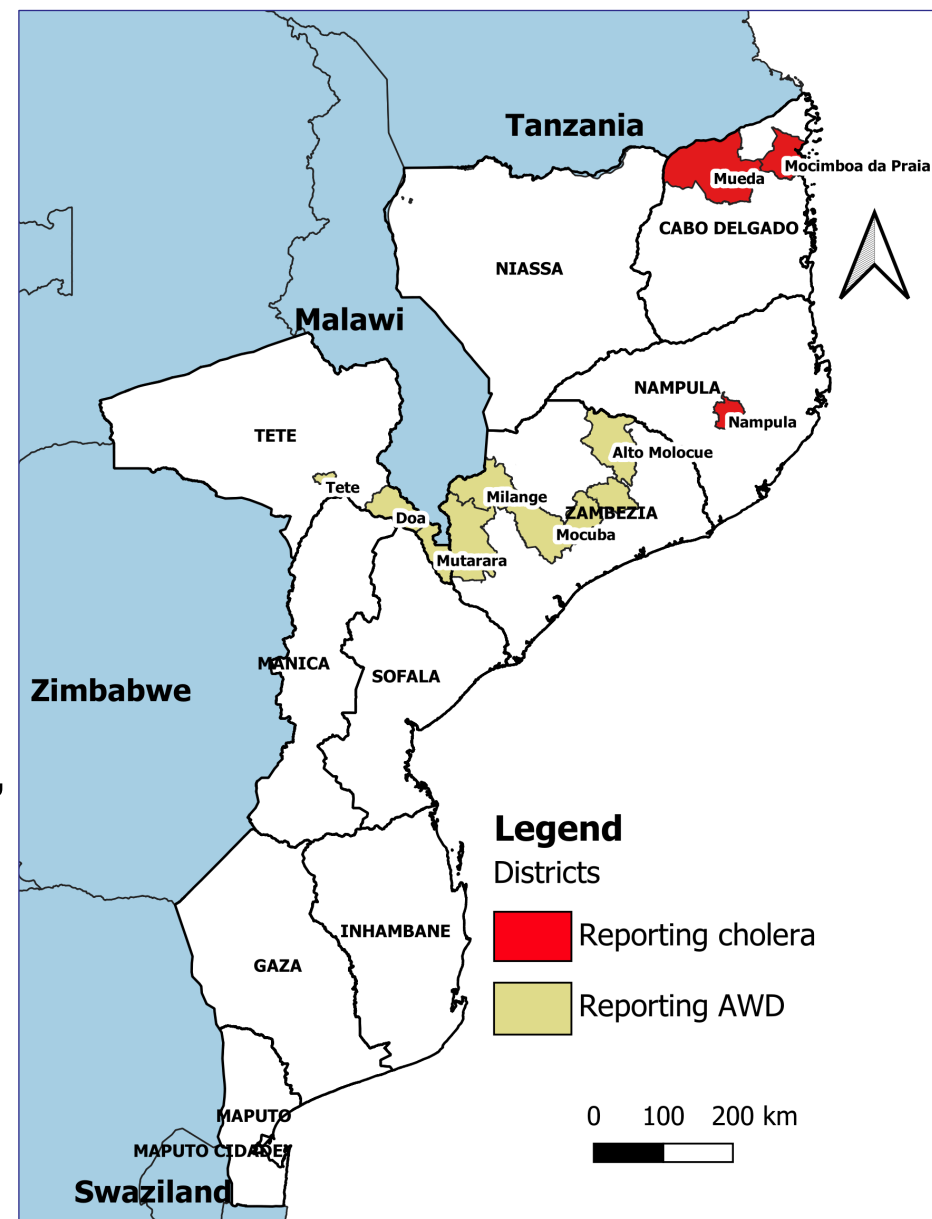
– Cholera cases (11th Sep 2022 to 24th Sep 2023)

National Figures (as of 24th September, 2023)

- 34,645 cholera cases and 144 intra-hospitalar deaths (CFR=0.4%)
- 3 active districts out of 67 affected districts (Nampula City, Mueda and Mocimboa da Praia)
- 1 district reporting new cases (Nampula City)
- Increase in AWD cases in Tete and Zambezia Provinces:
 - Tete: Doa, Mutarara and Tete City
 - Zambezia: Alto Molocue, Milange, Mocuba, Morrumbala and Mulevala
- Districts bordering Malawi where AWD cases are reported: Doa, Mutarara, Milange and Morrumbala

Trend (week 38)

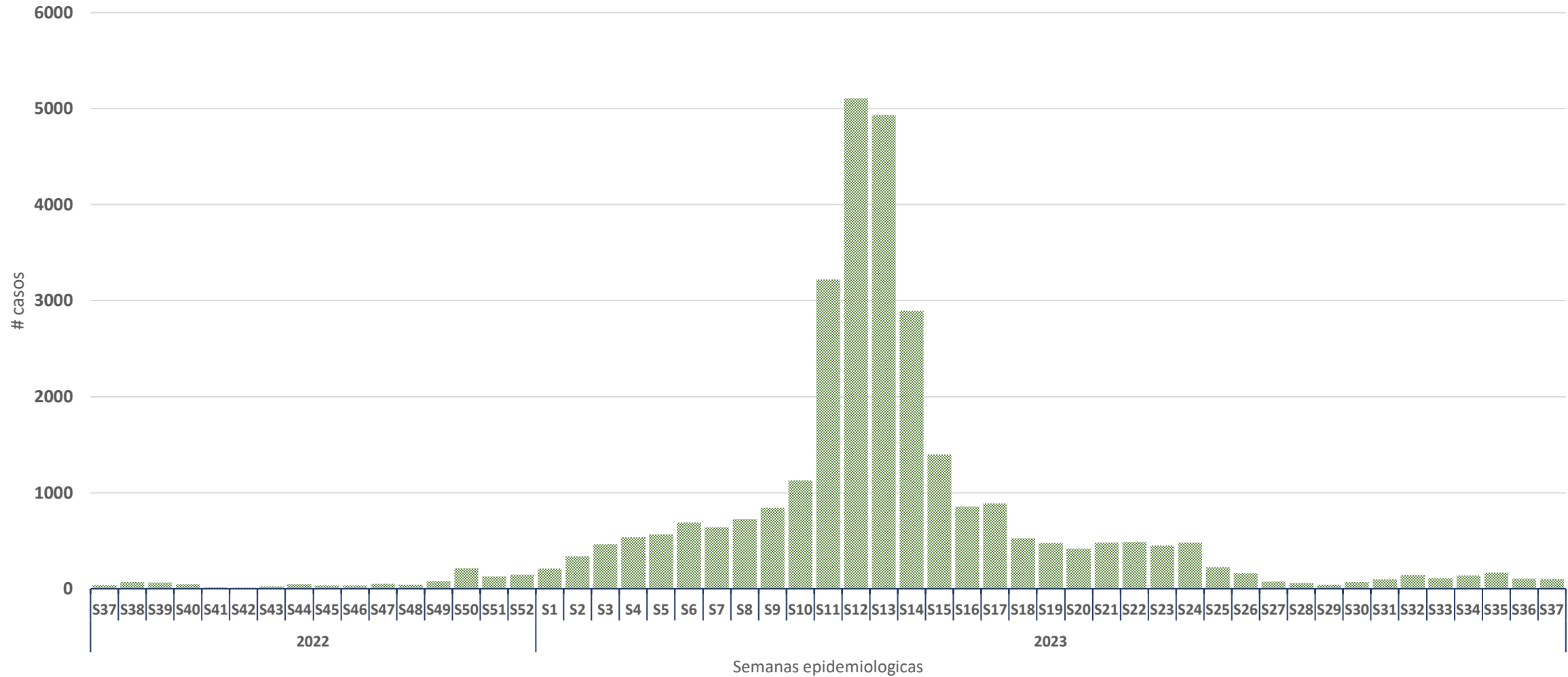
- **Cholera cases:** Nampula City (127 with no deaths)





MISAU

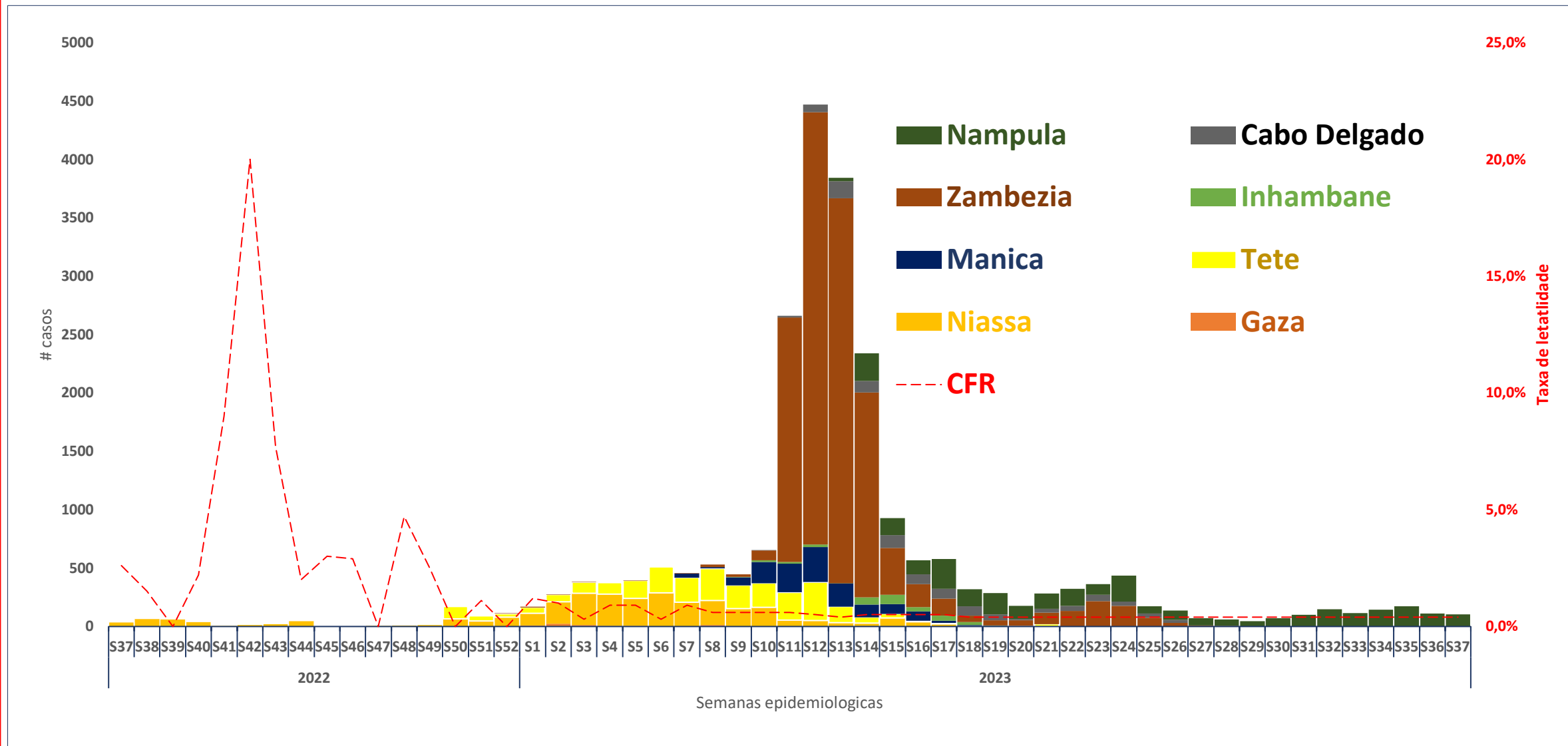
Cholera epidemic curve





MISAU

Cholera cases VS case fatality rate



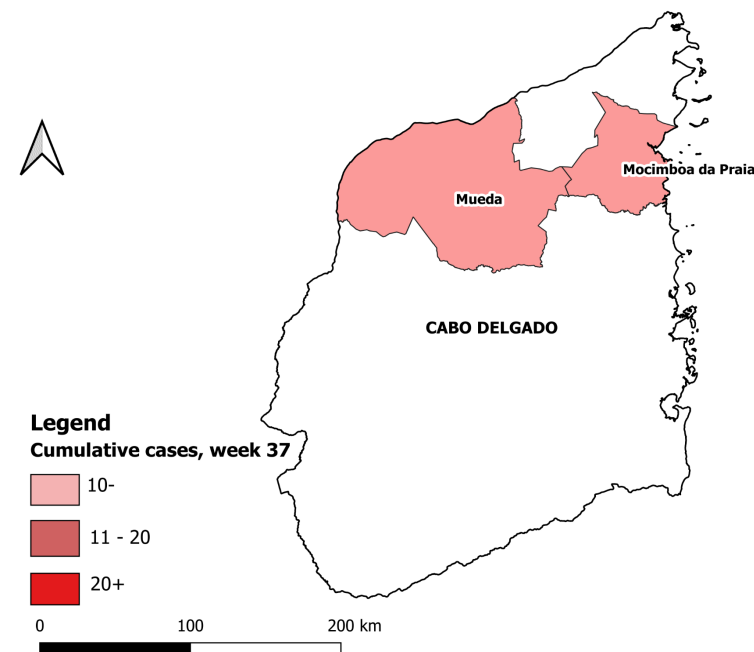
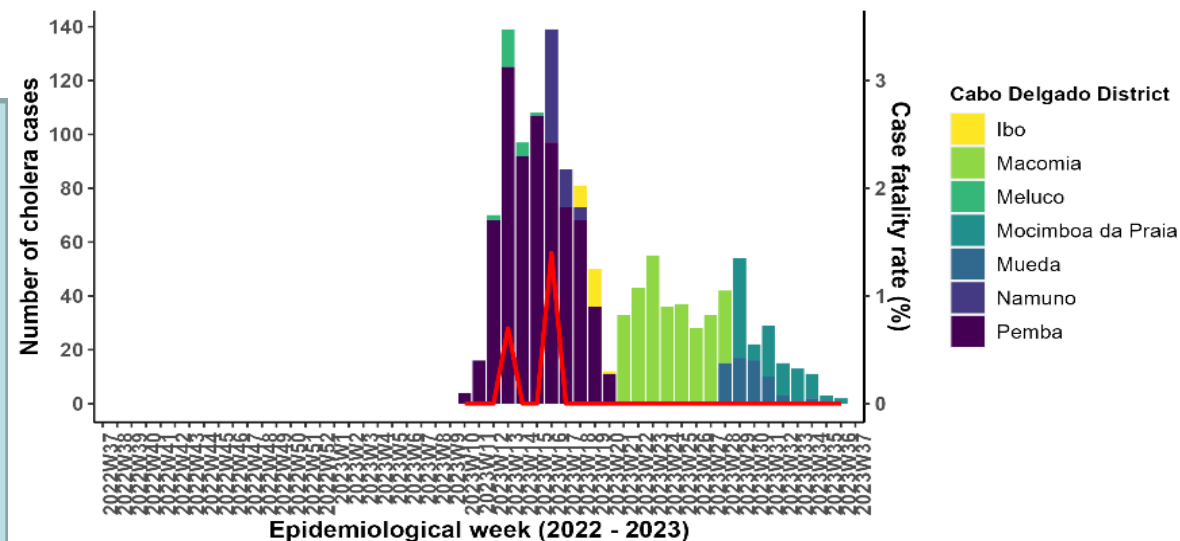


MISAU

Cabo Delgado Province

Current epidemiological situation as of 20/09/2023:

- Cholera outbreak since **13 March 2023**, with a total of 1,230 cases and 3 deaths (CFR=0.4%)
- 7 affected districts
- Mueda has 27 days without reporting cases
- Mocímboa da Praia has not reported cases from week 36
- No AWD cases reported currently



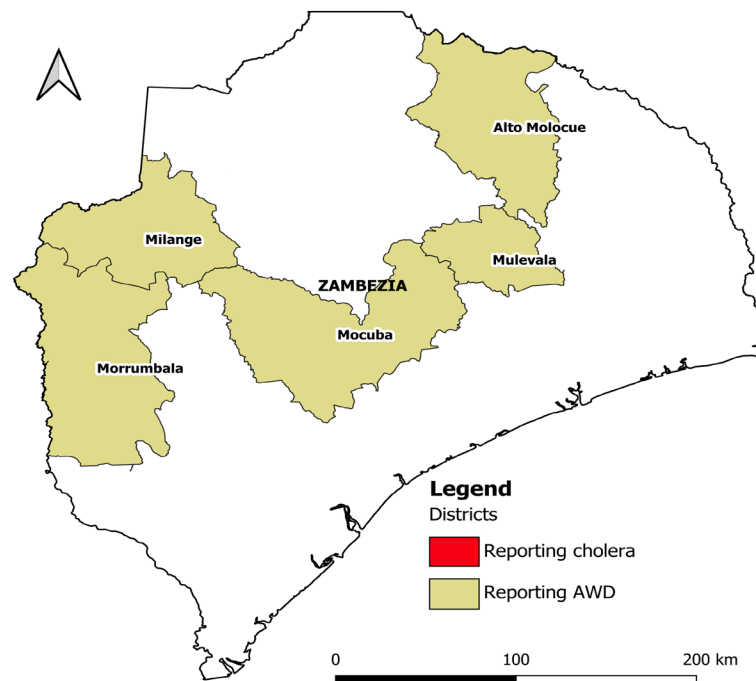
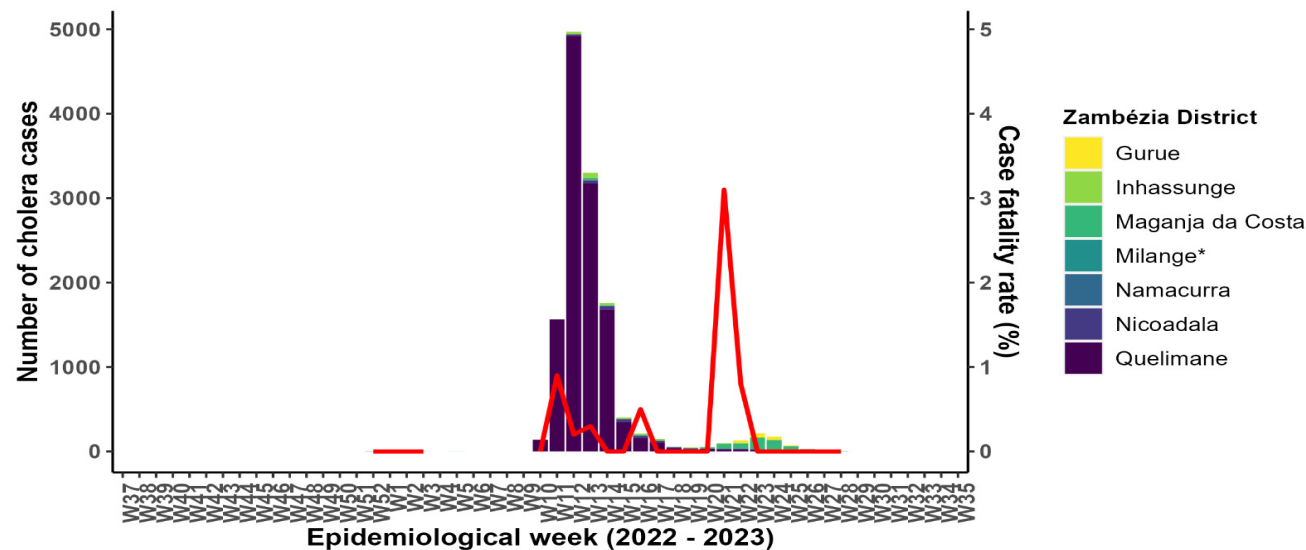


MISAU

Zambezia Province

Current epidemiological situation as of 24/09/2023:

- No active districts
- 5 districts reporting AWD cases
- Alto Molocue has experimented a decrease of cases in week 38 comparing with week 37



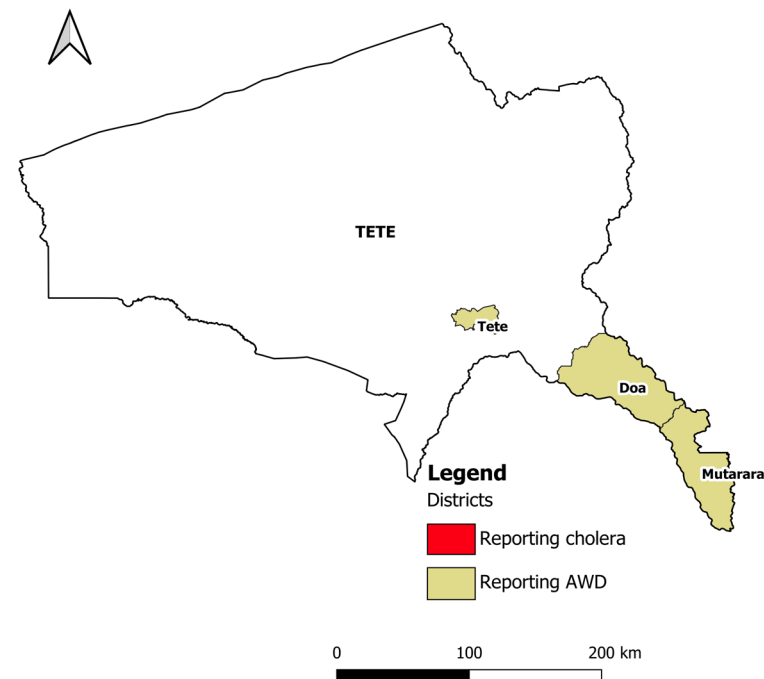
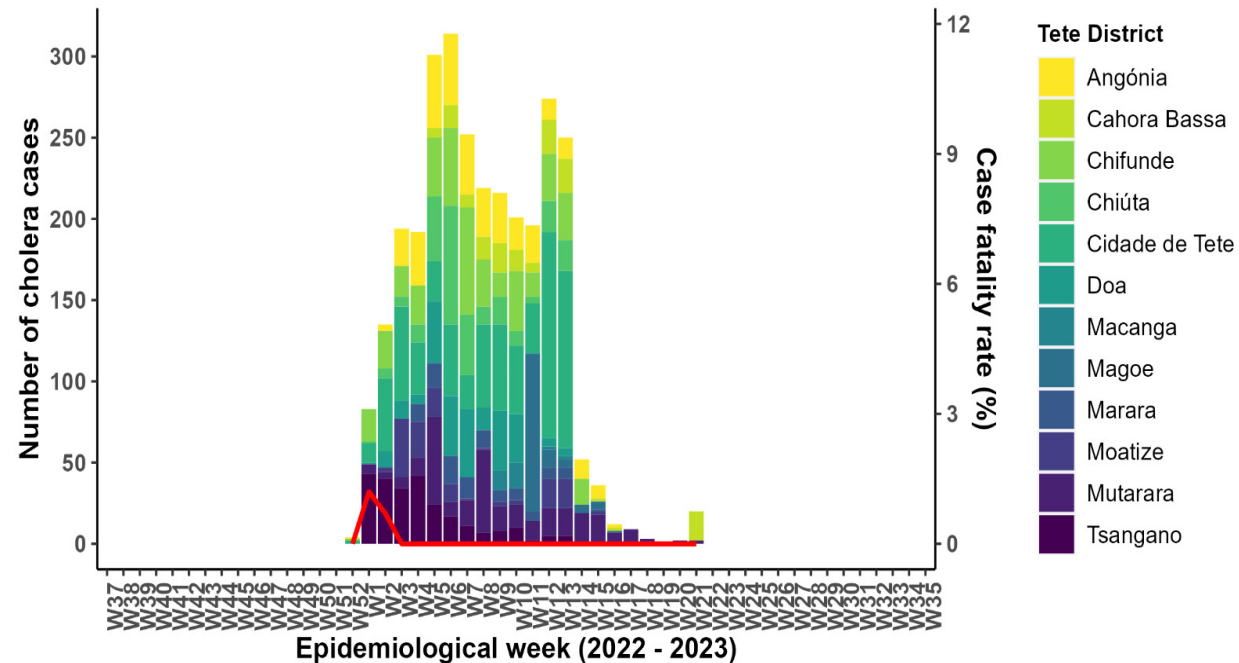


MISAU

Tete Province

Current epidemiological situation as of 24/09/2023:

- No active districts
- 3 districts reporting AWD cases





List of Variables collected in the Country on cholera data collection tool

Variables	
1. Hospitalization	2. Outpatient Clinic
Name	
Age	
Gender	
Province	
District	
Neighborhood	
Block	
Health Facility	
Date of visit to the health facility	
Case hospitalized 1: Yes 2: No	
Date of Onset of the Disease	
1: Acute Diarrhea as Rice Water 2: Acute Aqueous Diarrhea	
1: Vomits 2: No vomits	

Variables			
1: Mild dehydration	2: Moderate Dehydration	3:	
Severe Dehydration			
0: No signal	1: Abdominal cramps	2:	
Cramps on the legs and arms	3: Generalized weakness		
4: Headache			
Treatment received:	1: SRO	2: Fluids IV	3:
Antibiotics			
RDT results:	0: Not done	1: Positive	2: Negative
Swab or sample of feces taken	1: Yes	2: No	9: Not known
Laboratory Results of Culture:	0: Not done	1: Positive	
2: Negative	3: Pending		
Oral Cholera Vaccine Doses Received			
0: None	1: One dose	2: Two doses	



List of Variables collected in the Country on cholera data collection tool, (Cont.)

Variables			
Outcome	1: Discharge	2: Deat	9:Not known
Date of death			
Place of death	1: Health Facility	2: Comunity	
Date of discharge			
Number of days of hospitalization			
Comments			



MISAU

NOTES

There is not a system that collects information on community deaths that's why the country only reports intra hospitalar deaths



MISAU

MUITO OBRIGADO!