



GLOBAL TASK FORCE ON
CHOLERA CONTROL

**GT FCC FRAMEWORK FOR THE IDENTIFICATION OF
PRIORITY AREAS FOR MULTISECTORAL INTERVENTIONS
FOR CHOLERA ELIMINATION**

Elizabeth Lee
John Hopkins University
GT FCC sub-group lead
02 May 2023

CHOLERA "ELIMINATION"

ENDING CHOLERA:
A global roadmap to
2030

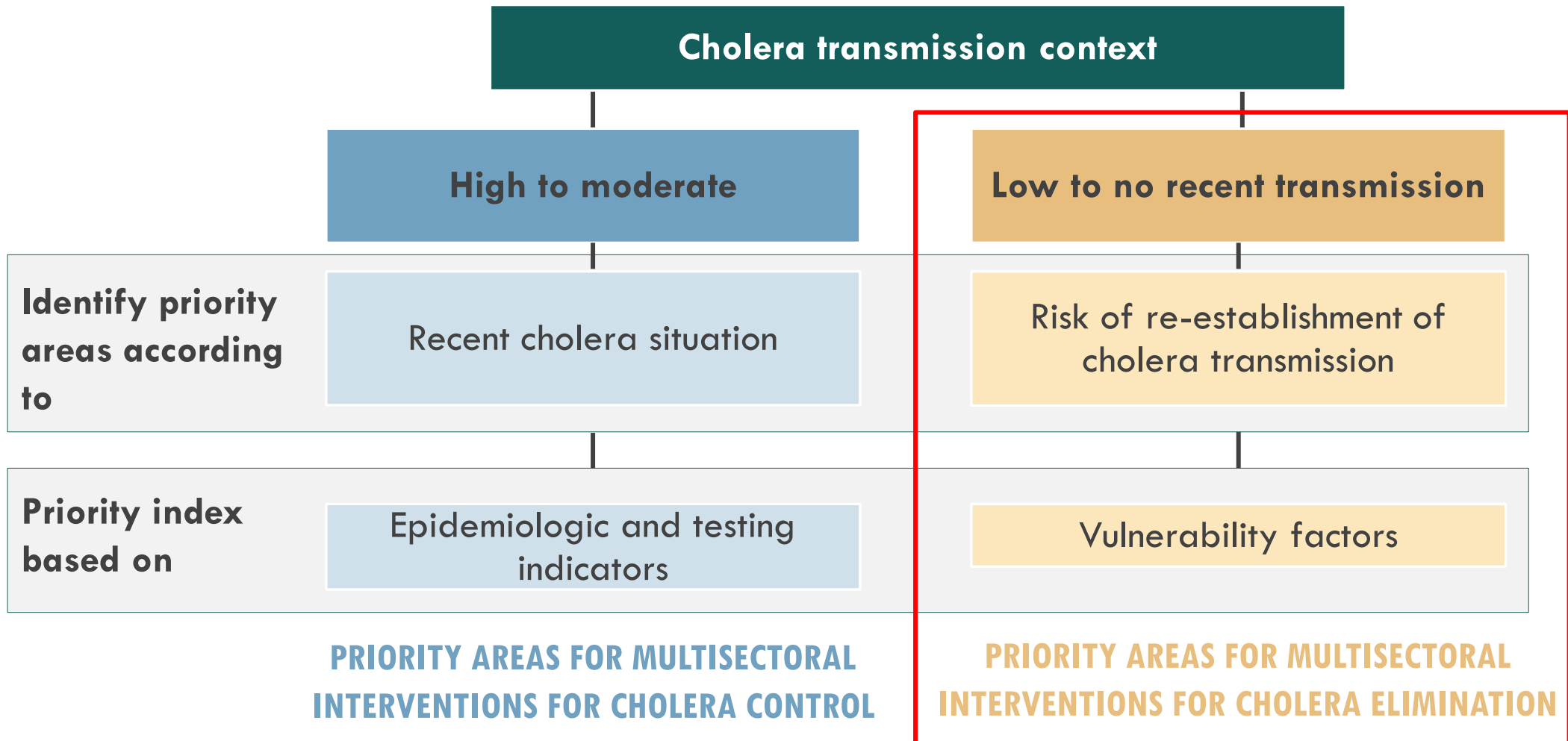
By 2030

- 20 countries
eliminate cholera

Sustainable 'elimination' of cholera means that NCPs should mitigate **vulnerabilities in the re-establishment of cholera transmission**

Cannot use PAMIs for cholera control guidance for prioritization because few cases should be reported in the analysis period

PAMIS FRAMEWORK: Control versus elimination





WHEN TO USE THIS METHOD

Towards the beginning of NCP inception

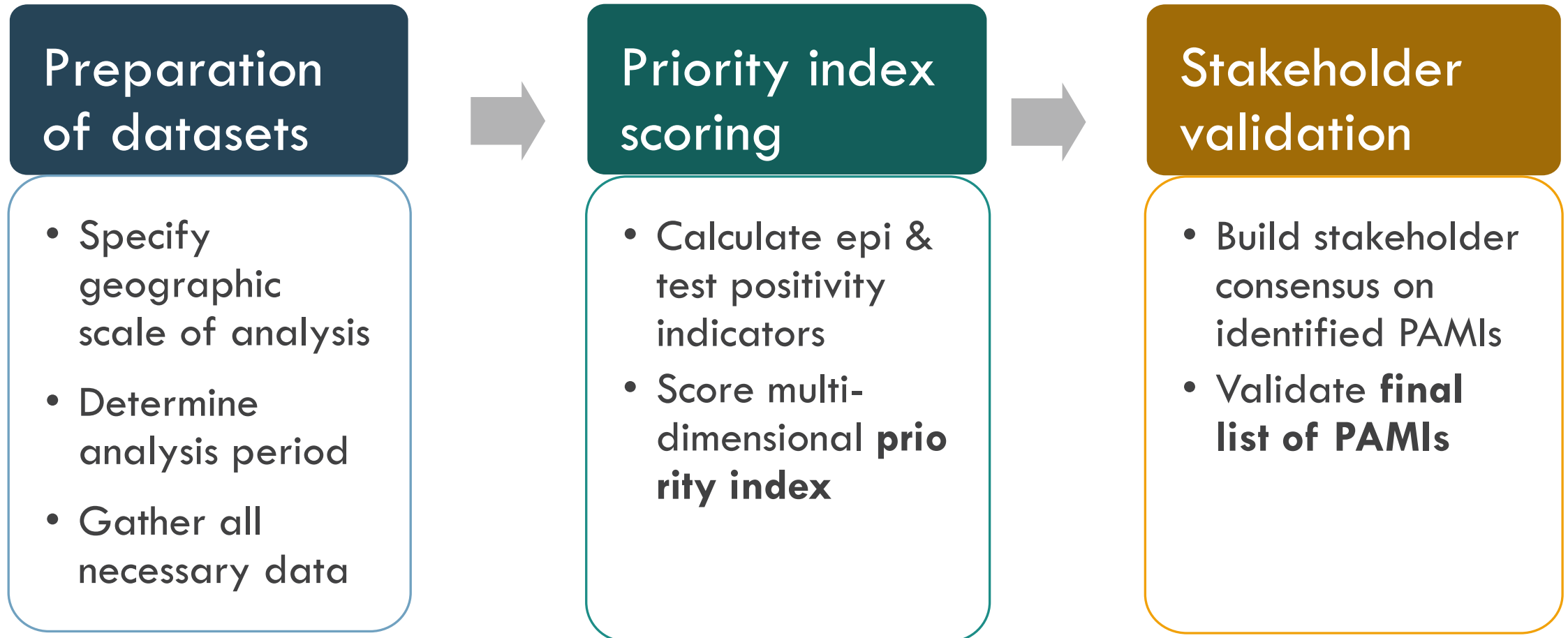
Indicative rule: Use in countries where cholera outbreaks were reported in less than **5%** of the geographic units over at least the **past 5 years**

IDENTIFICATION OF PAMIS FOR **CHOLERA ELIMINATION** (IN DEVELOPMENT)



IDENTIFICATION OF PAMIS FOR CHOLERA ELIMINATION

Three-step process



PREPARATION OF DATASETS



Define the administrative level of NCP operational unit



Define the analysis period (5 to 15 years)



- Identify country-specific vulnerability factors
- Compile data

RATIONALE FOR PROPOSED VULNERABILITY FACTORS

Indicative list of **vulnerability factors** linked to at least one cholera **outbreak phase**

Introduction

Introduction of toxigenic *Vibrio cholerae* O1 or O139 from a cholera affected area into a new geographic unit

Onset

Cholera transmission in a geographic unit (i.e., local development of a cholera outbreak)

Spread

Spread to multiple geographic units

INDICATIVE LIST OF VULNERABILITY FACTORS

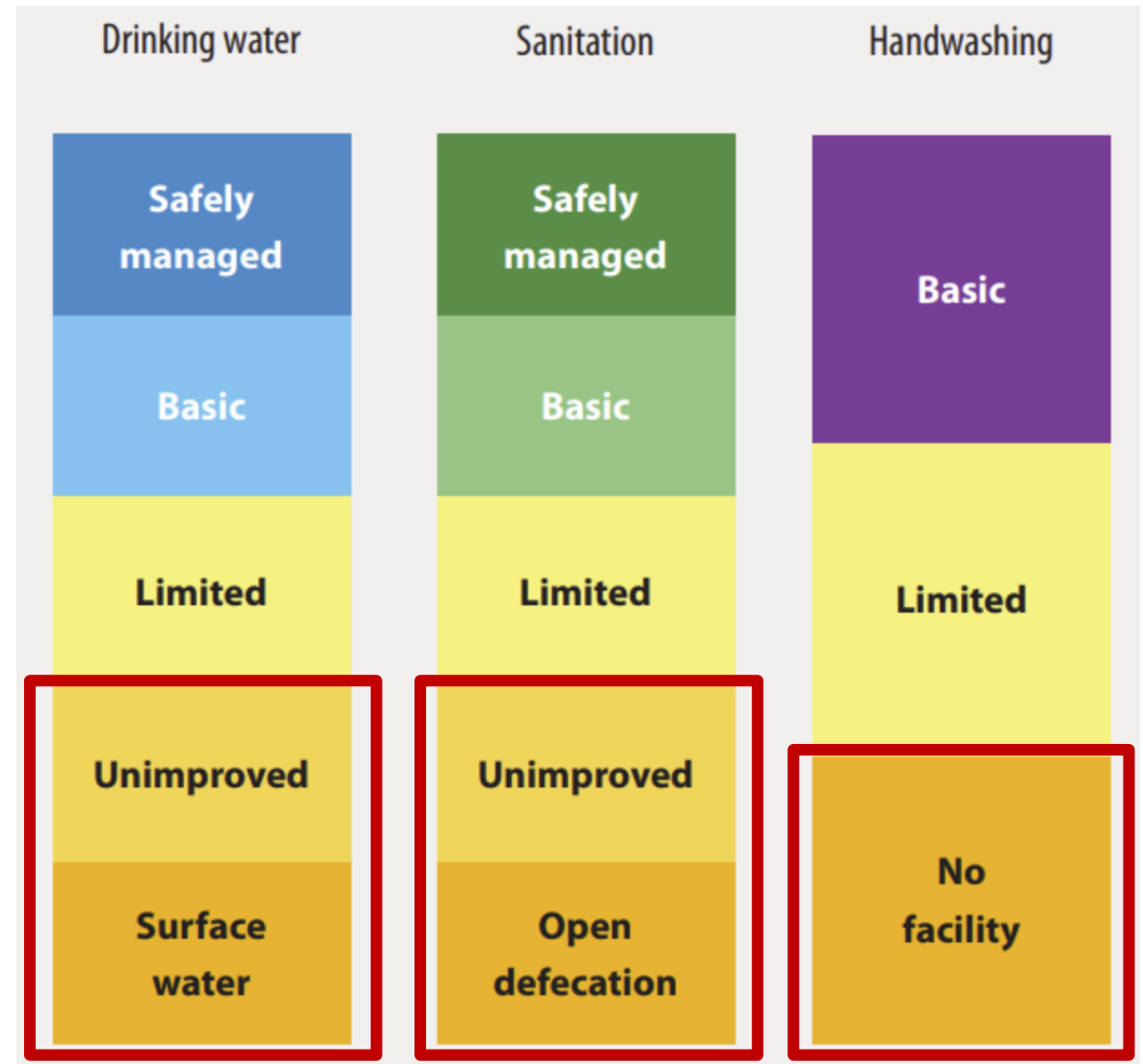
non-WASH-related

Vulnerability factors	Contribution to epidemic phases		
	Introduction	Onset	Diffusion
• Cholera outbreak in the past 5 years	✓	✓	✓
• Location adjacent to cross-border cholera-affected areas or identified PAMIs	✓	✓	
• Location along major travel routes with transportation hubs	✓		✓
• Major population gatherings	✓		
• Areas with high population density or overcrowded settings		✓	✓
• Areas with high-risk populations		✓	✓
• Hard-to-access populations		✓	
• Population received oral cholera vaccine more than three years ago	✓	✓	✓
• Areas at high-risk for extreme climate and weather conditions		✓	✓
• Areas affected by complex humanitarian emergencies		✓	✓

VULNERABILITY FACTORS

WASH-related

- Standard definitions
- [WHO/UNICEF Joint Monitoring Program for Water Supply, Sanitation and Hygiene \(JMP\)](#)
- Depends on data available in NCP operational units



“high risk” categories for waterborne diseases

VULNERABILITY FACTORS

WASH-related

Vulnerability factors	Outbreak phases		
	Introduction	Onset	Diffusion
<p>Water</p> <p>More than 30% of the population using unimproved water facility type or below OR more than 15% using surface water</p>		✓	✓
<p>Sanitation</p> <p>More than 50% using unimproved sanitation facility type or below OR more than 30% practicing open defecation</p>		✓	✓
<p>Hygiene</p> <p>More than 50% with no handwashing facility on premises</p>		✓	✓

PRIORITY INDEX SCORING



Score all vulnerability factors



Calculate priority index

SCORING OF VULNERABILITY FACTORS

For each NCP operational unit

- Vulnerability factors
 - **Presence = 1 point**
 - Absence = 0 point
- For the three WASH-related indicators
 - **Equal or greater than the cut-off value(s) = 1 point**
 - Lower than the cut-off value(s) = 0 point

PRIORITY INDEX

Priority index =

Sum of vulnerability factor and WASH indicator scores

STAKEHOLDER VALIDATION



Participative workshop with multisectoral stakeholders



- Validate list of vulnerability factors
- Agree on a priority index threshold value
- Develop consensus on the final list of PAMIs

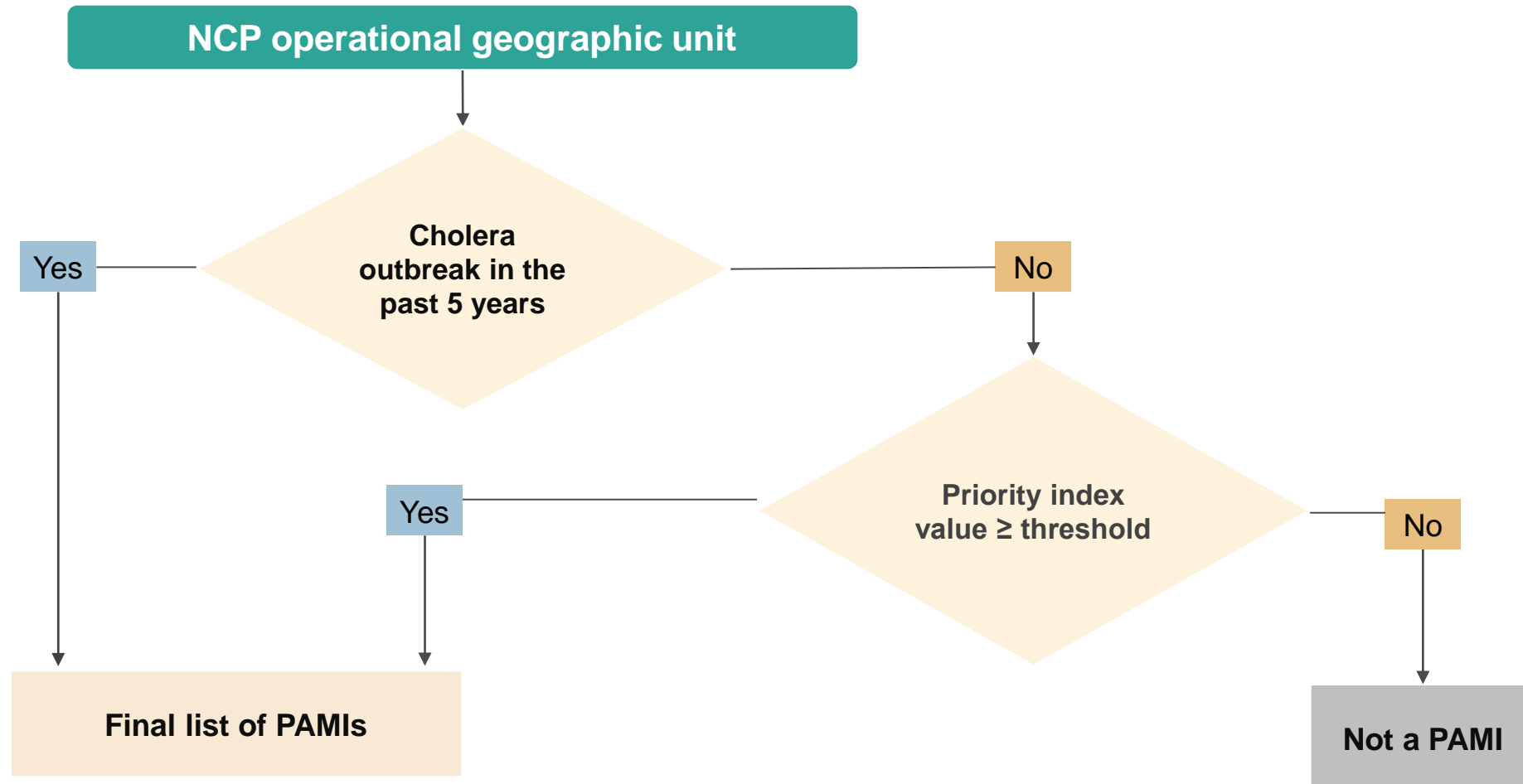


Write report on PAMI identification

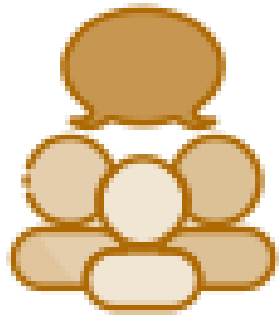


Launch next steps of NCP development

SELECTION OF PAMIs FOR ELIMINATION



NEXT STEPS



Continue method development



Develop guidance and supporting materials

Thanks!

Subgroup members

Balami Kumshida
Bouhenia Malika
Breakwell Lucy
Camacho Anton
Dominguez Morgane
Finger Flavio
Gabastou Jean Marc
Hampton Lee
Heitzinger Kristen
Iliya Cheshi
Kamadjeu Raoul
Kanungo Suman
Knowles Becky
Lee Elizabeth

Matar Ghassan
Nomhwange Terna
Okon Anthony
Omer Mohamed Diaaeldin
Quilici Marie Laure
Russell Allyson
Sauvageot Delphine
Sax Laurent
Sinha Antara
Sodjinou Vincent
Sudre Bertrand
Tayyab Muhammad
Valingot Christophe
Wang Xin
Wauquier Nadia
Wendland Annika

Pilot countries

DRC (Dr Placide Okitayemba Welo)
Mali (Dr Parciekle Jose Pomme)

Thank you

Together we can
#endcholera



GLOBAL TASK FORCE ON
CHOLERA CONTROL