



GLOBAL TASK FORCE ON
CHOLERA CONTROL

**IDENTIFICATION OF PRIORITY AREAS FOR MULTISECTORAL
INTERVENTIONS (PAMIS) AND DEVELOPMENT
OF NATIONAL CHOLERA PLANS (NCP)**

Denis Coulombier, Consultant
Country Support Platform
(CSP)

02 May 2023

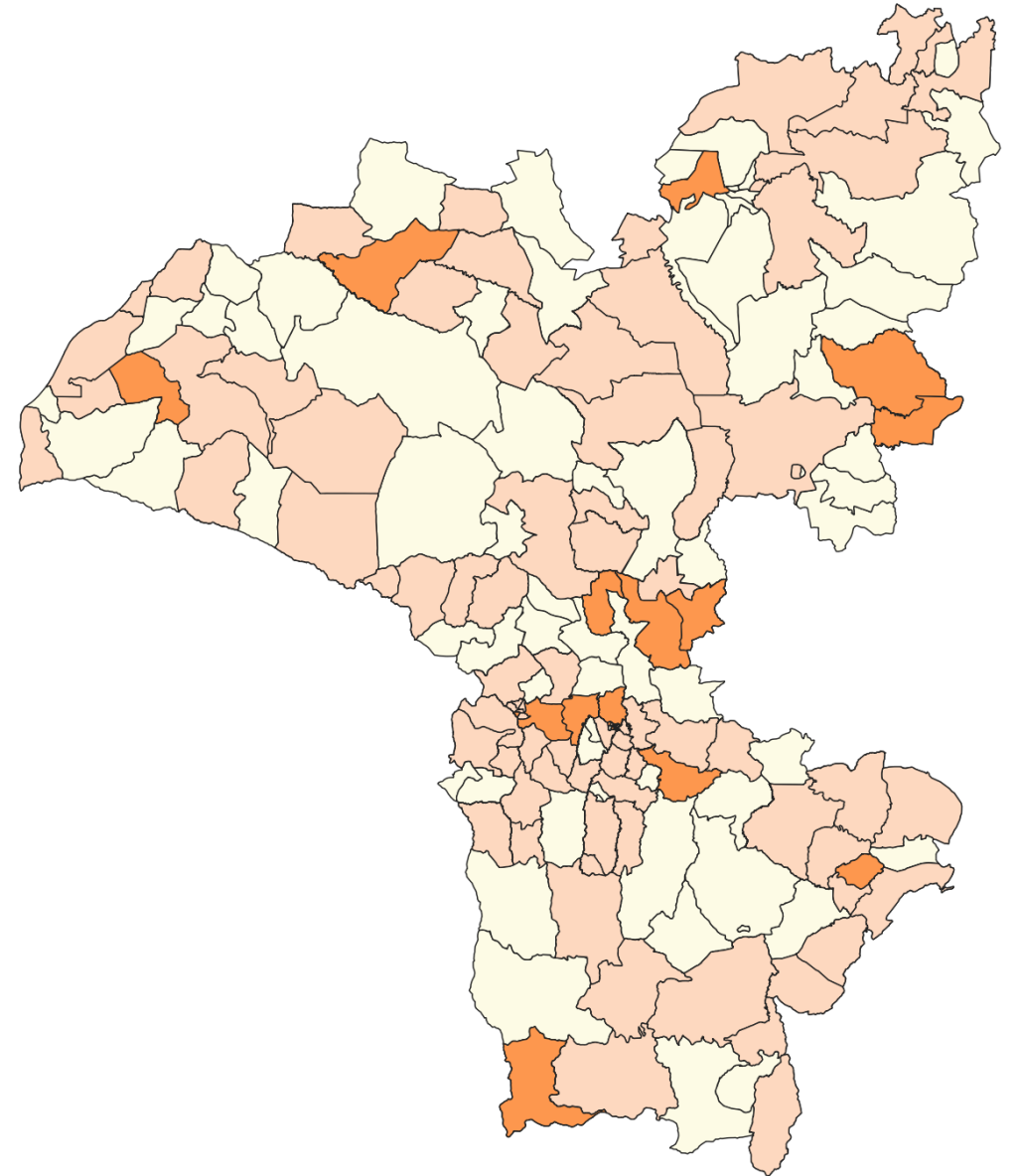
OBJECTIVES

Set the scene for
the session

- **Why is the identification of priority areas a cornerstone for achieving cholera control & elimination?**
- **Where does it fit into the cholera control & elimination process?**
- **How are the outcomes used in practice to guide cholera control & elimination ?**

Identification of Priority Areas

- Why is the identification of priority areas a cornerstone for achieving cholera control & elimination?



GTFCC GLOBAL ROADMAP

Back to the Roots...

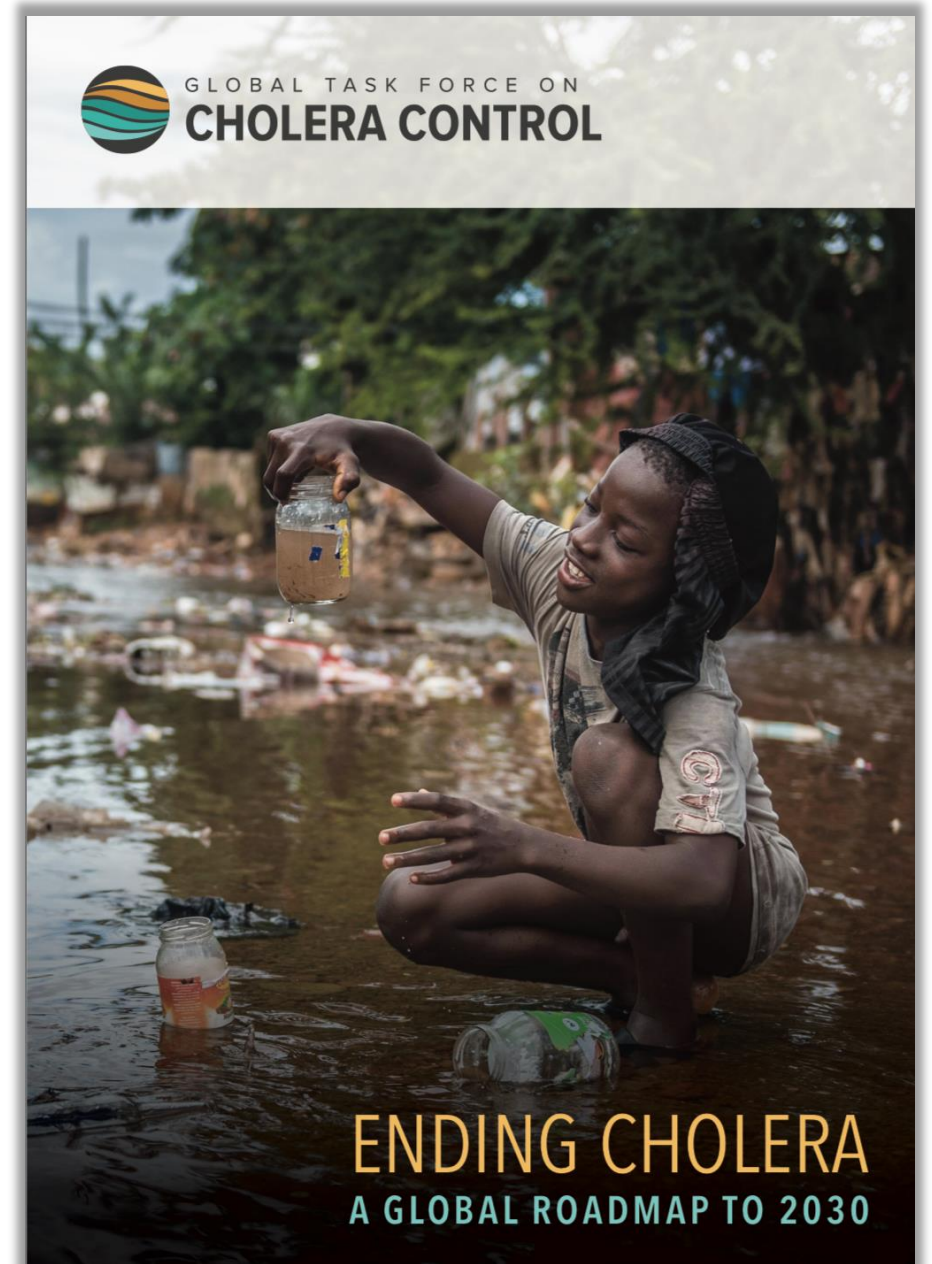
Targets

By 2030

- 20 countries eliminate cholera
- 90% reduction in cholera deaths

Strategy

- National Cholera Plans (NCPs)
- Spatially targeted
- Multisectoral interventions



GTFCC GLOBAL ROADMAP

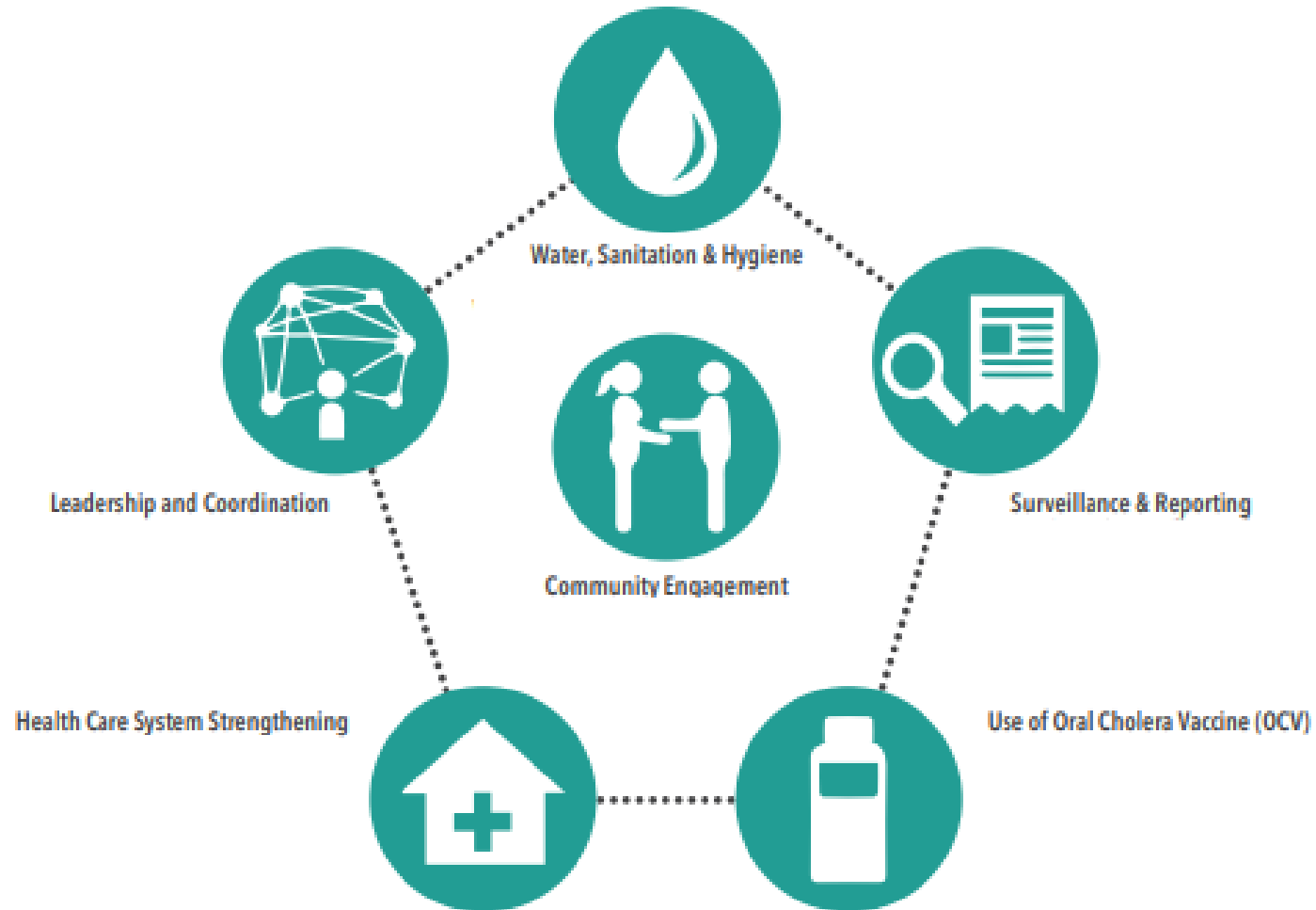
Spatially targeted NCPs

- Focus control and elimination programmes to “specific and relatively small areas where the cholera burden is most concentrated”
- Aim to maximize **public health impact** and **cost-effectiveness**
- “Cholera hotspots” or “PAMIs” [Priority Areas for Multisectoral Interventions]



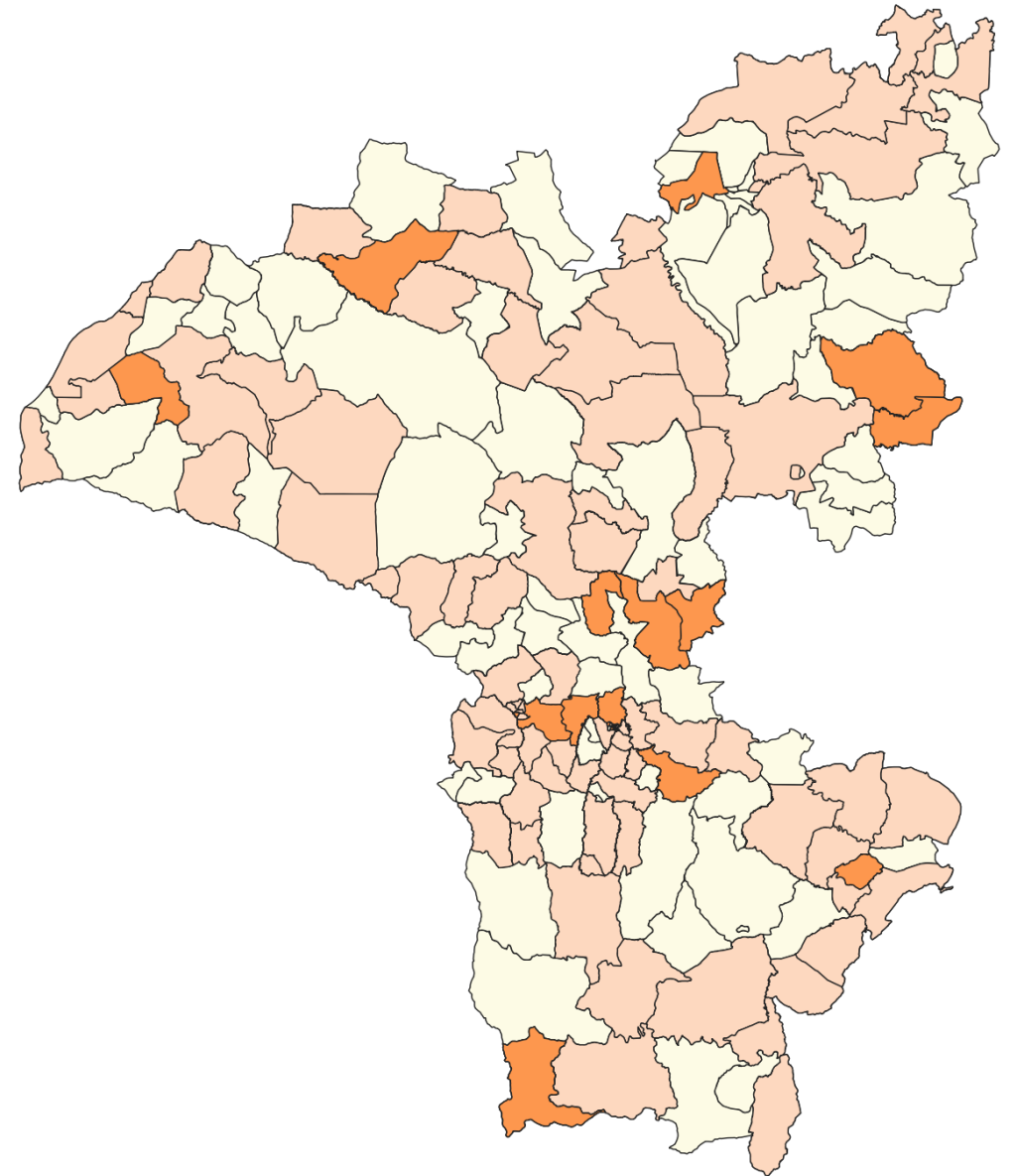
GTFCC GLOBAL ROADMAP

Multisectoral NCPs



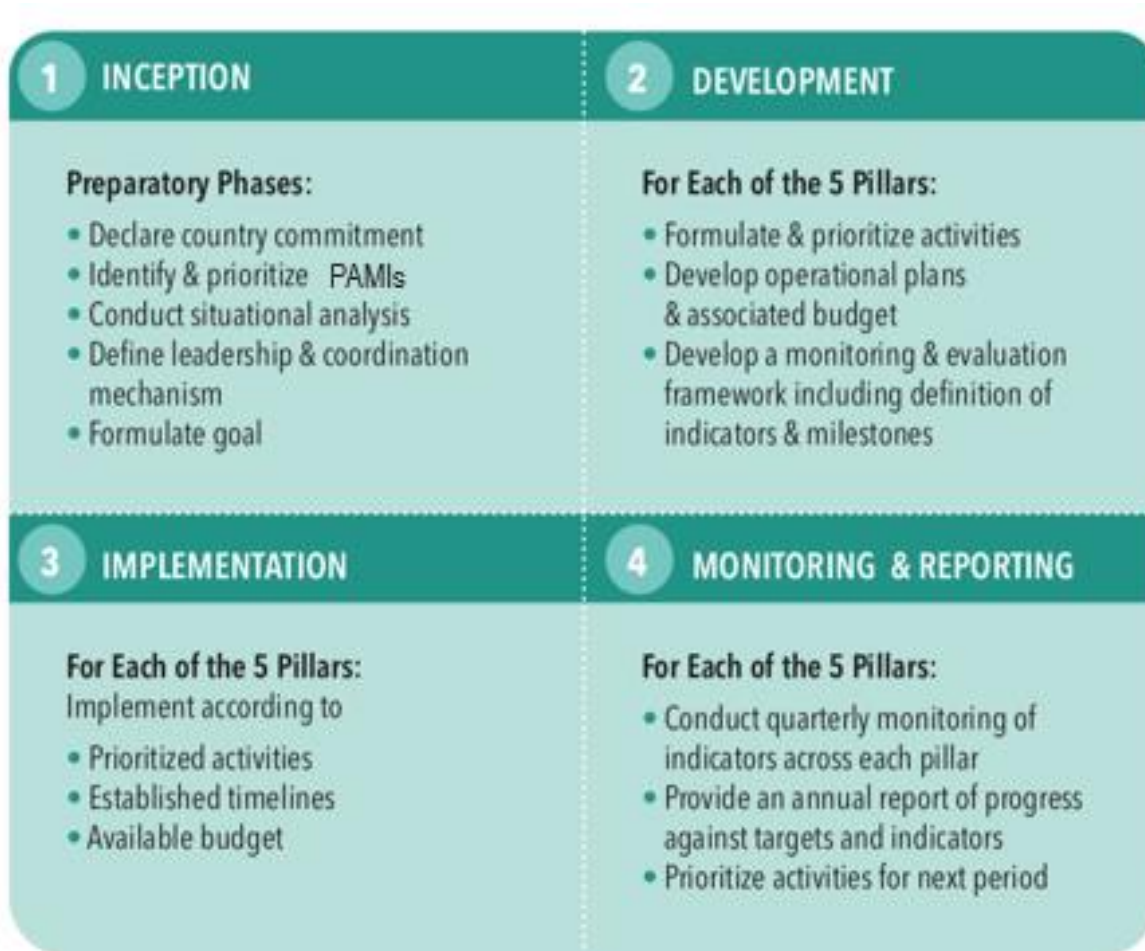
Identification of Priority Areas

- Where does it fit into the cholera control & elimination process?



NCPs

Conception and execution cycle



GLOBAL TASK FORCE ON
CHOLERA CONTROL

Interim Guiding Document to Support Countries for the Development of their

NATIONAL CHOLERA PLAN

1

INCEPTION

Preparatory Phases:

- Declare country commitment
- Identify & prioritize PAMIS
- Conduct situational analysis
- Define leadership & coordination mechanism
- Formulate goal

At the highest level
Multisectoral approach
Multi-annual
With strong M&E mechanism

Epidemiological indicators
Vulnerability factors

Mapping of stakeholders and initiatives
Pillar Capacity/gap assessment
External factors
GTFCC core indicators baseline

Elimination or Control
Timeframe and Milestones

Task force
Organisational chart

2

DEVELOPMENT

Logical Framework Analysis

Who is responsible for what, with whom, using which resources in which time frame

List of activities with indicators, targets, milestones, frequency

For Each of the 5 Pillars:

- Formulate & prioritize activities
- Develop operational plans & associated budget
- Develop a monitoring & evaluation framework including definition of indicators & milestones

Type of indicator	NCP project	Indicators
Input	<i>The project will provide:</i>	<i>% of input provided:</i>
Activity/Intervention	<i>For the project staff to do:</i>	<i>% of interventions conducted:</i>
Output	<i>As a result, this will happen:</i>	<i>% of targeted beneficiaries covered:</i>
Outcome	<i>Leading to:</i>	<i>% change in practices:</i>
Impact	<i>And contributing to a reduction in:</i>	<i>% decrease in epidemiological indicators:</i>

Who is responsible for what,
with whom, using which
resources in which time frame

3 IMPLEMENTATION

For Each of the 5 Pillars:

Implement according to

- Prioritized activities
- Established timelines
- Available budget

Strategic Objective 1: xxxxxx							
		Description	Indicator	Means of verification	Risk/ assumption	Budget	Timeline
Output 1.1							
	Activity 1.1.1						
	Activity 1.1.2						
	Activity 1.1.3						
Output 1.2							
	Activity 1.2.1						
	Activity 1.2.2						
	Activity 1.2.3						
Strategic Objective 2: xxxxxx							
		Description	Indicator	Means of verification	Risk/ assumption	Budget	Timeline
Output 2.1							
	Activity 2.1.1						
	Activity 2.1.2						
	Activity 2.1.3						
Output 2.2							
	Activity 2.2.1						
	Activity 2.2.2						
	Activity 2.2.3						

Example of NCP Implementation Progress Report Template

Strategic objective:	Reporting period:
Pillar:	Owner:
Project manager:	Project due date:
Compiled by:	Date submitted:

Summary

Item	Current status	Previous status	Summary
Project status	On time	Delayed	Comments
Scope	[Pick a value]	[Pick a value]	
Schedule	[Pick a value]	[Pick a value]	
Cost	[Pick a value]	[Pick a value]	
Risk	[Pick a value]	[Pick a value]	

Tasks

Task	Status	Objective	Planned	Actual	Progress	Deliverable
[Name of activity]	In progress	[Specify objective]	Date	Date	25%	In progress
	[Pick a value]				[Pick a value]	[Pick a value]
	[Pick a value]				[Pick a value]	[Pick a value]

Impact indicators
In-depth reviews
Other reports
Lesson learned

Annual review of plans
Revisit PAMIs
Check external factors

Activity/output monitoring

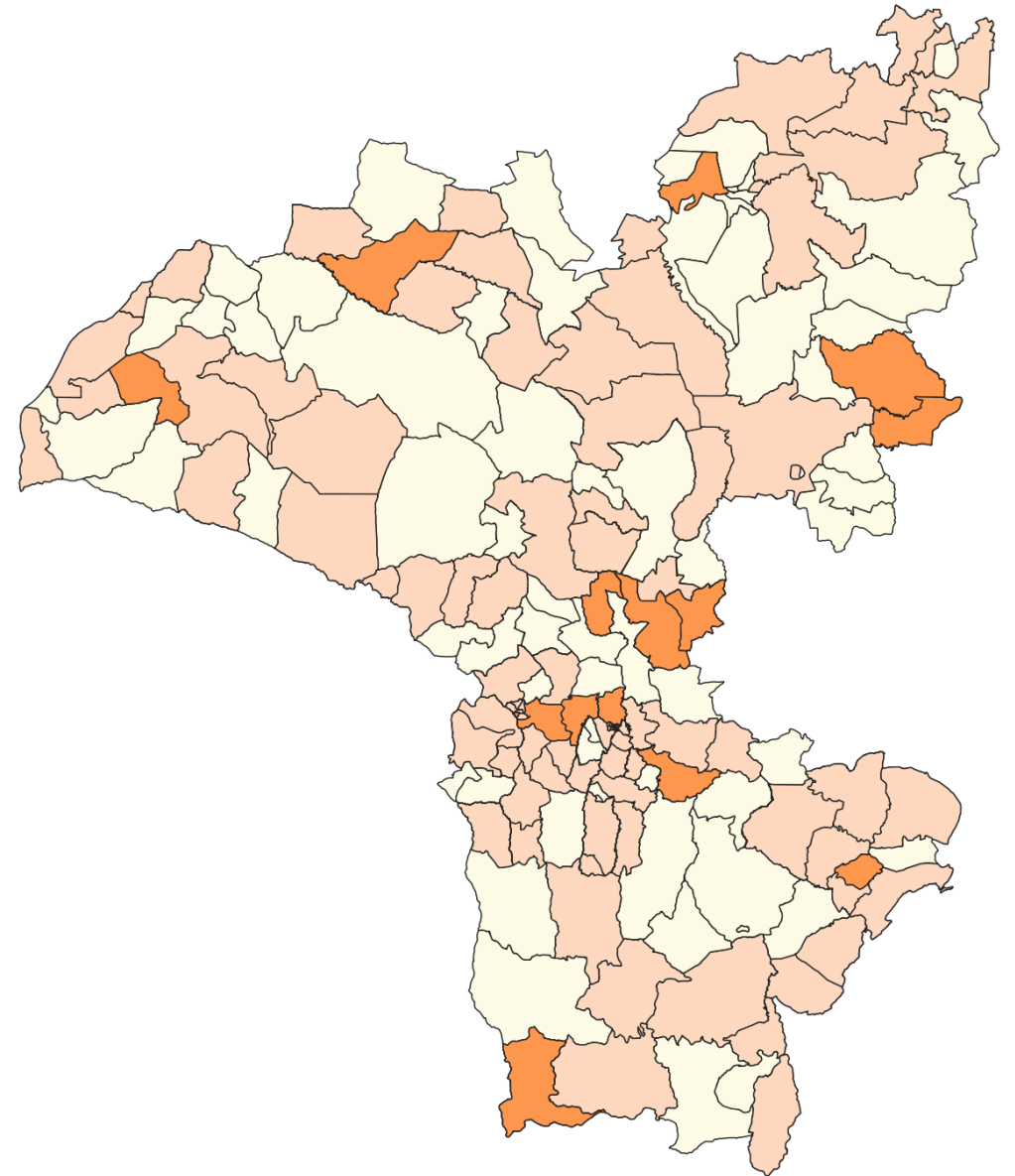
4 MONITORING & REPORTING

For Each of the 5 Pillars:

- Conduct quarterly monitoring of indicators across each pillar
- Provide an annual report of progress against targets and indicators
- Prioritize activities for next period

Identification of Priority Areas

- How are the outcomes used in practice to guide cholera control & elimination ?



ITERATIVE PRIORITIZATION STEPS

List of PAMIs

- Narrows down the list of geographic units
- Basis on which pillars prioritize activities & develop implementation plans

PAMIs may NOT

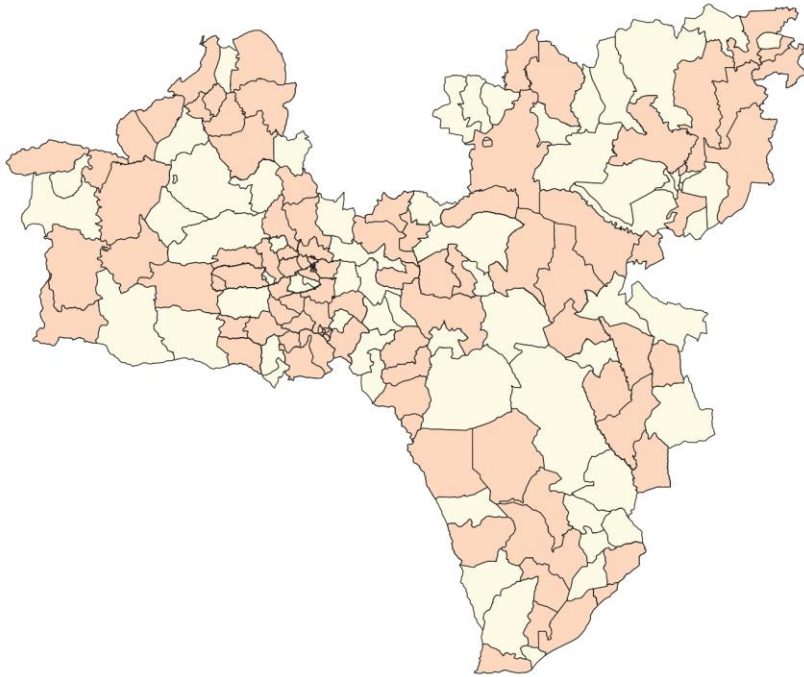
- All be prioritized for all pillars
- All receive the same package of interventions



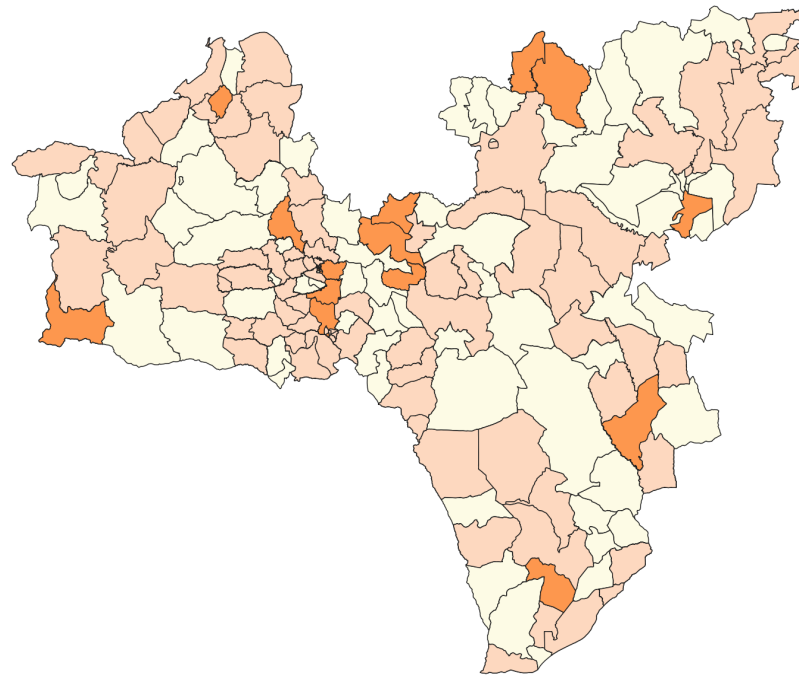
(FICTIVE) EXAMPLE

From Operational Geographic Units (OGU) to PAMIs, to priority areas for a pillar

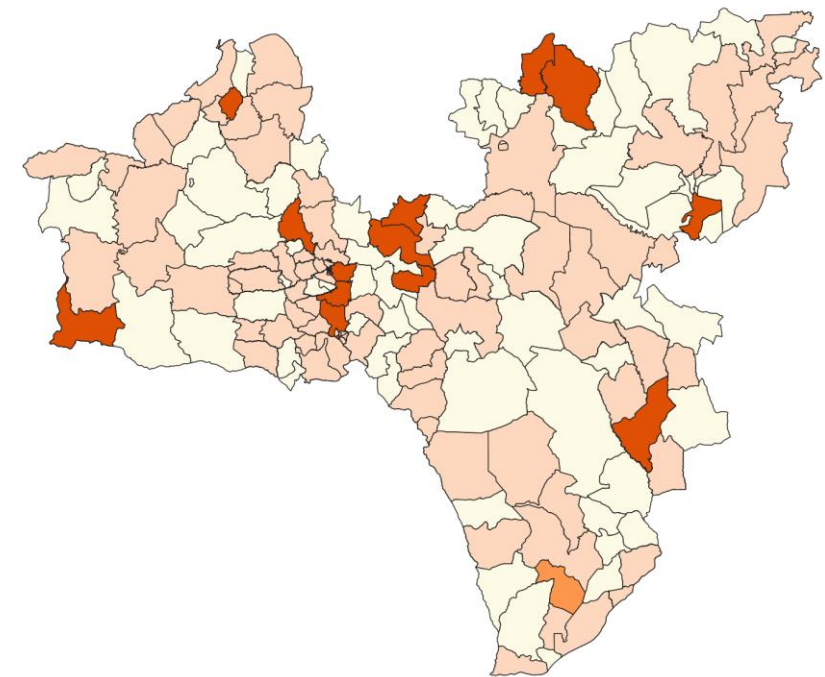
173 Zones → 104 OGU with cases



104 OGU with cases → 18 PAMIs



18 PAMIs → 15 targeted for CM



Fictitious country

Inception

Development

OGU → PAMI tool

Links

Identification of priority areas for multisectoral interventions for cholera control
 User guide PAMI Excel-based tool
 Data input template
 Training Dataset 1 (Testing representativeness acceptable)
 Training Dataset 2 (Testing representativeness suboptimal)
 Training Dataset 3 (Testing representativeness insufficient)
 @gtfccc@who.int

Overview

The tool is organized with seven sheets from left to right:

- Information** presents the tool and relevant documents.
- Data input table** corresponds to the data import sheet for input dataset prepared for the analysis according to the data template.
- R.1) Priority index calculation** provides automated calculations of indicators, scores and priority index.
- R.2) Overview tables** presents key dataset parameters, thresholds for each indicator score and an analysis of the representativeness of laboratory confirmation.
- R.3) Priority index summary** contains a pivot table with the key parameters stratified by priority index values.
- R.4) Additional factors tables** presents a pivot table for each vulnerability factor stratified by priority index value.
- R.5) Table PAMIs export** corresponds to the data of **R.1) Priority index calculation** available for data exploration (sort/filter) and can be exported for further mapping and analysis.

Instruction summary

It is recommended to always use an empty input dataset template and an empty GTFCC Excel-based tool for each new analysis.

To compute the priority index, the key steps are the following:

- Import the input dataset into the **Data input table** tab. The data should be prepared using the **input dataset - empty template.xlsx** file and copied here as **'value only'**.
- Compute automatically in **R.1) Priority index calculation** tab, the derived indicators, the testing representativeness and the priority index for all NCP operational geographic units; first select the entire first row and then drag down the selection (maintaining right click) to fill the formulas until all NCP operational geographic units of the input dataset are included in the data table. **This sheet is for calculation only** (no sort or filter features enabled).
- Consult the results and summary tables by refreshing the entire workbook by pressing **Ctrl + Alt + F5**.

Refresh the indicators and priority index values under the dashboard available to **R.1) Table PAMIs export** tab.

Data exchange format

Step 1 and 2: Gather data on mandatory operational efforts and score each PAMI

PAMI	PAMI score	Vulnerability		Risk of transmission and spread				Final selection of PAMIs for OCV campaigns					
		Historical OCV campaign?	Coverage > 95% and no significant change in population	Are there any high-risk populations living in the PAMI?	High risk population score [1-4, 0-2]	Area (sq km)	Population baseline data for 2022	Population density	Risk of importation/cross border transmission, or is the PAMI next to another endemic area?	Risk of import/cross border transmission score [1-4, 0-2]	Total score for OCV campaign	PAMI selected for OCV campaign?	
AM-01	5	Y	2	5	2	207	22 187	67.9	3	Y	4	20	Y
AM-12	1	Y	2	Y	4	107	123 867	205.1	3	Y	4	20	Y
AM-06	6	Y	4	Y	4	2 224	123 950	54.8	3	Y	2	15	Y
AM-03	6	Y	4	Y	4	1 917	149 463	37.5	2	Y	2	18	Y
AM-14	6	Y	4	Y	2	16	362 961	4 088.3	4	Y	4	18	Y
AM-13	6	Y	4	Y	4	28	79 240	4 429.7	4	Y	2	18	Y
AM-02	6	Y	2	Y	4	1 640	33 124	9.1	1	Y	4	17	Y
AM-11	6	Y	2	Y	2	16	33 544	174.1	4	Y	4	17	Y
AM-05	6	Y	2	Y	4	440	31 248	48.6	2	Y	4	16	Y
AM-04	6	Y	4	Y	2	761	13 845	28.1	1	Y	2	15	Y
AM-07	3	Y	4	Y	2	1 320	46 411	42.9	3	Y	4	14	Y
AM-02	3	Y	2	Y	4	2 761	36 199	13.1	1	Y	2	14	Y
AM-08	4	Y	2	Y	2	204	73 120	339.7	3	Y	2	13	Y
AM-09	4	Y	2	Y	4	704	20 328	25.6	1	Y	2	12	Y
AM-15	0	Y	2	Y	2	26	148 347	4 712.0	2	Y	1	10	Y

Step 3: Using the score from Step 1, develop multi-year OCV plan

PAMI	OCV prioritization score	Target population	Required doses, assumes 95% coverage	1st round		2nd round		Key operational questions			Additional comments
				Planned month	Planned year	Planned month	Planned year	Has the seasonality of cholera in the PAMI been considered as part of the planned timelines for OCV campaigns?	Are accessibility issues in the PAMI (e.g., security issues, weather patterns or conditions) been considered as part of the planned timelines for OCV campaigns?	Does the country want to consider regional implementation of the campaign?	
AM-05	19	127 812	242 843	3	2025	9	2025	Y	Y	Y	
AM-05	18	153 363	291 389	3	2023	9	2023	Y	Y	Y	
AM-13	18	179 567	346 806	9	2025	3	2026	Y	Y	Y	
AM-14	18	83 111	158 470	3	2024	9	2024	Y	Y	Y	
AM-01	17	35 763	67 389	3	2024	9	2024	Y	Y	Y	
AM-11	17	36 738	69 801	3	2023	9	2023	Y	Y	Y	
AM-03	16	32 101	61 428	3	2023	9	2023	Y	Y	Y	
AM-04	15	21 176	40 235	3	2024	9	2024	Y	Y	Y	
AM-07	15	48 548	92 392	9	2023	3	2024	Y	Y	Y	
AM-02	14	37 399	71 047	3	2023	9	2023	Y	Y	Y	
AM-08	13	40 727	79 381	3	2025	9	2025	Y	Y	Y	

PAMI → PAMI-OCV tool

PAMI → PAMI-WASH and other pillars tool (coming soon)

KEY MESSAGES

- PAMI identification is at the heart of the Global Roadmap for cholera control and elimination
- It aims to maximize public health impact and cost effectiveness
- It is a critical step in the NCP development at the inception phase
- It is the basis for the pillars to prioritize activities and develop implementation plans
- It is a dynamic process that should be updated on a regular basis

Thank you

Together we can
#endcholera



GLOBAL TASK FORCE ON
CHOLERA CONTROL