



GLOBAL TASK FORCE ON
CHOLERA CONTROL

Cholera Pandemic & Main Challenges

Philippe Barboza

Team-lead Cholera programme WHO-HQ

Head of the GTFCC Secretariat



World Health
Organization

HEALTH
EMERGENCIES
programme



2022 & 2023 overview

CHOLERA OUTBREAK / CASES BY COUNTRIES PRELIMINARY# DATA 2022/2023

31

Countries (2022/23)

20

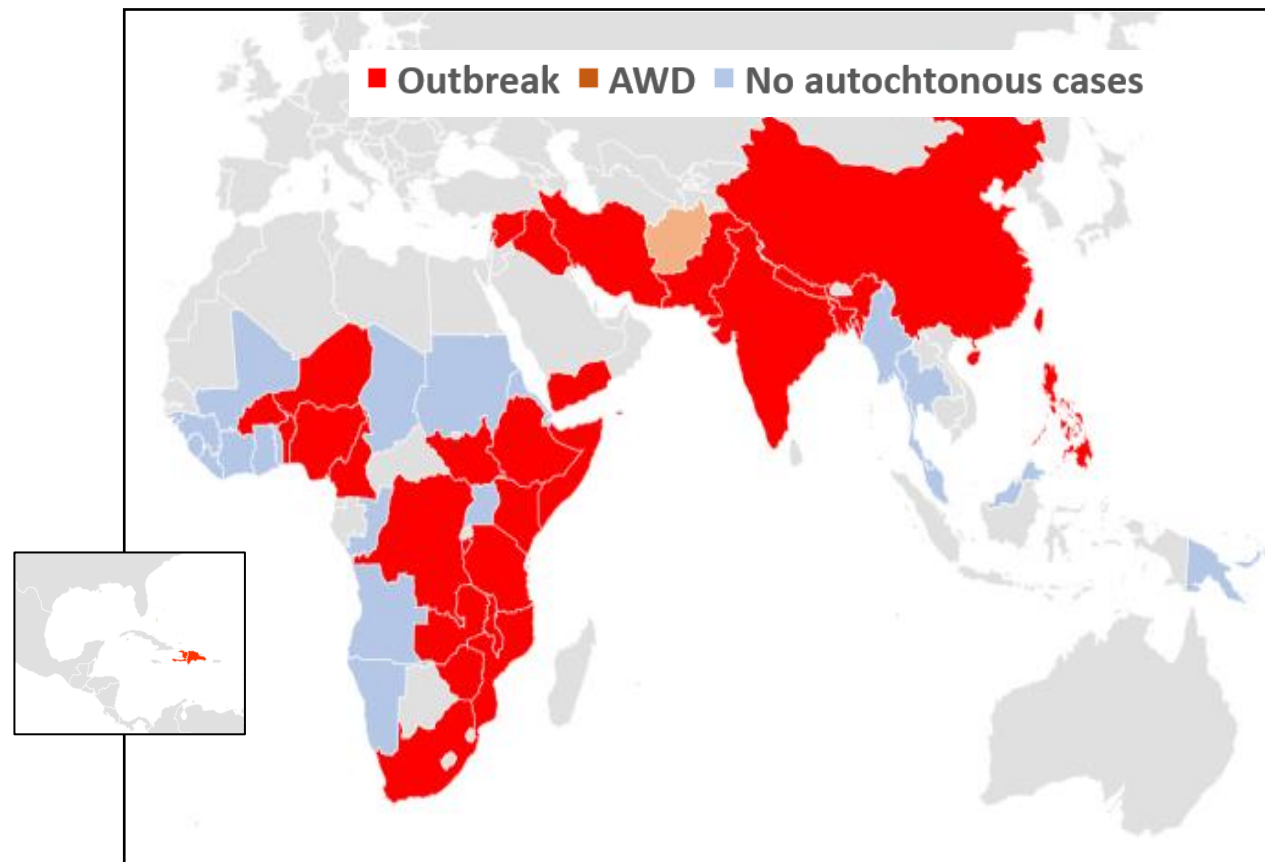
Countries at direct risk

1
BILLION

People at risk



High CFR



Source Official report and Event-Based surveillance
GTFCC list of countries (2017)



Prioritization- At this point of time

9

Acute Countries

17

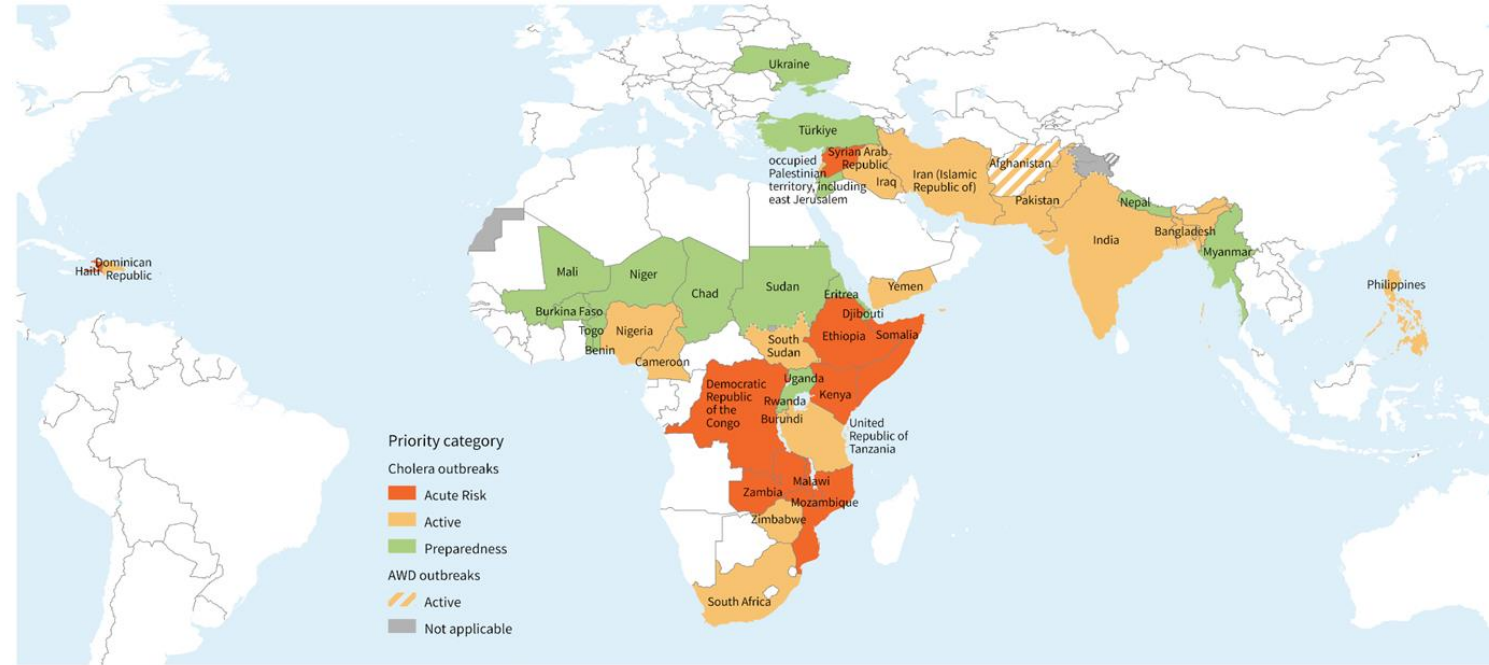
Active Countries

17

**At direct risk
Countries**



- List and prioritization regularly revised
- Seasonality – large part of work in low inter epidemic period will change in coming months



The designations employed and the presentation of the material in this publication do not imply the expression of any opinion whatsoever on the part of WHO concerning the legal status of any country, territory, city or area or of its authorities, or concerning the delimitation of its frontiers or boundaries. Dotted and dashed lines on maps represent approximate border lines for which there may not yet be full agreement.

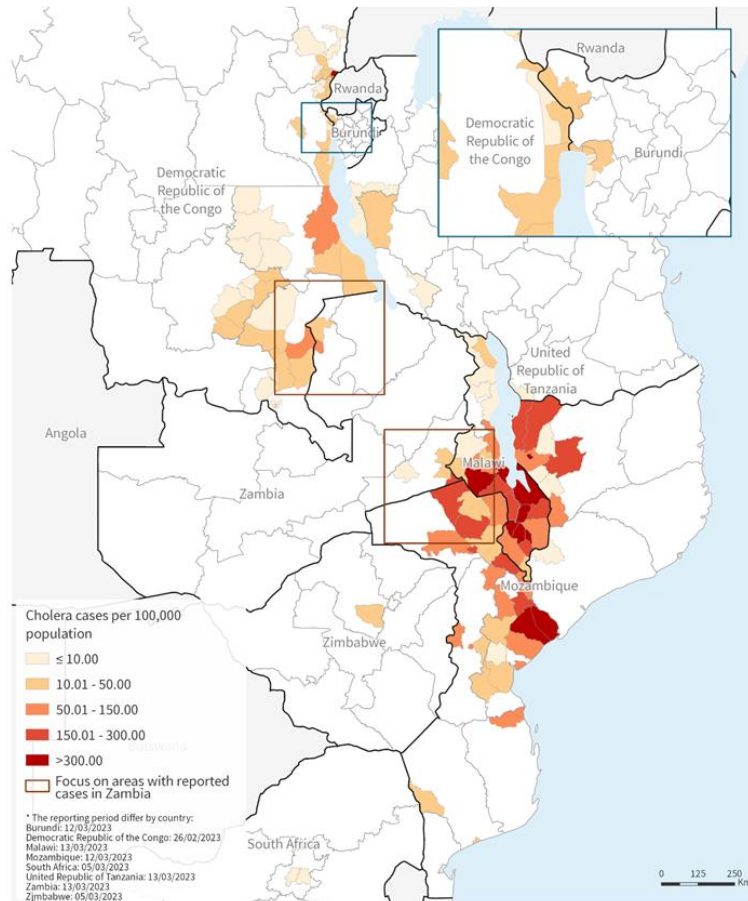
Data Source: World Health Organization
Map Production: WHO Health Emergencies Programme
Map Date: 9 March 2023



Most active East and Southern Africa

Current

Cholera cases per 100,000 population reported in 2023
(as of 13/03/2023*)



The designations employed and the presentation of the material in this publication do not imply the expression of any opinion whatsoever on the part of WHO concerning the legal status of any country, territory, city or area or of its authorities, or concerning the delimitation of its frontiers or boundaries. Dotted and dashed lines on maps represent approximate border lines for which there may not yet be full agreement.

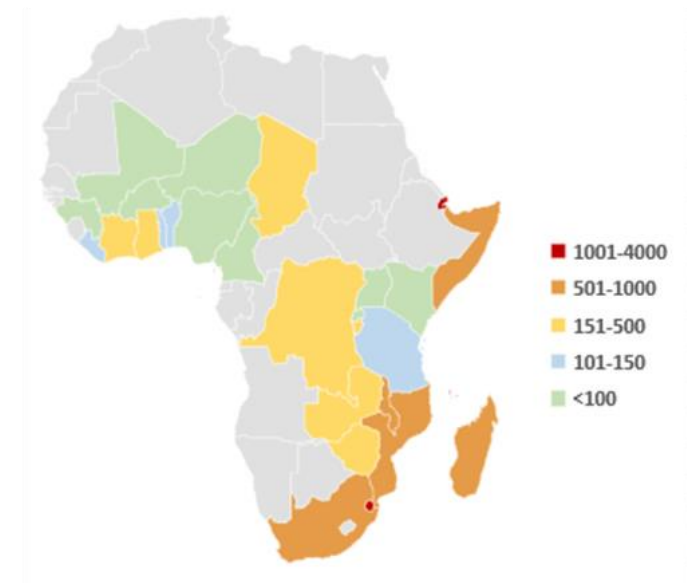
Data Source: World Health Organization, Ministries of Health and Statistics offices of Burundi, Democratic Republic of the Congo, Malawi, Mozambique, South Africa, United Republic of Tanzania, Zambia and Zimbabwe
Map Production: WHO Health Emergencies Programme
Map Date: 15 March 2023



- 1999-2001: Large outbreaks linked to La Niña
- **3rd Consecutive La Niña into 2023** → Increase probability of cyclones & longer more severe drought and floods

➔ **High regional risk of spread**

Average cholera Reported cholera incidence (per million) 1999-2001





CHOLERA COMODITIES SHORTAGE (2022)



Oral Cholera Vaccine (OCV)

- Global shortage
- ICG Temporary suspension of 2 doses strategy (Oct 2022)

35
MILLION

Doses Produced/
shipped (2022)

48
MILLION

Doses **GAP** (2022)



Global shortage cholera commodities

- Intravenous fluids, Oral rehydration salts, Lab. etc
- Shortage Cholera Kits → Bulk delivery

\$10
MILLION

Cholera supply

46

To Countries



Multi-partners coordination and global Forecasting needs ongoing

CHOLERA CAN BE CONTROLLED



- **Reducing CFR highest priority**
- **All cholera deaths can be prevented with available tools**
- **Treatment easy and cheap issue is timely access**



- **WASH, WASH, WASH +**
 - Urgent need **response** current outbreak (lack OCV)
 - Urgent investment needed **TO PREVENT** outbreaks



- Demand keep on increasing cholera commodities address supply challenge
- Multiplication outbreak seriously reduce capacities to provide support



- Multisectoral **control strategy exists** issue is resources for its implementation
- Strengthen Surveillance including lab to better target interventions and prioritization of available resources
- Case management, community engagement