



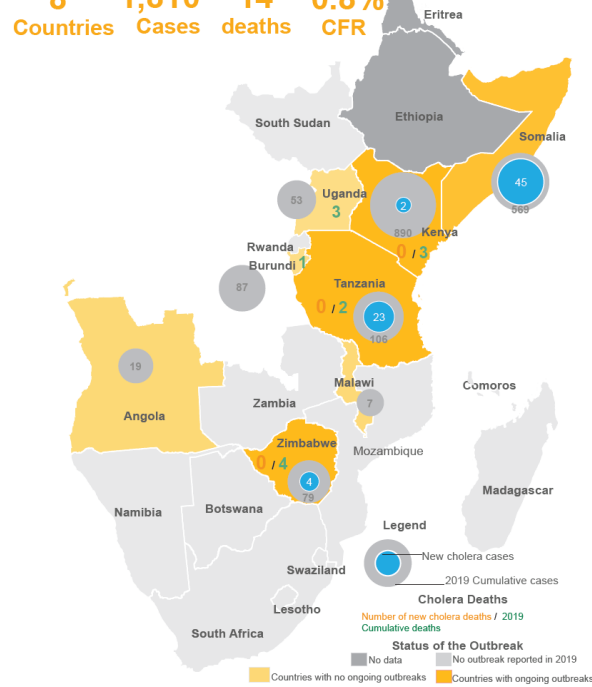
GLOBAL TASK FORCE ON
CHOLERA CONTROL

GLOBAL CHOLERA DATABASE

Elizabeth Lee, JHU
21 April 2022

DATA COME IN MANY SHAPES AND SIZES

8 Countries 1,810 Cases 14 deaths 0.8% CFR



Sources: Ministries of Health and WHO



Published Date: 2019-05-09 12:55:05
 Subject: PRO/EDR> Cholera, diarrhea & dysentery update (12): Africa, Asia
 Archive Number: 20190509.6460944

CHOLERA, DIARRHEA AND DYSENTERY UPDATE (12): AFRICA, ASIA

A ProMED-mail post
<http://www.promedmail.org>
 ProMED-mail is a program of the International Society for Infectious Diseases
<http://www.isid.org>

In this update:
 Africa

- [1] Cholera - Somalia: WHO
- [2] Cholera - Zimbabwe
- [3] Cholera - Mozambique (northern)
- [4] Cholera - Kenya (Mandera County)
- [5] Cholera - Kenya (Embu County)
- Asia
- [6] Cholera - Nepal (Kathmandu)

 Africa

 [1] Cholera - Somalia: WHO
 Date: Tue 7 May 2019
 Source: WHO Emergencies preparedness, response, Disease Outbreak News (DONs) [edited]
<http://www.emro.who.int/pandemic-epidemic-diseases/cholera/outbreak-update-cholera-in-somalia-28-april-2019.html>

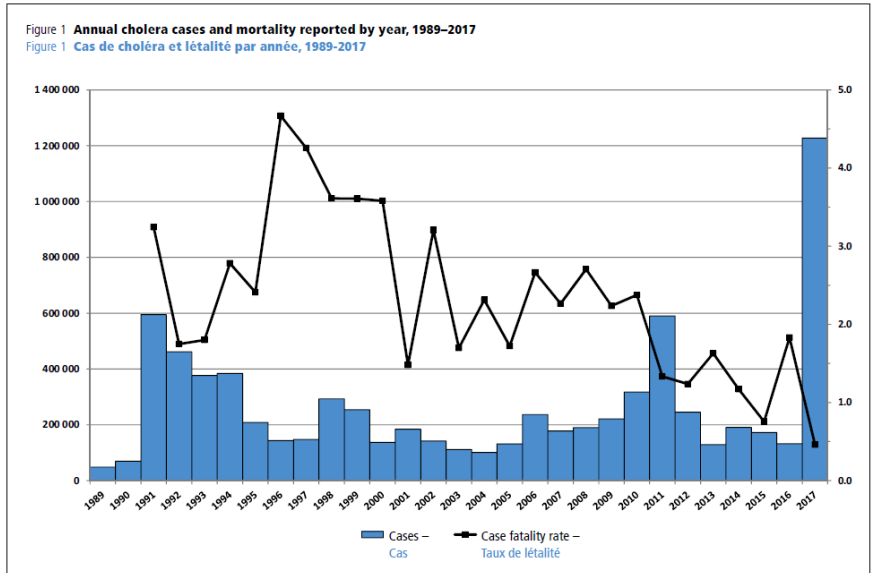
Outbreak update - Cholera in Somalia, 28 Apr 2019

The Ministry of Health (MoH) of Somalia has announced 36 new suspected cases of cholera, with no deaths, for epidemiological weeks 1 and 7 due to closure of the main cholera treatment center, from which data is collected the beginning of this outbreak in December 2017.

During the reporting period, cases occurred in 11 out of 17 districts in Banadir region, the worst affected district are Hodan (728) the cases (24) are children below 5 years of age.

WHO, MoH, and partners have contained the cholera outbreak in the districts of Jubaland, Hirshabelle, and South West states following (OCV) campaigns and other health interventions. However, active transmission is ongoing in 11 districts in Banadir -- Darkenly, D Bondere, Kahda, Kaaran, Waberi, and Warta nabada).

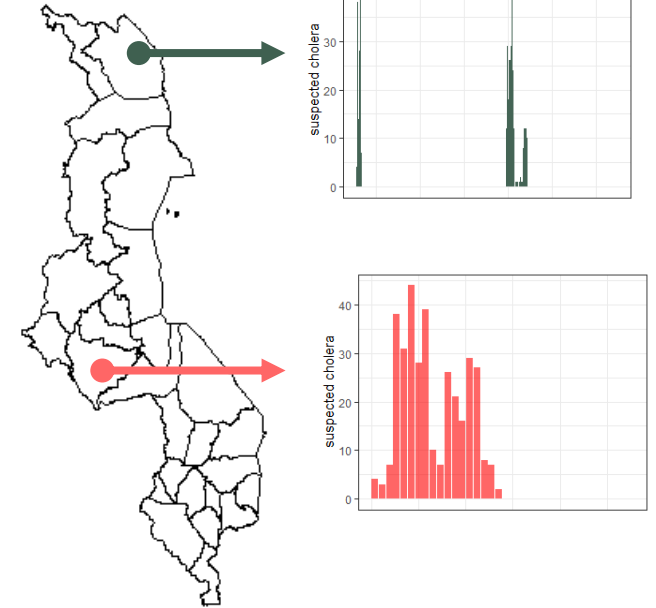
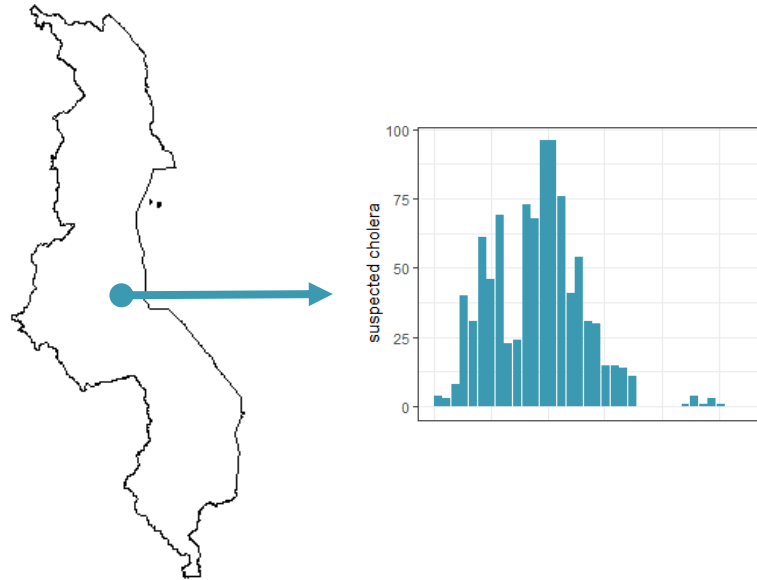
Region – Région	Country – Pays	Total no. of cases, including imported cases/deaths – Nombre total de cas (incluant cas importés et décès)	Imported cases – Cas importés	Deaths – Décès	Case fatality rate (%)* – Taux de létalité (%)*
Africa – Afrique	Angola	828		43	5.2
	Benin – Bénin	11		0	0.0
	Burundi	399		0	0.0
	Chad – Tchad	1 266		86	6.8
	Democratic Republic of the Congo – République Démocratique du Congo	56 190		1 190	2.2
	Kenya	4 288		82	1.9
	Malawi	344		5	1.4



	A	B	C	D	E
1	Country	Week 1		Week 2	
2		Cases	Deaths	Cases	Deaths
3	Mozambique	0	0	0	0
4	Kenya			115	2
5	Somalia	87	0	87	0

DATA ARE LINKED TO LOCATIONS AND TIME PERIODS

Locations

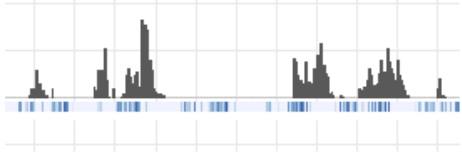


Time Periods

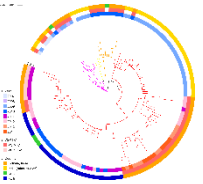


ROLE OF THE DATABASE

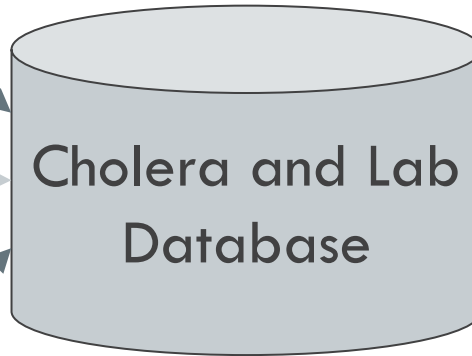
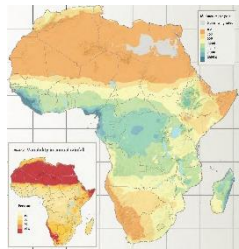
incidence data



serological and molecular data



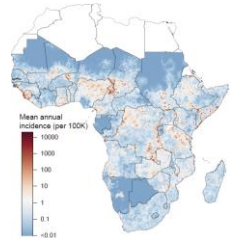
risk factors



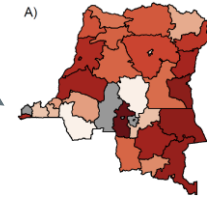
dashboards



maps



burden projections



impact of control

