



GLOBAL TASK FORCE ON
CHOLERA CONTROL

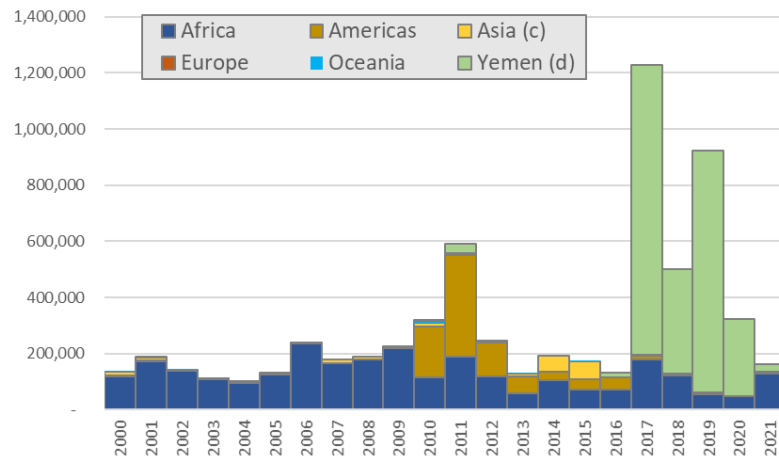
Use of OCV in 2021

Malika Bouhenia, OCV focal point
6 December 2021
OCV WG meeting 2021



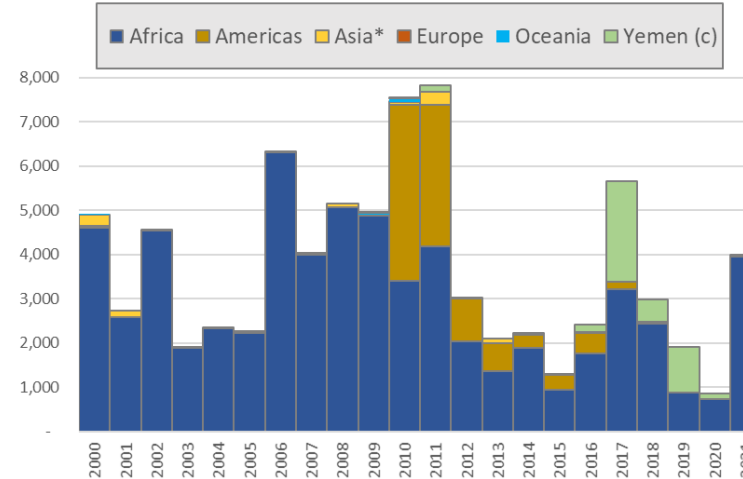
2021 outbreaks, preliminary data

Cholera **cases** reported to WHO (WER) by continent
2000-2020 & preliminary data 2021 ^{a,b}



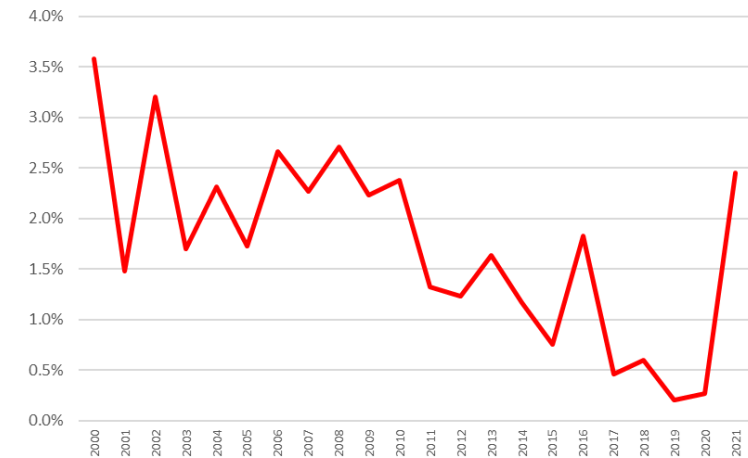
^a As of 1st Dec 2021; Non-exhaustive data, based on preliminary data available from 27 countries
^b Asia excluding Yemen
^c For Yemen data available only as of week 17 (2021)

Cholera **deaths** reported to WHO (WER) by continent,
2000-2020 & preliminary data 2021 ^{a,b,c}



^a As of 1st Dec 2021; Non-exhaustive data, based on preliminary data available from 27 countries
^b Asian excluding Yemen
^c For Yemen data available only as of week 17 (2021)

Global Cholera **CFR** 2000-2020 (WER) & preliminary
data 2021 ^{a,b,c}



^a As of 1st Dec 2021; Non-exhaustive data, based on preliminary data available from 27 countries
^b Asian excluding Yemen
^c For Yemen data available only as of week 17 (2021)

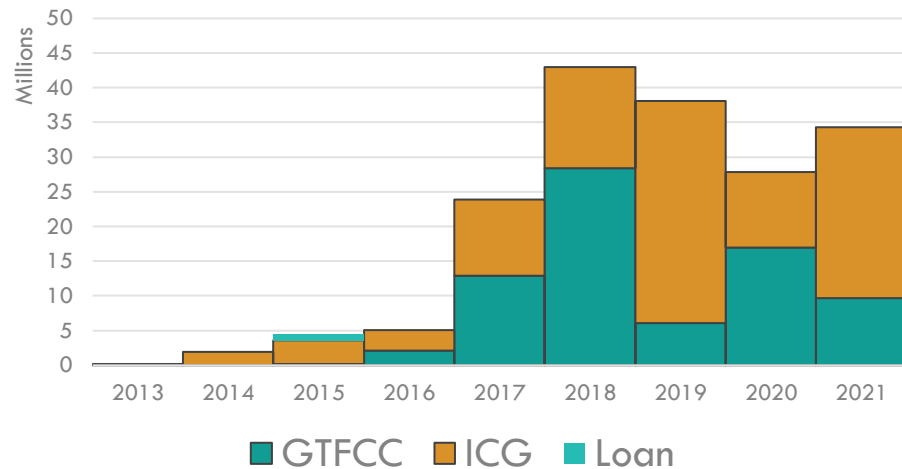
- **2017** → launch of the Roadmap
 - 179,000 cases in Africa
 - 3,500 cases in Asia (Yemen excluded)
 - 3,900 cases in the Americas
- **2021** → (Covid era) to date :
 - ~130,000 cases in Africa (160,000 overall)
 - 6,400 cases in Asia (Yemen excluded)
 - 0 cases in the Americas

- **More deaths (4,000) already reported in 2021 than in 2017 (Yemen excluded)**
- Preliminary data
- Similar number of deaths last reported in **2011**

- **2021 preliminary CFR**
 - Global CFR 2.5%
 - Africa CFR 3.1%
- **Multiple factors**
 - Size of the outbreaks
 - Conflict humanitarian crisis
 - Accessibility of health care
 - COVID

OVERVIEW OF DOSES REQUESTED

Requested doses per year



178M

35M

Doses Requested since 2013

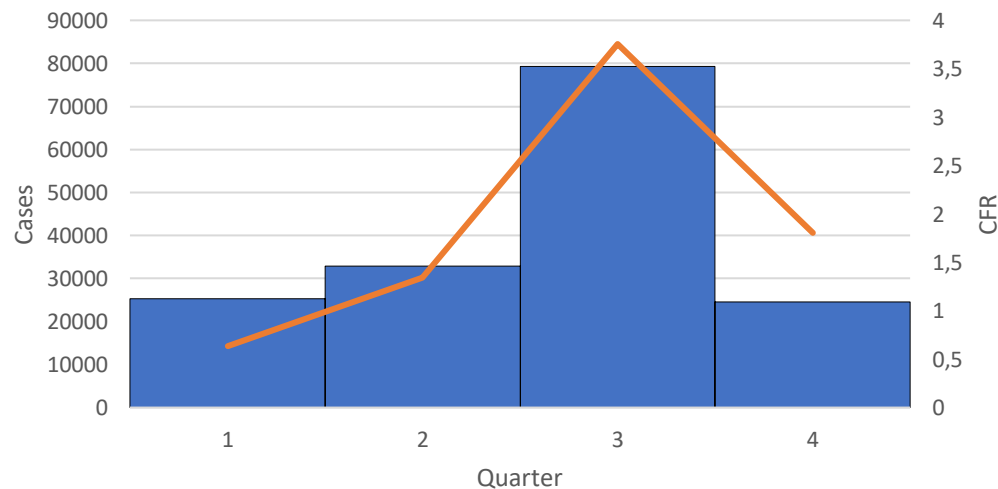
GTFCC: 42%

In 2021: 10 requests

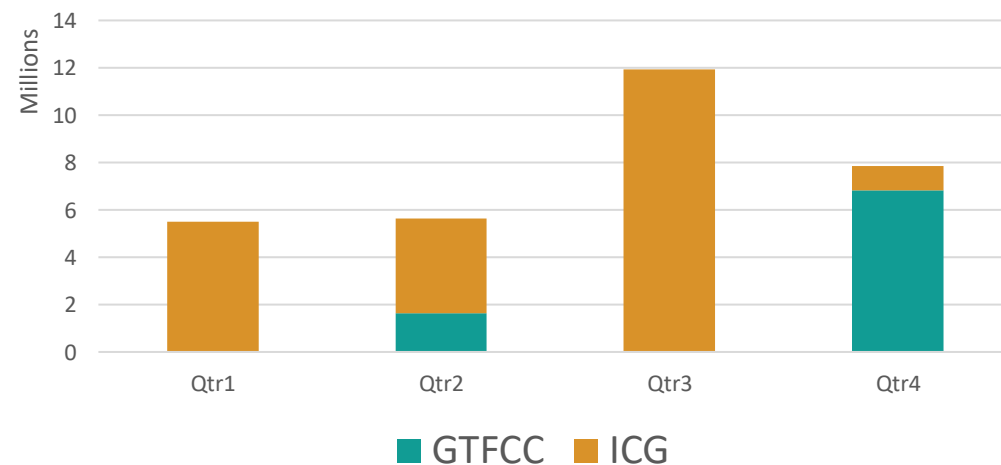
GTFCC: 2 requests, Yemen, Ethiopia (9.7 M).

ICG: Bangladesh, Ethiopia (3), Nepal, Niger, Nigeria (2).

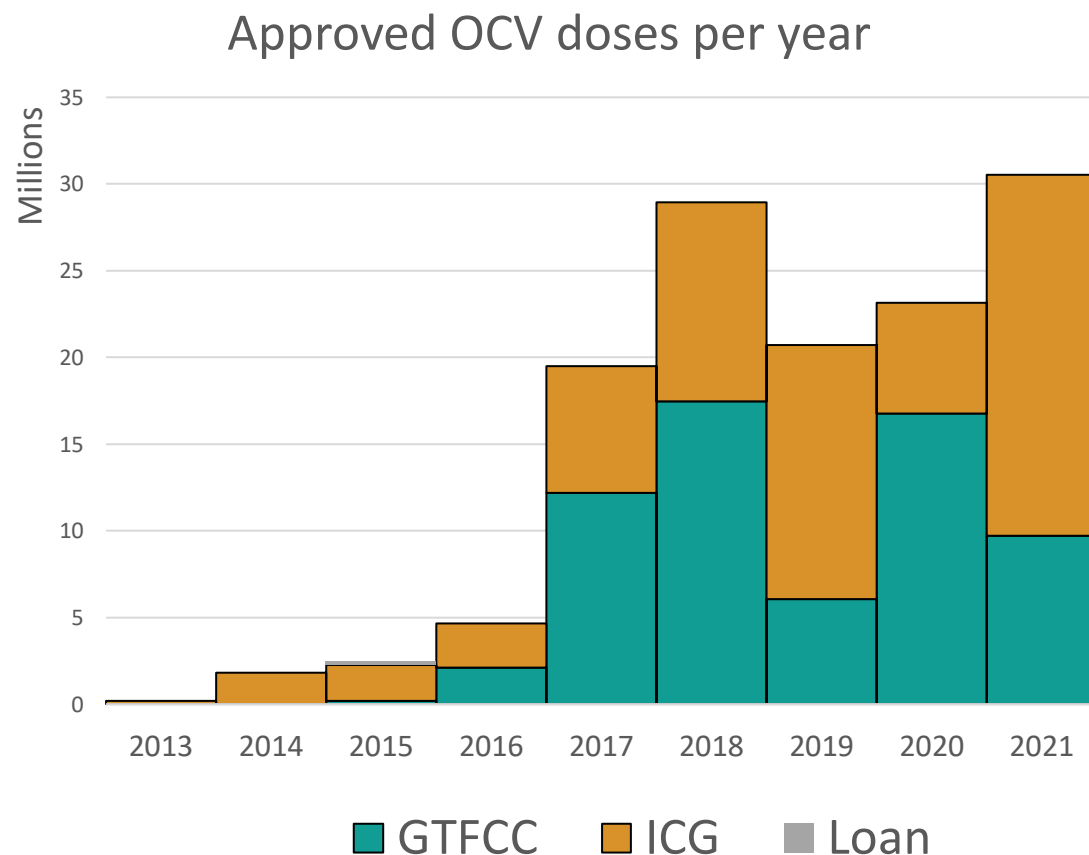
Reported cholera cases and CFR in 2021



Requested doses per mechanism in 2021



OVERVIEW OF DOSES APPROVED



132M

Doses approved since 2013

GTFCC: 65M

ICG: 67m

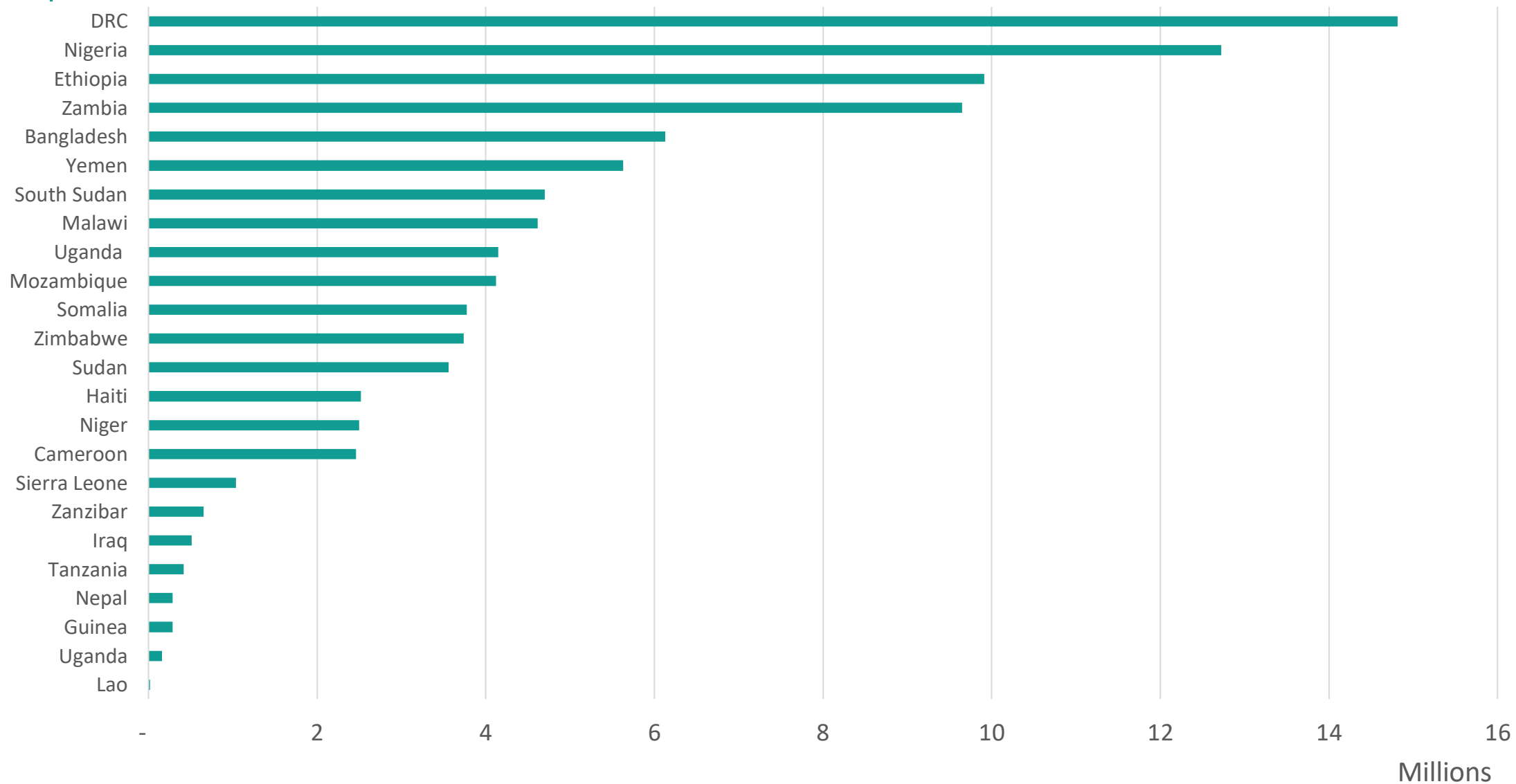
30M

Doses approved in 2021

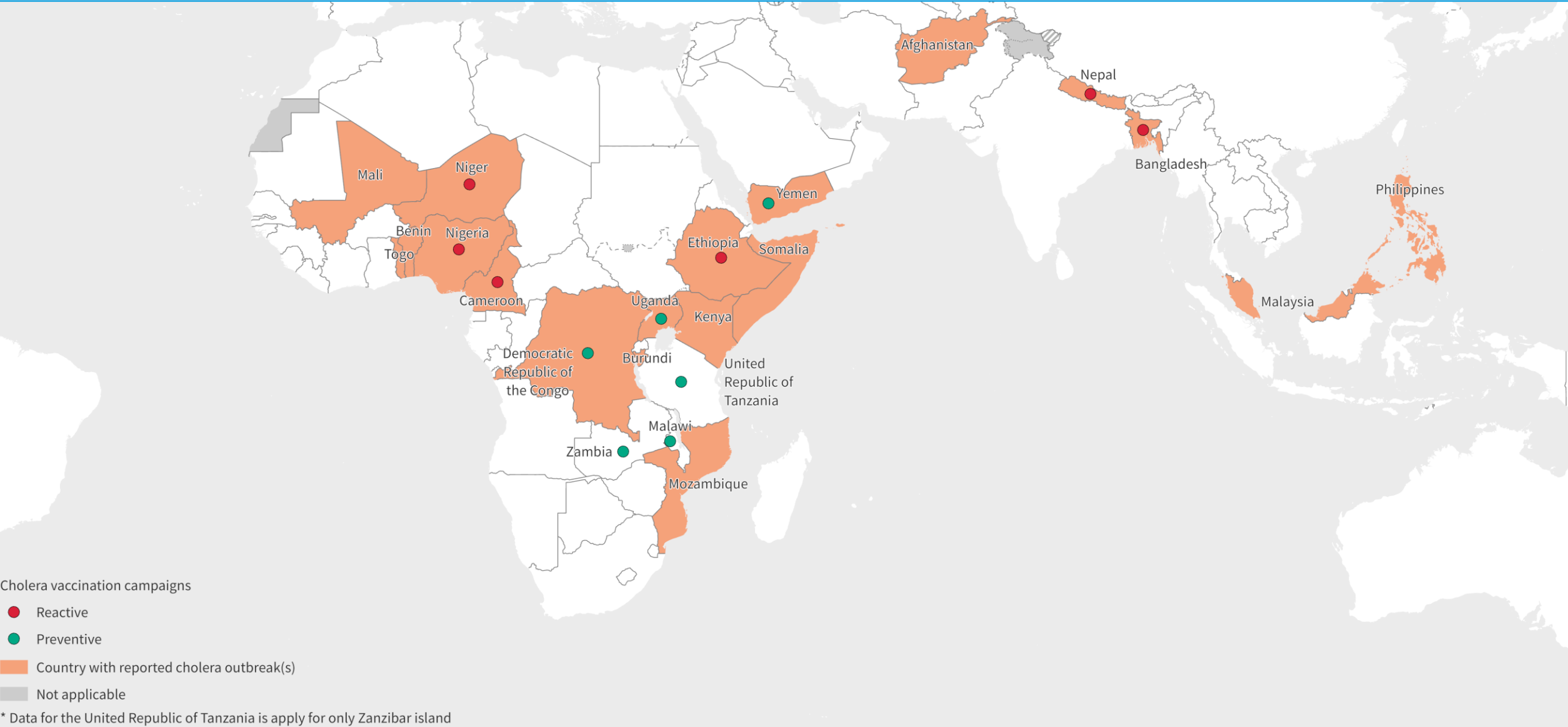
GTFCC: 8.4M

ICG: 22.4M

DOSES SHIPPED BY COUNTRY SINCE 2013



Countries reporting cases in 2021 and vaccination campaigns



The designations employed and the presentation of the material in this publication do not imply the expression of any opinion whatsoever on the part of WHO concerning the legal status of any country, territory, city or area or of its authorities, or concerning the delimitation of its frontiers or boundaries. Dotted and dashed lines on maps represent approximate border lines for which there may not yet be full agreement.

Data Source: World Health Organization
Map Production: WHO Health Emergencies Programme
Request ID: RITM00058

KEY ISSUES

Impact of SARS-CoV-2

- Challenges related to travel restrictions and reprioritization of staff towards COVID19 response
- Global community continue to reinforce the message that the roadmap should prevent cholera.
- COVID campaigns.

Improving OCV application and implementation

- Quality of requests are improving but still challenging – what can we do to improve the situation?
- Late submissions and implementations
- Quality of campaigns need better monitoring.
- Impact of campaigns

Balancing supply and demand

- Q3 (emergency requests) – stockpile size
- Countries on alert/ countries requesting preventive campaigns

NEXT STEPS



PREVENTIVE REQUESTS
ENCOURAGING
COLLABORATION
FROM DIFFERENT
SECTORS.



FUNDS DEPLOYMENT
STAFF



TRAININGS
PROJECT IN PROGRESS



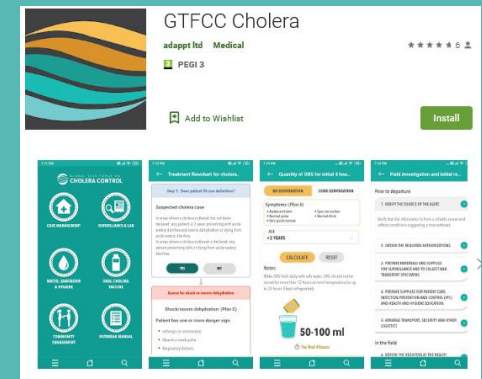
IMPROVE QUALITY OF
REQUESTS: IN
PROGRESS



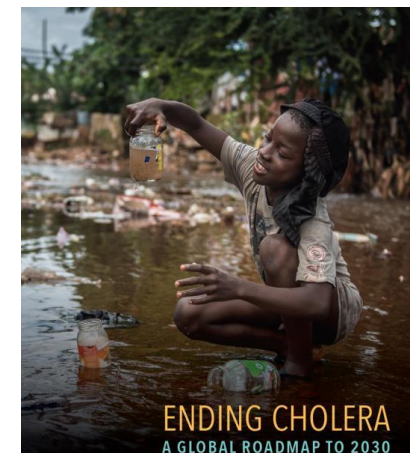
IMPROVE TIME
IMPLEMENTATION OF
CAMPAIGN AND
REPORTING

THANK YOU!

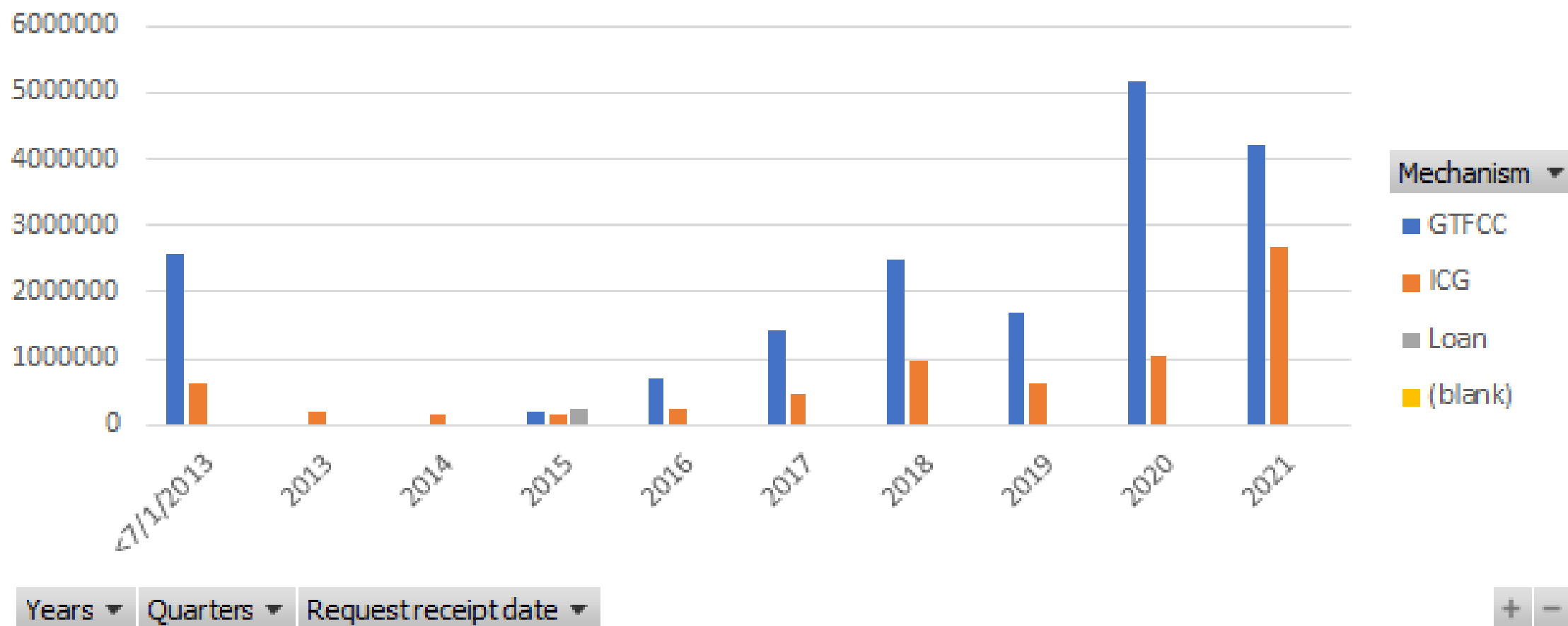
GTFCCSecretariat@who.int

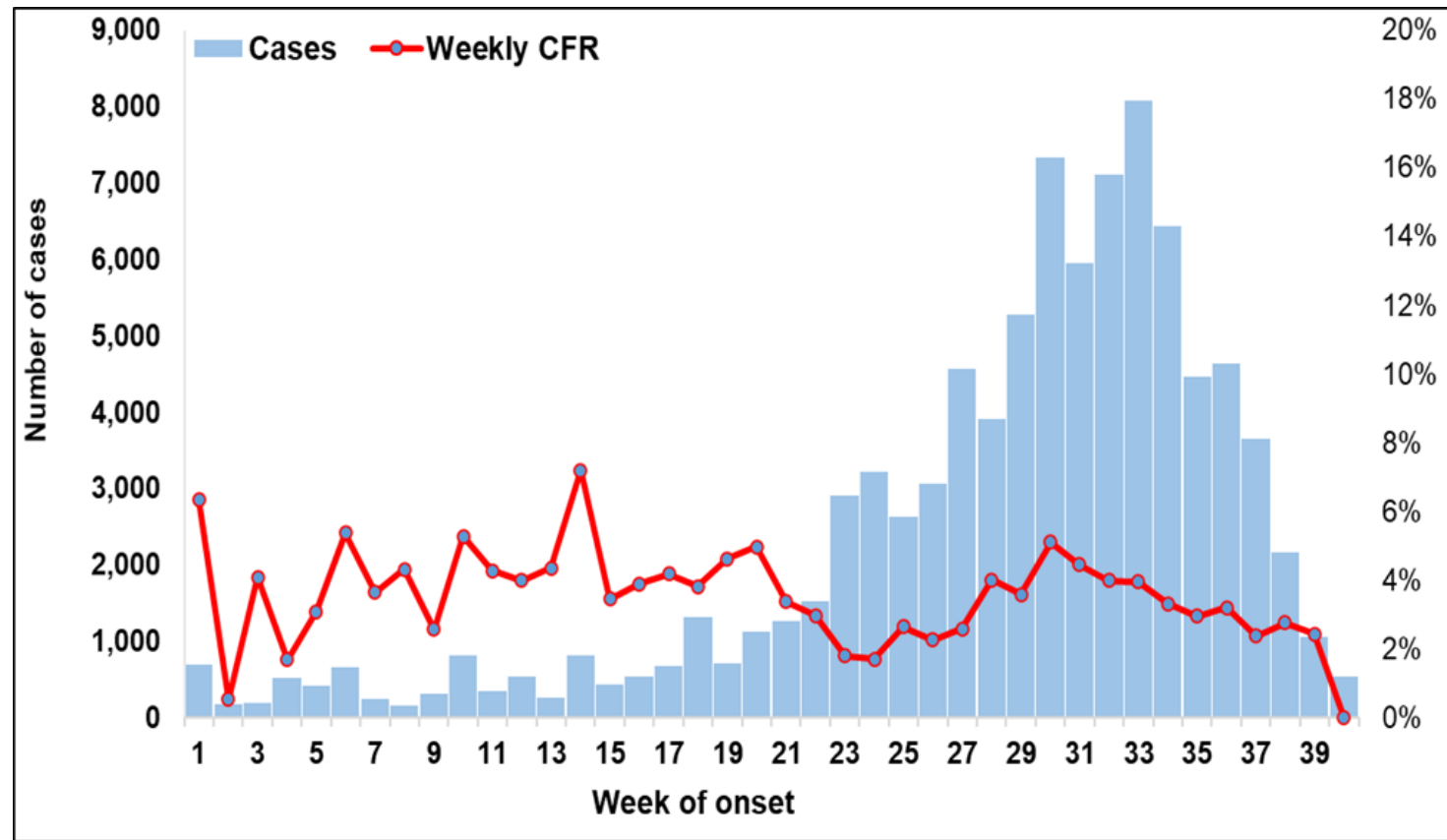


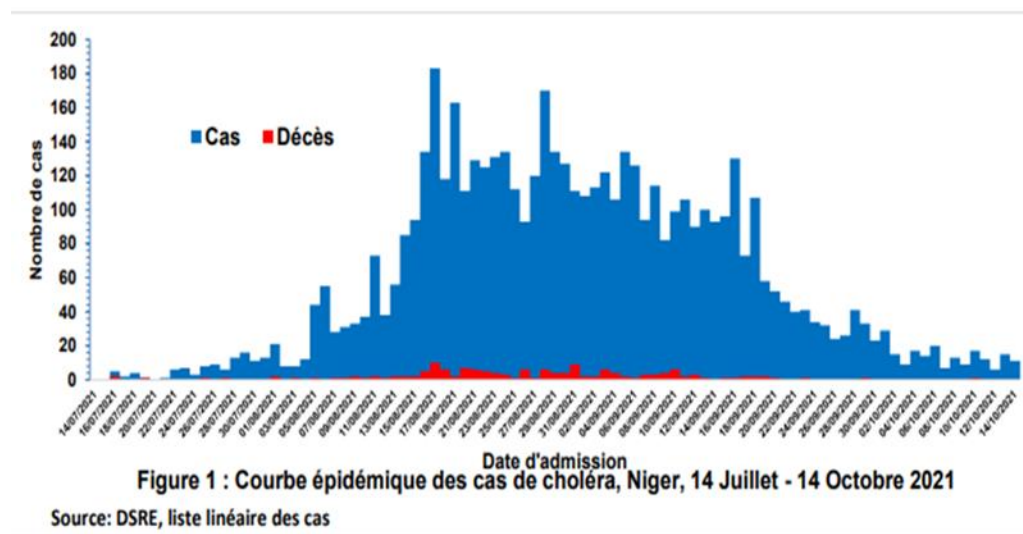
#EndCholera



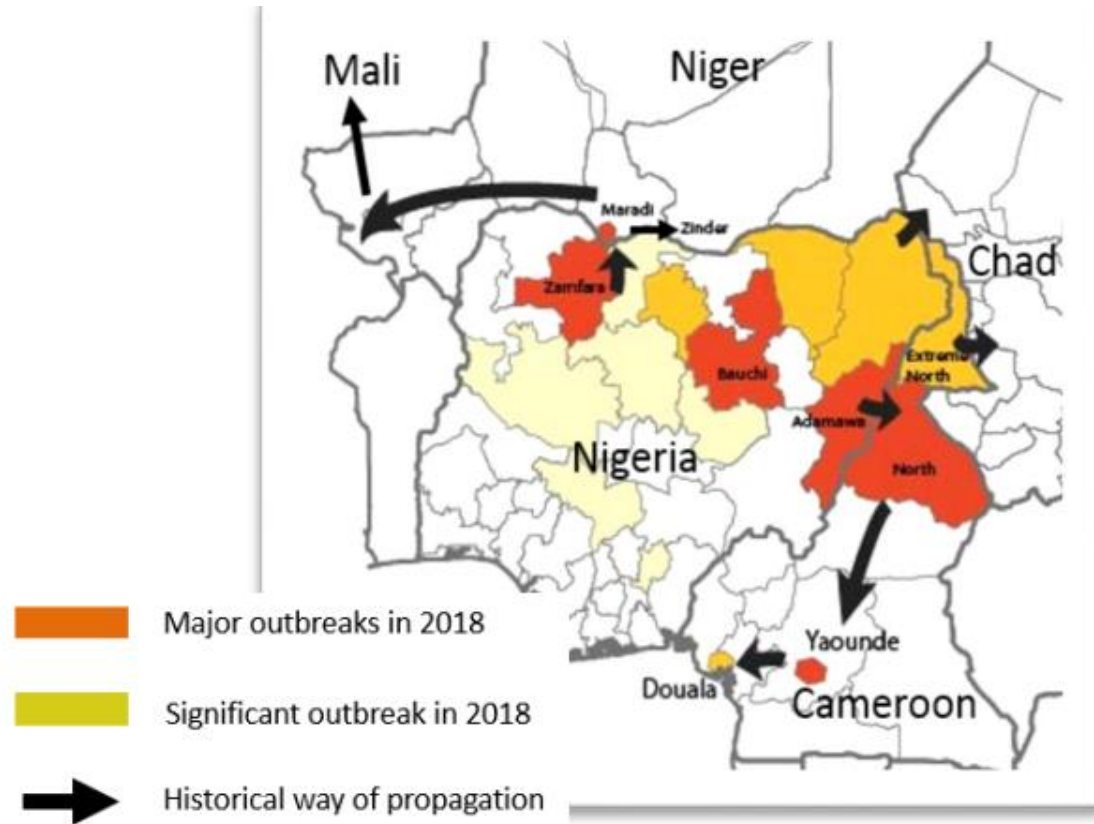
Average of Doses approved







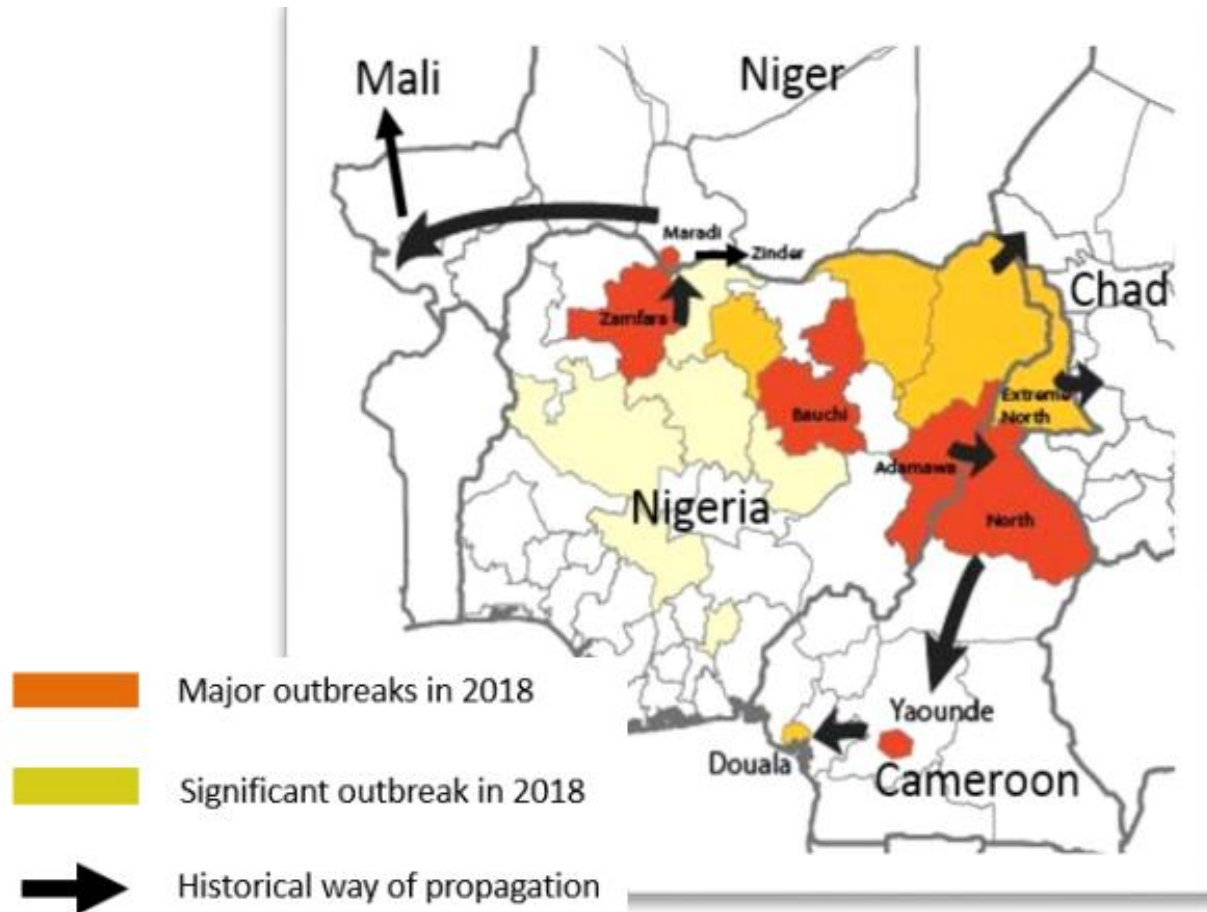
Geographical and historical trends



Map : Lake Chad basin countries affected by cholera in 2018



Context: Geography & Historical Trends



Map : Lake Chad basin countries affected by cholera in 2018

- Cholera arrived in 1970, with regular outbreaks in the region since
- Major cross-country outbreaks in 2010/11, 2014/15, 2017/18, and now in 2021
- Cholera is cyclical and outbreaks often erupt every 3-4 years in endemic areas
- >5m people live in outbreak-prone areas in Cameroon, Niger and Nigeria