



GTFCC COUNTRY SUPPORT PLATFORM (CSP)

BACKGROUND

The [Global Task Force on Cholera Control \(GTFCC\)](#) is a partnership of more than 50 institutions, including NGOs, academic institutions, and UN agencies, with a secretariat hosted by the World Health Organization (WHO). The GTFCC brings together groups working across multiple sectors to support countries in the implementation of the global cholera prevention strategy, *Ending Cholera: A Global Roadmap to 2030*, which targets a 90% reduction in cholera deaths globally and cholera elimination in 20 countries by 2030.

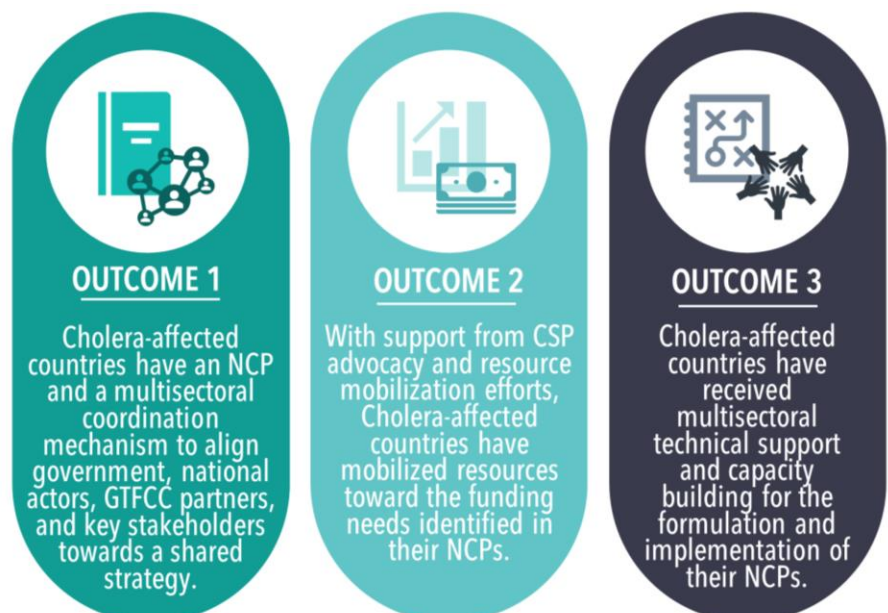
Cholera-affected countries have called for additional technical support from the GTFCC in the development and implementation of their **National Cholera Plans (NCPs)**. In response to countries' needs, the GTFCC is establishing a Country Support Platform that will support efforts – primarily at national level – to control and eliminate cholera.

The **International Federation of the Red Cross and Red Crescent Societies (IFRC)** is hosting the country support platform.

OBJECTIVES

The CSP is providing multisectoral operational support as well as advocacy, coordination, and policy guidance necessary for countries to develop, fund, implement and monitor their NCPs effectively, ensuring consistency and alignment with the Global Roadmap.

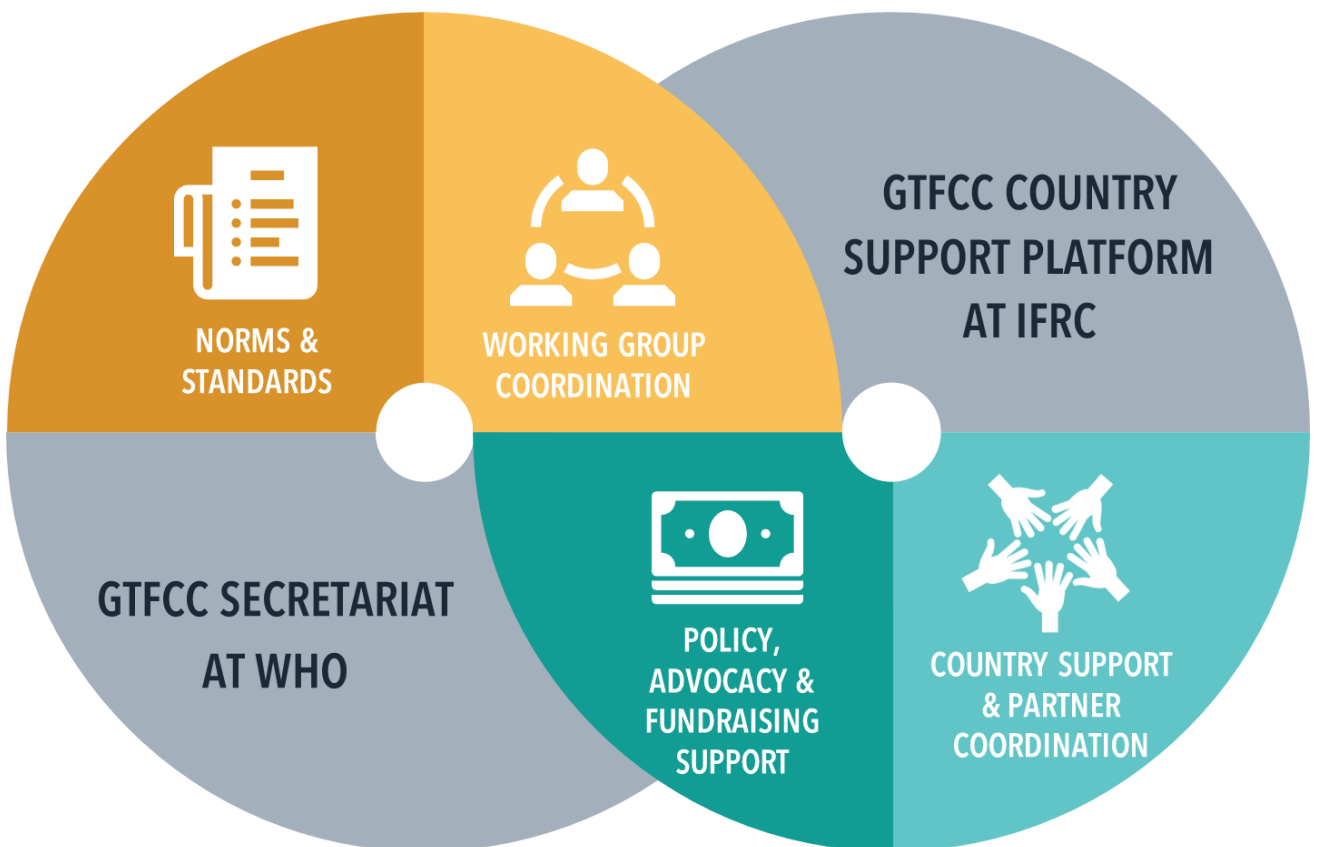
During the coming years, the CSP will strive to achieve the following outcomes:



FUNCTION

The CSP is an **integral part of the GTFCC** structure with the flexibility and resources to provide countries with multi-sectorial support. The CSP and the Secretariat are working as “one GTFCC” in close cooperation. The mission of the CSP is country support. As such, the majority of CSP staff are located in country.

- **Support at global level** is including technical expertise from GTFCC partners including coordination of a pool of experts for short- or medium-term deployments based on needs expressed by countries, as well as advocacy and fundraising expertise.
- **Support at country level** is including CSP program managers working closely with countries to develop their national cholera control programmes.



MILESTONES FOR THE NEXT 3 YEARS



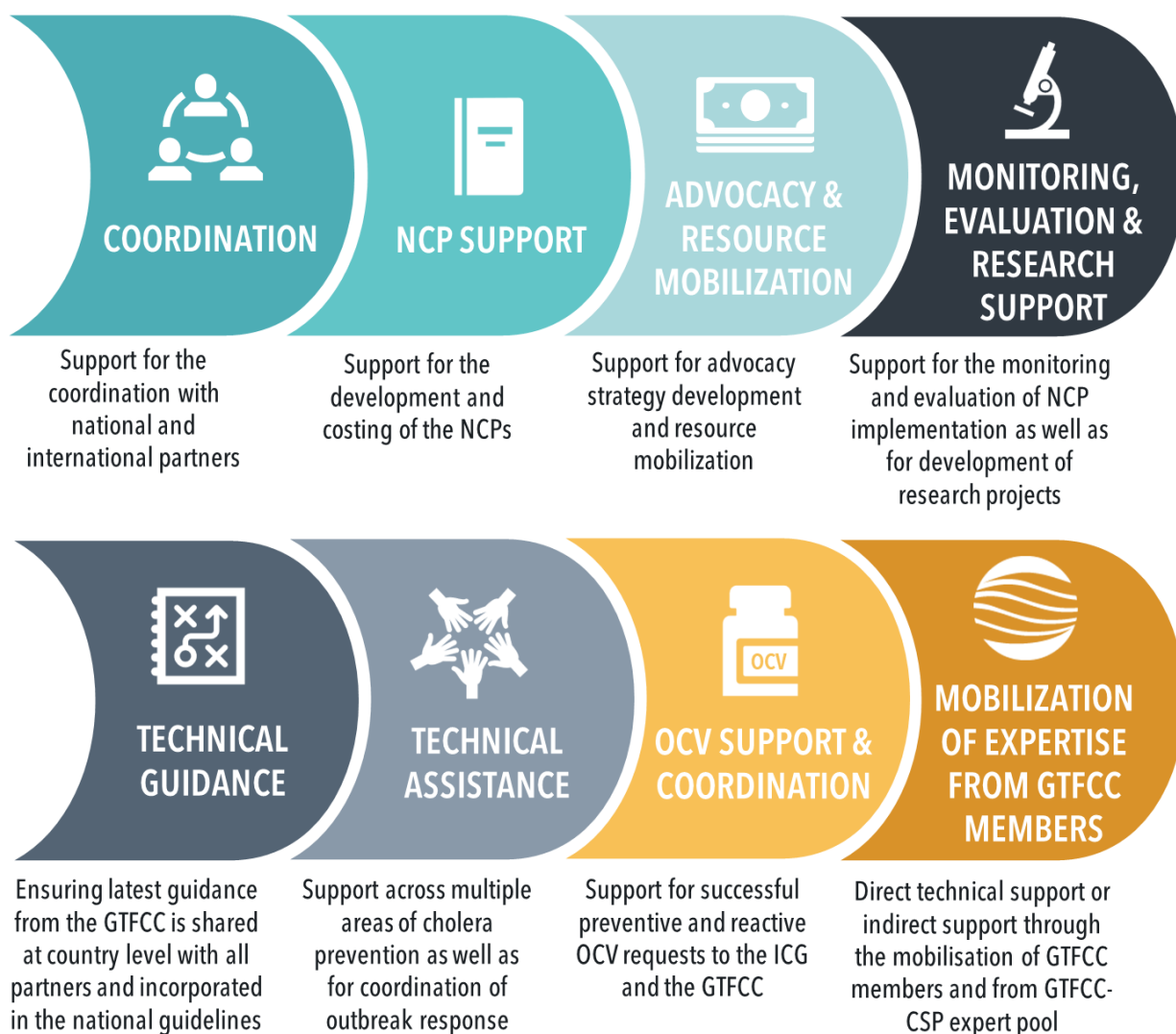
FUNDING

The Bill & Melinda Gates Foundation is supporting the Country Support Platform through a grant **for an initial period of three years which is channelled directly by the Foundation to IFRC**. Resource gaps for country support are in the process of being identified, and subsequent calls for additional funding are regularly issued.

ACTIVITIES

In support of countries, the CSP:

- Ensures that cholera interventions are coherent, evidence based, aligned with the government and Global Roadmap objectives, and summarized into a comprehensive National Cholera Plan (NCP)
- Facilitates the coordination of technical assistance at national level from GTFCC members and other stakeholders
- Supports advocacy and resource mobilization efforts for the implementation of countries' NCPs
- Provides support for the monitoring & evaluation of NCPs as well as implementation of priority research projects
- Provides coordination for GTFCC partners' activities to ensure coherent, optimized, and synergized interventions and adherence to GTFCC approved guidance, standards, and quality assurance across different regions



HOW CAN GTFCC PARTNERS AND DONORS HELP THE CSP?

GTFCC partners and donors can contribute to country support for cholera control by:

- **Coordination:** Helping the CSP in supporting national coordination – sharing information on activities and projects implemented in cholera affected countries
- **Technical assistance:** Supporting the CSP with technical expertise – responding directly to countries requests or indirectly through expert loan (skill-based sponsorship) or through the GTFCC – CSP expert pool
- **Advocacy & Resource Mobilization:** Aligning as one behind the national cholera control plans to help governments engage in cholera elimination in a structured and coordinated way.

FOR MORE INFORMATION

To express interest in receiving support from or providing expertise to the CSP please contact the CSP Team: Thomas.Mollet@ifrc.org: (CSP coordinator), Annika.Wendland@ifrc.org (Senior Officer, National Control Plans), Annesophie.Porche@ifrc.org (CSP Technical Support) with copy to gtfccsecretariat@who.int.