

Randomized Controlled Trials of Evidence-Informed WASH Programs to Reduce Cholera in Bangladesh and the Democratic Republic of the Congo

Christine Marie George, PhD
Associate Professor
Department of International Health
Johns Hopkins School of Public Health
cmgeorge@jhu.edu

Cholera Hospital-Based Intervention for 7 days (CHoBI7)

Promoter Delivery of CHoBI7 WASH Pictorial Module



Health Facility Visit

+



Home Visits

CHoBI7 Mobile Health (mHealth) Program



Randomized Controlled Trial of CHoBI7 Mobile Health Program Delivery

Health Facility Delivery of CHoBI7



USAID
FROM THE AMERICAN PEOPLE

+

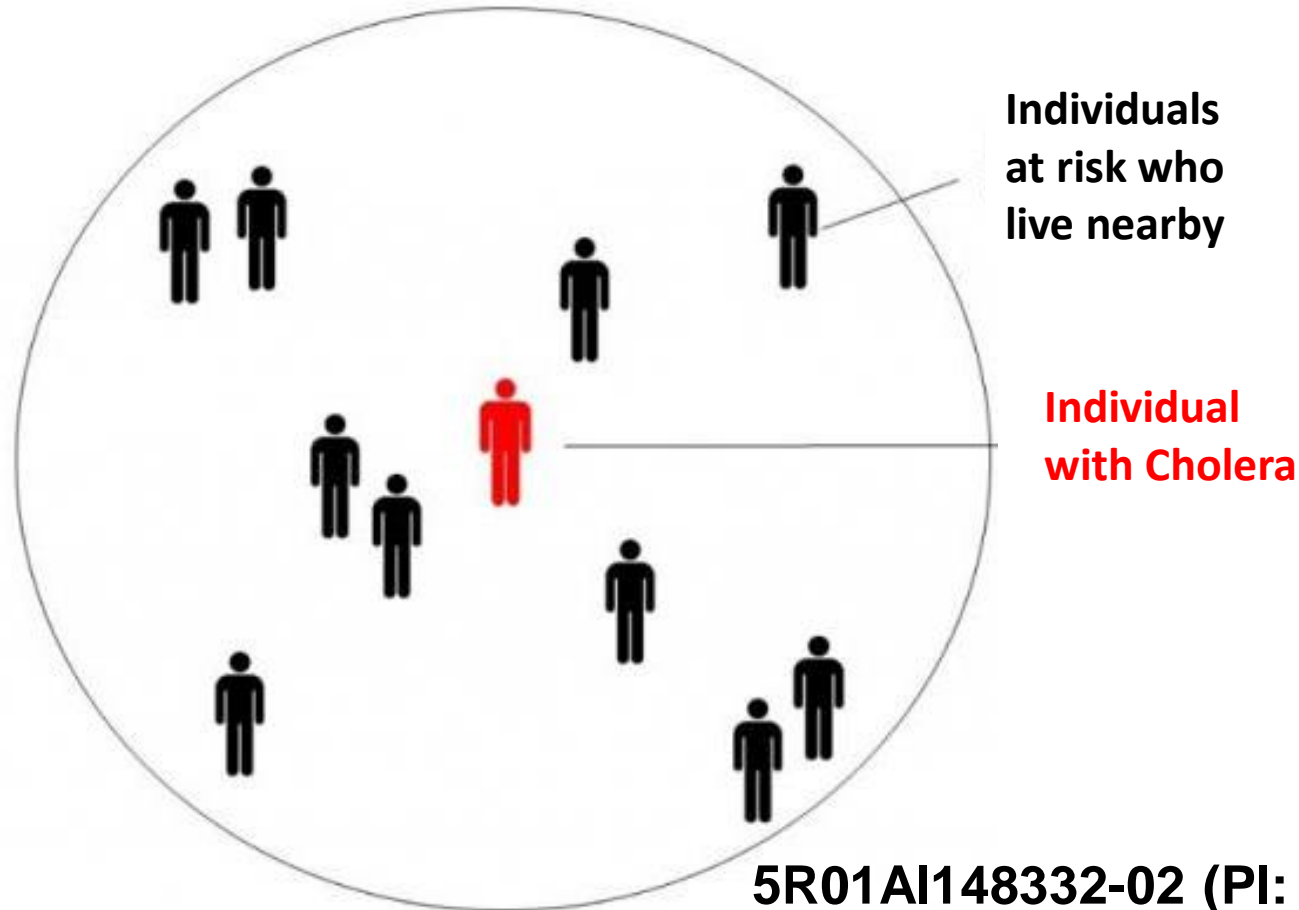
Weekly Voice and Text Messages for 12 Months



Ministry of Health and Family Welfare
(MOHFW)

CHoBI7 Ring Water, Sanitation, and Hygiene Intervention to Reduce Cholera in Hotspots in Bangladesh

Hotspots for Cholera



Rapid Response Teams



Source: UNICEF

5R01AI148332-02 (PI: George)



National Institute of
Allergy and
Infectious Diseases

Evidence Based Targeted WASH Interventions to Reduce Cholera in Hotspots in Democratic Republic of the Congo (PICHA7)

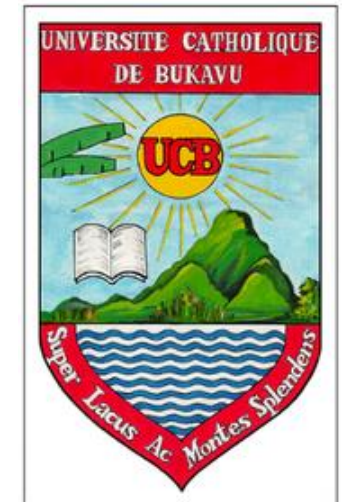
Cholera Cases Annually Globally



Source: Ending Cholera: A Global Roadmap to 2030



Department
for International
Development



MINISTÈRE DE LA
santé

Evidence Based Targeted WASH Interventions to Reduce Cholera in Hotspots in Bukavu, DRC (PICHA7)

WASH Module for Cholera Patients Households



Reduce Cholera among Household Members of Cholera Patients



Evidence Based Targeted WASH Interventions to Reduce Cholera in Hotspots in Bukavu, DRC (PICHA7)

WASH Module for Cholera Patients Households



Reduce Cholera among Household Members of Cholera Patients



- **Formative research for intervention development**

Preventative Intervention for Cholera for 7 Days (PICHA7) Democratic Republic of the Congo



Evidence Based Targeted WASH Interventions to Reduce Cholera in Hotspots in Bukavu, DRC (PICHA7)

WASH Module for Cholera Patients Households



Reduce Cholera among Household Members of Cholera Patients



- **Formative research for intervention development**

Evidence Based Targeted WASH Interventions to Reduce Cholera in Hotspots in Bukavu, DRC (PICHA7)

WASH Module for Cholera Patients Households



Reduce Cholera among Household Members of Cholera Patients



- Formative research for intervention development
- Randomized controlled trial of targeted WASH intervention

Evidence Based Targeted WASH Interventions to Reduce Cholera in Hotspots in Bukavu, DRC (PICH7)

WASH Module for Cholera Patients Households



Reduce Cholera among Household Members of Cholera Patients



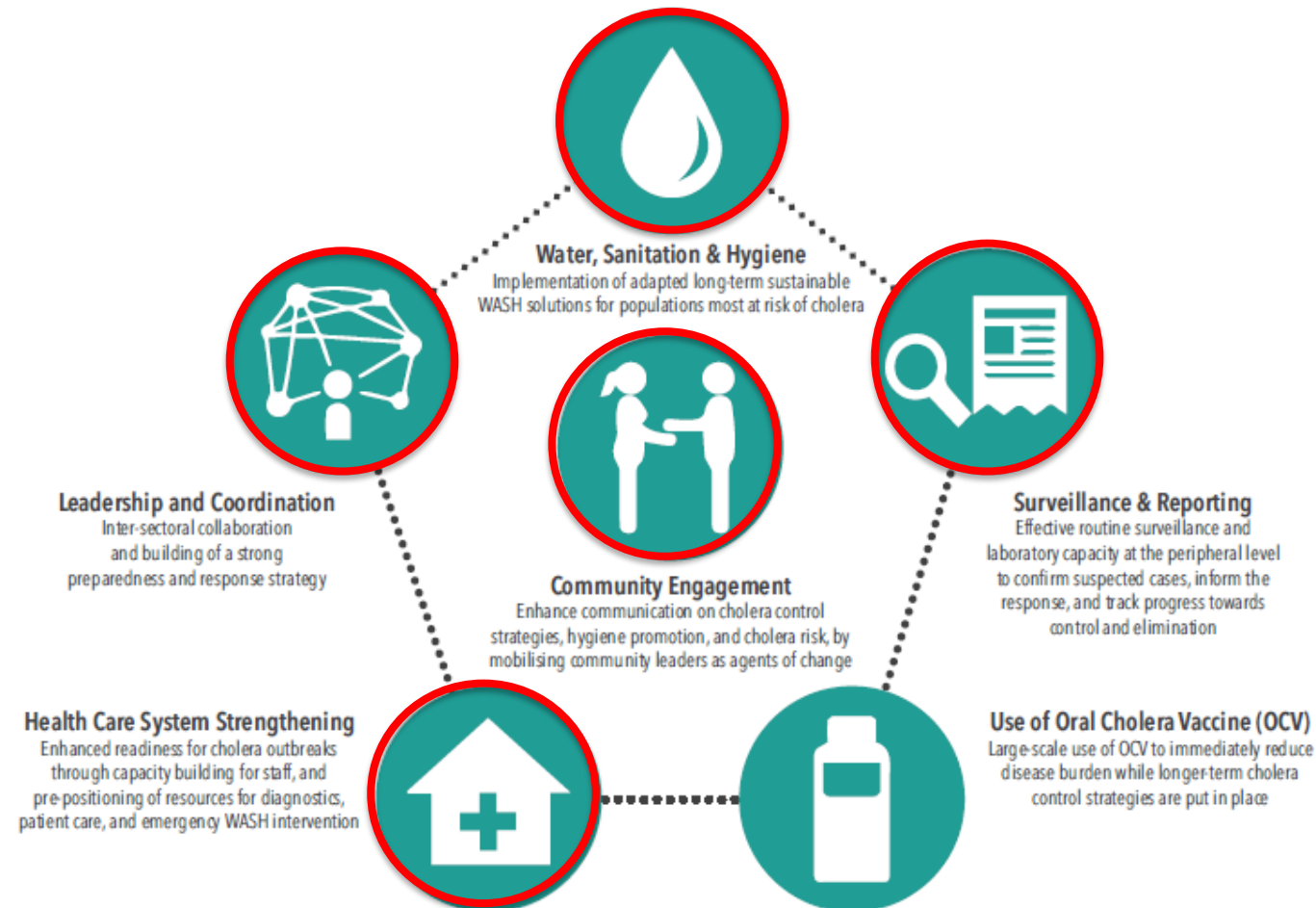
- Formative research for intervention development
- Randomized controlled trial of targeted WASH intervention
- Genomics to investigate transmission dynamics of *Vibrio cholerae* from water sources and clinical strains

PICHA7 Enteric Microbiology Laboratory



Evidence-Informed WASH Programs to Reduce Cholera in Bangladesh and the Democratic Republic of the Congo

ENDING CHOLERA- A GLOBAL ROADMAP TO 2030



Ministry of Health and Family Welfare (MOHFW)