



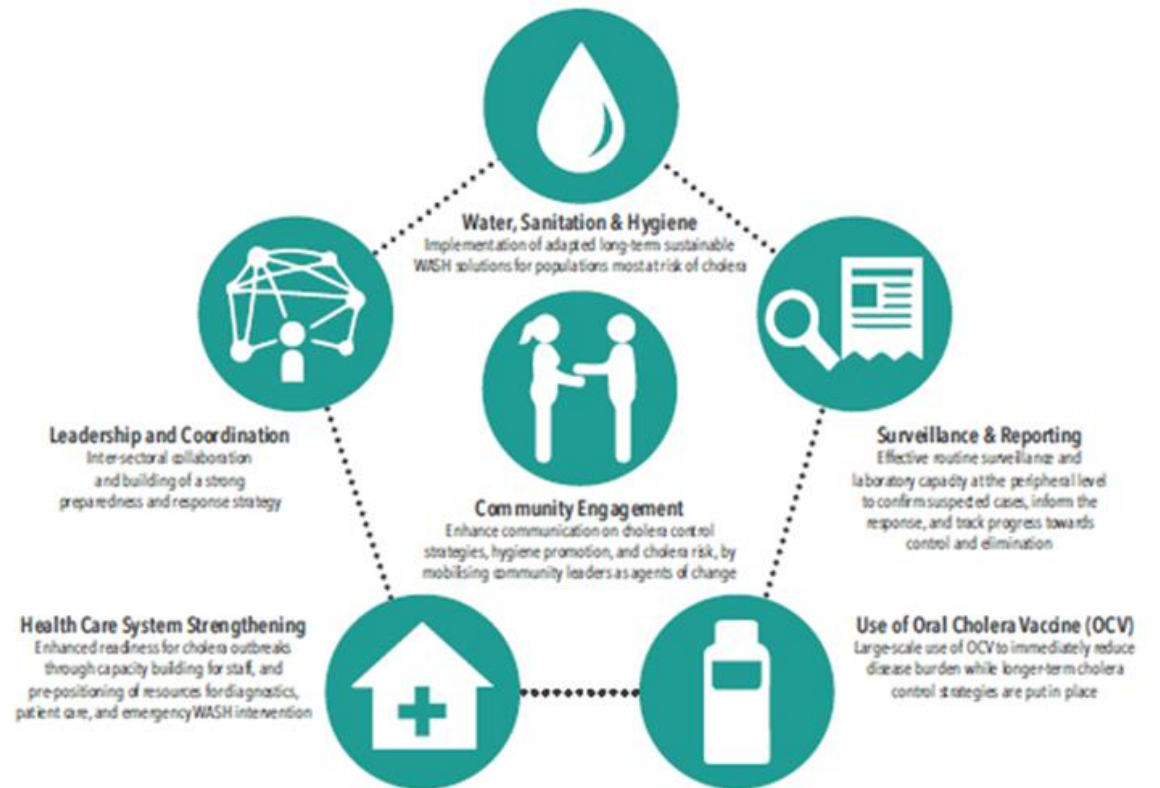
GLOBAL TASK FORCE ON
CHOLERA CONTROL

COMMUNITY ENGAGEMENT UPDATE
GTFCC ANNUAL MEETING – 8,9,10 JUNE 2021

Kate Alberti on behalf of the
Community Engagement partners

WHY COMMUNITY ENGAGEMENT

- reporting illness
- belief treatment is effective /
- home treatment or being treated in the community
- practising safe hygiene behaviours
- drinking clean water
- safely disposing of excreta
- preparing food safely
- trusting and accepting vaccination



CHALLENGES AND EXPECTED OUTCOMES



Creating a common understanding and buy-in of community engagement

community activities \neq community engagement and accountability

Information sharing \neq community engagement and accountability



CHALLENGES AND EXPECTED OUTCOMES

Creating a common understanding of community engagement

Meaningful participation from the outset, putting the community at the centre of decision making, taking communities capacities and vulnerabilities into account, acting on community feedback, accountability to the community, protecting the rights and dignity of the community

2021 – 2022 PRIORITIES



- Landscape analysis of existing guidance / tools and identify gaps
- Creation and maintain an accessible repository of tools and guidance
- Identify community engagement needs/projects with all GTFCC WGs
- Develop a series of baseline questionnaires for community engagement to be used by all pillars
- Identify research gaps
- Become an official Working Group

COMMUNITY ENGAGEMENT PARTNERS

GOAL Global

International Federation of Red Cross and Red Crescent

International Medical Corps

International Rescue Committee

Médecins Sans Frontières

Oxfam

Premiere Urgence Internationale

Risk Communication and Community Engagement (RCCE) Collective

Social Science Analytics Cell (CASS) - DRC

UNICEF

WaterAid

Thank you

Together we can
#endcholera



GLOBAL TASK FORCE ON
CHOLERA CONTROL