

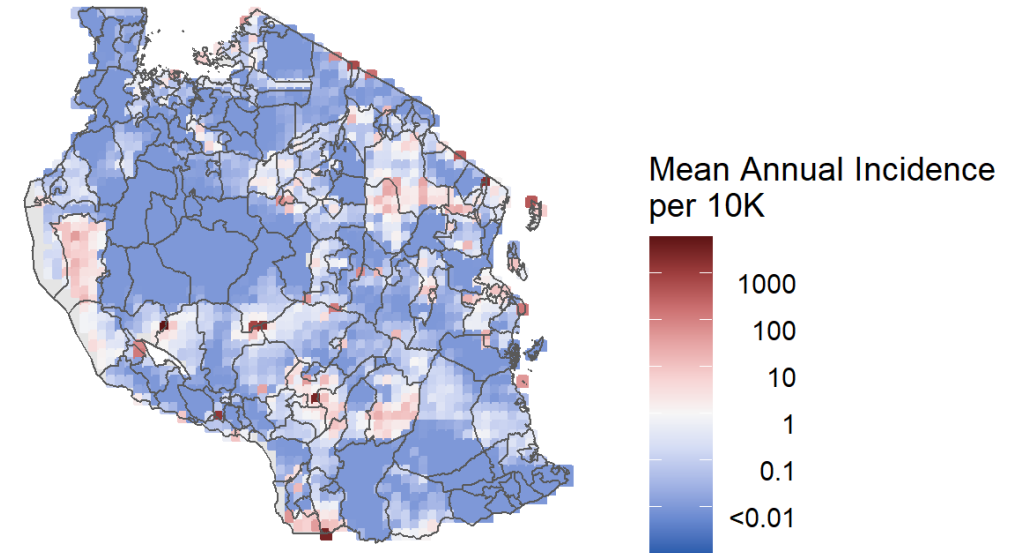
# Update on the GTFCC cholera database

Elizabeth C. Lee for the JHU Cholera Dynamics Team

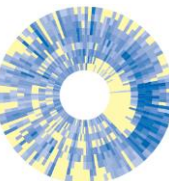
GTFCC Annual Meeting – June 8, 2021

# Monitoring progress towards *Roadmap* goals

- Map the geographic burden of disease
- Monitor key GTFCC indicators and hotspots over time
- Track information on WASH and vaccination interventions

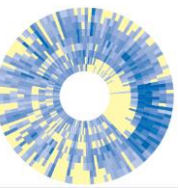


Tanzania, 2015-2019  
Preliminary estimates 20 km x 20 km

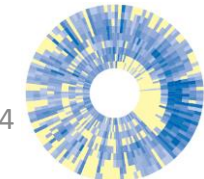


# Key database features

- Centralized repository for cholera surveillance data
- Flexible structure supports any kind of data that can be linked to locations and time periods (e.g., incidence, deaths, hotspots from situational analysis, documents, OCV use, seroincidence data)
- Hosts raw data and visualizations of modeled output
- Development of country and regional profiles that summarize key cholera data and risk factors

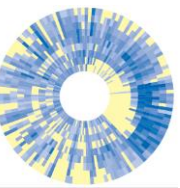


# Country profiles: updates since October

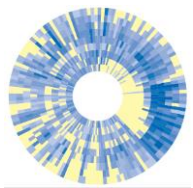


# Future plans

- Expand features related to “unified data sets,” including automated cleaning of key datasets and display of epidemic curve figures
- Improve visualizations and layout for more intuitive design
- Refine printable version of country profile
- Pilot and provide broader access to MOH and GTFCC partners towards the end of the year

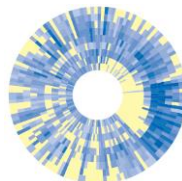
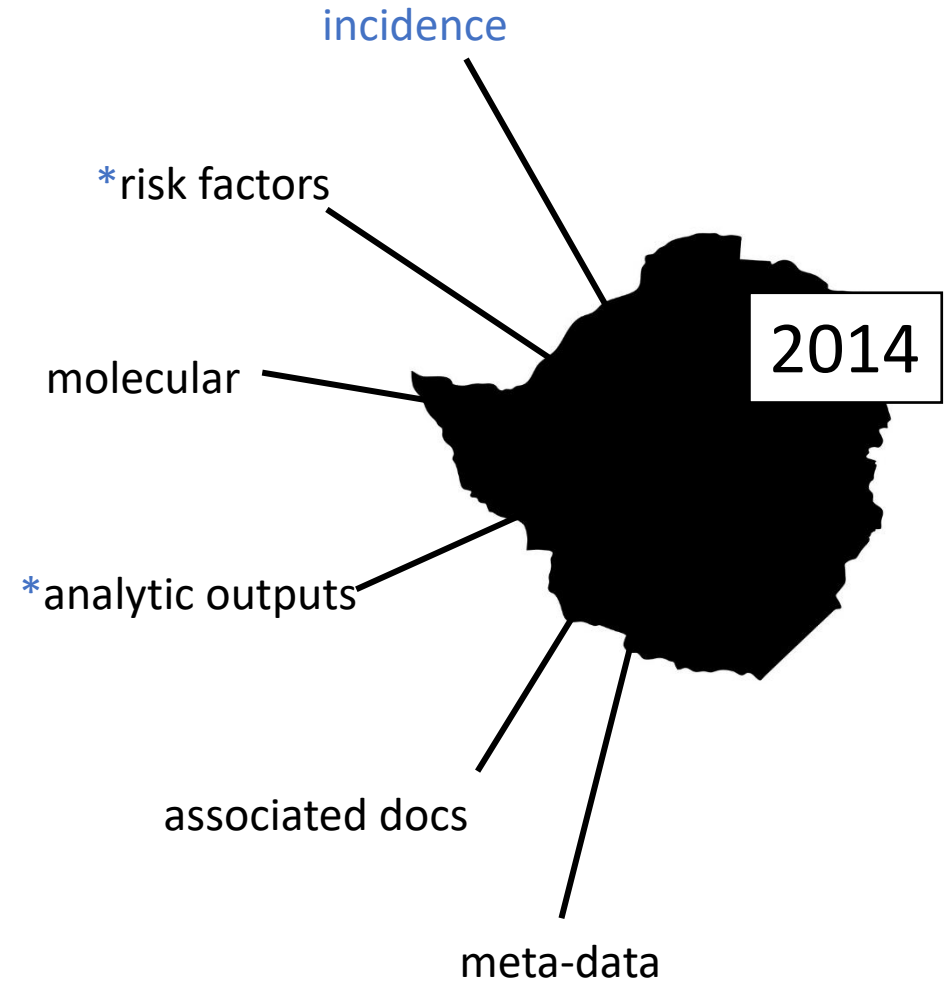


# Backup Slides



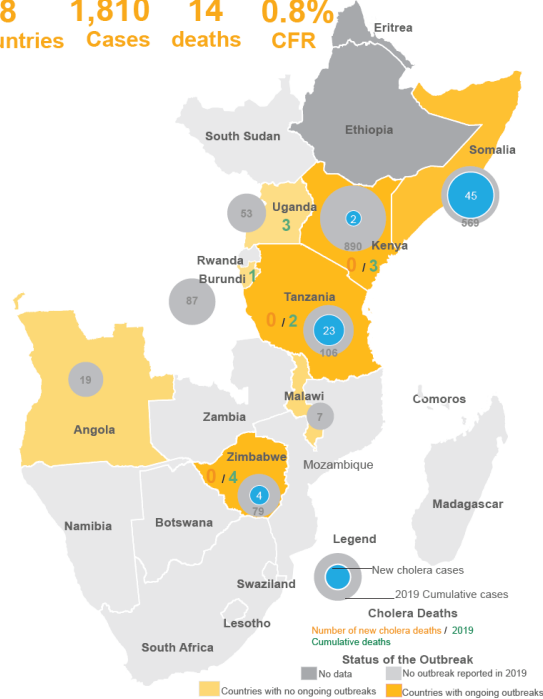
# Organizing principles

- All data is indexed by location periods.
  - A location (which may contain other locations)
  - A defined period of time
- Database is “weakly typed”
  - Few restrictions on the types of data that can be associated with location periods.
- Flexible access

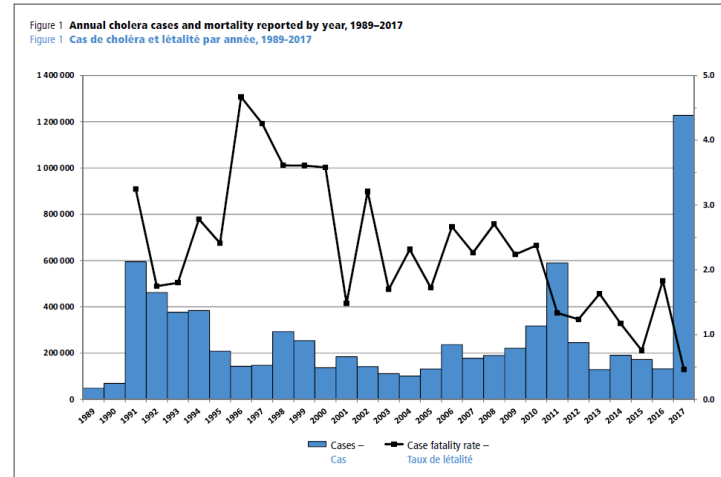


# Data come in many shapes and sizes

8 Countries, 1,810 Cases, 14 deaths, 0.8% CFR



Sources: Ministries of Health and WHO



Published Date: 2019-05-09 12:55:05  
 Subject: PRO/EDR> Cholera, diarrhea & dysentery update (12): Africa, Asia  
 Archive Number: 20190509.6460944

CHOLERA, DIARRHEA AND DYSENTERY UPDATE (12): AFRICA, ASIA

A ProMED-mail post  
<http://www.promedmail.org>  
 ProMED-mail is a program of the International Society for Infectious Diseases  
<http://www.isid.org>

In this update:  
 Africa  
 ---  
 [1] Cholera - Somalia: WHO  
 [2] Cholera - Zimbabwe  
 [3] Cholera - Mozambique (northern)  
 [4] Cholera - Kenya (Hardera County)  
 [5] Cholera - Kenya (Embu County)  
 Asia  
 ---  
 [6] Cholera - Nepal (Kathmandu)

-----  
 Africa  
 ---  
 [1] Cholera - Somalia: WHO  
 Date: Tue 7 May 2019  
 Source: WHO Emergencies preparedness, response, Disease Outbreak News (DONs) [edited]  
<http://www.emro.who.int/pandemic-epidemic-diseases/cholera/outbreak-update-cholera-in-somalia-28-april-2019.html>

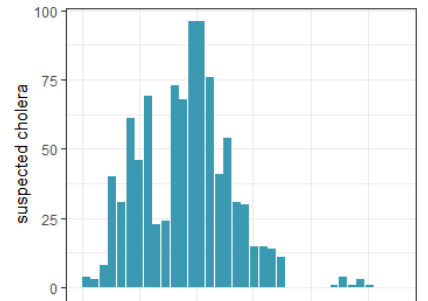
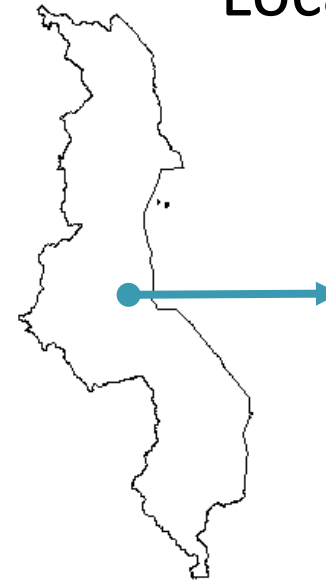
Outbreak update - Cholera in Somalia, 28 Apr 2019

The Ministry of Health (MoH) of Somalia has announced 36 new suspected cases of cholera, with no deaths, for epidemiological week 1 reported between epidemiological weeks 1 and 7 due to closure of the main cholera treatment center, from which data is collected the beginning of this outbreak in December 2017.

During the reporting period, cases occurred in 11 out of 17 districts in Banadir region, the worst affected district are Hodan (728) the cases (24) are children below 5 years of age.

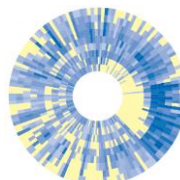
WHO, MoH, and partners have contained the cholera outbreak in the districts of Jubaland, Hirshabelle, and South West states following (OCV) campaigns and other health interventions. However, active transmission is ongoing in 11 districts in Banadir -- Darkenly, D Bondera, Kahda, Kaaran, Waberi, and Warta nabada).

## Locations



## Time Periods

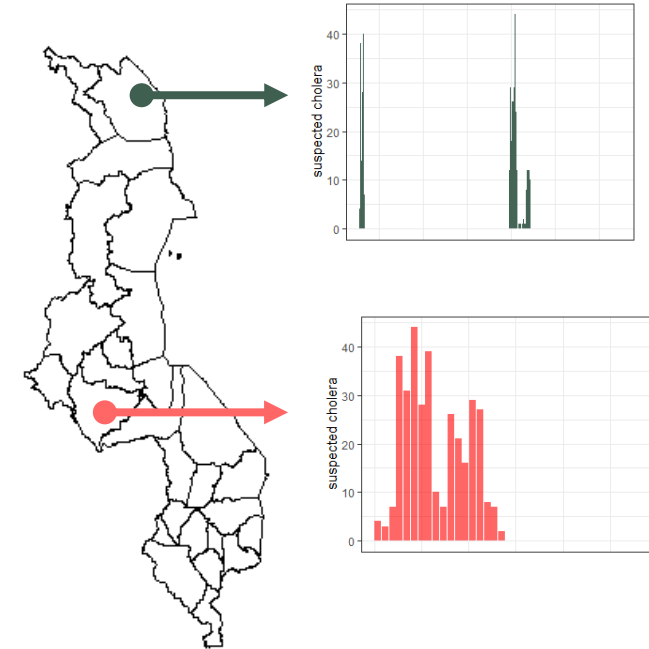
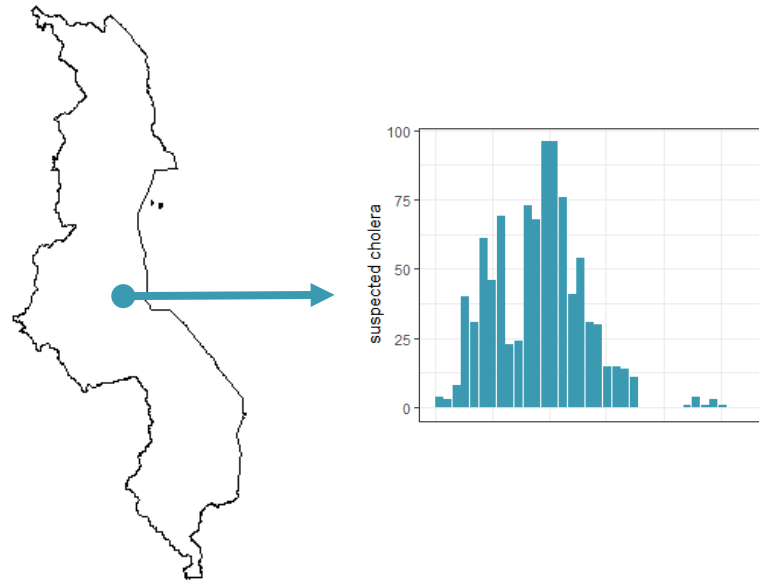
E6					
	A	B	C	D	E
1	Country	Week 1		Week 2	
2		Cases	Deaths	Cases	Deaths
3	Mozambique	0	0	0	0
4	Kenya			115	2
5	Somalia	87	0	87	0





# Data are linked to locations and time periods

Locations



Time Periods

