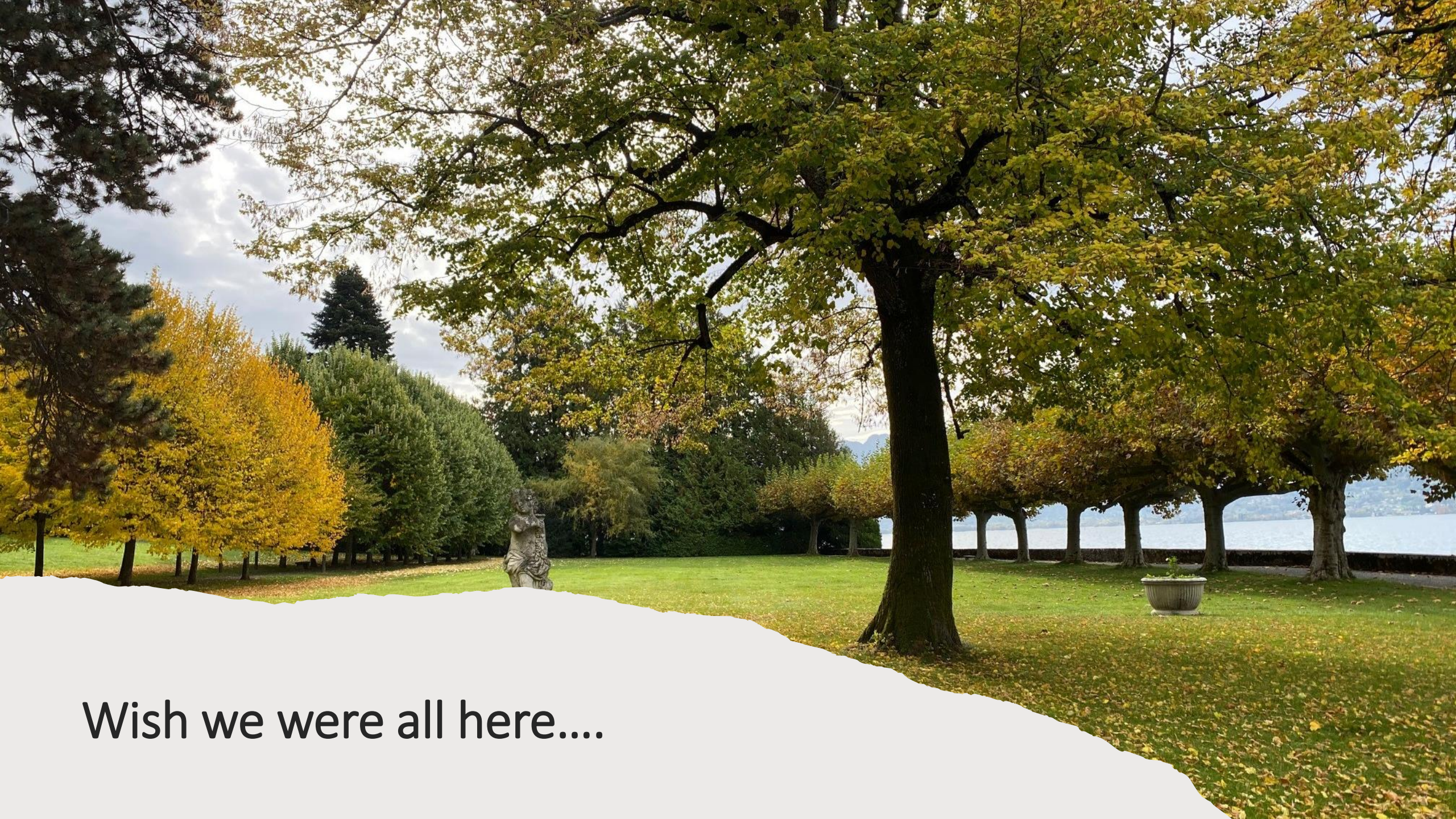




GLOBAL TASK FORCE ON
CHOLERA CONTROL

Country Support Platform (CSP) progress report,
GTFCC Annual Meeting – 8 June 2021



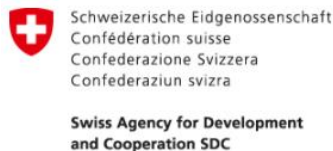
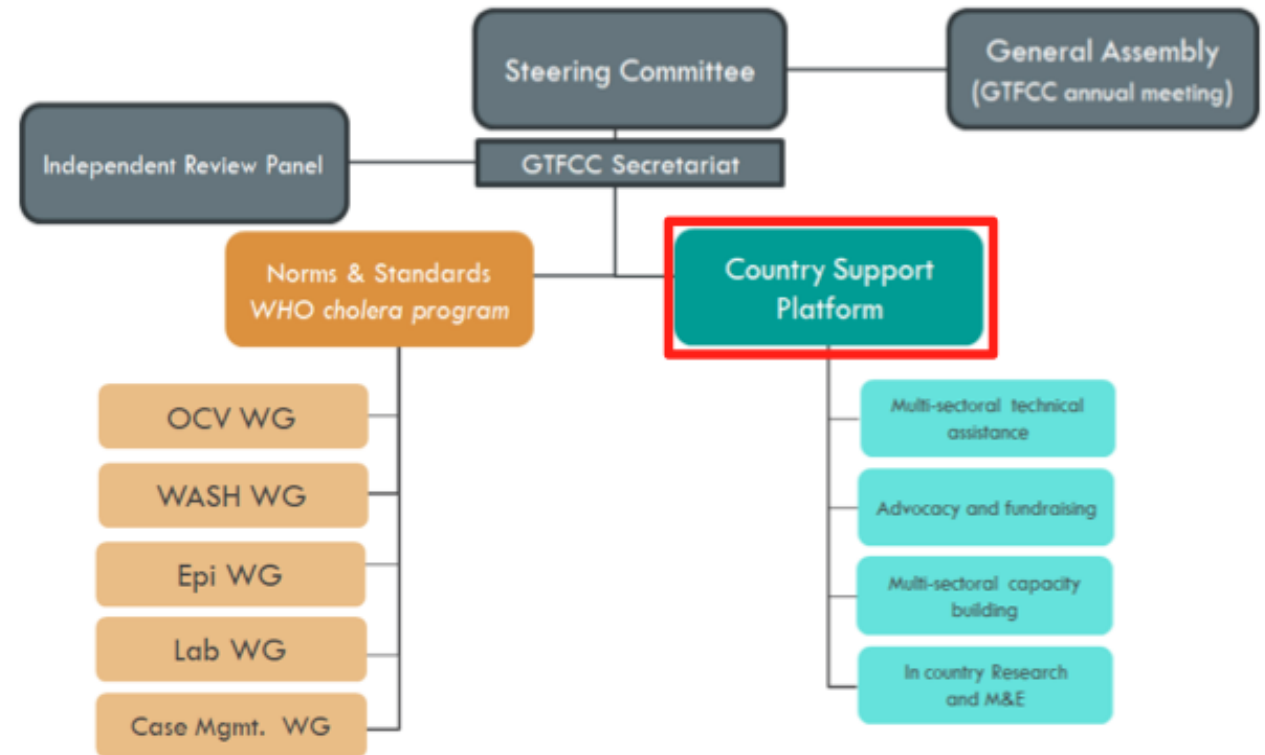


Wish we were all here....

Background, Country Support Platform

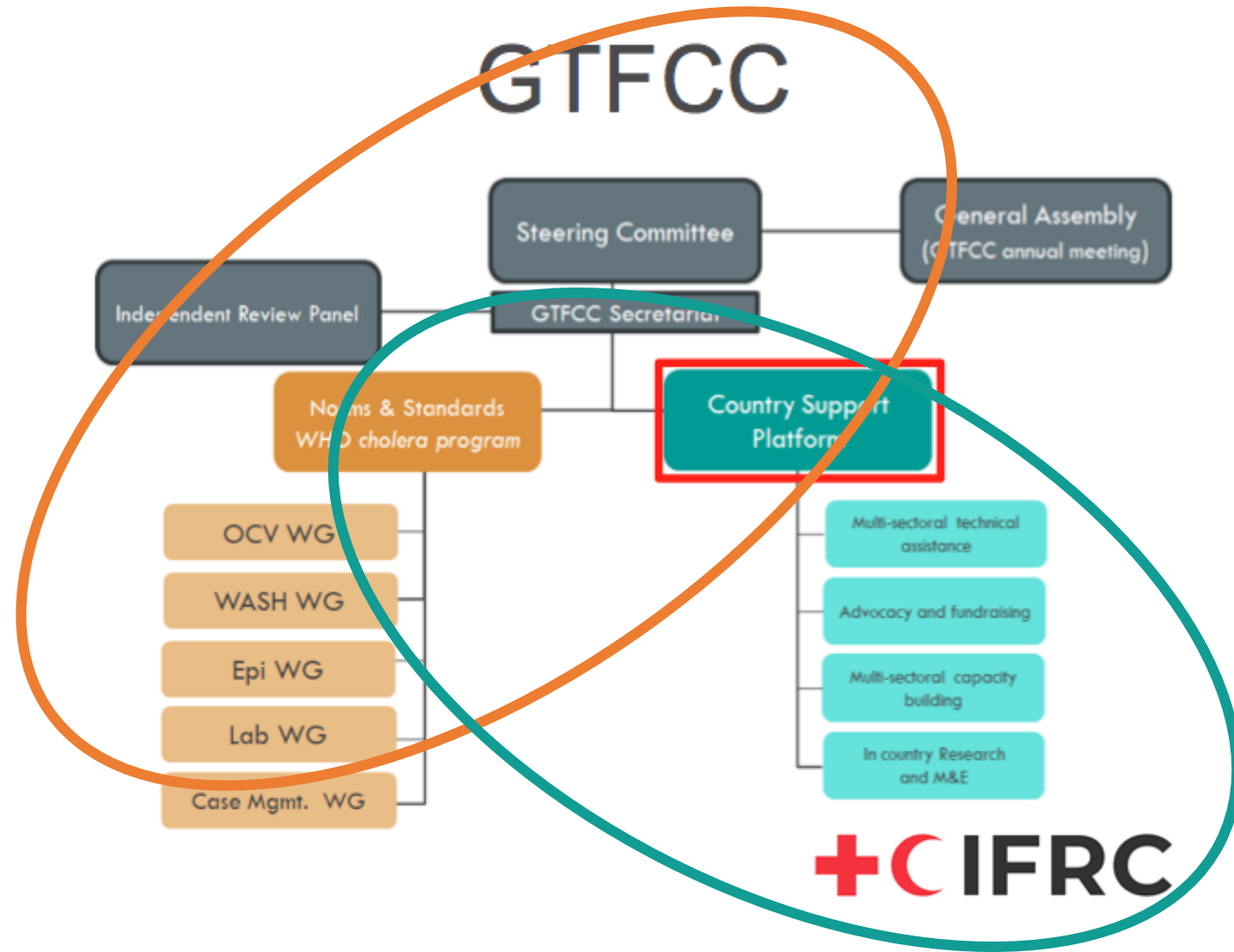
- Cholera affected countries have called for **additional technical support from the GTFCC** in the development and implementation of their National Control Plans (NCPs).
- At its 6th annual meeting in 2019, the GTFCC **endorsed the establishment of a Country Support Platform (CSP)** as an operational arm of the GTFCC
- At the 7th annual meeting [Oct. 2020], the GTFCC officially announced that the **International Federation of the Red Cross and Red Crescent Societies (IFRC)** has been selected to host and manage the CSP in close consultation with the GTFCC
- The primary donor to establish the CSP over the next three years is BMGF by a grant awarded to IFRC. Other donors such as SDC are entering into similar grant agreements with IFRC. Similarly, a grant agreement with Wellcome Trust to be awarded to British Red Cross is under negotiation, that will support cholera research led by the GTFCC.

GTFCC



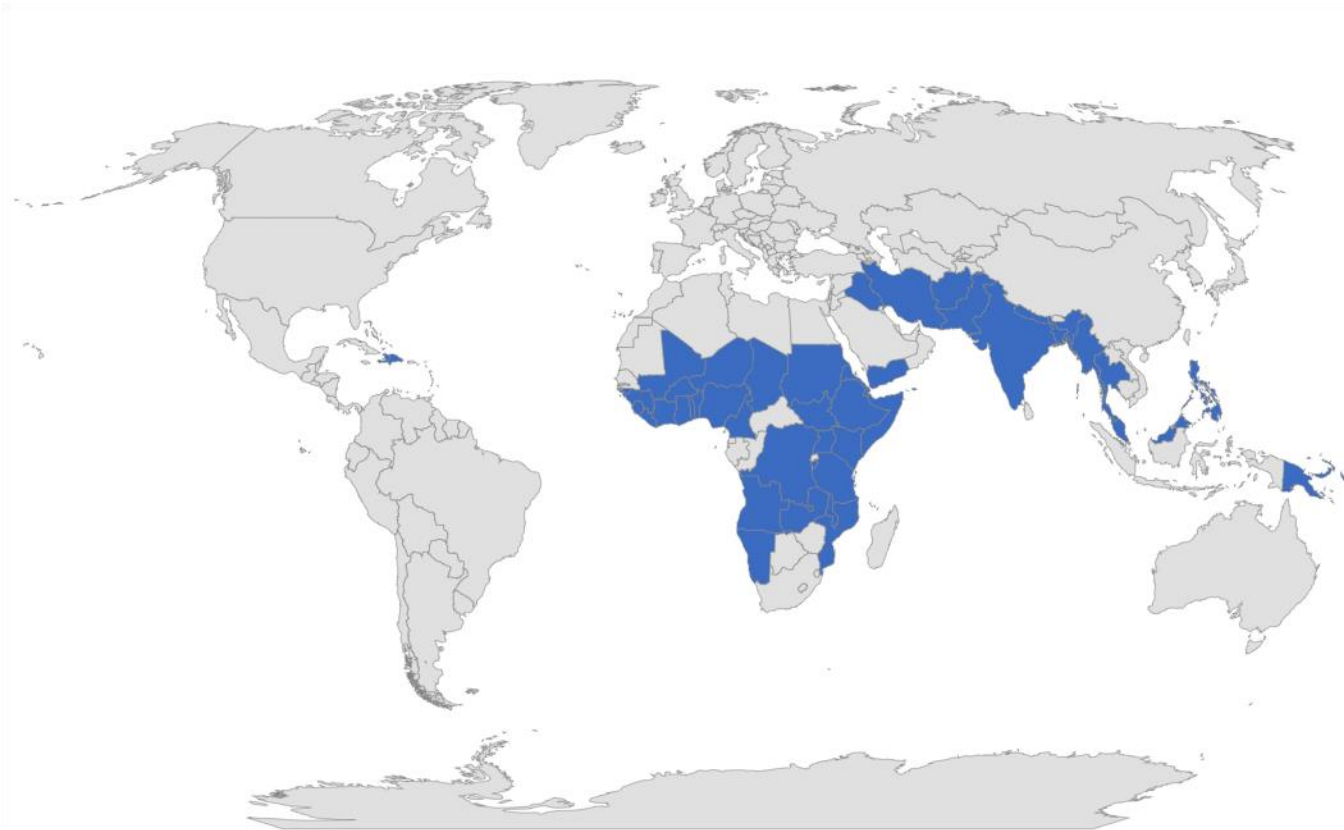
Function, Country Support Platform

- The CSP will function as an **operational arm of the GTFCC**, as an extension of the GTFCC, hosted by the IFRC.
- The **mission of the CSP is country support**. The majority of CSP staff will be located in country (progressive expansion)



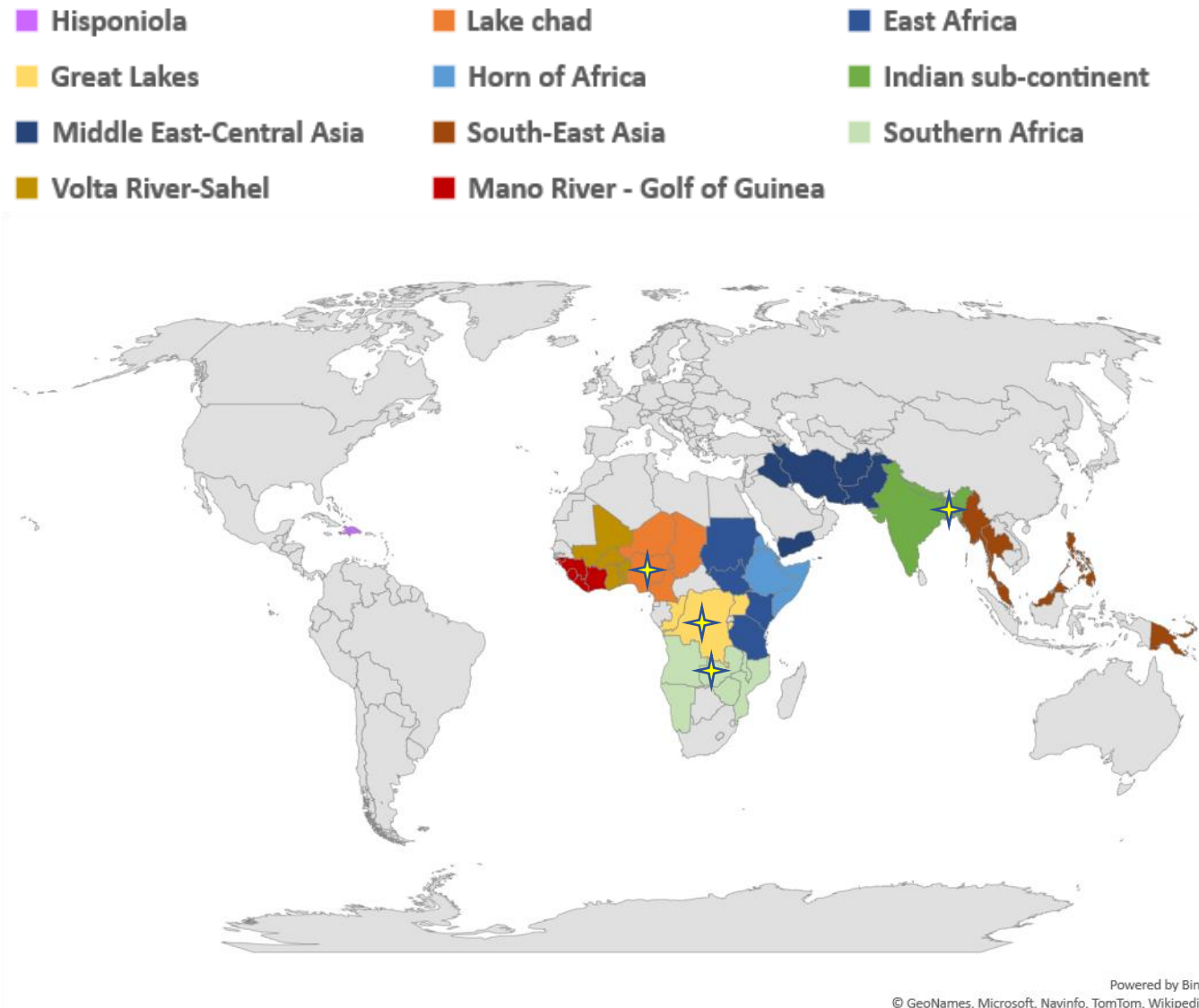
Country selection process, phased approach

■ Countries targeted by the Roadmap



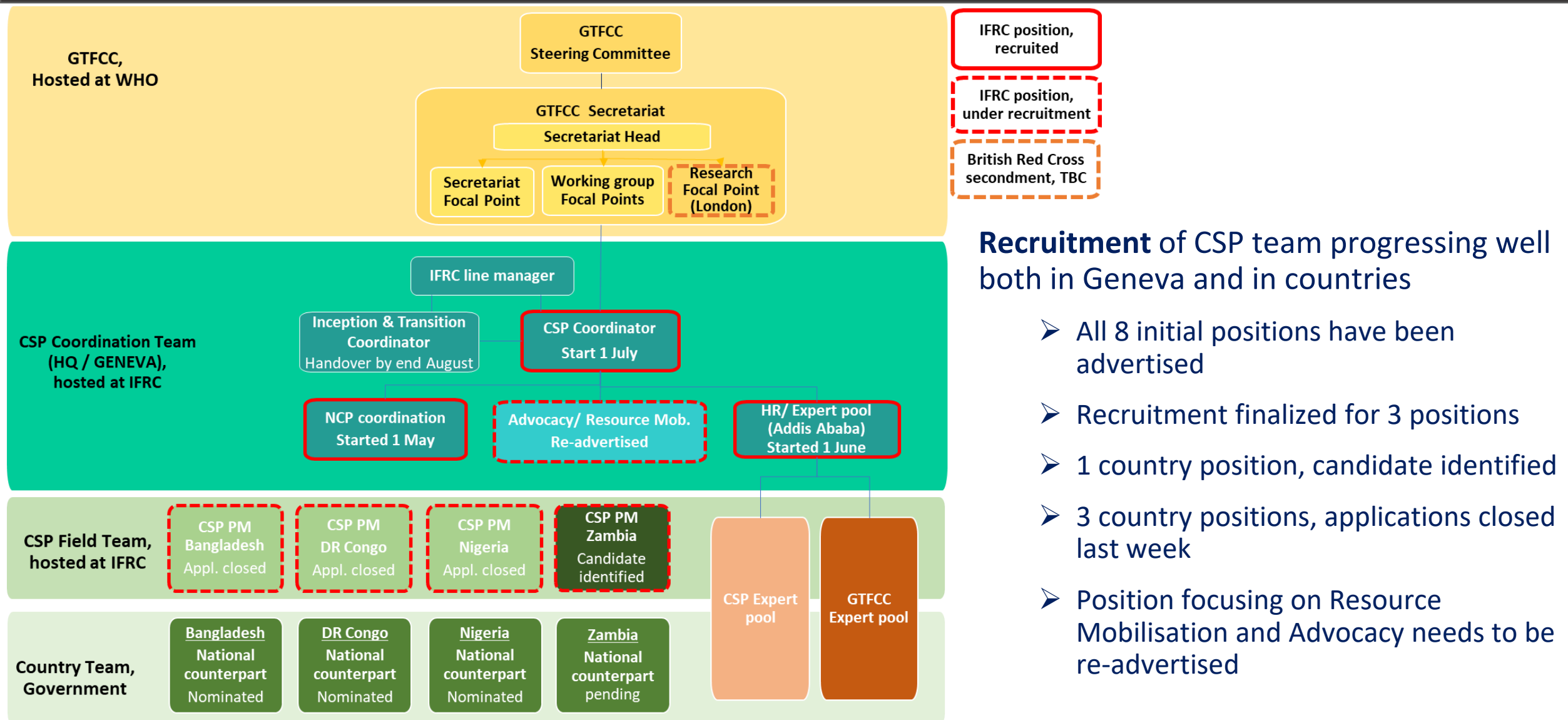
- 47 cholera affected countries
- Roll out in step-wise approach → allow sharing of country experience and adjusting of operational model
- Recommendations from 7th Annual meeting for selecting initial 4 countries
 - Reported cholera to WHO in past 3 years (*proxy for burden*)
 - Availability of NCP & hotspot mapping or engagement in the process (*proxy for country commitment to Roadmap*)
 - Implementation of OCV campaign in the past (*proxy for practical implementation of control activities*)
 - Considering country context that may hamper programmatic implementation of Roadmap goals

Country selection process, phased approach

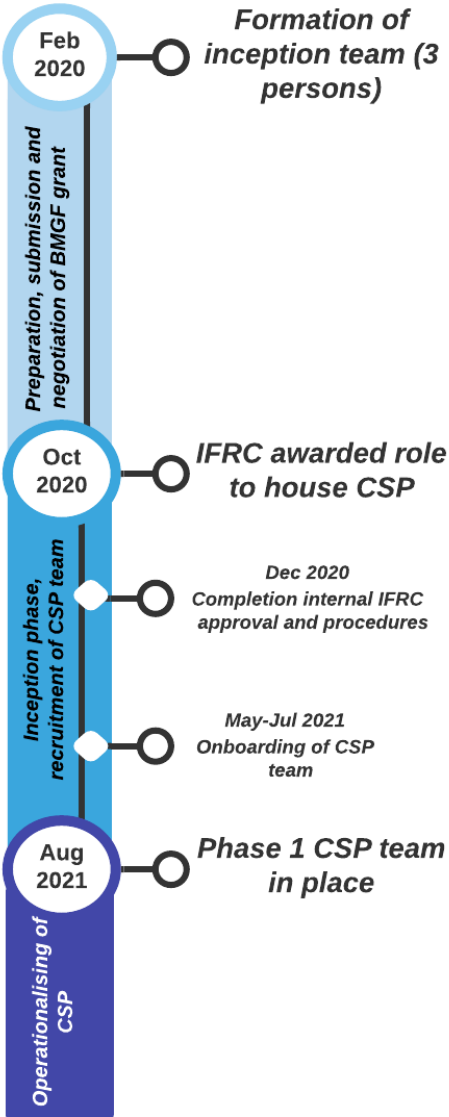


- 11 hubs proposed, based on geographic location and size (not too large to dilute support) – these may be adjusted, depending on the needs we identify together
- 4 initial countries selected according to criteria
 - Bangladesh
 - Democratic Republic of the Congo
 - Nigeria
 - Zambia
- CSP country manager to be based in country, coordinate support to other countries in hub as required
- Progressively over the next years, expand country support through
 - Establishing additional hubs
 - Short-, medium- or longer-term deployments in countries
 - Remote support

Structure and recruitment, Country Support Platform



CSP – where are we now?



Inception phase

- Extended from 6 to 10 months
- Selection of initial countries to host CSP programme manager
- Development of proposal, agreements
- Continuing dialogues with partners
- Recruitment
- CSP supported **deployments to Zanzibar** (OCV) and **Mozambique** (NCP development) and further support to countries is planned

Current: Handover phase from inception team to CSP team (IFRC internal support and backstopping to the CSP team will continue as part of its commitment to cholera roadmap goals)

Implementation phase

- The full CSP team will continue the work of the inception team to implement an operational CSP
- Work towards 3 key outcomes
- Continued engagement with GTFCC technical working groups

Objectives, Country Support Platform



Outcome 1

Countries develop and implement NCPs through a multisectoral coordination mechanism



Outcome 2

Countries have mobilized resources towards the funding needs identified in their NCPs



Outcome 3

Multisectoral technical support and capacity building provided to countries

➤ **Support at global level will include**

- Exchanging country experiences on NCP development, supporting process from inception → submission to the IRP → implementation
- Advocacy and resource mobilisation expertise
- Technical expertise from GTFCC partners including coordination of a pool of experts for short- or medium-term deployments based on needs expressed by countries

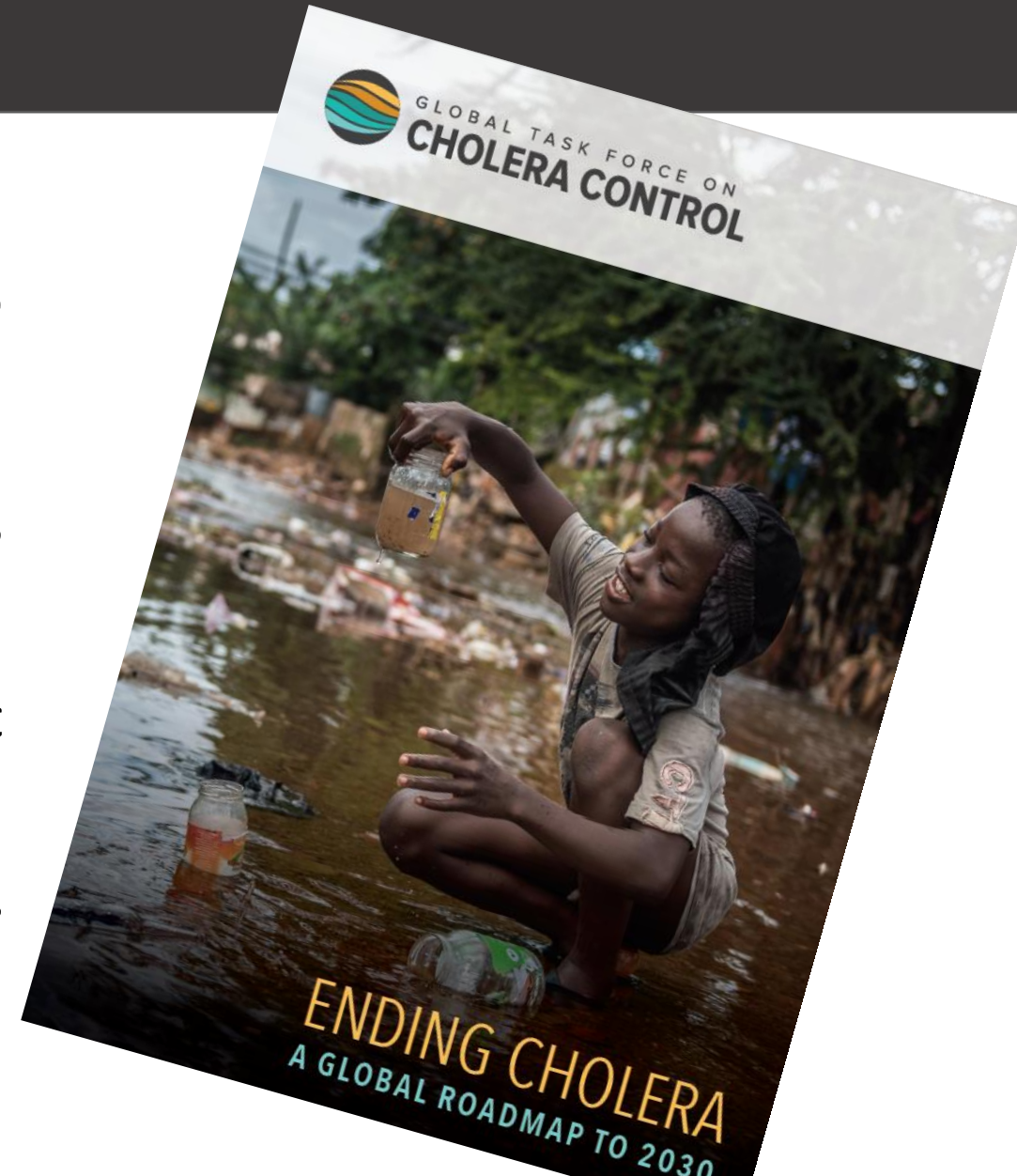
➤ **Support at country level include**

- CSP program managers working closely with countries to develop and implement their national cholera control plans
- Expanding research, laboratory support, community-based and national surveillance, cholera outbreak preparedness, OCV, both short term and longer-term WASH service provision.
- Ad-hoc support

How will cholera affected countries benefit from the CSP?

In support of countries, the CSP will:

- Work closely with countries, partners and donors to develop and implement multisectoral National Cholera Plan (NCP) coordinated by a national cholera platform/ mechanism
- Support resource mobilization and advocacy for NCP implementation
- Facilitate the coordination of technical assistance from GTFCC members and other stakeholders
- Provide support for the monitoring & evaluation of NCPs as well as implementation of priority operational research
- Provide ad-hoc support based on country needs



Milestones for the next 3 years

Coordination and planning (outcome 1)

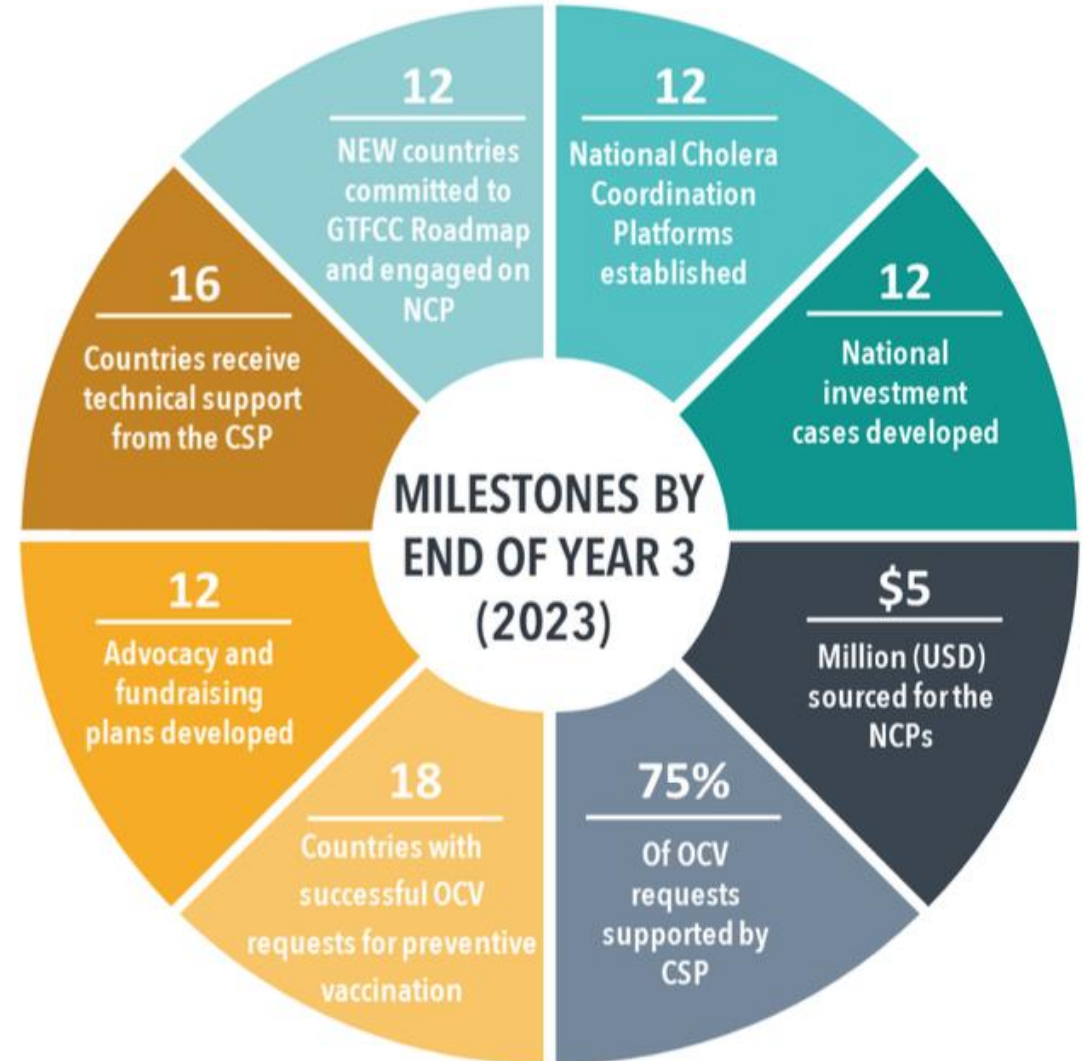
- # national cholera platforms created / supported
- # countries engaged in the process of NCP

Resource mobilization and advocacy (outcome 2)

- # countries with costed NCP and investment case
- # resource mobilization and advocacy plans developed
- # of resources (global and domestic) raised for the implementation of the NCPs

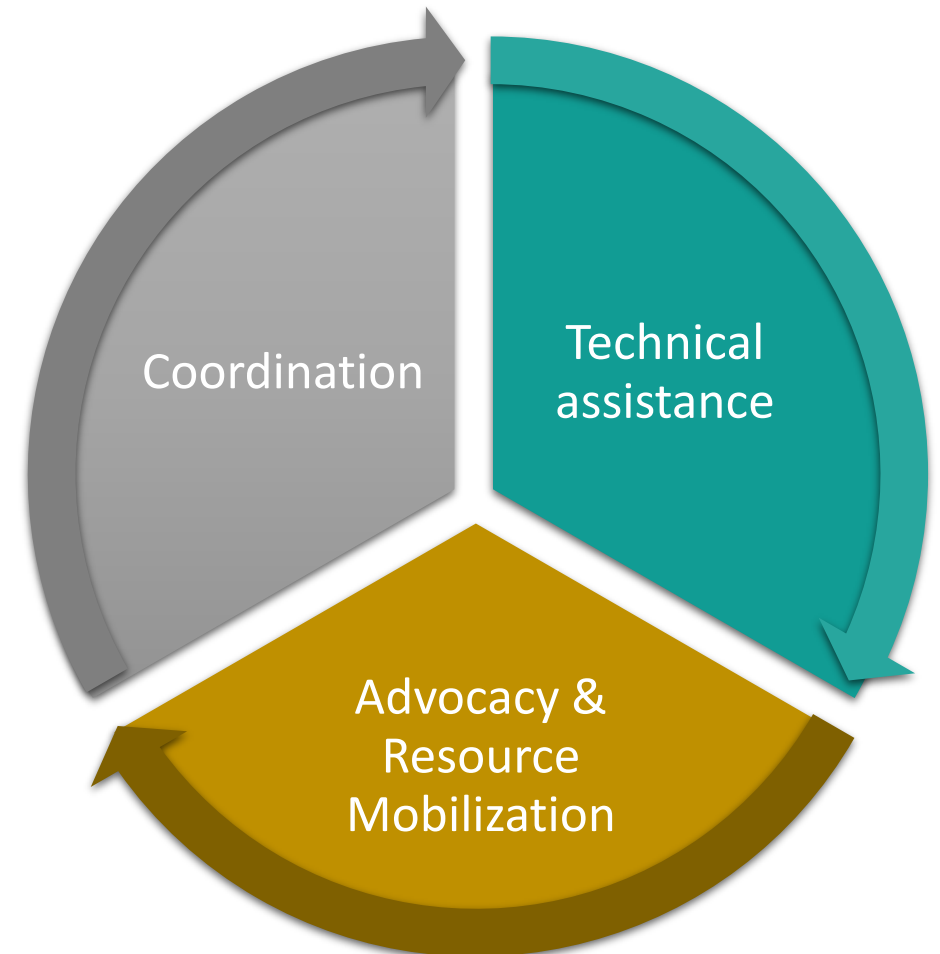
Technical support (outcome 3)

- # countries supported with technical assistance
- # of OCV requests receiving support from the CSP



How can GTFCC members, cholera partners and donors help the CSP assist countries to reach cholera elimination in a coordinated way?

- **Coordination (Output 1):** All cholera partners and donors can help the CSP in supporting national coordination – sharing information on activities and projects implemented in cholera affected countries.
- **Resource Mobilization & Advocacy (Output 2):** GTFCC members and donors may align as one behind the national cholera control plans to assist and support governments engaged in cholera elimination in a structured and coordinated way.
- **Technical assistance (Output 3):** GTFCC members, donors, can support the CSP with their technical expertise – responding directly to country requests or indirectly through expert loan (skill-based sponsorship or secondment) or through the GTFCC – CSP Expert pool





The vision of the CSP is
in its name:

Country Support

#endcholera

Get in touch

countrysupportplatform@ifrc.org



IFRC CSP Inception Team

Robert S M Fraser (Lead) *Senior Officer WASH* Robert.Fraser@ifrc.org

Alexandra Machado Soergel (Co-Lead) *Senior Officer WASH Public Health* Alexandra.Machado@ifrc.org

Christophe Valingot (Epidemiologist) *Consultant* christophe.valingot@outlook.com

IFRC CSP long term team

CSP coordinator – Thomas Mollet, start date 01 July 2021

Senior Officer, NCP coordination – Annika Wendland, started 01 May 2021 Annika.Wendland@ifrc.org

Officer, HR/ Expert Pool – Anne-Sophie Porche, started 01 June 2021

Senior Officer, RM and Advocacy

CSP country support manager, Bangladesh

CSP country support manager, DR Congo

CSP country support manager, Nigeria

CSP country support manager, Zambia

Recruitment in process



Thank you

Together we can
#endcholera



GLOBAL TASK FORCE ON
CHOLERA CONTROL