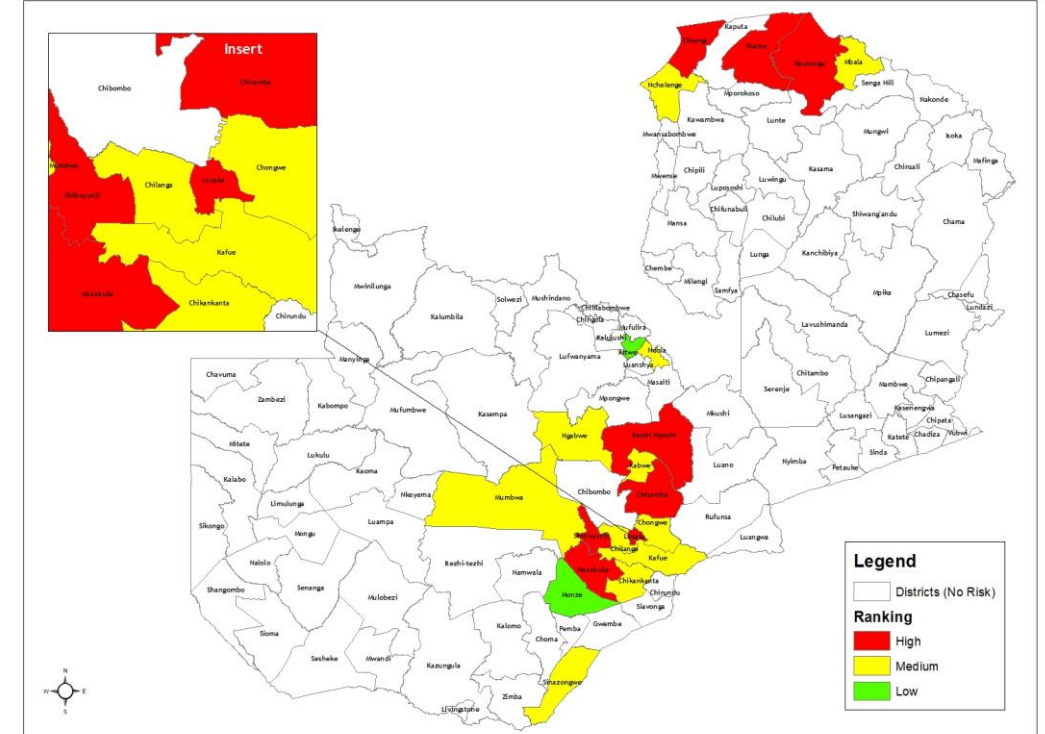


Status Update on WASH Towards Cholera Elimination in Zambia

Eng. Ulanda Nyirenda

**WASH Focal Point
Zambia**

Location and Cholera hotspots





Introduction

- In Zambia approximately 3.5 million people live in cholera hot spots
- Lack of access to adequate clean and safe water, poor onsite sanitation, poor hygiene and poor Solid Waste Management(SWM) practices are the main risk factors
- This is due to inadequate WASH & SWM infrastructure resulting in
 - Open defecation,
 - over crowding at shared latrines,
 - overflowing of latrines,
 - unhygienic conditions,
 - illegal waste dumping &
 - lack of adequate water for hand washing

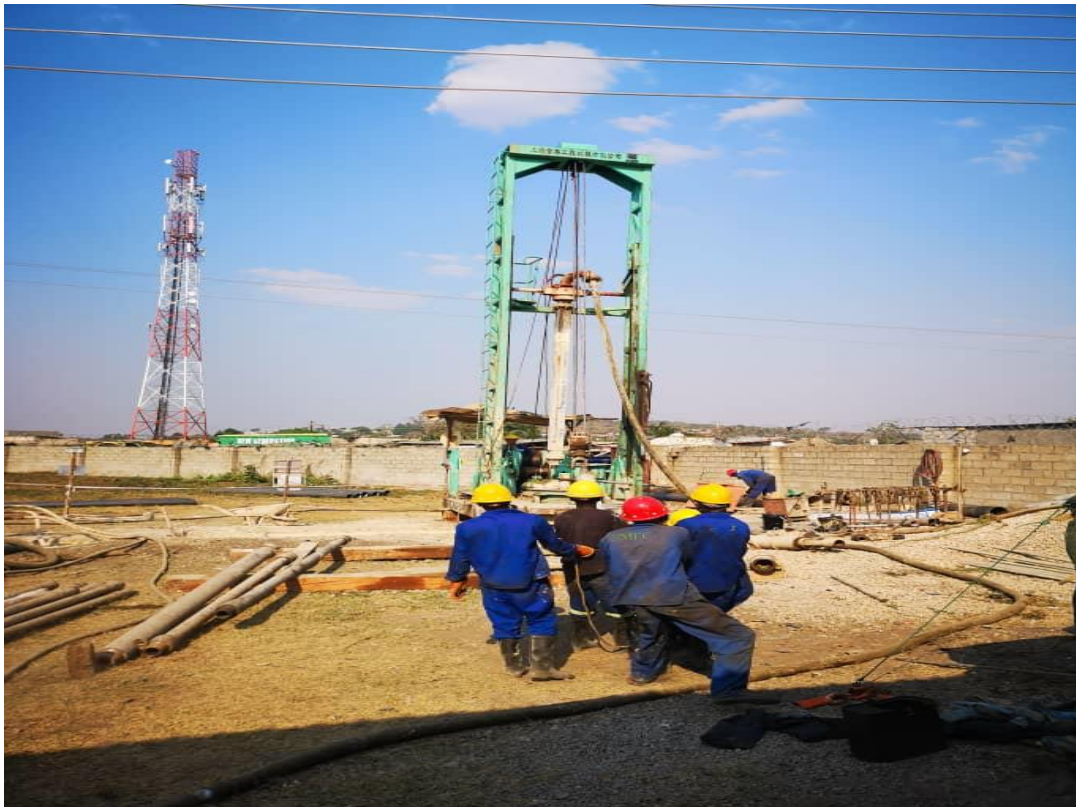


National WASH Targets in Cholera Hot Spots in Zambia

- To eliminate cholera by 2025, Zambia has:
 - i. Planned to provide universal access to clean, safe water and adequate sanitation and hygiene services
 - ii. Embarked on a reform process for WASH & SWM that includes
 - Enacting laws to strengthen the policy and regulatory framework
 - Provide clear policy direction
 - Provide for a framework that is responsive to SDGs
 - Address public health, environmental and climate change adaptation and mitigation

WASH Interventions in Cholera Hot Spots

Emergency Works in Peri- urban cholera hot spots in Lusaka at a cost of \$4.5 million benefiting 95,000 people



WASH Interventions in Cholera Hot Spots

Reservoir and Booster Station



WASH Interventions in Cholera Hot Spots

- Kafue Bulk Water Supply Project in Peri- urban cholera hot spots in Lusaka at a cost of \$7 million benefiting over 200,000 people



Mbala water supply and sanitation project at a cost of \$1.0 million benefiting over 80,000 people





WASH Interventions in Cholera Hot Spots



Mantapala Refugee settlement Water supply project



Boreholes hear marked for rehabilitation in Nchelenge district



Sanitation interventions in selected hotspots





WASH Interventions in Cholera Hot Spots

- Kaputa Water Supply Project in Kaputa district at a cost of \$3.0 million benefiting over 30,000 people
- Nchelenge – Chiengwe Water Supply and Sanitation project in Nchelenge and Chiengwe districts at a cost of \$4.0 million benefiting over 100,000 people.
- Mpulungu Water Supply and sanitation project in Mpulungu district at a cost of \$5.5 million benefiting over 90,000 people
- Completed Chongwe water supply project done at \$0.8 million benefiting over 50,000 people.



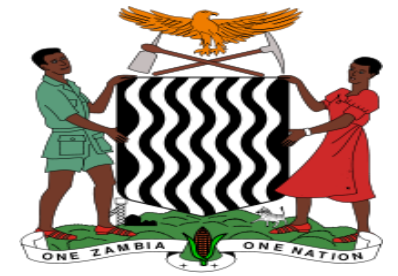
WASH Interventions in Cholera Hot Spots

- Construction of piped water schemes in cost Nchelenge, Mwense, Nsama, Mpulungu at a cost of \$1.0 million
- Drilling of 302 boreholes equipped with hand pumps and rehabilitation of 420 non functional boreholes in chibombo, Kapiri, Shibuyunji, Chiengwe, Chongwe, Mpulungu, Nsama, Mumbwa, Kabwe, Ndola, Kitwe, Lundazi, Nchelenge, Kafue Rufunsa, Chilanga, Mazabuka, Monze, Ngabwe and Sinazongwe at a cost of \$1.5 million benefiting 75,000 people and \$1.0 million benefitting over 105,000 people.



Other Projects being implemented

- Construction of 760 institutional sanitation facilities at a cost of \$1.39 million benefiting over 10,000 people.
- Conducted behavioural change activities (Community led total Sanitation, CLTS), Sanitation Marketing and Hygiene interventions to over 700,000 people at a cost of \$2.16 million.



WASH in Health care facilities in Zambia



Achievements

- Baseline data for WASH in HCFs collected
- The following documents developed for WASH in HCFs:
 - Standards & technical guidelines
 - National Technical Assessment Tool
 - Water Quality monitoring protocol
- Conducted a Water Quality Monitoring Gap Analysis
- Strong collaboration, advocacy & resource mobilization for WASH in HCFs



Achievements

- Water supply and sanitation policy was launched in 2020
- Open Defecation strategy was launched in 2018 and is being implemented
- The Government of Zambia has demonstrated its commitment to achieve the targets set in the MSCEP by financing many WASH interventions in Cholera hot spots.



Challenges

- Risk profile for WASH in the cholera hotspots not conducted
- Inadequate investment in WASH and SWM
- The COVID-19 pandemic has negatively impacted other sectors including WASH and SWM
- Inadequate partner support to WASH & SWM



Recommendations

- Conduct risk assessment for WASH in all cholera hot spots
- Continue with long term investment
- Develop a financing mechanism
- Strengthen partner coordination for upscaling of WASH interventions
- Strengthen and continue resource mobilization through partner mapping



Conclusion

- So far, a total of \$ 32.05 million has been committed and is being utilized for WASH towards the elimination of Cholera in Zambia representing 47.2% of the budgeted amount.
- A total of 1,485,000 people will benefit once the interventions are completed representing 42.42% of the targeted population.



Thank you
