



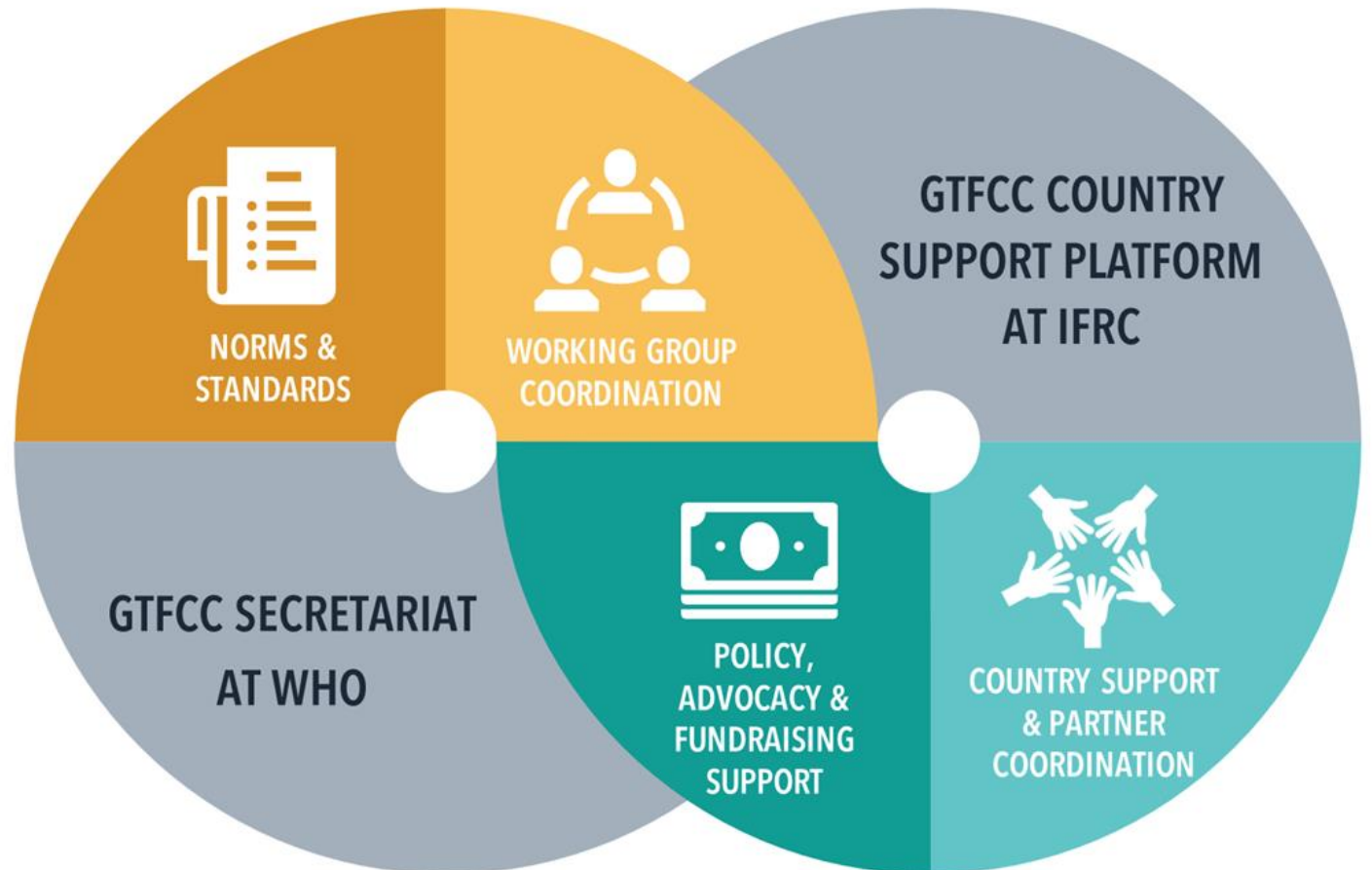
GLOBAL TASK FORCE ON  
**CHOLERA CONTROL**

## Establishment of the Country Support Platform (CSP) on behalf of the GTFCC

Presentation at the 7<sup>th</sup> Annual Meeting of the GTFCC, 20 October 2020

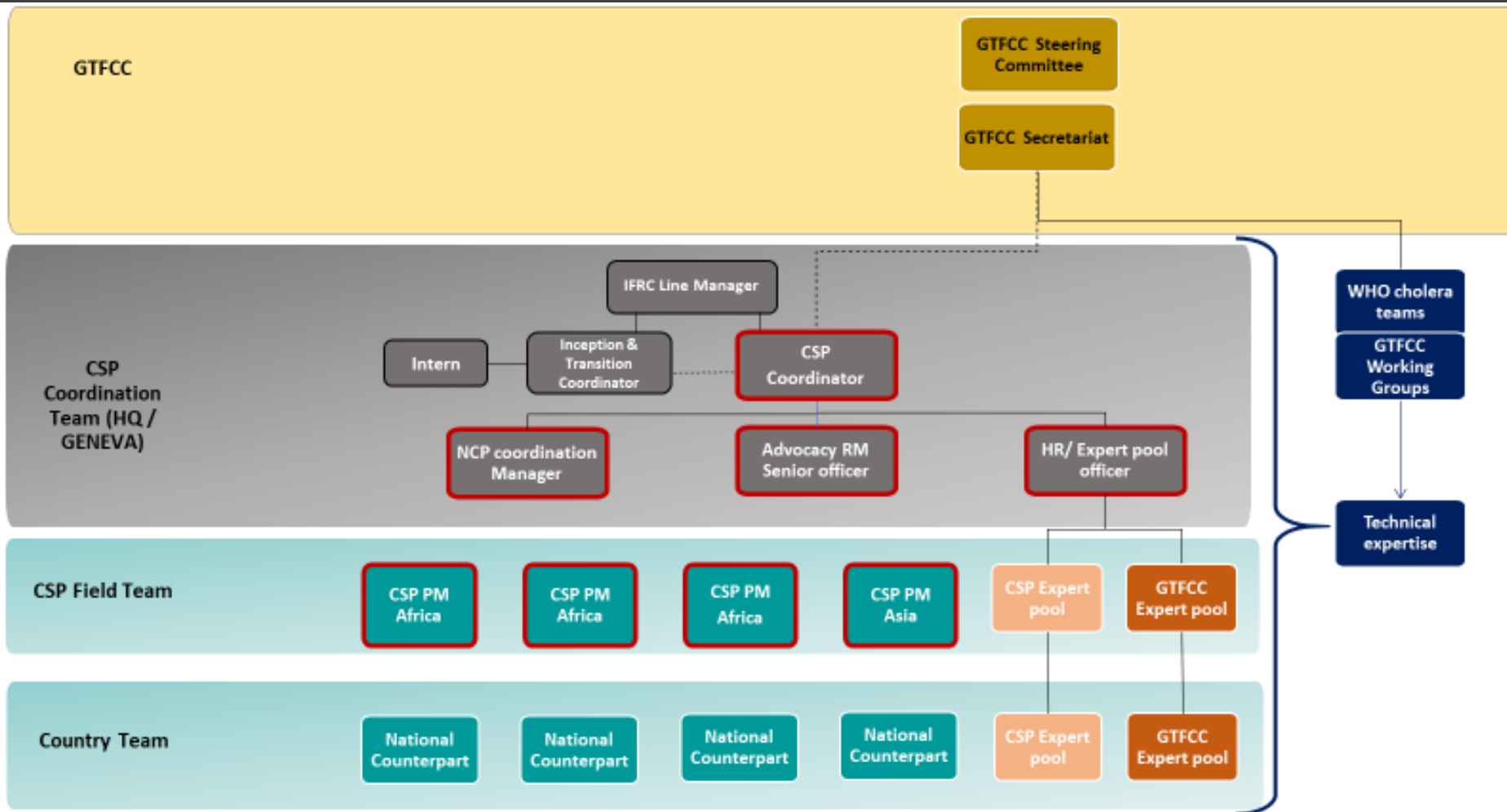
# Background: Country Support Platform (CSP)

- **Cholera affected countries called for additional technical support from the GTFCC** in the development and implementation of their National Control Plans (NCPs).
- At its 6th annual meeting, **the GTFCC endorsed the establishment of Country Support Platform (CSP)** as an operational arm of the GTFCC.





# What is the Country Support Platform (CSP) Function and Structure



- The CSP hosted and operated by the IFRC is an **operational arm of the GTFCC** accountable to the GTFCC subject to a formal agreement between the parties.

- The CSP will be **operated and led by a small team of specialists** mainly positioned at field level, giving direct support to countries or groups of countries.

# What are the objectives of the Country Support Platform ?

*CSP objectives aligned with the GTFCC Global Roadmap to end cholera*

*CSP aims to extend GTFCC support at country level.*

<b>Outcome 1</b>	<ul style="list-style-type: none"><li>• Self-sustaining Multisectoral coordination mechanism established</li><li>• Multi-year, multi-sectoral National Cholera Elimination or Control Plan (NCP) developed with and to align government and national actors, GTFCC partners and key stakeholders towards a shared strategy.</li></ul>
<b>Outcome 2</b>	<ul style="list-style-type: none"><li>• NCP Funded with the support of CSP advocacy and resource mobilization efforts.</li><li>• Other stakeholder and partner resource mobilisation efforts are expected and encouraged.</li></ul>
<b>Outcome 3</b>	<ul style="list-style-type: none"><li>• Provision of both short and longer-term multisectoral technical support and capacity building for formulation, implementation and monitoring of NCP's according to need and demand including effective implementation of OCV campaigns.</li></ul>

# CSP Inception & First Phase (12 Months)

- Recruitment and establishment of the CSP Team and required agreements concluded, inception team hands-over.
- Identification of the initial 4 countries
- Initiate CSP international 'expert pool' or roster
- Establish logical framework and workplan
- Develop and commence implementing Advocacy, Communications and Resource mobilization strategy
- Initiate support on NCP elaboration and implementation
- Provide ad-hoc support to countries experiencing cholera outbreaks & support.





# CSP Extension phase (24 months)

- Supporting 8 new countries with the development of National Cholera Plans (NCPs)
- Focus on resource mobilization for country NCPs, building on previous experience
- Resources mobilization to increase the CSP capacity to provide extended support
- Expanding research, laboratory support, community-based and national surveillance, cholera outbreak preparedness, OCV, both short term and longer-term WASH service provision.
- Provide proof of concept for the CSP operational modalities

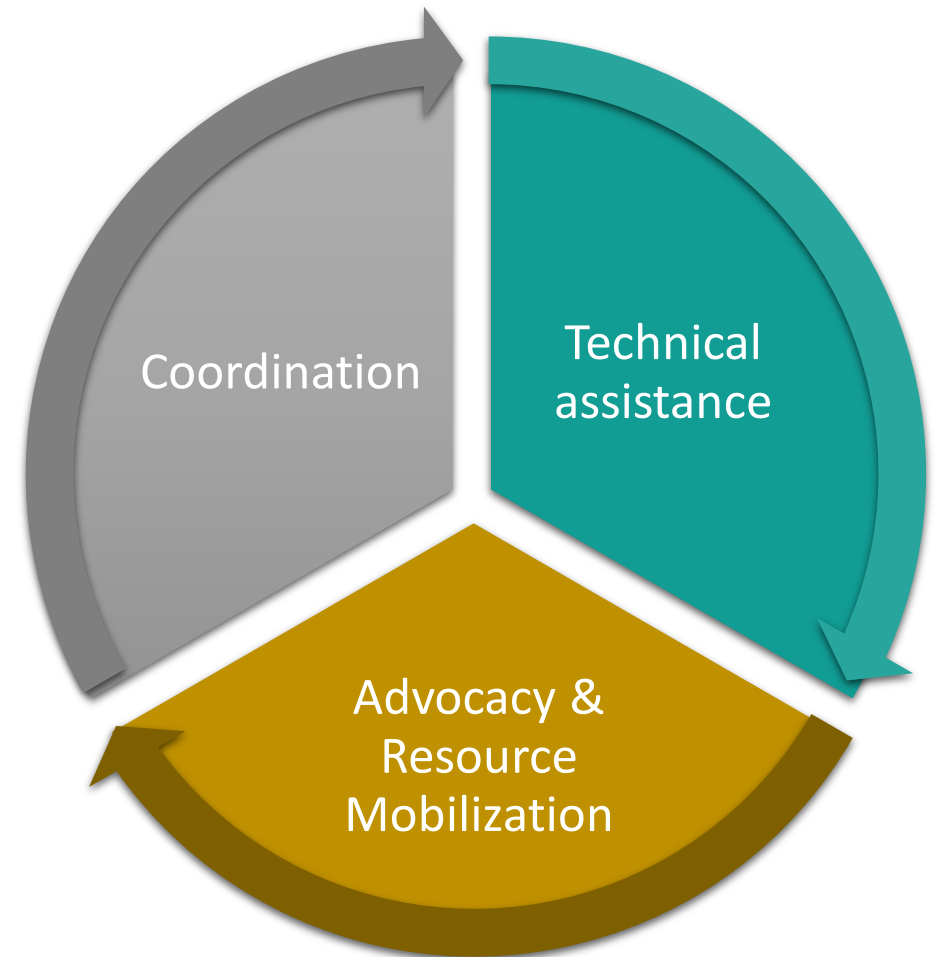


# How will cholera affected countries benefit from the CSP?

Ensure	Ensure that cholera interventions are coherent, evidence based, aligned with the government and GTFCC Roadmap objectives and summarized into a comprehensive National cholera Control Plan (NCP)
Facilitate	Facilitate the coordination of technical assistance at national level from various GTFCC members and / or other stakeholders
Support	Support advocacy and resource mobilization efforts for the implementation of countries' NCPs
Provide	Provide support to the monitoring & evaluation of NCPs, as well as to the implementation of priority research projects
Provide	Provide coordination to GTFCC partners' activities to ensure coherent, optimized, and synergized interventions and adherence to GTFCC approved guidance, standards, and quality assurance across different regions.

# How can GTFCC members, cholera partners and donors help the CSP assist countries to reach cholera elimination in a coordinated way?

- **Coordination:** All cholera partners and donors can help the CSP in supporting national coordination – sharing information on activities and projects implemented in cholera affected countries.
- **Technical assistance:** GTFCC members, donors, can support the CSP with their technical expertise – responding directly to country requests or indirectly through expert loan (skill-based sponsorship or secondment) and/or through the GTFCC – CSP Expert pool
- **Advocacy & Resource Mobilization:** GTFCC members and donors may align as one behind the national cholera control plans to assist and support governments engage in cholera elimination in a structured and coordinated way.





# IFRC CSP Inception Team



**Robert S M Fraser (Lead)** *Senior Officer WASH* [Robert.fraser@ifrc.org](mailto:Robert.fraser@ifrc.org)

**Alexandra Machado Soergel (Co-Lead)** *Senior Officer WASH Public Health*  
[alexandra.machado@ifrc.org](mailto:alexandra.machado@ifrc.org)

**As soon as the CSP Team becomes active they will take over from the inception team.**

## **Other IFRC Technical Focal Points:**

Immunization and ICG: Frank MAHONEY [Frank.MAHONEY@ifrc.org](mailto:Frank.MAHONEY@ifrc.org) and Kathleen CLARK  
[Kathleen.CLARK@ifrc.org](mailto:Kathleen.CLARK@ifrc.org)

Epidemiology: Christophe Valingot [christophe.valingot@outlook.com](mailto:christophe.valingot@outlook.com)

Cholera Preparedness and Response: Christopher BREWER [Christopher.BREWER@ifrc.org](mailto:Christopher.BREWER@ifrc.org)

Africa Health Coordination: Adeiza Ben Adinoyi. [adinoyi.adeiza@ifrc.org](mailto:adinoyi.adeiza@ifrc.org)

Asia Health Coordination: John Fleming. [John.fleming@ifrc.org](mailto:John.fleming@ifrc.org)

Africa WASH: Noor Pwani [noor.pwani@ifrc.org](mailto:noor.pwani@ifrc.org)

Asia WASH: Ludovic Arnout [ludovic.arnout@ifrc.org](mailto:ludovic.arnout@ifrc.org)



# Thank you

Together we can  
**#endcholera**



GLOBAL TASK FORCE ON  
**CHOLERA CONTROL**