

# UNICEF'S Global Review of WASH Rapid Response Teams in Outbreak Settings

5<sup>th</sup> November 2018

GTFCC Case Management WG Meeting

WASH in Emergencies (WiE)

Tim Grieve, Senior WASH  
Advisor

Monica Ramos, Consultant

unicef   
for every child



©UNICEF

## *Why is this important?*

- Increased use of Rapid Response Teams (RRTs) in recent outbreaks
- Better understand and document different types of RRTs in different country settings
- Recognised research and evidence-based knowledge gap
- Targeted WASH intervention (household cordon sanitaire, community 'shield' activities)

## ***How did we do the review?***

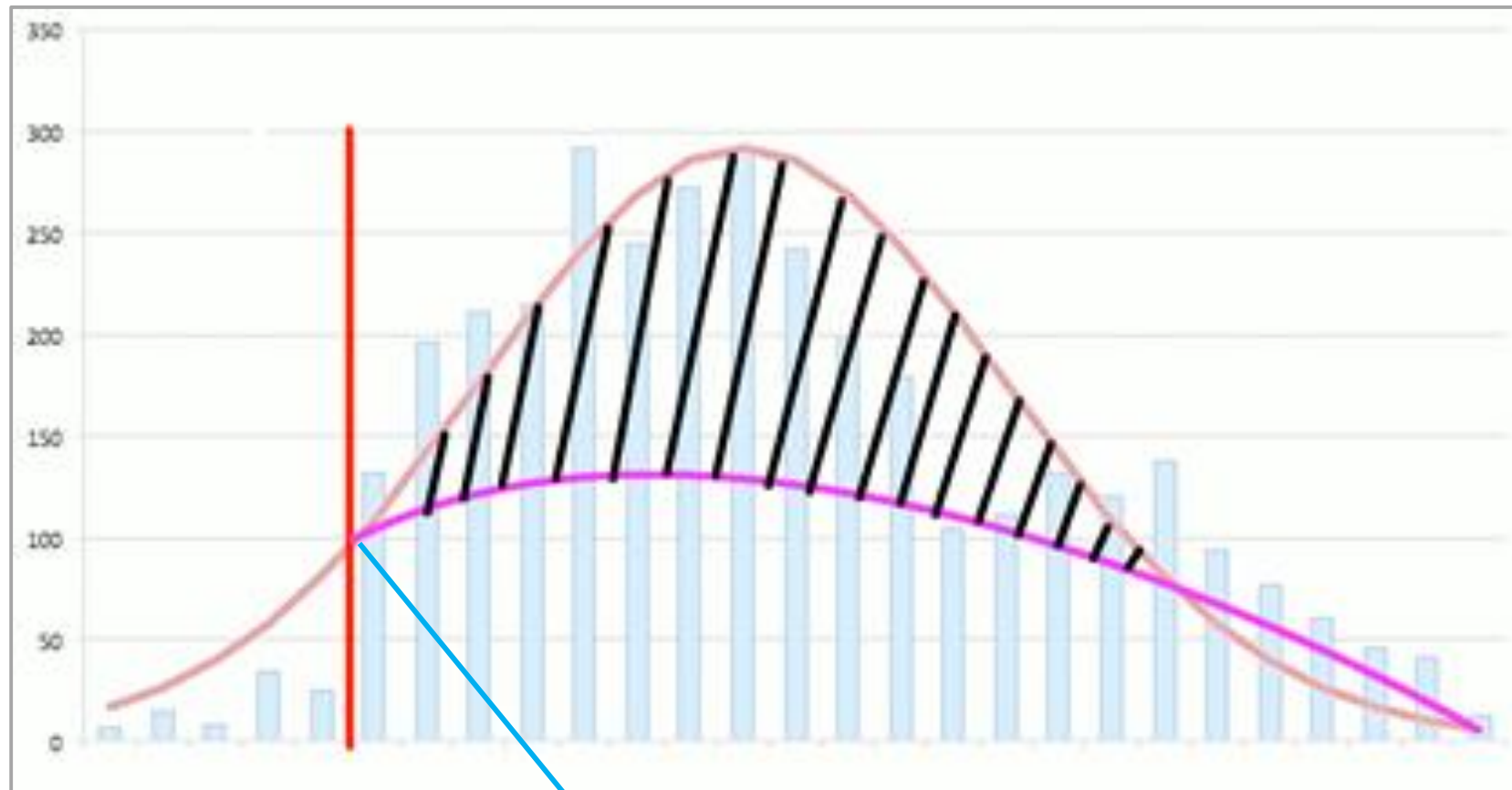
Secondary data review and key  
informant interviews

Comparative analysis of operational  
and performance aspects

Operational recommendations on  
replicating RRT model in outbreak  
settings

*Why do we need targeted responses?*

## EPI CURVE



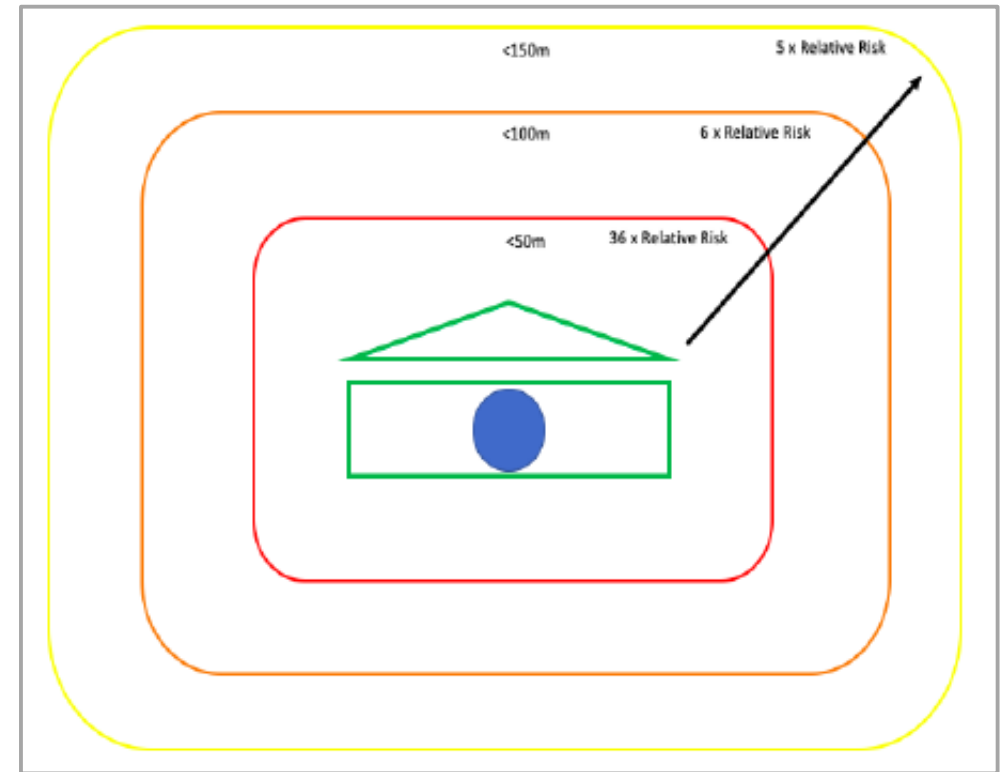
Darcy, J. et al. (2018)

Early interventions can reduce the rate of cholera incidences

## What are the key factors?

# SPATIAL AND TEMPORAL

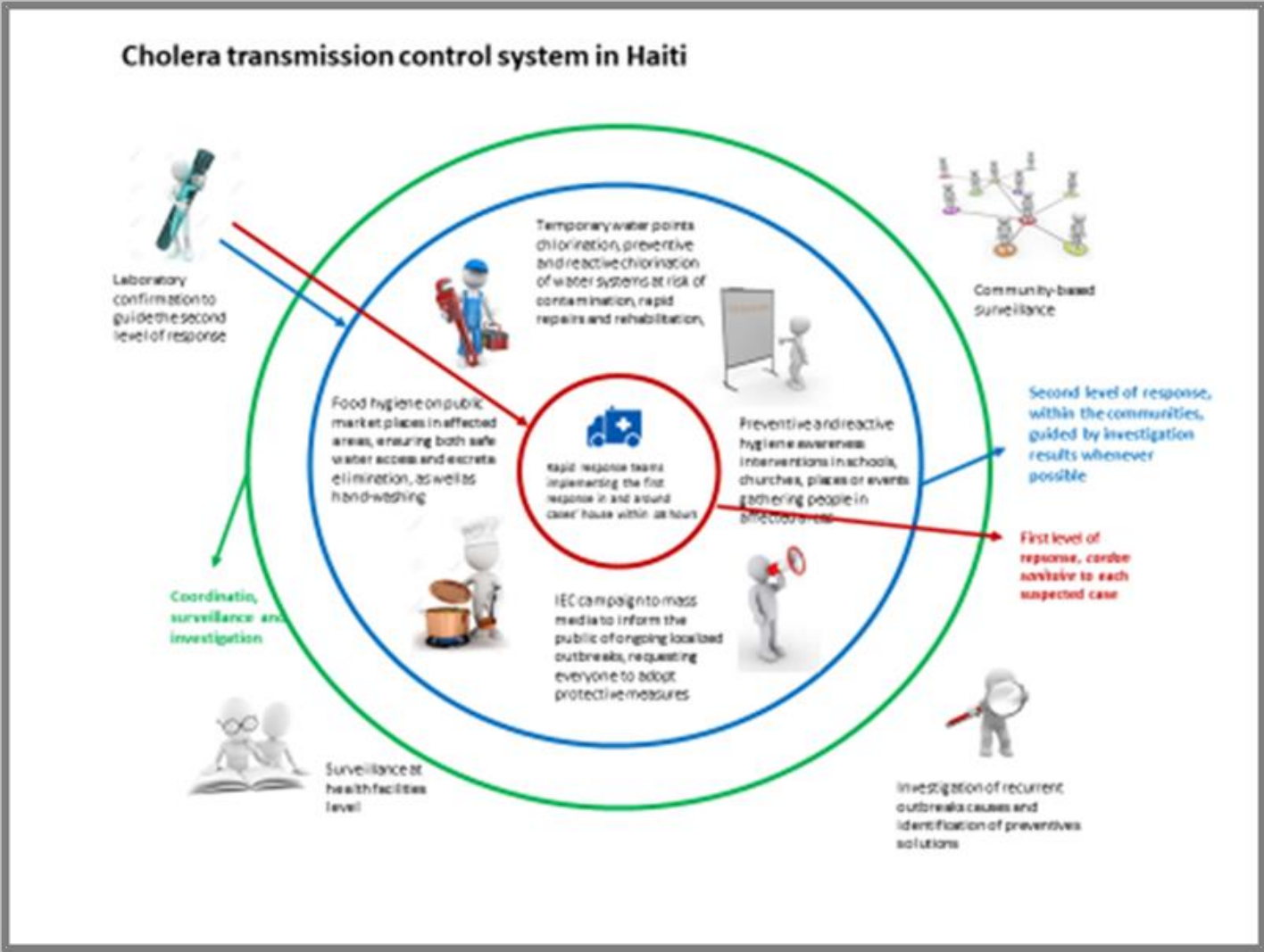
- 36 times risk within 50m (in first 3 days)
- 6 times risk within 51 – 100m (in first 3 days)
- 5 times risk within 101 – 150m (in first 3 days)
- > 2 relative risk within 150 m (after 23 days)



Debes, A.K. et al. (2016) and Azman, A. et al. (2018)

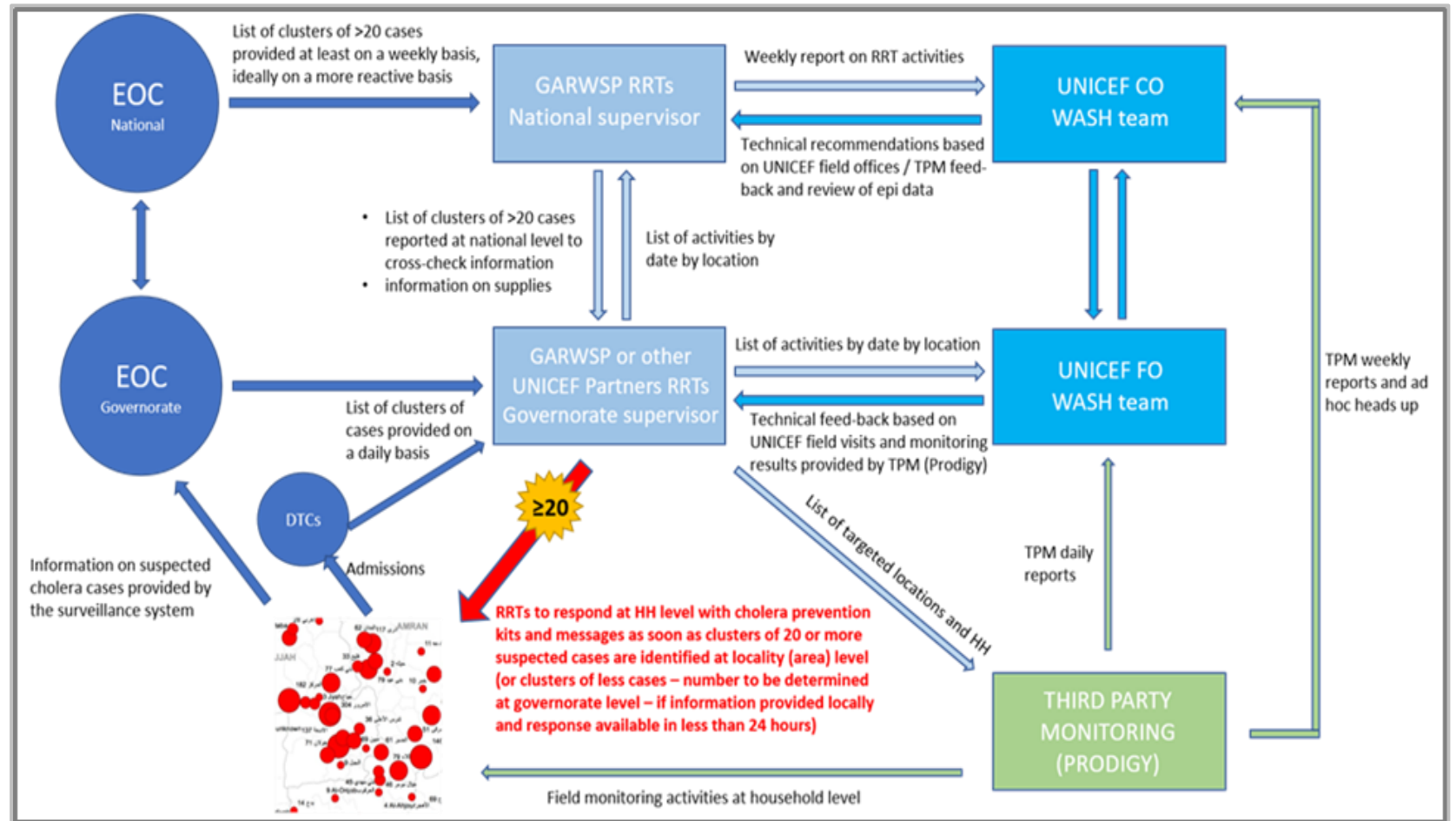
# HAITI

How does it work?



# How does it work?

# YEMEN





*What are the main differences?*

## HAITI AND YEMEN

- Type of teams
- Team composition
- Alert triggering system
- Response criteria
- Response time





*What do we  
now know?*

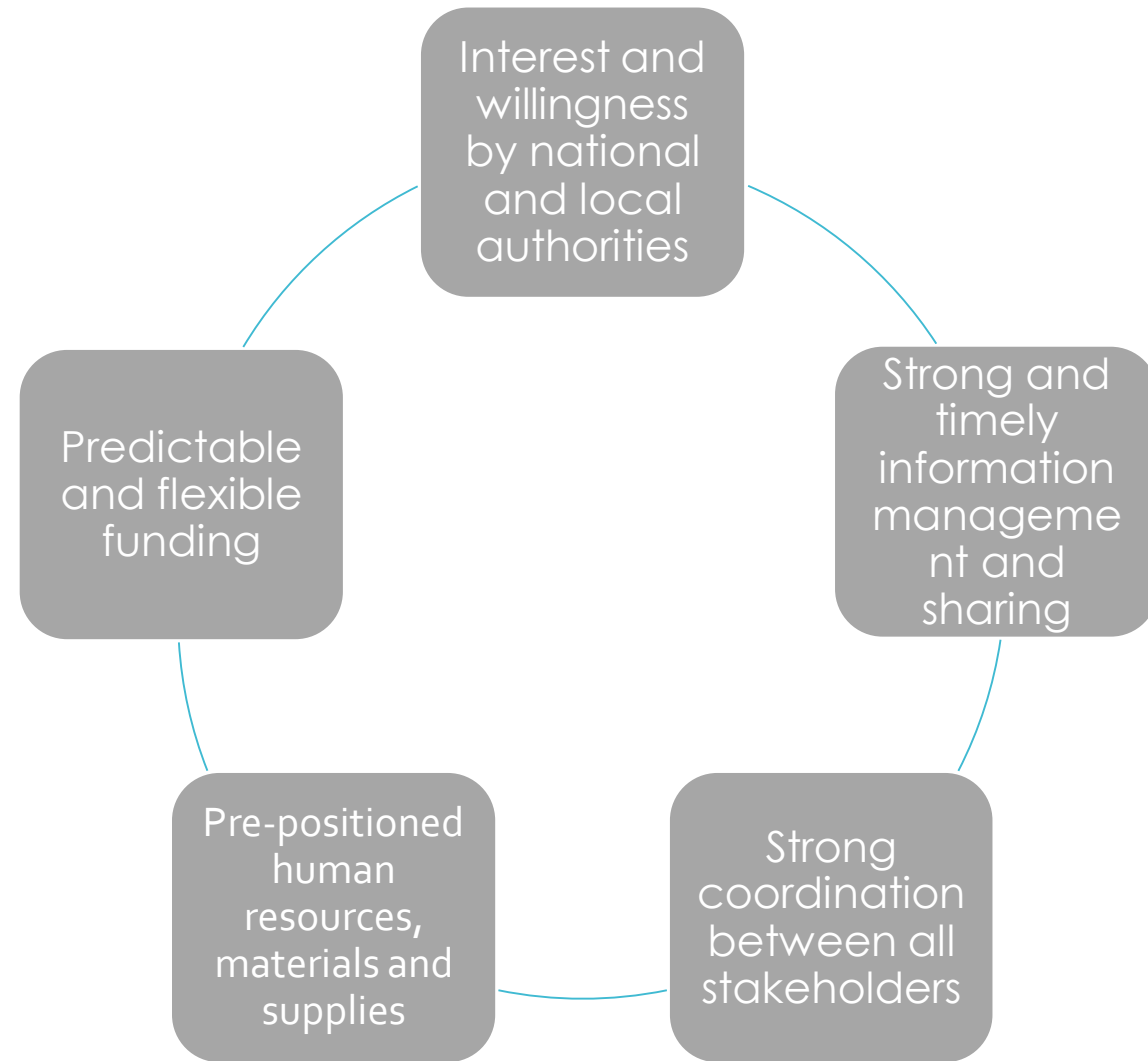
## HAITI AND YEMEN

- Challenges
- Best practices
- Capitalisation and lessons learned
- Timely, predictable and coordinated responses



*What is needed  
for replication?*

# ENABLING ENVIRONMENT



## *What can we conclude about RRTs?*

- Early establishment is key
- Play a critical role in 'slowing down' cholera incidences
- Reliable epi data needed
- Part of a comprehensive alert response strategy
- Sustainable when incorporated into national level programmes



*What are the knowledge gaps on RRTs?*

## KEY QUESTIONS

- Optimal model
- WASH package
- Response criteria and time
- Effectiveness and impact



# THANK YOU FOR YOUR PARTICIPATION

Interactive Discussion and Q & A

unicef   
for every child



©UNICEF