



GLOBAL TASK FORCE ON
CHOLERA CONTROL

CASE MANAGEMENT WG – NEXT STEPS

IPC

WASH in CTC technical note – to be finalised and published on the GTFCC website – **by end of the year:**

- Include prioritization: essential vs ideal – Adapt the guidance to field conditions

USE OF ANTIBIOTICS

Research priorities:

Targeted chemoprophylaxis and benefits on transmission vs risk of development of antimicrobial resistance

Use in mild and non severe cases

Recommendation to the Lab WG:

Need to reinforce countries capacity to perform antimicrobial sensitivity testing

Also need to improve information sharing on strains already analysed to know resistance patterns (and information on performing labs)

SAM

Dr Tahmeed to provide comments on the 2 pager protocol – to then be circulated to the Case Management WG for input and comments **with the draft meeting report**

Objective is to publish the 2 pager on the GTFCC website

Additional research needed – including additional field research

PREGNANCY

Evidence limited to provide specific guidance – issue still needs to be raised by the GTFCC

Next steps: interim guidance/technical note to be developed with key recommendations – **draft by the next GTFCC annual meeting**

YELLOW BOOK

Linkages with Lab section (samples, RDT...)

Need to include info on pregnancy

Objective is to finalize document by end of the year

Agreement on job aids by WG – to then adjust design and test in field – **follow up in Q1 2019**

Once finalised should be included with cholera kits

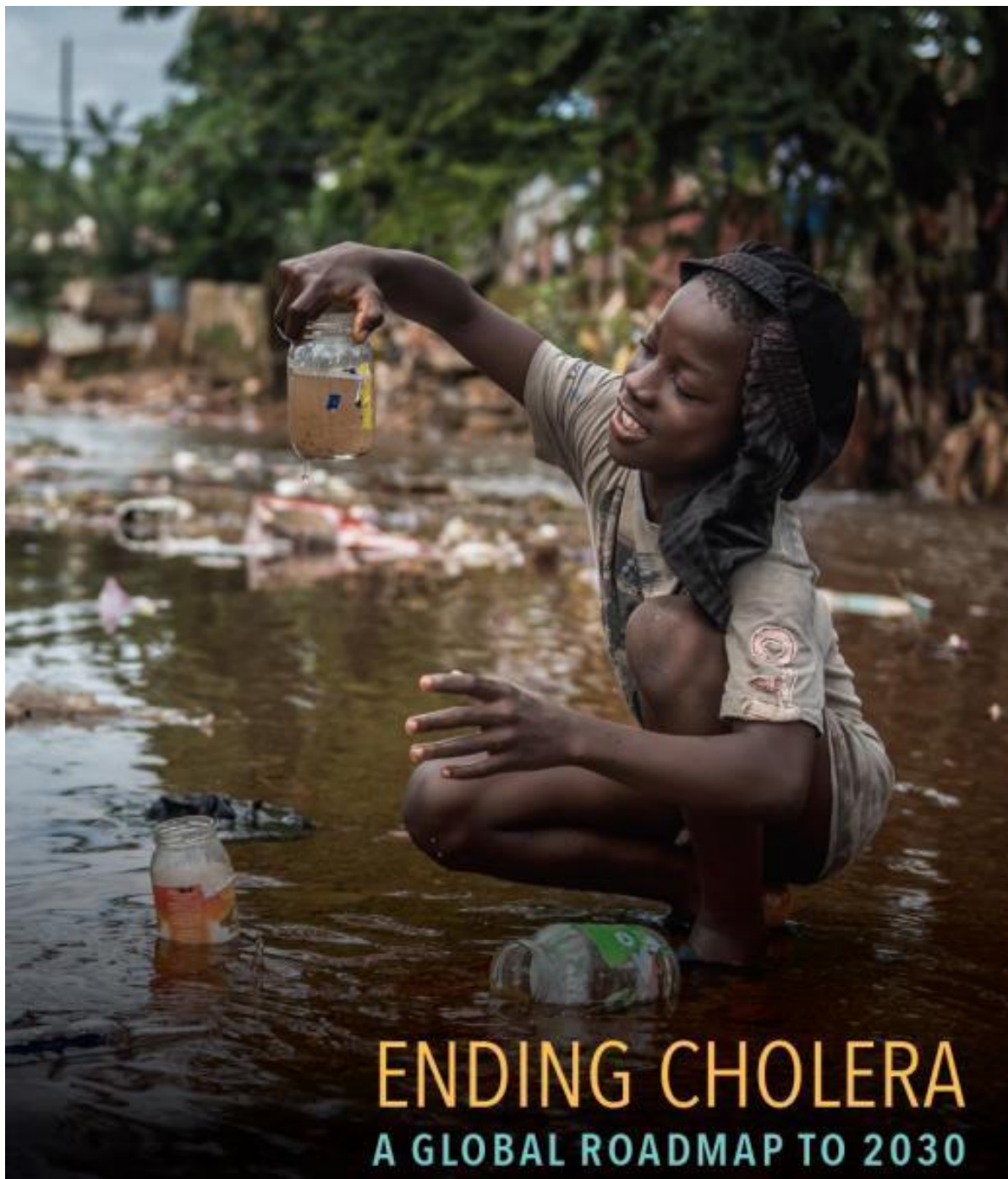
RESEARCH PRIORITIES

Already identified in the GTFCC Research agenda:

- Rehydration protocol for cholera with SAM
- Targeted chemoprophylaxis and benefits on transmission vs risk of development of antimicrobial resistance

Additional research priorities:

- Community based treatment – feasibility and impact on the evolution of the outbreak
- Impact of RRTs on the evolution of outbreaks (cross sectoral)



THANK YOU!

Together, we can
#EndCholera

Contact

GTFCCsecretariat@who.int



GLOBAL TASK FORCE ON
CHOLERA CONTROL