



GLOBAL TASK FORCE ON
CHOLERA CONTROL

GTFCC WORKPLAN

GTFCC Annual meeting, June 2019

COUNTRY SUPPORT - COORDINATION

- Finalize hotspot mapping in all countries
- Finalize the Cholera App
- Health promotion and social mobilization
- Establish a global database to help monitoring progress and reporting
- Support in-country advocacy

COUNTRY SUPPORT — TECHNICAL

- Support the development of NCPs
- Establish the mechanism of review and validation of NCPs
 - establish a reporting / M&E mechanism
- Enhance surveillance capacity in countries

TECHNICAL GUIDANCE

- Develop SOPs / guidance on Outbreak Investigation Teams and Rapid Response Teams
- Finalize the guidelines on how to conduct a Situational Analysis, including a simple tool to support the analysis
- Develop a technical note on WASH measures to implement during OCV campaigns and identification of WASH best practices
- Develop a process to define and certify cholera elimination
- Develop a Training Framework for WASH
- Continue providing training and guidance to countries on the use of RDTs, sample, shipment etc.

GTFCC GOVERNANCE

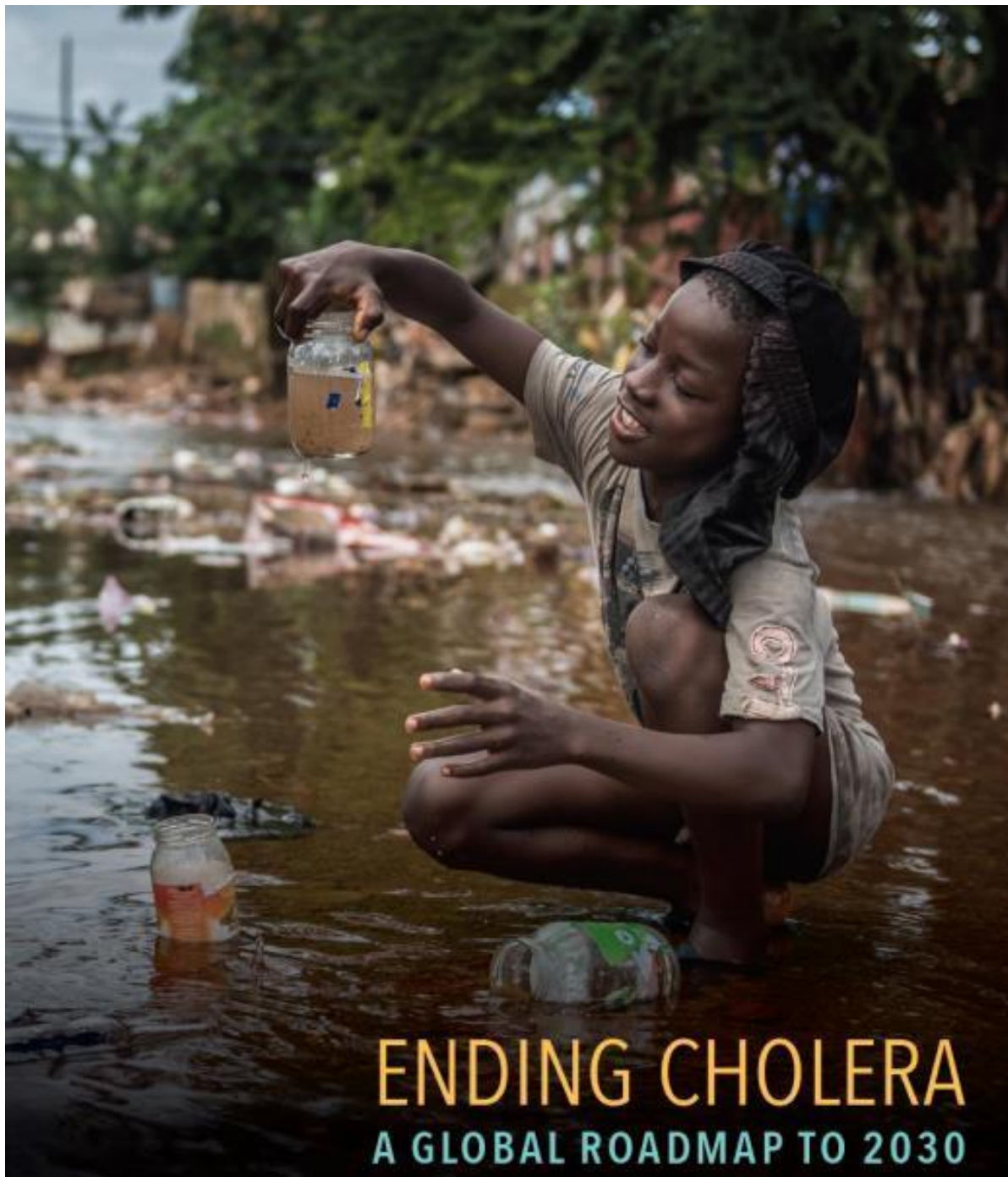
- Develop a workplan for the Steering Committee
- Establish the Country Support Platform – integrate financial support from donors and in-kind support from partners
- Appoint GTFCC coordinators in countries / at sub-regional level

RESEARCH

- Develop coordinated research agenda, ensuring alignment of countries roadmap needs and research activities in all domains
- Support implementation in countries

ADVOCACY / ENGAGEMENT

- Use existing global fora as advocacy platform
- Continue advocating for resources to implement NCPs on all aspects
- Develop advocacy workplan and timeline
- Advocate for OCV supply matching countries needs
- Document success stories and best practices – this includes an open call to all GTFCC partners for stories that the GTFCC can highlight on its website/in information materials



THANK YOU!

**Together, we can
#EndCholera**

Contact

GTFCCsecretariat@who.int



GLOBAL TASK FORCE ON
CHOLERA CONTROL