

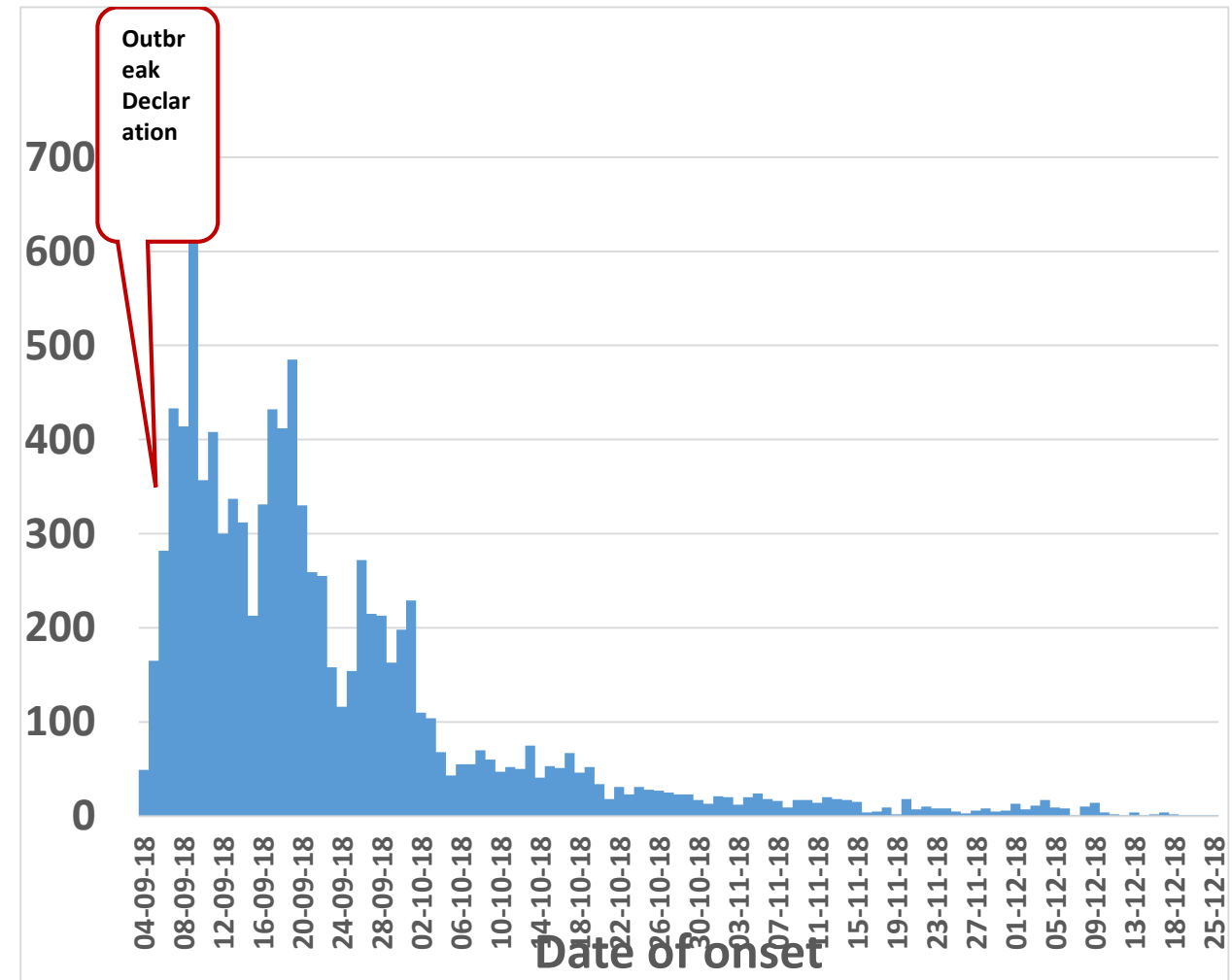
Zimbabwe Progress on Cholera Control and Elimination

Dr Isaac Phiri
MOH Zimbabwe

Overview of Cholera Outbreaks in Zimbabwe 2018/2019

- Total cholera cases reported in Zimbabwe (2018/2019)
 - Suspected - 10,726,
 - Confirmed- 313
- Total Deaths - 69 CFR 0.64
- 23/63 Districts affected with a total population of 6million people (at risk)
- Risk Factors being:
 - Dilapidated water and sewer reticulation system
 - Poor hygiene and sanitation
 - Huge peri-urban unplanned settlements with huge population grown
 - Internal population displacement for purposes of illegal gold mining
 - Inadequate investment in safe water

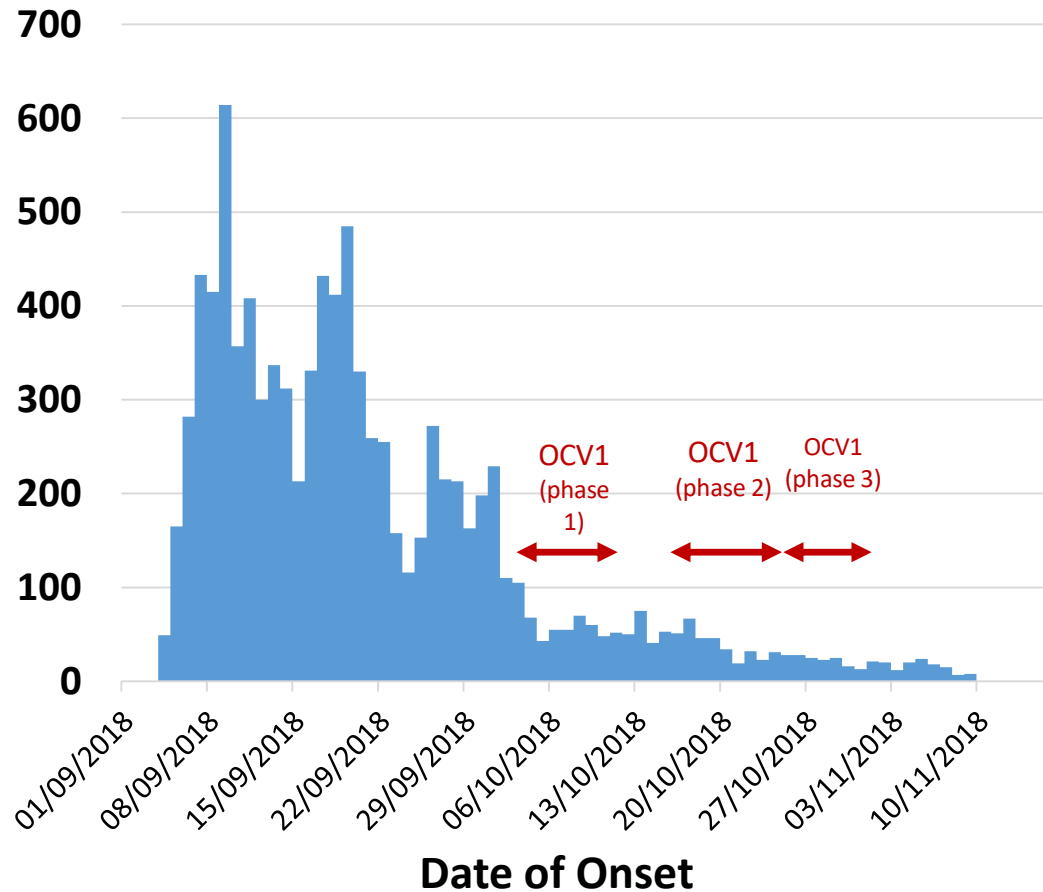
Epicurve cumulative cases in Zimbabwe 2018/2019



Outbreak Control and Mitigation Measures

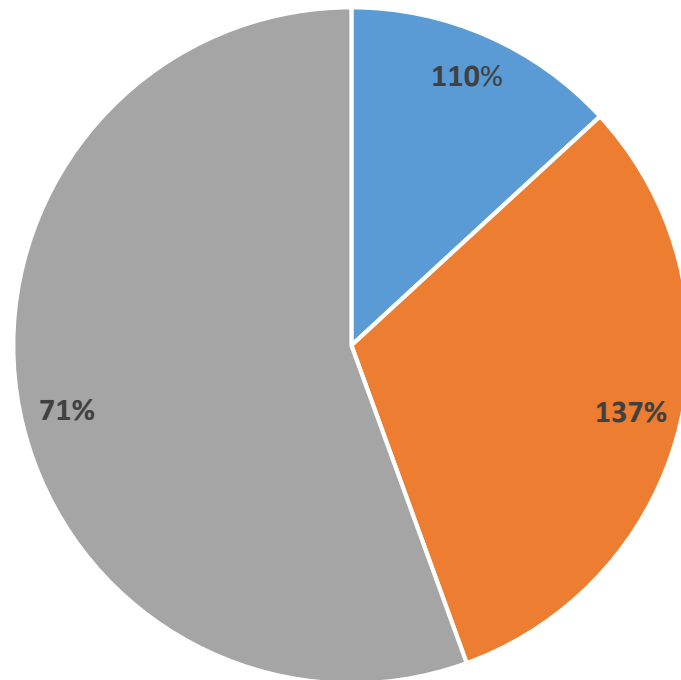
- Declaration of a Health Emergency and formation of an Inter-Ministerial Committee
- Activation of IACCH with several technical working groups
- PHEOC activation with team from WHO Afro
- Mobilization of huge workforce from other districts and provinces for case management and Wash activities with several CTCs being established
- Provision of safe water in the affected suburbs
- Revamping of water and sewer reticulation system with a prominent telecom company working with Ministry Local Gvt and City authorities
- National Taskforce for cholera for cholera elimination
- Development of Cholera Operation Plan
- Plans underway for cholera elimination Plan with WHO and Higherlife Foundation
- Deployment of OCV to contain the outbreak in Harare City and areas affected by Cyclone Idai

Weekly Epicurve and Timing of OCV Deployment



- Fifteen (15) suburbs with high risk of cholera in Harare were targeted
- Target population 1,512,642
- Vaccinated – 1,297,890 (86%) 1st dose 22- 28 November 2018
- 2nd dose – 96% (157,730 pple more) in March – April 2019)
- 1-4 Age groups and 4-14 surpassed targets
- More women than men were vaccinated
- Only 12 adverse events recorded
- Special groups taken care of (prisons, HCW, works and sanitation workers)

OCV Vaccination Coverage by Age Groups in Harare



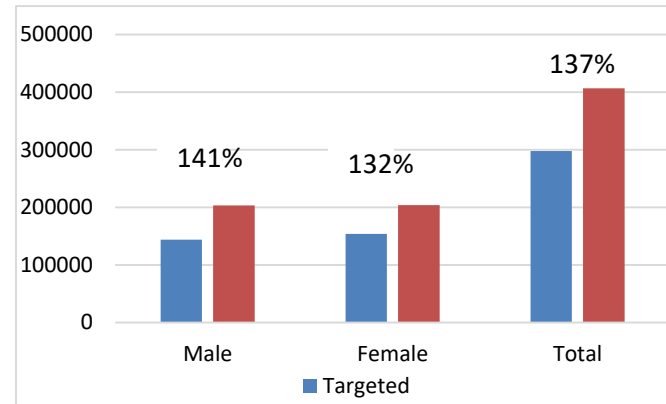
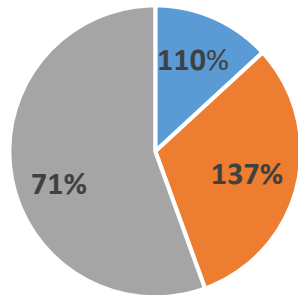
	1-4 yrs	5-14 yrs	> 15 yrs
Administered	170 739	406 338	720 813

GTFCC Support

- Technical and financial support in the development of National Cholera Plan and subsequent funding of the plan
- Technical assistance in development of PHEOC for coordination of health emergencies taking cholera as the case study
- OCV campaign in selected hotspots in the country

- END

OCV Coverages various age groups



	1-4 yrs	5-14 yrs	> 15 yrs
Administered	170 739	406 338	720 813

