

# Update on Current Activities

Justin Lessler

**with**

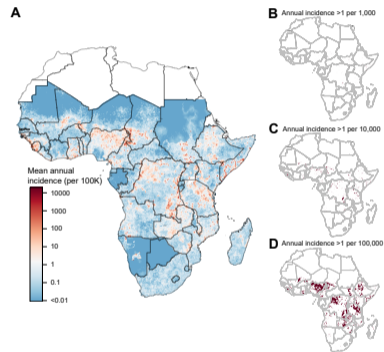
*Andrew Azman, Elizabeth Lee, Sonia Hegde, Shirlee Wohl, Heather McKay, Stephen Lauer and many others*

GTFCC Annual Meeting :: 3 June 2019



- 1 Mapping Cholera
- 2 Cholera Genomics
- 3 Case Studies
- 4 Using Cross-Sectional Serology to Track Transmission and to Identifying Priority Intervention Areas

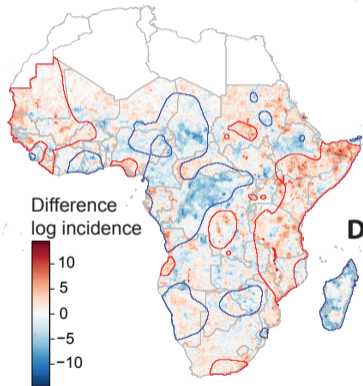
- Development and curation of global cholera data
- Updated estimates of global cholera
- Impact and cost-effectiveness of global OCV investments
- Maps of seasonality and inter-annual variability of transmission
- Leveraging different types of data
- Review and summarisation of cholera outbreak characteristics
- New interface for data access, entry and database



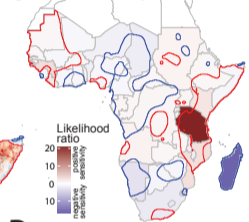


# Risk Factors for Cholera Incidence: From Weather to WASH

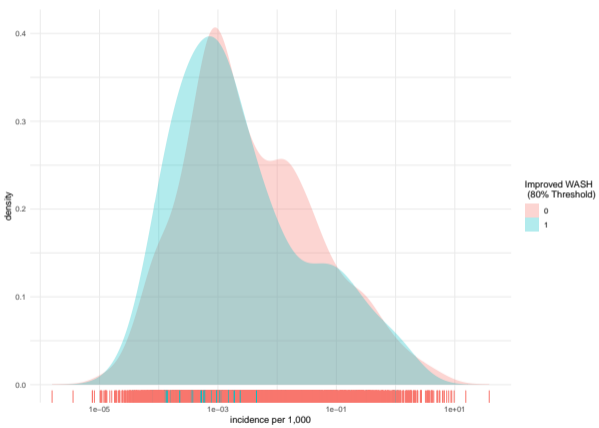
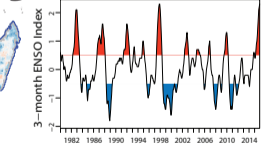
**B**



**C**

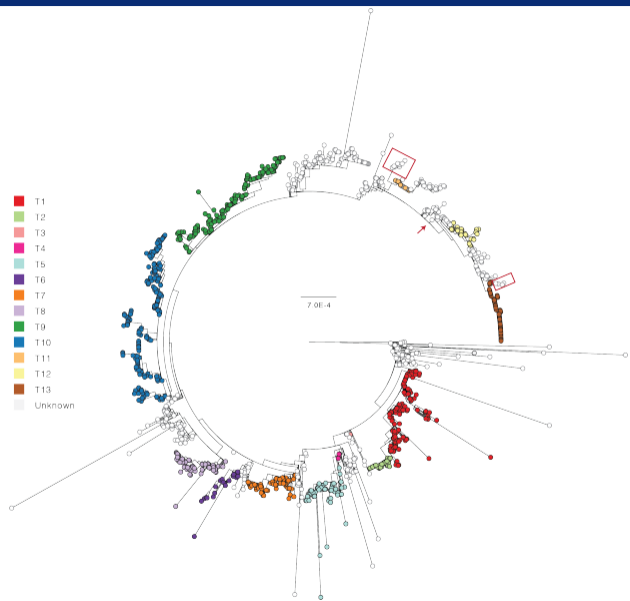


**D**

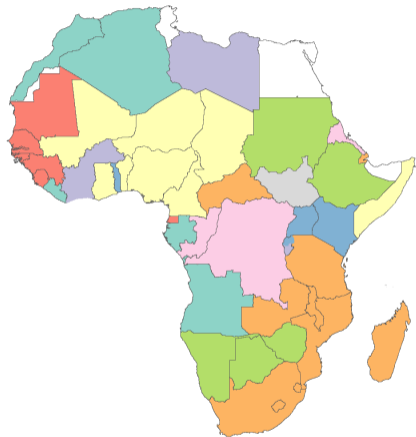




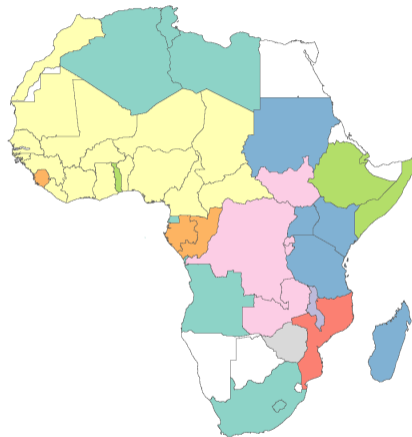
- 1 Mapping Cholera
- 2 Cholera Genomics**
- 3 Case Studies
- 4 Using Cross-Sectional Serology to Track Transmission and to Identifying Priority Intervention Areas



Incidence-based Clusters



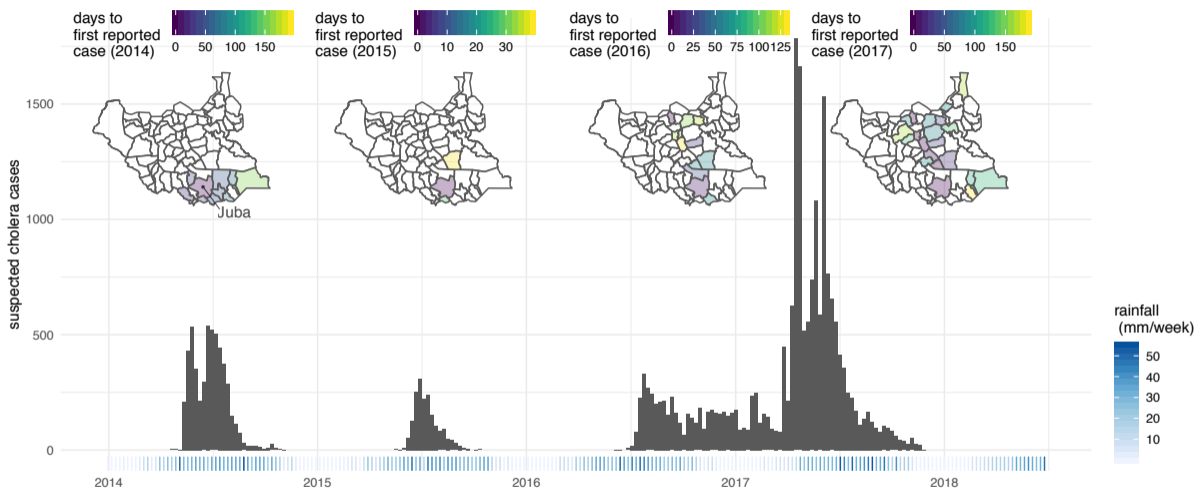
Lineage-based Clusters

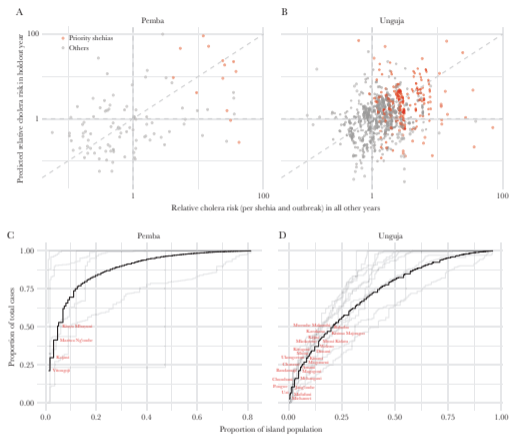
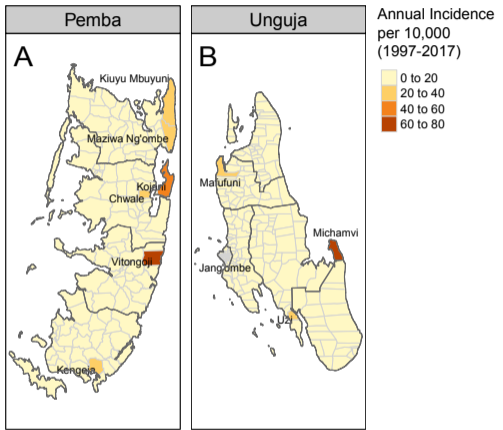




- 1 Mapping Cholera
- 2 Cholera Genomics
- 3 Case Studies**
- 4 Using Cross-Sectional Serology to Track Transmission and to Identifying Priority Intervention Areas

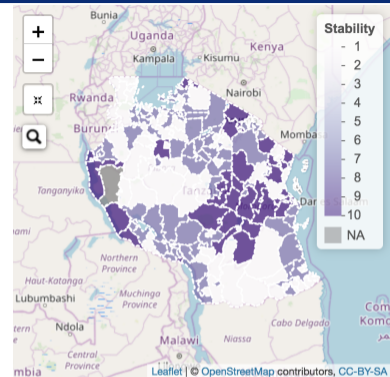
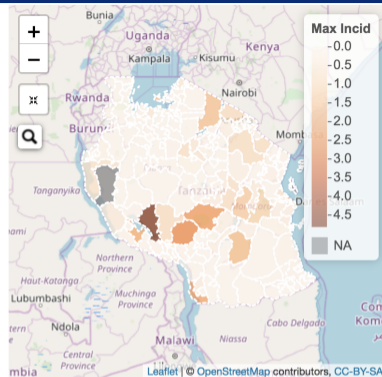
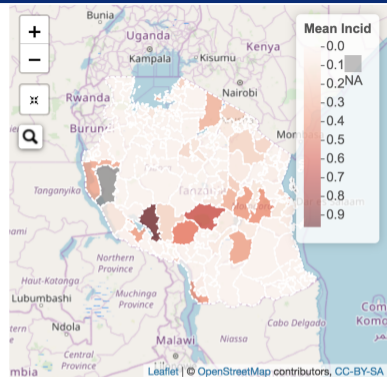






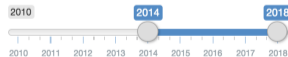
Bi et al, 2018, JID

# Identifying Priority Areas in Tanzania



Set criteria for identifying priority intervention districts:

Choose the period of interest:

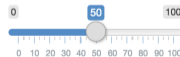


Define the Stability criterion:

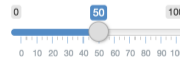
At least one case

Set relative weights for the three criteria under consideration in this prioritization process:

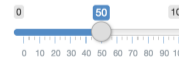
Mean Annual Incidence:



Max. Annual Incidence:

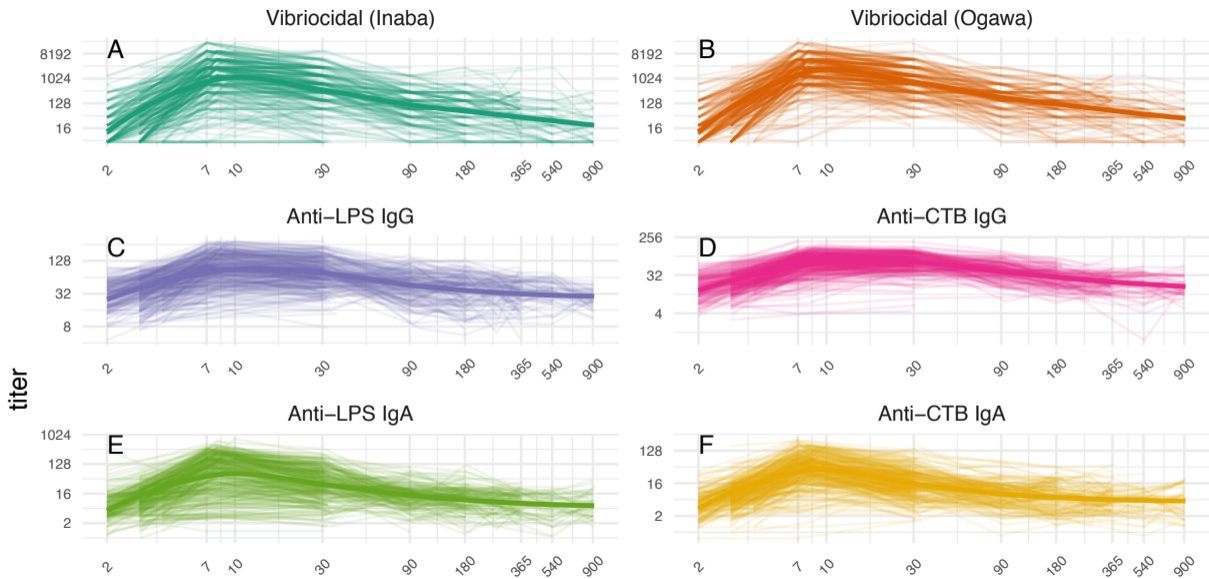


Stability of Burden:

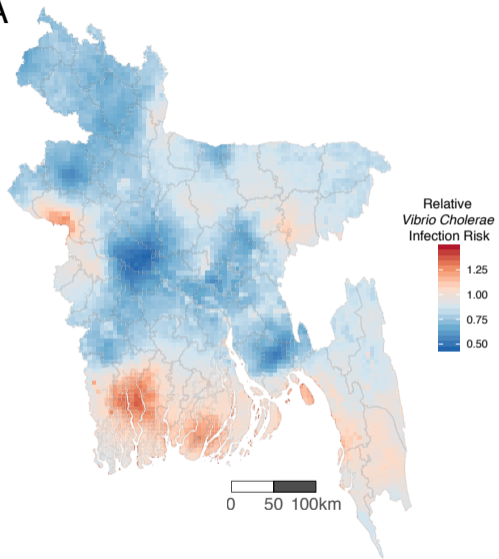




- 1 Mapping Cholera
- 2 Cholera Genomics
- 3 Case Studies
- 4 Using Cross-Sectional Serology to Track Transmission and to Identifying Priority Intervention Areas**



A



B

