



Presentation DRC GTFCC annual meeting

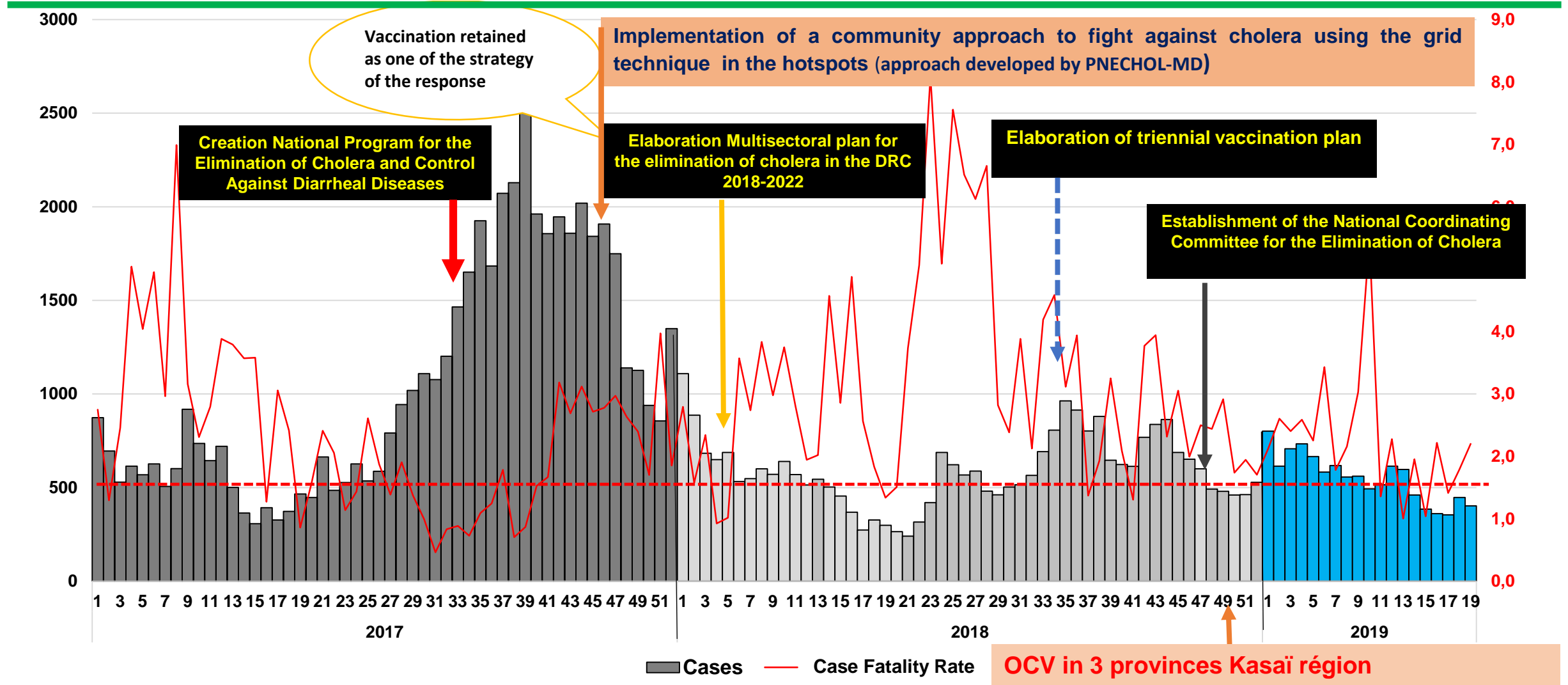
DRC: LARGE SCALE USE OF OCV FOR CHOLERA CONTROL- RESULTS AND PERSPECTIVES

National Program for the Elimination of Cholera and Control Against Diarrheal Diseases



GLOBAL TASK FORCE ON
CHOLERA CONTROL

weekly incidence, cholera cases, case-fatality rate, DRC, week 1,2017 to week 20, 2019 and OVC

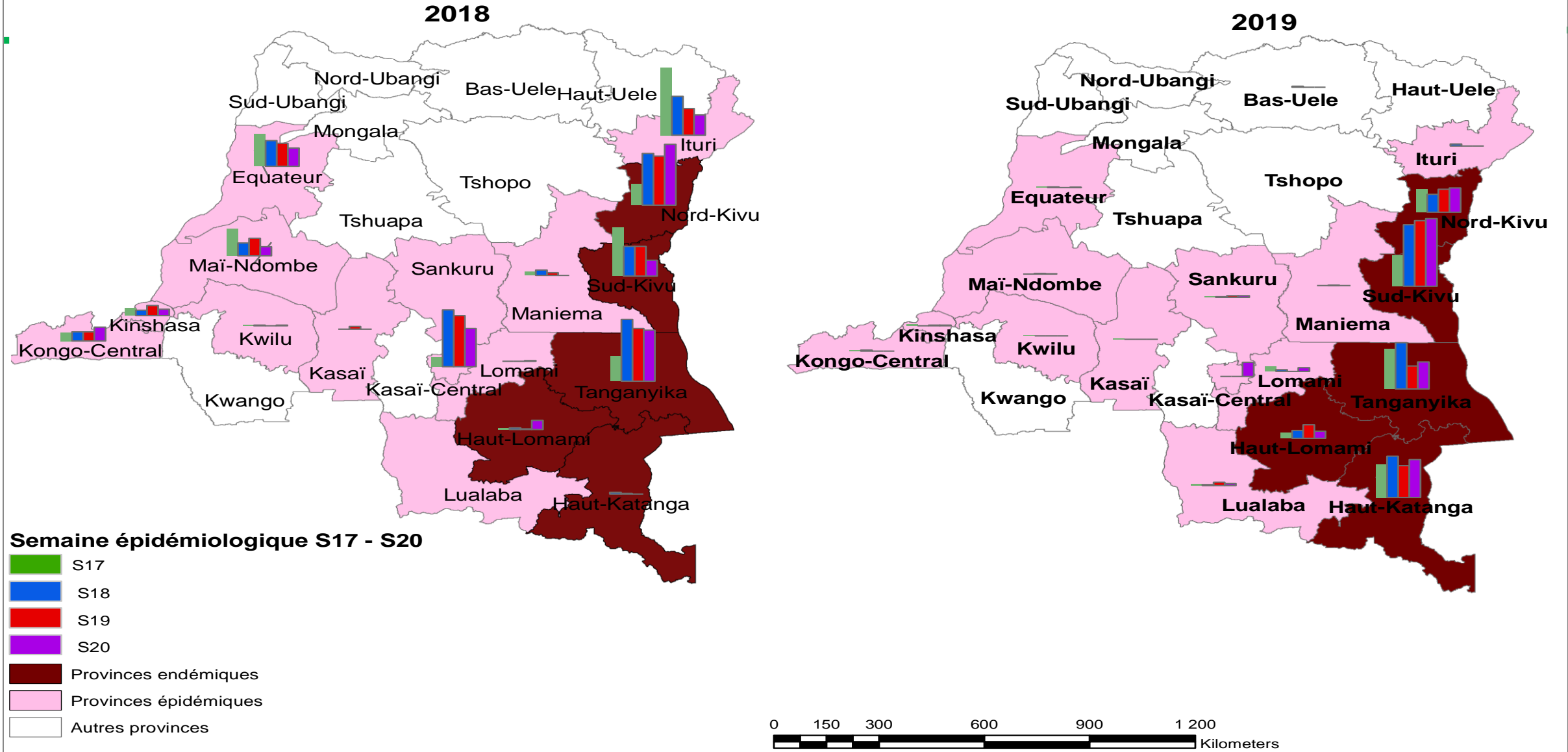


- Week1-52, 2018 : 30768 cases and 927 deaths (3,2% lethality)
- week1 -20,2019: 10928 cases and 245 deaths (attack rate 2,2%)

- Since 6 weeks lower weekly incidence 500 cases
- Higher case fatality rate 1%

Weekly evolution of cholera in DRC from week 17 to 20 of 2019 compare to 2018

Evolution hebdomadaire de cas de choléra par province en 2018 et 2019 (semaines 17 à 20)



OCV Results obtained

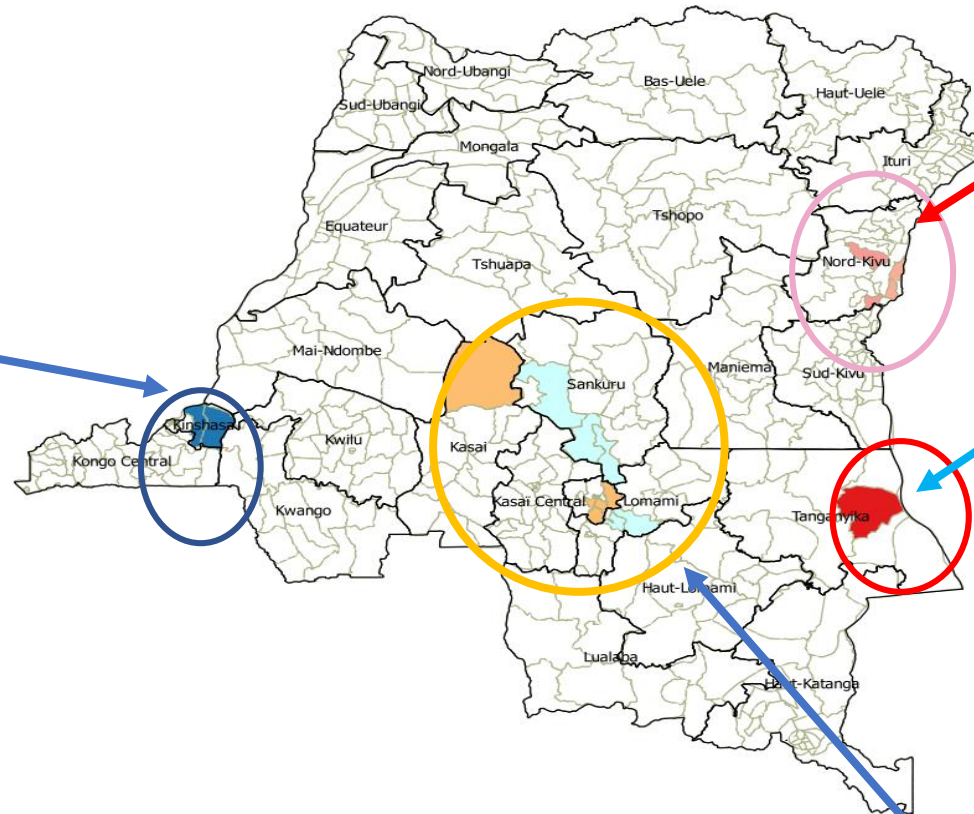
DRC is in its fourth OCV campaign

Kinshasa

2. OCV campaign conducted
September & November 2016

355,183 people vaccinated
CV : 94,6%

5 Health Zones
14 Health areas



Nord-Kivu **In progress**

Target 835,182 people
7 Health Zones
31 Health areas

Tanganyika

1. Campaign completed: **July 2014**
38.242 vaccinated people **CV 73,4%**
1 Health zone (Kalemie)
2 Health areas

Espace Kasai

3. Campaign realized in **December 2018**

1,224,331 people vaccinated
CV 99.1%
15 Health Zones
91 Health areas

impact: long period with few cases in the vaccinated areas.

Acceptance OCV: difficulty of acceptance at the beginning by the various experts and authority of the Ministry but very accepted by the population.

Starting the OCV: often late

Challenges: logistics and very large target to be vaccinated.

The support that would be expected from the GTFCC

- Access to the OCV stockpile
- Implementation of the OCV targeting the already defined hotspot by the PMSEC

Urgence	Phase	Province	Population des aires proposées	Eligible	Besoin OCV	Période proposée pour la campagne
Urgence 1	1	Kasaï, Kasaï Oriental et Sankuru	1,280,681	1,235,972	2,471,944	Novembre-Décembre 2018
	2	Equateur, Kinshasa et Maïndombe	5323,084	511,776	1,023,552	Février 2019
Urgence 2	3	Sud Kivu (Minova, Nundu et Kadutu)	828,141	799,156	1,598,312	Mars 2019
Urgence 3	4	Sud Kivu (Fizi, Katana et Uvira) et Tanganyika	1,454,584	1,403,674	2,807,347	Mai 2019
	5	Ituri (Tchomia) et Nord Kivu (Goma, Karisimbi ¹ et Kirotshe)	1,067,917	1,030,540	2,061,080	Juillet 2019
Urgence 4	6	Nord Kivu (Masisi et Mweso)	575,122	554,993	1,109,985	Septembre 2019
	7	Haut Lomami (Bukama, Kinkondja et Malemba)	686,854	662,814	1,325,628	Avril 2020
TOTAL			6,216,383	6,198,925	12,397,849	

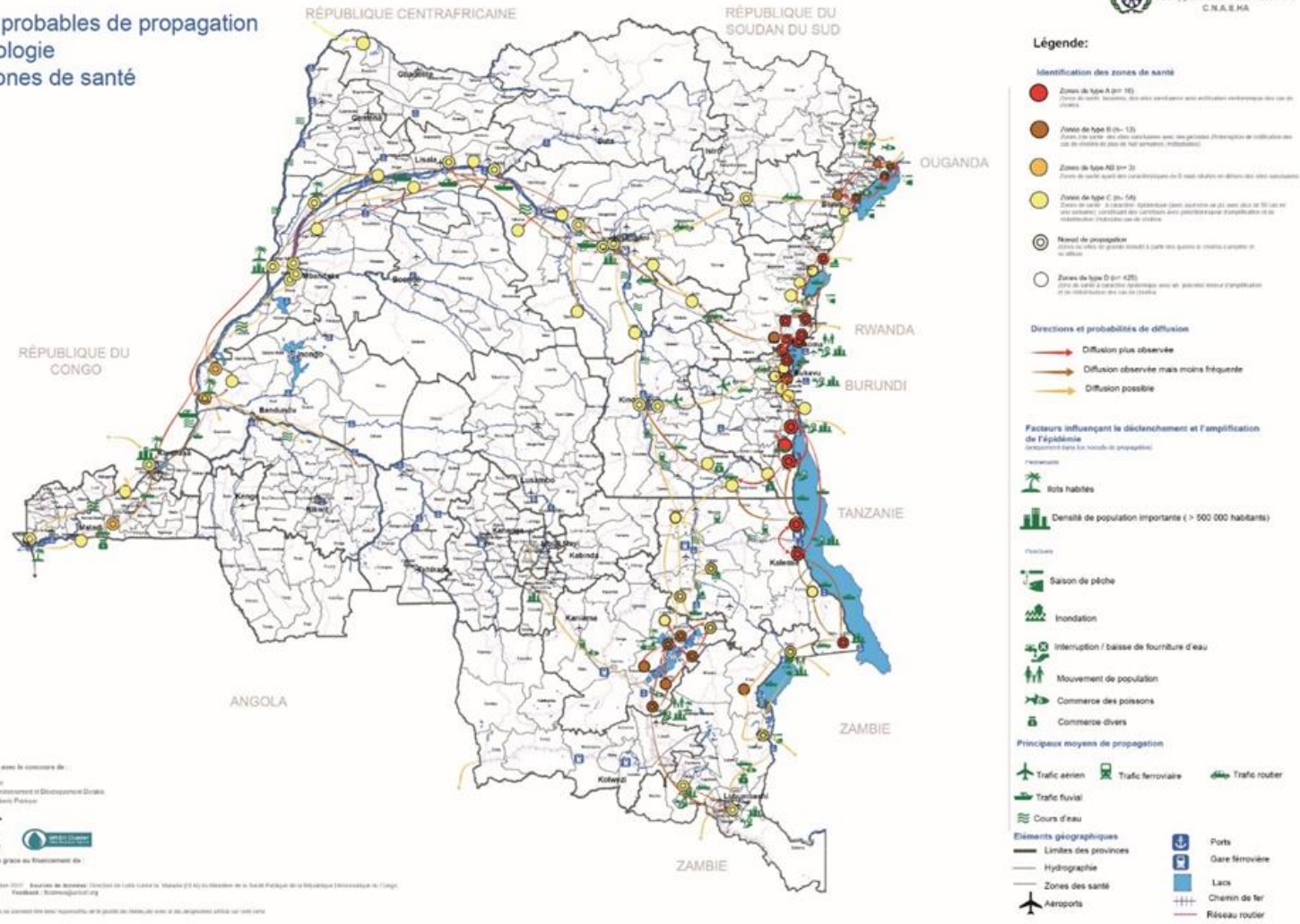
Source: PMSEC 2018-2022

The support that would be expected from the GTFCC

- Support the implementation of the Community wash activities in the Main hotspot
- Support the investigation of new hotspot
- support to the coordination mechanism
- Advocacy in implementation of sustainable WASH investments

Cartographie du choléra en RDC:

Voies probables de propagation et typologie des zones de santé



Source: PMSEC 2018-2022

Thank you

**Together we can
#endcholera**



GLOBAL TASK FORCE ON
CHOLERA CONTROL