



West and Central African Cholera Platform

1. Objective of the platform
2. Reporting and surveillance tools & data
3. Data collection and challenges

Presenter:
Guillaume De Magny / IRD
On behalf of regional cholera platform

Financial partners in 2019:



More information:
www.platformecholera.info

1. What is the regional cholera platform?

Objective:

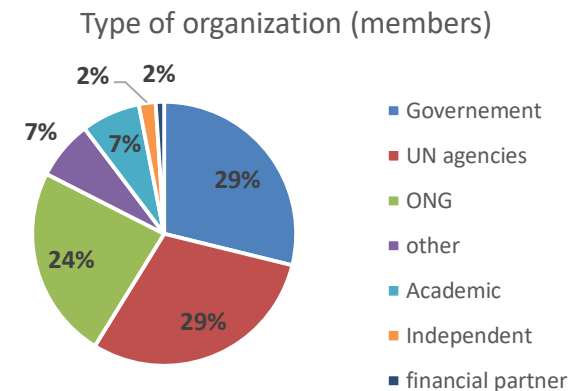
The objective of the cholera platforms is to contribute to GTFCC at the country level through the operationalization of the GTFCC Roadmap.

The main three axes of work of the platforms are:

- Axis 1: Early detection, preparedness and response to contain outbreaks
- Axis 2: Prevention of disease occurrence by targeting multisectoral interventions in cholera hotspots.
- Axis 3: An effective knowledge exchange and information management at regional level.

3 main circles of members:

- Secretariat liaising with partners in countries (UNICEF/WHO)
- Decisional members in Dakar (<20 members)
- Operational members (> 1.000 members in 24 countries) some of them acting as focal point per country



1. Reporting and surveillance tools & data

Cholera Outbreaks in Central and West Africa : 2019 Regional Update - Week 8 CholeraPlatform

Country Name	2019								CFR 2019		Total suspected 2019		2018			
	W1	W2	W3	W4	W5	W6	W7	W8	W7	W8	Cases	Deaths	CFR	W1	W2	
Benin	0	0	0	0	0	0	0	0	-	-	0	0	-	-	-	-
Burkina Faso	0	0	0	0	0	0	0	0	-	-	0	0	-	-	-	-
Cameroon*	1	0	0	0	0	0	0	0	-	-	4	0	0.0%	28	-	-
Central African Republic	0	0	0	0	0	0	0	0	-	-	0	0	-	-	-	-
Chad	0	0	0	0	0	0	0	0	-	-	0	0	-	-	-	-
Congo	0	0	0	0	0	0	0	0	-	-	0	0	-	-	-	-
Congo (RD)	462	193	801	614	707	735	649	582	472	2,11%	2,6%	1415	42	3.0%	56028	-
Cote d'Ivoire*	0	0	0	0	0	1	1	0	0	-	0	0	-	-	24	-
Ghana	0	0	0	0	0	0	0	0	0	-	0	0	-	-	16	-
Guinea*	0	0	0	0	0	0	0	0	0	-	0	0	-	-	1	-
Guinea Bissau	0	0	0	0	0	0	0	0	0	-	0	0	-	-	-	-
Liberia*	0	0	NA	NA	NA	NA	NA	NA	NA	-	14	0	0.0%	150	-	-
Mali	0	0	0	0	0	0	0	0	0	-	0	0	-	-	-	-
Mauritania	0	0	0	0	0	0	0	0	0	-	0	0	-	-	-	-
Niger	0	0	0	0	0	0	0	0	0	-	0	0	-	-	-	-
Nigeria	0	0	1	18	14	18	7	14	33	75	0.0%	180	17	9.4%	3013	-
Senegal	0	0	0	0	0	0	0	0	0	-	0	0	-	-	0	-
Sierra Leone	0	0	0	0	0	0	0	0	0	-	0	0	-	-	11	-
Togo	0	0	0	0	0	0	0	0	0	-	0	0	-	-	-	-
Lake Chad River Basin	7	3	20	14	18	7	14	33	77	-	184	17	9.2%	10,200	-	
Congo River Basin	462	193	801	614	707	735	649	582	590	472	3,415	42	3.0%	56,028	-	
Guinea Gulf and Mano River Basin	0	0	0	0	0	0	0	0	0	0	14	0	0.0%	219	-	
WCAR	450	193	804	634	721	764	657	606	609	649	1,438	59	4.1%	65,537	-	

NA: Not Available. * Liberia, Cameroon, Sierra Leone, Cote d'Ivoire, Guinea surveillance systems are recording and reporting suspected

Highlights:
 D.R.Congo: The regions of Haut Katanga and Haut Lomami are the most affected with respectively 209 cases and 100 cases detected in week 8 even if the epidemic peak seems behind us.
 Nigeria: The state of Bayeala is experiencing a worrying epidemic with 120 cases in 2019 (out of 182 registered nationwide) including 75 cases in week 8 (several confirmed). This state is not used to cholera and there is a real risk of high lethality as well as spreading of the outbreak in Delta of Niger River.
 Cameroon: Few confirmed cholera cases have been newly registered in Northern region of Cameroon on week 9 despite improvements early 2019.
Faits saillants:
 R.D.Congo: Les régions du Haut Katanga et celle de Haut Lomami sont les plus touchées avec respectivement 209 cas et 100 cas détectés en semaine 8 même si le pic épidémique semble être passé.
 Nigeria: L'état de Bayeala connaît une épidémie inquiétante avec 120 cas en 2019 (sur les 182 enregistrés dans l'ensemble du pays) dont 75 cas en semaine 8 (plusieurs confirmés). Cet État n'est pas habitué au choléra et les risques de forte létalité sont élevés ainsi que la propagation au Delta du fleuve Niger.
 Cameroon: Quelques cas confirmés sont de nouveaux enregistrés dans la région du Nord en semaine 9 malgré une amélioration en début d'année.



Source: WHO/UNICEF/Health Emergency and Crisis Response, Regional Cholera Platform for African and Central Africa. The data is retrospectively updated as information is provided. Published on September 30, 2019. www.platformcholera.info - contact@platformcholera.info



Cholera regional update:

- Every 2 weeks
- Page 1: Epidemiological data analyzed
- Page 2: Alert, knowledge sharing, monitoring, technical information...

Real time cholera mapping:

- Updated every 2 weeks
 - New tool soon aligned with East Africa
- Provide overall regional cholera situation with historical data (admin 1 or admin 2 level)

1. Reporting and surveillance tools & data

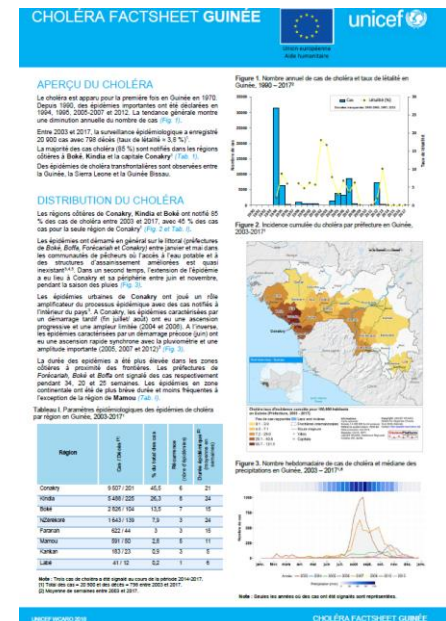
Countries	Data available since	Countries	Data available since
Benin	2009	GNB	1996
Burkina	2005	Mali	2003
Cameroon	2010	Niger	2008
CAR	2012	Nigeria	2010
Chad	2004	Liberia	2013
Congo	2012	Sierra Leone	2012
CIV	2002	Togo	2006
Ghana	1998	Congo DR	2009
Guinea	2003		

Cholera historical data:

- Data base of historical data
- Per week at admin 2 level (in most countries)
- Gap of data: Liberia, Gabon, CAR, Congo
- Others countries are cholera free: Senegal, Gambia, Sao Tome, Cabo Verde, Mauritania, Guinea Eq.

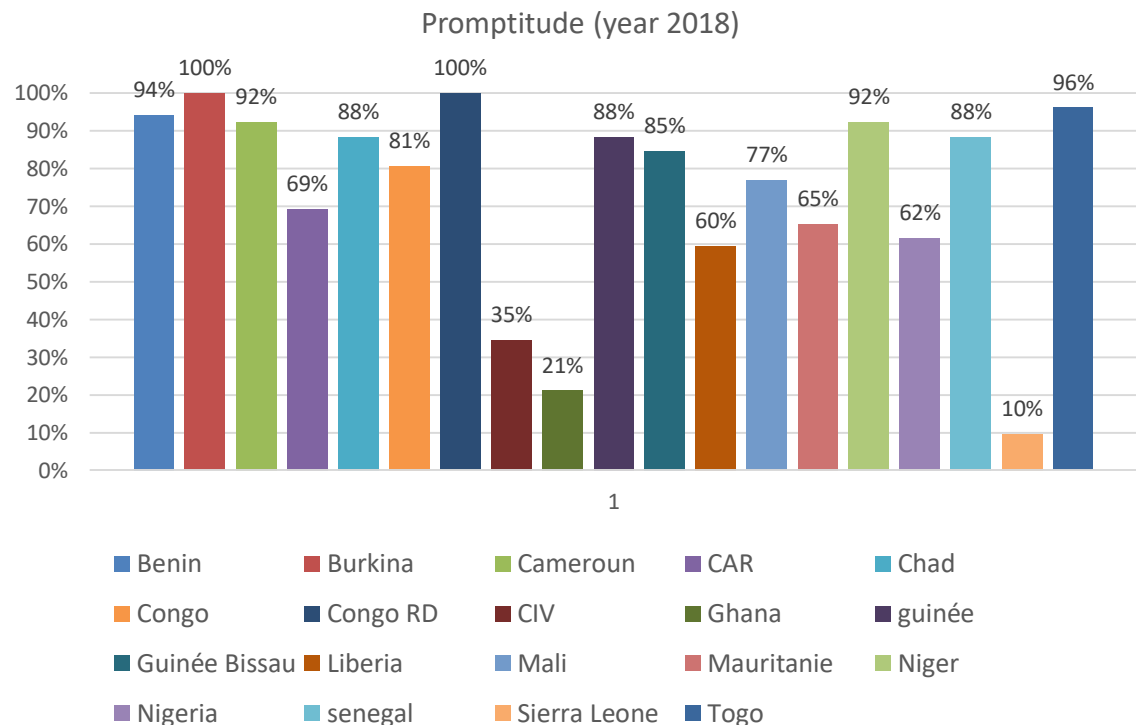
Cholera factsheets:

- Epidemiological analysis at country level based on historical information
- Hotspots mapping
- 12 countries with factsheets
- 2 currently on-going despite lack of data (SL, Liberia)



5. Data collection and challenges

- Data are always coming from MoH of all countries. However, they are sent by countries to regional level through different networks (MoH, WHO or UNICEF)
- Not all countries sharing data timely (refer to graph on promptitude)
- Not all countries sharing data at admin 2 level
- Need friendly network at country level to access data when this should be professional sharing
- Data sharing among members of GTFCC can be a challenge (possibility to create big database?)



Thanks for your attention.

Any questions?

www.platformecholera.info