



CHOLERA SURVEILLANCE IN THE CONTEXT OF INTEGRATED DISEASE SURVEILLANCE AND RESPONSE (IDSR) IN SOUTH SUDAN

GTFCC Meeting for the
Working Groups on
Surveillance
(Epidemiology and
Laboratory) (15th to 17th
March 2019)



Definitions

Surveillance

systematic and organized collection, analysis of data to inform public health action

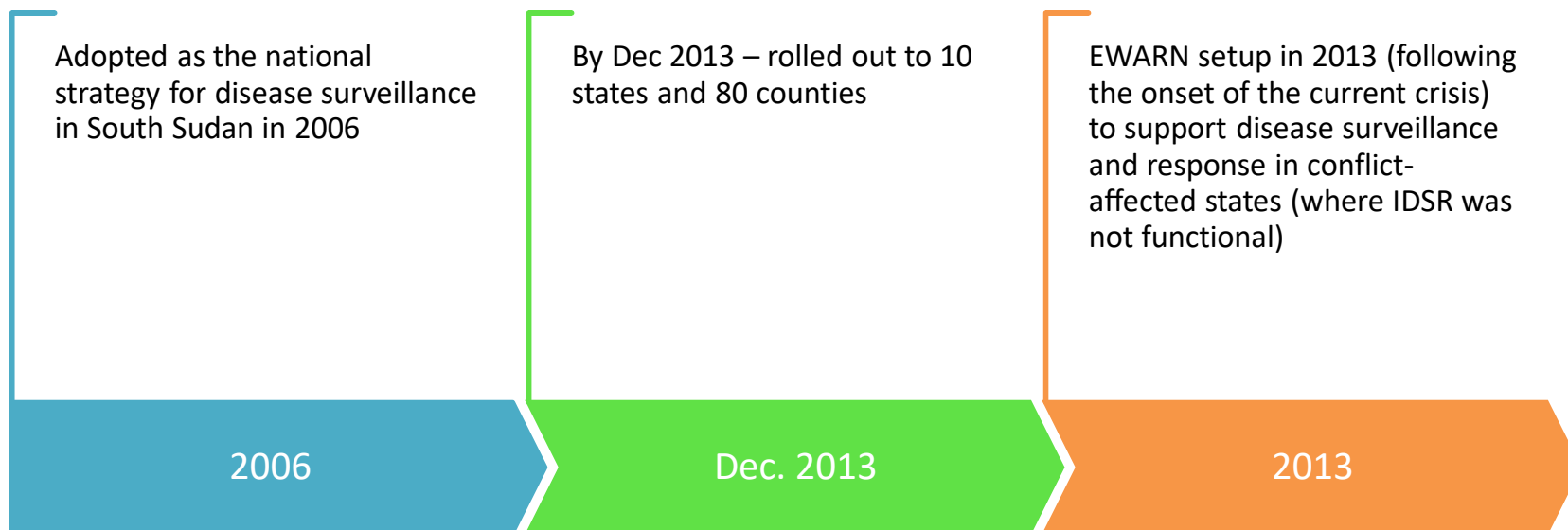
Integrated disease surveillance and response (IDSR)

A strategy of the WHO in the Africa region that fosters integration and optimal use of resources to enhance surveillance, response, and laboratory capacities at the district level

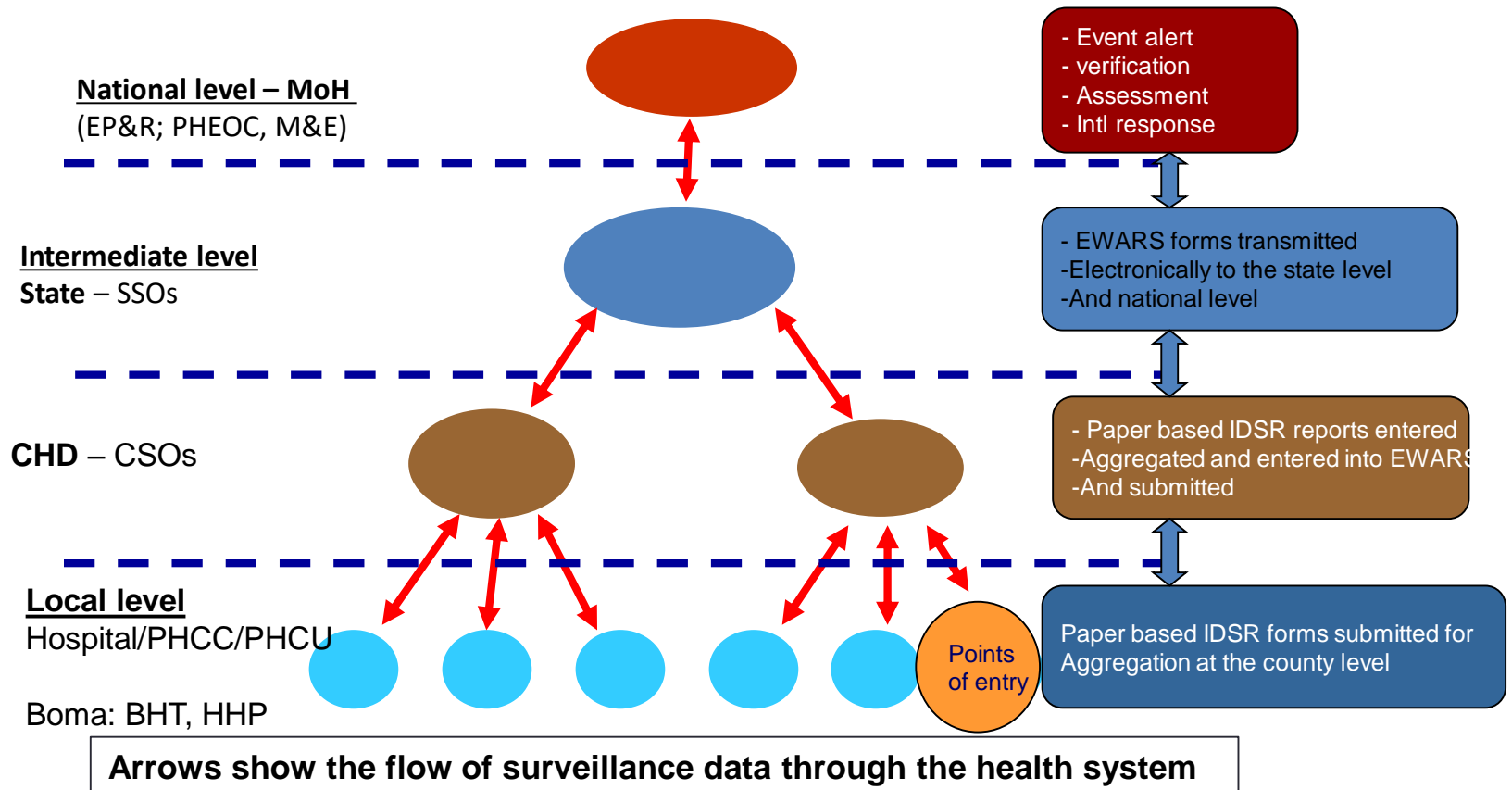
Early Warning Alert and Response Network (EWARN)

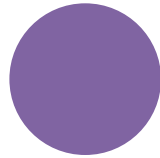
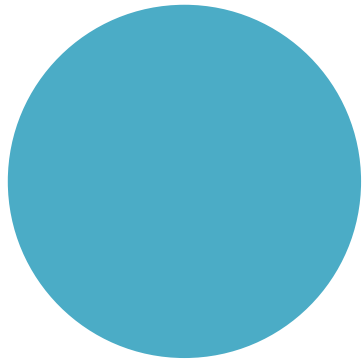
This is an adjunct surveillance system established during humanitarian emergencies to address the disease surveillance and response needs that cannot be addressed by the national disease surveillance system (IDSR)

IDSR in South Sudan



Current Flow of IDSR data



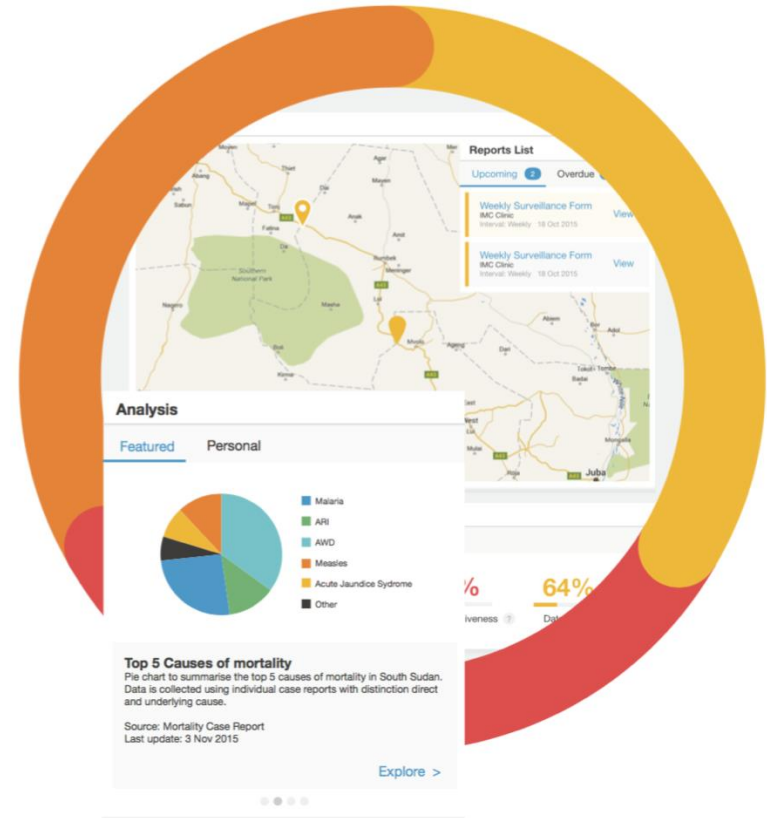


ENHANCING IDSR IN SOUTH SUDAN

Deployment of
web-based mobile
device enabled
EWARS

The EWARS Project

- The **Global EWARS project** is an initiative to strengthen early warning, alert and response in emergencies.
- It supports Ministries of Health and health partners through the provision of **technical support, training and field-based tools**.
- It can be rapidly configured and deployed within **48 hours** of an emergency being declared.
- It is **designed with frontline users in mind**, and built to work in difficult and remote operating environments



Objectives of EWARS

The specific objectives are to:

1. Strengthen the ongoing **collection, analysis and interpretation of public health data**;
2. **Trigger alerts to potential disease outbreaks** at the earliest possible interval and develop strong links with laboratory surveillance to confirm the cause of the outbreak;
3. **Monitor the course of confirmed outbreaks** and direct control measures to stop the outbreak from spreading.

Principles

EWARS supports three main functions of IDSR

1. Surveillance - data collection, transmission, trend analysis
2. Alert - flagging events above threshold
3. Supporting outbreak response - line listing; contact management



Surveillance

Always on the look out



Alert

Quickly raises the alarm



Response

Reacts when you need it most

EWARS Field Support

EWARS in a box

is a kit of **ruggedized, field-ready equipment** needed to establish and manage surveillance or response activities in field settings.



Requires

- Mobile network coverage

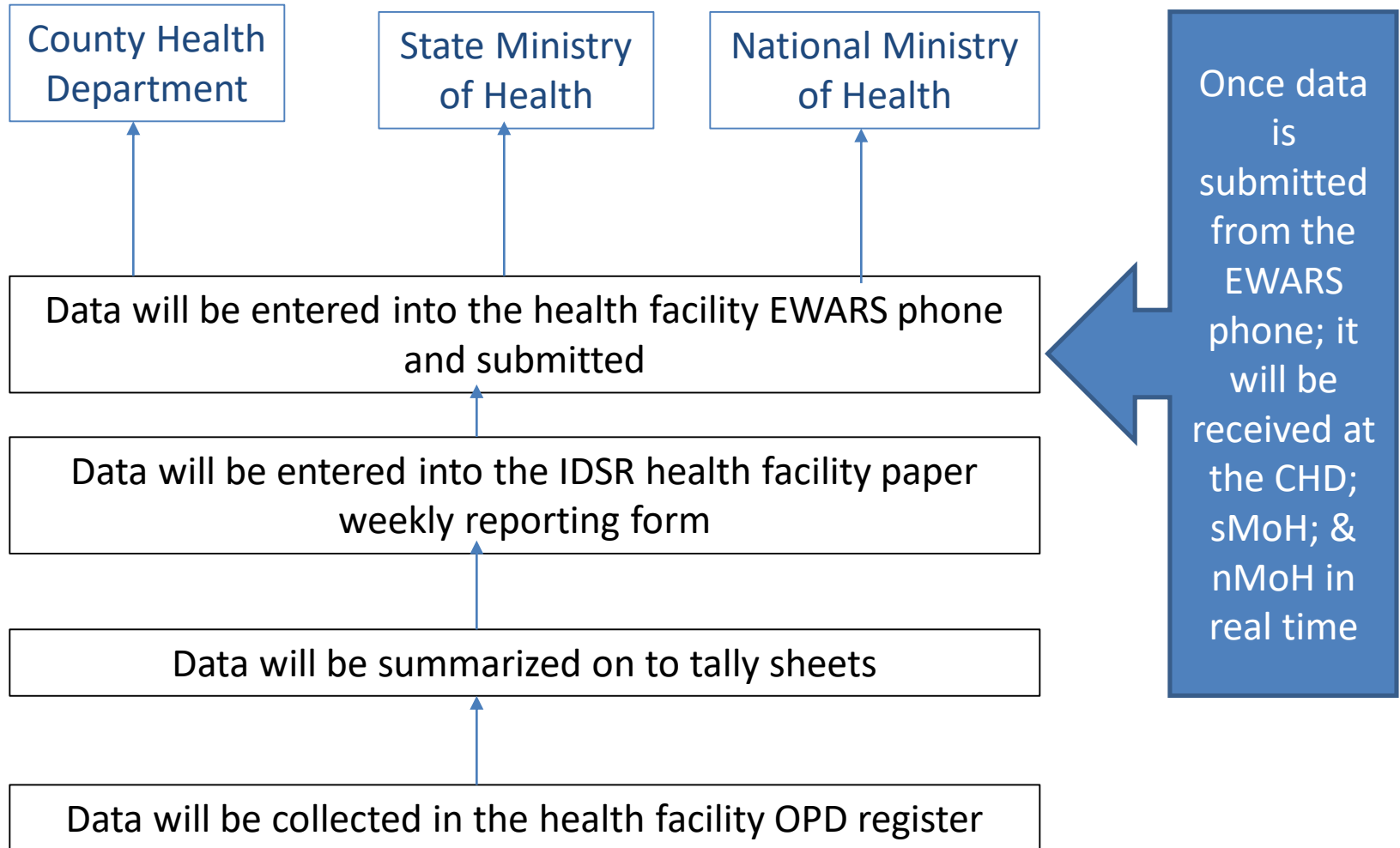


Does not require

- 24 hour electricity supply



Flow of IDSR data after mobile reporting is introduced at health facility level



Cholera Surveillance in the IDSR Context

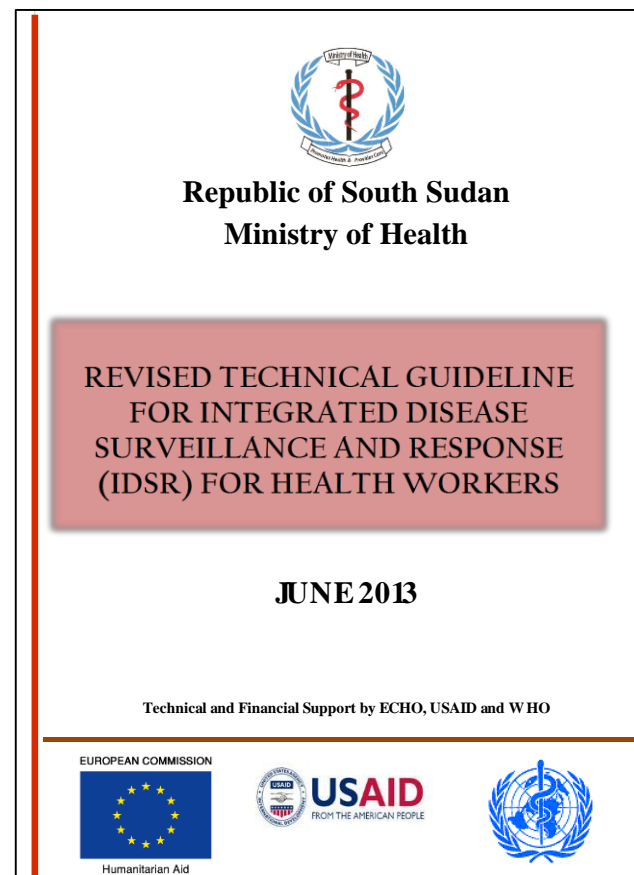
- Cholera is a priority disease for surveillance in South Sudan
- South Sudan IDSR Technical Guidelines describe the
 - Cholera case definition
 - Surveillance and response guidelines

Standard Case definition for cholera

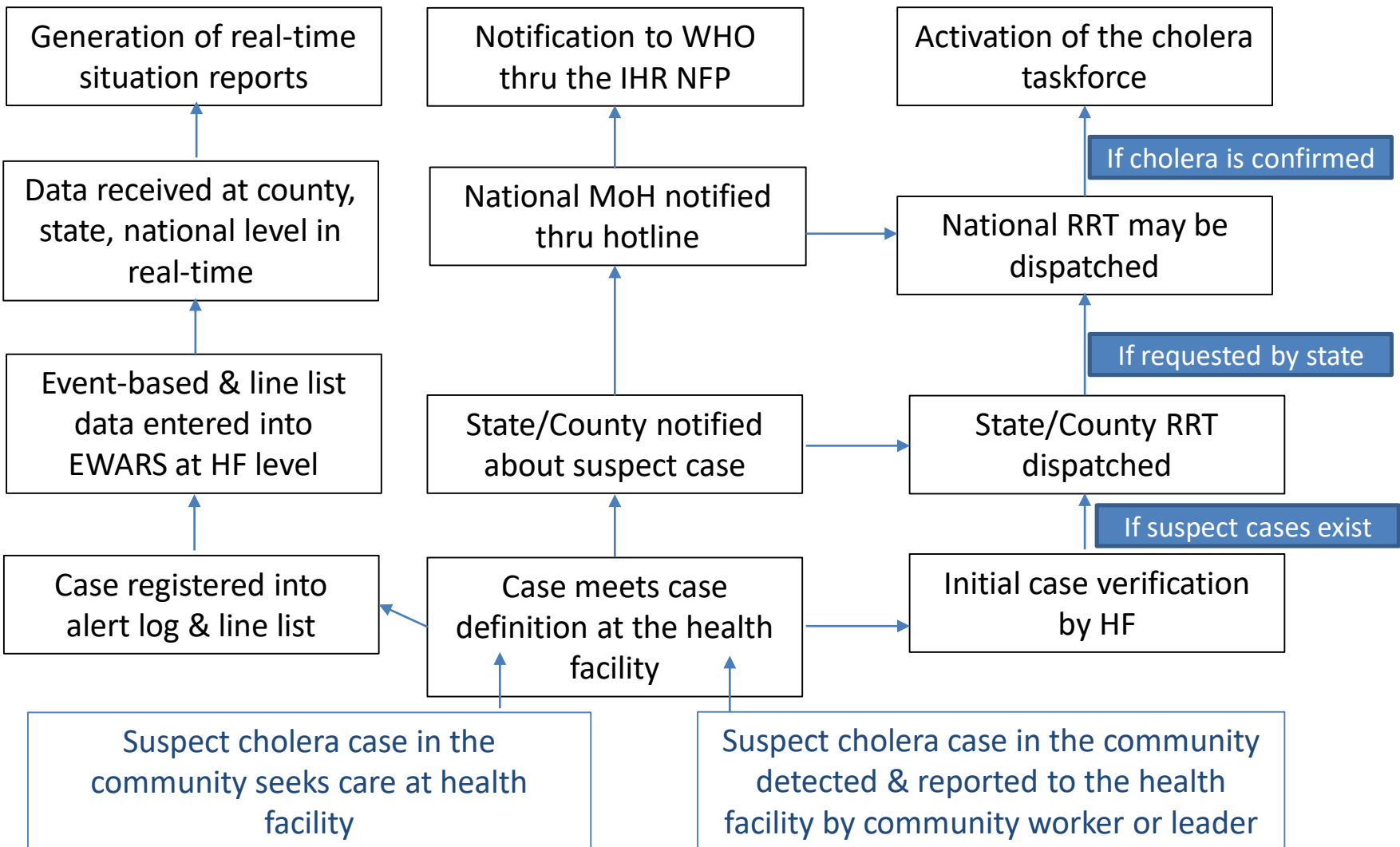
- In an area where the disease is not known to be present: a patient aged **5 years or more** develops **severe dehydration** or **dies** from acute watery diarrhoea
- In an area where there is a cholera epidemic: a patient aged **2 years or more** develops **acute watery diarrhoea with or without vomiting**

Community case definition for cholera

Anyone with **lots** of **watery stools**



Surveillance Procedure for Responding to a Suspect Cholera Case



EWARS Supports Cholera Line listing & Real-time Situation Updates

EWARS - Report Manager

ss.ewars.ws/reporting

EWARS 1452 0

Dashboard

Save Draft Submit

Cholera Line List

Location *

No Selection

Report Date

No date selected

1. Case identifying data

Case number

Name of case

Age

Name of village

Neighbourhood

as Wamala, Joseph Francis

Dashboard

Report Date	Location	Loca
2017-08-23	Lankien	South Sudan,
2017-08-08	Lankien	South Sudan,
2017-08-08	Lankien	South Sudan,
2017-08-08	Lankien	South Sudan,
2017-08-08	Lankien	South Sudan,
2017-08-02	Lankien	South Sudan,
2017-08-02	Lankien	South Sudan,
2017-08-25		South Sudan,
2017-08-25		South Sudan,
2017-08-25	northern Bari	South Sudan,
2017-08-25	northern Bari	South Sudan,
2017-08-	Kator	South Sudan,
2017-	Kator	South Sudan,
2017-	Rejaf	South Sudan,
2017-08-23	Kator	South Sudan,
2017-08-22	Kator	South Sudan,
2017-08-20	Rejaf	South Sudan,
2017-08-20	Munuki	South Sudan,
2017-08-20	Kator	South Sudan,
2017-08-19	Rejaf	South Sudan,
2017-08-19	Rejaf	South Sudan.

EWARS - Documents

ss.ewars.ws/documents

EWARS 1452

IDSR Bulletin

2015 2016 2017

South Sudan IDSR Bulletin - W34 2017 | 21 - 27 August

South Sudan IDSR Bulletin - W33 2017 | 14 - 20 August

South Sudan IDSR Bulletin - W32 2017 | 07 - 13 August

South Sudan IDSR Bulletin - W31 2017 | 31 - 06 August

South Sudan IDSR Bulletin - W30 2017 | 24 - 30 July

Cholera line listing platform

The web-based cholera line list

Automated real-time situation updates

[EWARS LINK](#)

EWARS dashboard

Thank you