



Nigeria Centre for Disease Control

Protecting the health of Nigerians

Nigeria Cholera Outbreak control teams

Nanpring Dawn Williams
Cholera Technical Working Group, Nigeria

04/15/2019

Modes of Operation

- Watch



- Routine monitoring of Cholera cases through IDSR.
- Primary Reporting – existing surveillance structure
- Information inform preliminary risk assessment

- Alert



- Enhanced surveillance – heightened situational awareness
- Notification of appropriate leadership, subject matter experts (SME), agencies and partners
- Formation and deployment of teams for initial assessment

- Response



- Activation of an Incident Management System/EOC
- Appointment of an Incident Management
- Mobilization and deployment of resources/RRT

Risk Assessment



Each incident must be assessed for the risk it presents. The overall risk is established by considering the following six aspects:

Geography/Environment

Spread

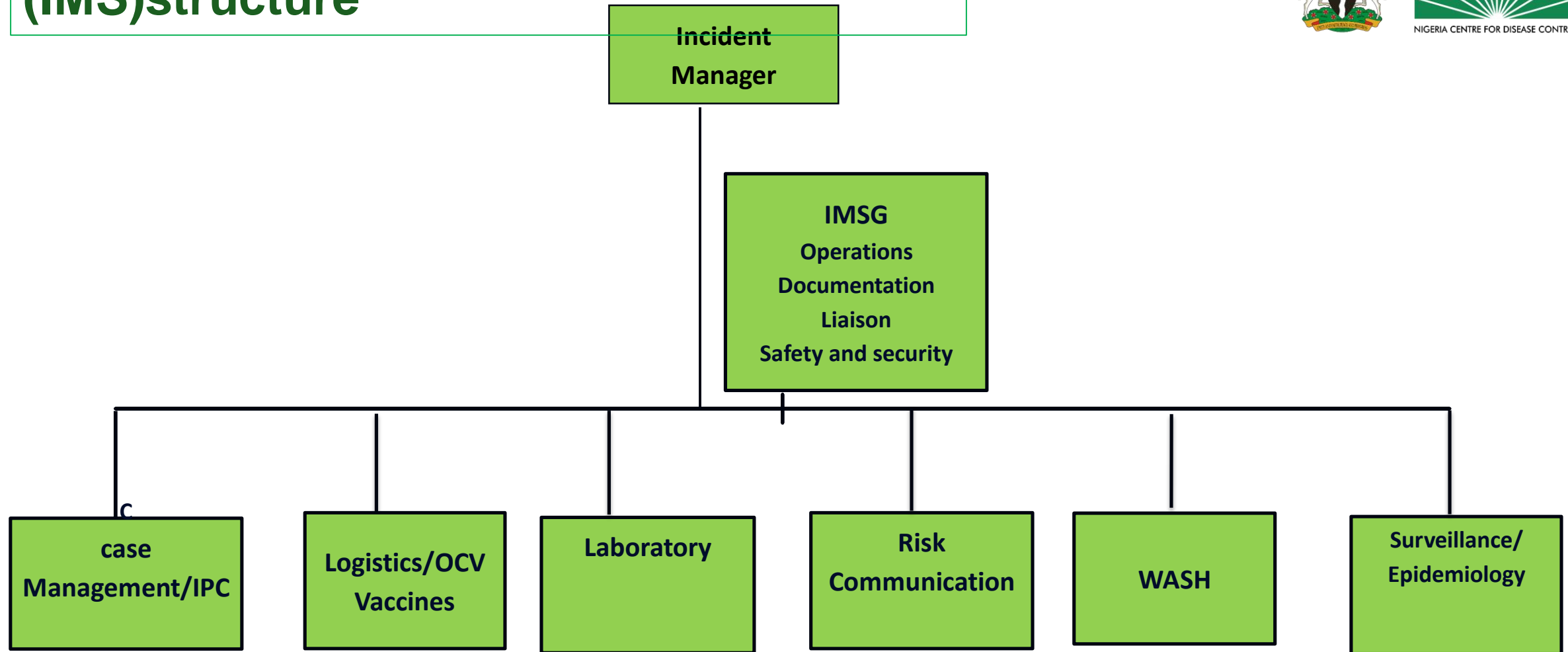
Severity

Capacity to cope

Political Interest/Media

International Significance

Cholera Incident Management System (IMS) structure





Rapid Response Team (RRT) composition

- RRT composition is Multi-disciplinary, Multi-agency and multi-sectoral
- RRT composition deployed to states is dependent on challenges of the reporting state.



How to support development/upgrading of response teams

- Through conducting simulation exercises to test the response systems existing within countries, identify gaps and strengthening the systems through addressing these gaps.

Thank you

**A healthier and safer Nigeria
through the prevention and control
of diseases of public health
importance**