



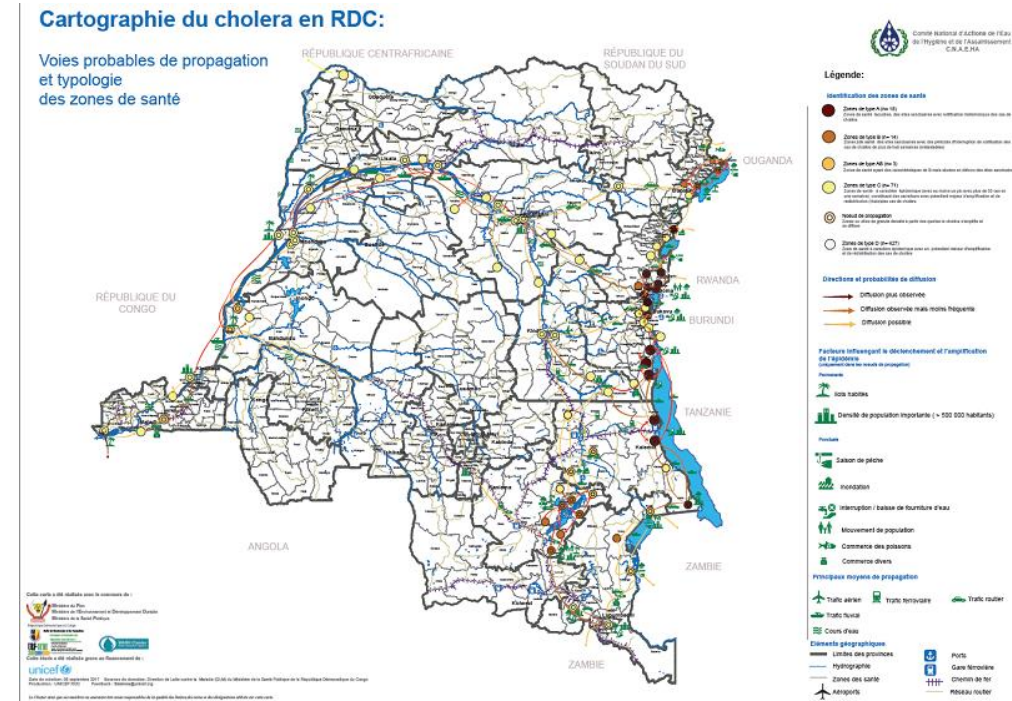
GLOBAL TASK FORCE ON  
**CHOLERA CONTROL**

# EPIDEMIOLOGY WORKING GROUP

GTCC Epi/Lab Working  
Group  
15–17 April 2019

# EPIDEMIOLOGY TO TARGET MULTI-SECTIONAL INTERVENTIONS

- Many countries are revising or developing NCPs
- A key element in the process is the epidemiological analysis in order to define priority areas to target interventions
  - Cholera hotspots have been identified by several countries
  - Different methodologies have been proposed and a review is required
- Monitoring the success of the roadmap will require the use of common indicators



# EARLY DETECTION AND RESPONSE TO OUTBREAKS

- Several national and supra-national epidemics still ongoing:
  - Yemen, Somalia, Kenya
  - Mozambique, Zimbabwe
  - Nigeria, Cameroon, Niger
  - Several areas in DRC
  - Haiti
- Delays are still observed in the identification and early description of outbreaks
  - RDTs, rapid molecular methods
- The understanding of the dynamics often does not happen on real-time
- We require better preparedness and response
  - Define areas prone to outbreaks, seasonal patterns
  - RRT